

**NEW MEXICO OIL CONSERVATION COMMISSION
WELL LOCATION AND ACREAGE DEDICATION PLAT**

Form C-102
Supersedes C-128
Effective 1-1-65

All distances must be from the outer boundaries of the Section.

Operator CAMPBELL & HEDRICK			Lease CHRISTMAS		Well No. 2
Unit Letter 0	Section 17	Township 22S	Range 37E	County Lea County, New Mexico	
Actual Footage Location of Well: 330 feet from the South line and 1980' feet from the East line					
Ground Level Elev: Not Known	Producing Formation Queens		Pool Langlie Mattix		Dedicated Acreage: 40 Acres

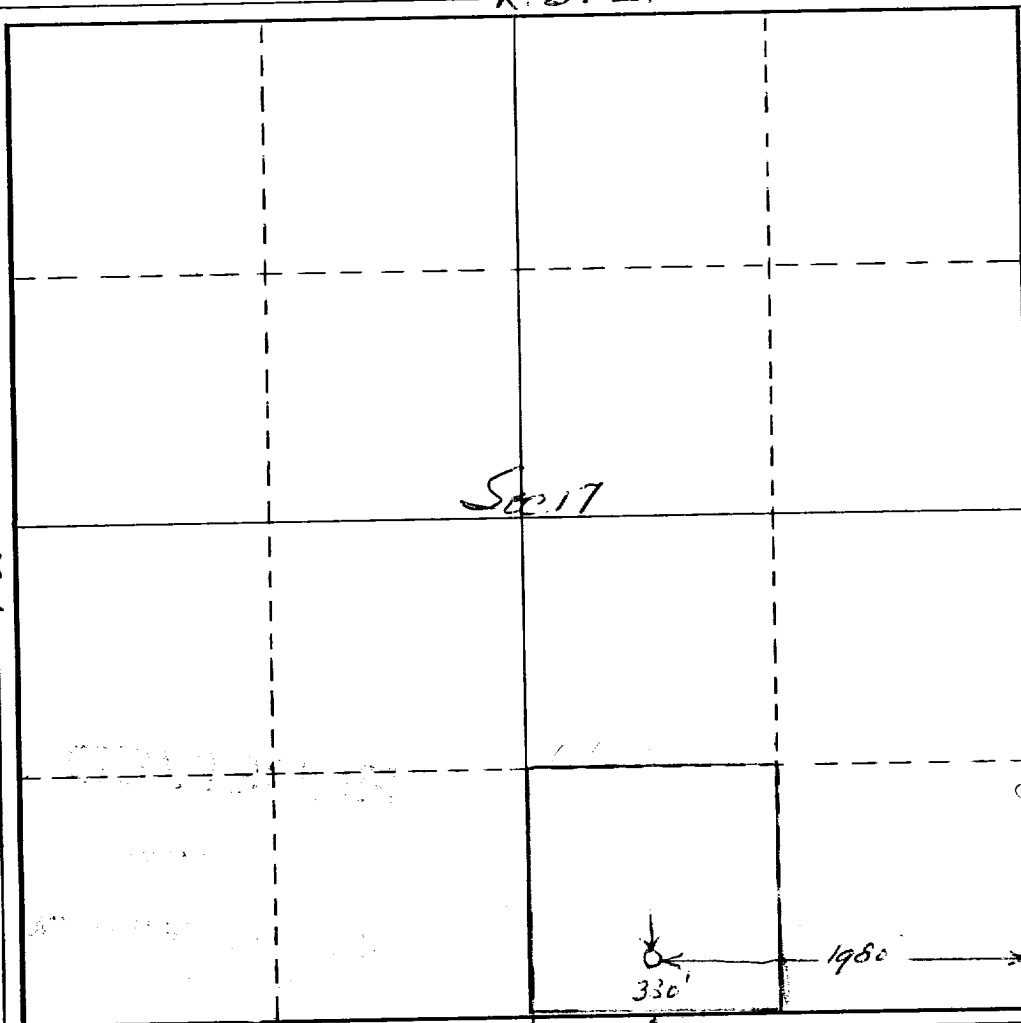
1. Outline the acreage dedicated to the subject well by colored pencil or hachure marks on the plat below.
2. If more than one lease is dedicated to the well, outline each and identify the ownership thereof (both as to working interest and royalty).
3. If more than one lease of different ownership is dedicated to the well, have the interests of all owners been consolidated by communitization, unitization, force-pooling, etc?

☐ Yes ☐ No If answer is "yes," type of consolidation _____

If answer is "no," list the owners and tract descriptions which have actually been consolidated. (Use reverse side of this form if necessary.) _____

No allowable will be assigned to the well until all interests have been consolidated (by communitization, unitization, forced-pooling, or otherwise) or until a non-standard unit, eliminating such interests, has been approved by the Commission.

R. 37E



CERTIFICATION

I hereby certify that the information contained herein is true and complete to the best of my knowledge and belief.

Name

Joe H. Campbell

Position

Petroleum Engineer

Company

Campbell & Hedrick

Date

9-28-71

I hereby certify that the well location shown on this plat was plotted from field notes of actual surveys made by me or under my supervision, and that the same is true and correct to the best of my knowledge and belief.

Date Surveyed

9-27-71

Registered Professional Engineer and/or Land Surveyor

(Petroleum Engineer)

(Okayed by J. D. Ramey)

Certificate No.

0 330 660 990 1320 1650 1980 2310 2640 2000 1500 1000 500 0

11/13

RECEIVED

OCT 7 1971

OIL CONSERVATION COMM.
HOBBS, N. M.