

NO. OF COPIES RECEIVED	
DISTRIBUTION	
SANTA FE	
FILE	
U.S.G.S.	
LAND OFFICE	
OPERATOR	

# NEW MEXICO OIL CONSERVATION COMMISSION

Form C-101  
Revised 1-1-65

5A. Indicate Type of Lease  
STATE ☐ FEE ☒

5. State Oil & Gas Lease No.

## APPLICATION FOR PERMIT TO DRILL, DEEPEN, OR PLUG BACK

1a. Type of Work		7. Unit Agreement Name	
b. Type of Well OIL WELL <input checked="" type="checkbox"/> GAS WELL <input type="checkbox"/> OTHER <input type="checkbox"/>		8. Farm or Lease Name COSSATOT "C"	
2. Name of Operator JOHN H. HENDRIX		9. Well No. 4	
3. Address of Operator 403 WALL TOWERS WEST MIDLAND, TEXAS 79701		10. Field and Pool, or Wildcat Granite Wash, Undeoir.	
4. Location of Well UNIT LETTER 0 LOCATED 660 FEET FROM THE South LINE AND 1980 FEET FROM THE East LINE OF SEC. 24 TWP. 22 South RGE. 37 East NMPM		12. County LEA	
19. Proposed Depth 7500		19A. Formation Granite Wash	
20. Rotary or C.T. Rotary		21. Elevations (Show whether DI, RT, etc.) 3310 GL	
21A. Kind & Status Plug. Bond Traverers #1472123		21B. Drilling Contractor Not selected	
22. Approx. Date Work will start December 20, 1972			

## PROPOSED CASING AND CEMENT PROGRAM

SIZE OF HOLE	SIZE OF CASING	WEIGHT PER FOOT	SETTING DEPTH	SACKS OF CEMENT	EST. TOP
11"	8 5/8"	24	1150	400	To circulate
7 7/8"	5 1/2"	15.5 & 17	7500	645	3600'

IN ABOVE SPACE DESCRIBE PROPOSED PROGRAM: IF PROPOSAL IS TO DEEPEN OR PLUG BACK, GIVE DATA ON PRESENT PRODUCTIVE ZONE AND PROPOSED NEW PRODUCTIVE ZONE. GIVE BLOWOUT PREVENTER PROGRAM, IF ANY.

I hereby certify that the information above is true and complete to the best of my knowledge and belief.

Signed Paula Jenditen Title Accountant Date 11-6-72

(This space for State Use)

APPROVED BY [Signature] TITLE SUPERVISOR DISTRICT I DATE NOV 15 1972

CONDITIONS OF APPROVAL, IF ANY:

RECEIVED

1 1972

OIL CONSERVATION COMM.  
WOSBS, N. M.

NEW MEXICO OIL CONSERVATION COMMISSION  
WELL LOCATION AND ACREAGE DEDICATION PLAT

Form C-102  
Supersedes C-128  
Effective 1-1-65

All distances must be from the outer boundaries of the Section

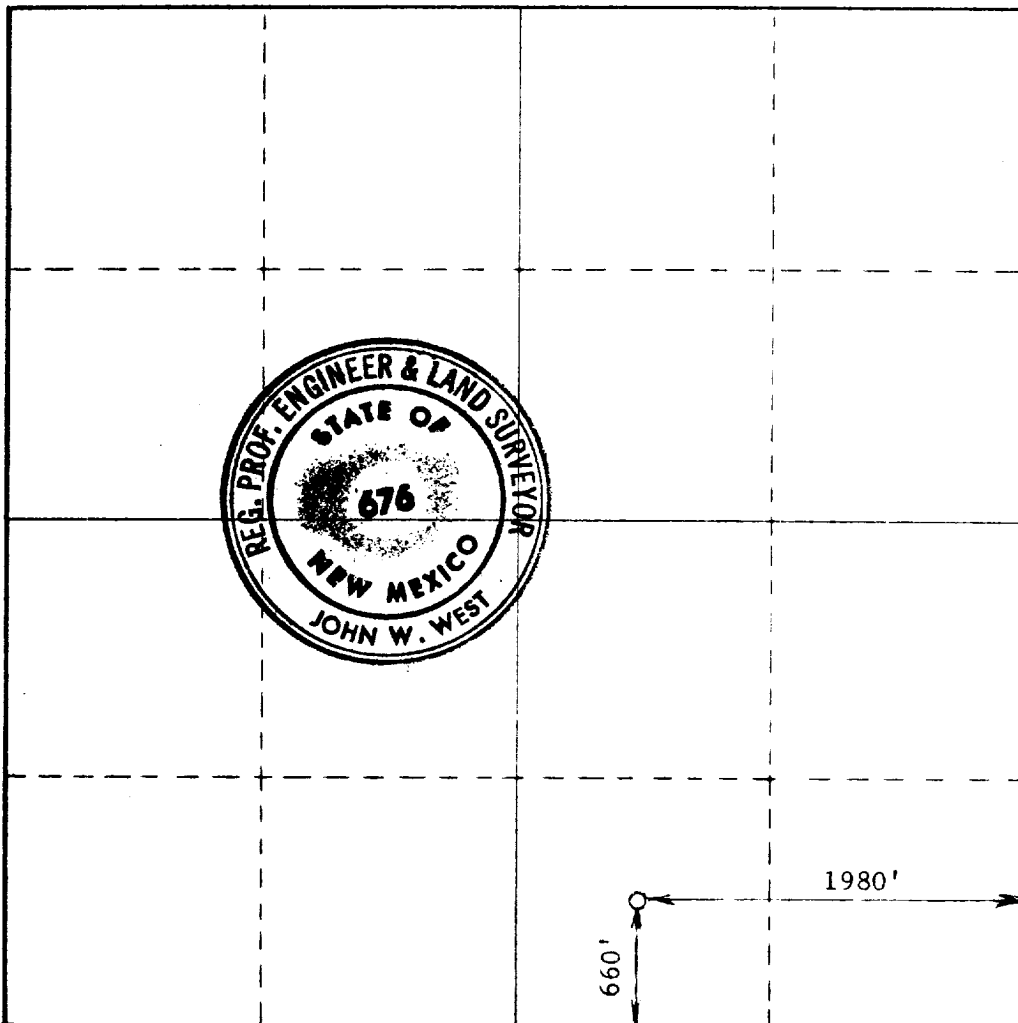
Operator <b>JOHN H. HENDRIX</b>			Lease <b>COSSATOT "C"</b>		Well No. <b>4</b>
Unit Letter <b>O</b>	Section <b>24</b>	Township <b>22 SOUTH</b>	Range <b>37 EAST</b>	County <b>LEA</b>	
Actual Footage Location of Well: <b>660</b> feet from the <b>SOUTH</b> line and <b>1980</b> feet from the <b>EAST</b> line					
Ground Level Elev. <b>3305.3</b>	Producing Formation <b>Granite Wash</b>		Pool <i>E. Brunson Plantash</i>	Dedicated Acreage <b>40</b> Acres	

1. Outline the acreage dedicated to the subject well by colored pencil or hatchure marks on the plat below.
2. If more than one lease is dedicated to the well, outline each and identify the ownership thereof (both as to working interest and royalty).
3. If more than one lease of different ownership is dedicated to the well, have the interests of all owners been consolidated by communitization, unitization, force-pooling, etc?

☐ Yes ☐ No If answer is "yes," type of consolidation \_\_\_\_\_

If answer is "no," list the owners and tract descriptions which have actually been consolidated (Use reverse side of this form if necessary.) \_\_\_\_\_

No allowable will be assigned to the well until all interests have been consolidated (by communitization, unitization, forced-pooling, or otherwise) or until a non-standard unit, eliminating such interests, has been approved by the Commission.



CERTIFICATION

I hereby certify that the information contained herein is true and complete to the best of my knowledge and belief.

Name *John H. Hendrix*  
Position

Owner-Operator

Company

John H. Hendrix

Date

November 14, 1972

I hereby certify that the well location shown on this plat was plotted from field notes of actual surveys made by me or under my supervision, and that the same is true and correct to the best of my knowledge and belief.

Date Surveyed

NOVEMBER 9, 1972

Registered Professional Engineer and/or Land Surveyor

Certificate No.

676

**ELF** RECEIVED

1 - 1972

OIL CONSERVATION COMM.  
HOBBS, N. M.