

**NEW MEXICO OIL CONSERVATION COMMISSION
WELL LOCATION AND ACREAGE DEDICATION PLAT**

Form C-102
Supersedes C-128
Effective 1-1-65

All distances must be from the outer boundaries of the Section.

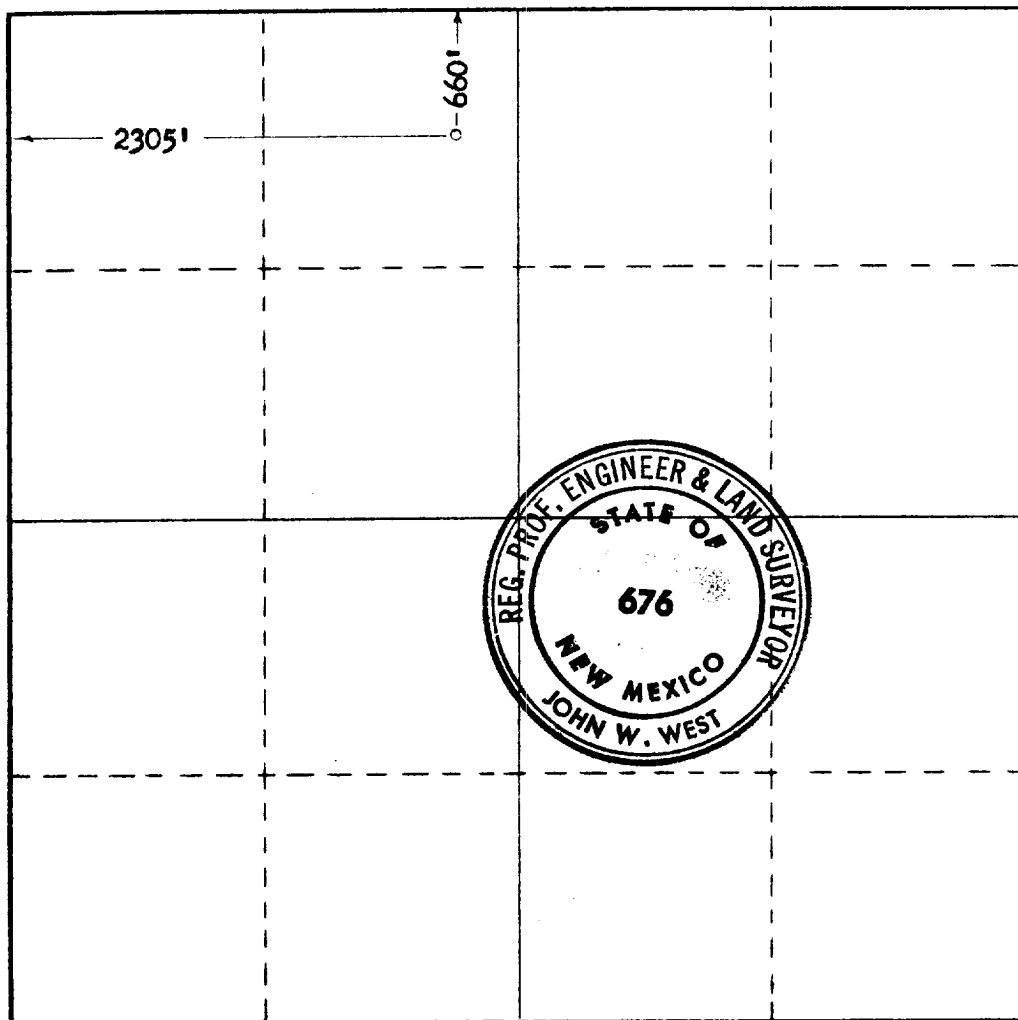
Operator AGUA, INC.			Lease Blinebry-Drinkard S. W. Disposal		Well No. C-2
Unit Letter C	Section 2	Township 22 South	Range 37 East	County Lea	
Actual Footage Location of Well: 2305 feet from the west line and 660 feet from the north line					
Ground Level Elev. 3358.6	Producing Formation Disposal San Andres		Pool Blinebry-Drinkard Area	Dedicated Acreage: Surface 2-1/2 acres	

1. Outline the acreage dedicated to the subject well by colored pencil or hatchure marks on the plat below.
2. If more than one lease is dedicated to the well, outline each and identify the ownership thereof (both as to working interest and royalty).
3. If more than one lease of different ownership is dedicated to the well, have the interests of all owners been consolidated by communitization, unitization, force-pooling, etc?

☒ Yes ☐ No If answer is "yes," type of consolidation **Salt Water Disposal Well**

If answer is "no," list the owners and tract descriptions which have actually been consolidated. (Use reverse side of this form if necessary.) _____

No allowable will be assigned to the well until all interests have been consolidated (by communitization, unitization, forced-pooling, or otherwise) or until a non-standard unit, eliminating such interests, has been approved by the Commission.



CERTIFICATION

I hereby certify that the information contained herein is true and complete to the best of my knowledge and belief.

W. G. Abbott

Name

W. G. Abbott

Position

Manager

Company

AGUA, INC.

Date

3/20/73

I hereby certify that the well location shown on this plat was plotted from field notes of actual surveys made by me or under my supervision, and that the same is true and correct to the best of my knowledge and belief.

Date Surveyed

Feb. 10, 1973

Registered Professional Engineer
and/or Land Surveyor

John W. West

Certificate No.

676



FI