

NO. OF COPIES RECEIVED	
DISTRIBUTION	
SANTA FE	
FILE	
U.S.G.S.	
LAND OFFICE	
OPERATOR	

NEW MEXICO OIL CONSERVATION COMMISSION

Form O-101

Revision 1-1-65

5A. Indicate Type of Lease

STATE **XX**

FEE ☐

5. State Oil & Gas Lease No.

L-3881

APPLICATION FOR PERMIT TO DRILL, DEEPEN, OR PLUG BACK

1a. Type of Work		7. Unit Agreement Name	
b. Type of Well OIL WELL <input type="checkbox"/> GAS WELL <input checked="" type="checkbox"/> OTHER <input type="checkbox"/>		8. Name of Lease Name State "35"	
2. Name of Operator Texas West Oil & Gas Corporation		9. Well No. 1	
3. Address of Operator 609 Midland National Bank Bldg, Midland, Texas 79701		10. Field or Locality Antelope Ridge	
4. Location of Well UNIT LETTER K LOCATED 1750 FEET FROM THE South LINE AND 1980 FEET FROM THE West LINE OF SEC. 35 TWP. 23S RGE. 34E NMPM		12. County Lea	
19. Proposed Depth 13,900'		19A. Formation Morrow	
20. Rotary or C.T. Rotary		21. Elevations (Show whether DE, RT, etc.) 3462 GR	
21A. Kind & Status Plug. Bond Blanket		21B. Drilling Contractor McVay Drilling Co.	
22. Approx. Date Work will start 9/10/73			

PROPOSED CASING AND CEMENT PROGRAM

SIZE OF HOLE	SIZE OF CASING	WEIGHT PER FOOT	SETTING DEPTH	SACKS OF CEMENT	EST. TOP
20"	16"	65#	360'	550	Circulated
12 1/4"	10 3/4"	40.5, 45.5, 51#	5200'	3500	Circulated
9 1/2"	7 5/8"	26.4, 29.7#	11,900'	2200	4000'
6 1/2"	5 1/2" Liner	20#	13,900'	300	

Adequate blowout equipment will be utilized to insure safe operations at all times.

APPROVAL VALID
FOR 90 DAYS UNLESS
DRILLING COMMENCED,

EXPIRES **12-7-73**

IN ABOVE SPACE DESCRIBE PROPOSED PROGRAM: IF PROPOSAL IS TO DEEPEN OR PLUG BACK, GIVE DATA ON PRESENT PRODUCTIVE ZONE AND PROPOSED NEW PRODUCTIVE ZONE. GIVE BLOWOUT PREVENTER PROGRAM, IF ANY.

I hereby certify that the information above is true and complete to the best of my knowledge and belief.

Signed **Roy H. Vella** Title **Operations Manager** Date **9/4/73**

(This space for State Use)

APPROVED BY

TITLE

SUPERVISOR DISTRICT I

DATE

CONDITIONS OF APPROVAL, IF ANY:

**NEW MEXICO OIL CONSERVATION COMMISSION
WELL LOCATION AND ACREAGE DEDICATION PLAT**

Form C-102
Supersedes C-101
Effective 1-1-73

All distances must be from the outer boundaries of the Section

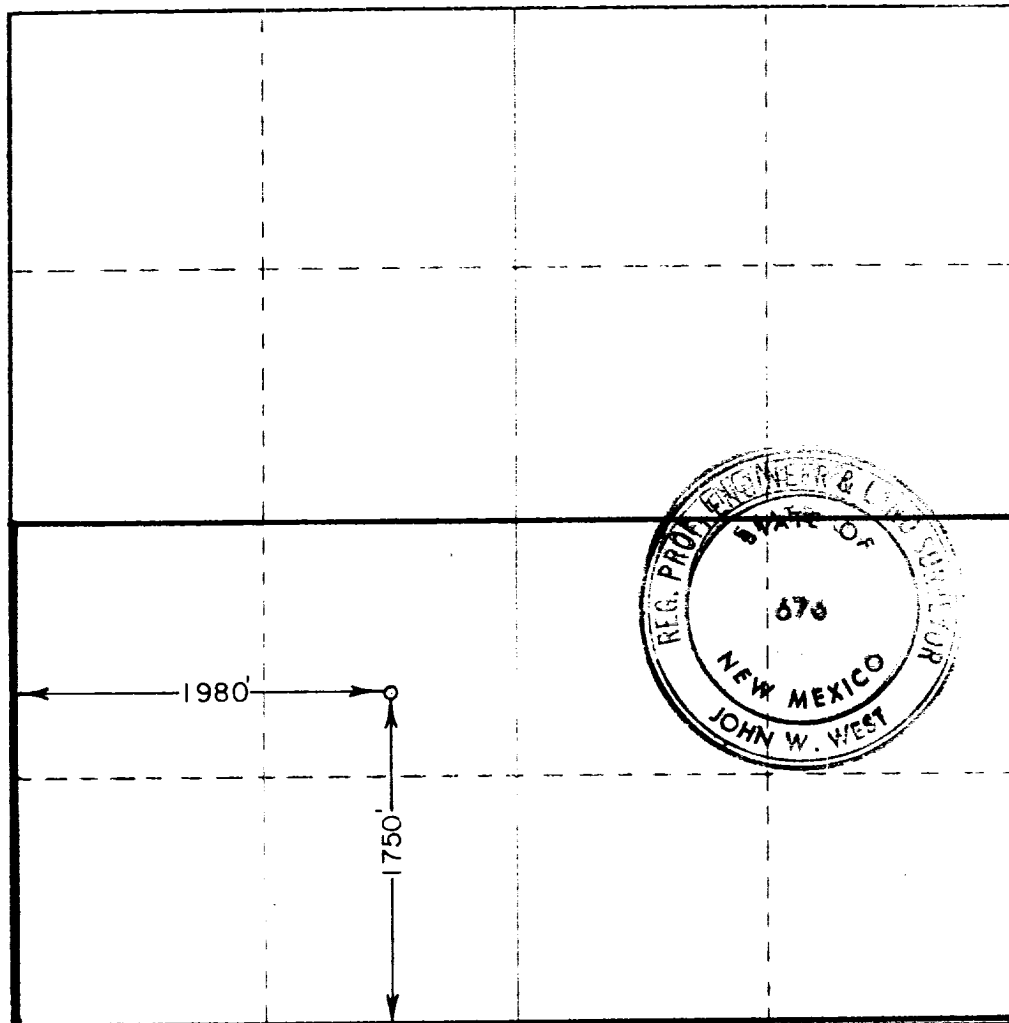
Operator Texas West Oil & Gas Corp.			Lease State 35		Well No. 1
Unit Letter K	Section 35	Township 23 South	Range 34 East	County Lea	
Actual Footage Location of Well: 1980 feet from the West line and 1750 feet from the South line					
Ground Level Elev. 3462.0	Producing Formation Atoka, Morrow		Pool Antelope Ridge		Dedicated Acreage 320 Acres

1. Outline the acreage dedicated to the subject well by colored pencil or hatchure marks on the plat below.
2. If more than one lease is dedicated to the well, outline each and identify the ownership thereof (both as to working interest and royalty).
3. If more than one lease of different ownership is dedicated to the well, have the interests of all owners been consolidated by communitization, unitization, force-pooling, etc?

☐ Yes ☐ No If answer is "yes," type of consolidation _____

If answer is "no," list the owners and tract descriptions which have actually been consolidated (Use reverse side of this form if necessary.) _____

No allowable will be assigned to the well until all interests have been consolidated (by communitization, unitization, forced-pooling, or otherwise) or until a non-standard unit, eliminating such interests, has been approved by the Commission.



CERTIFICATION

I hereby certify that the information contained herein is true and complete to the best of my knowledge and belief.

Roy K. Valla
Name **Roy K. Valla**

Position
Operations Manager

Company
Texas West Oil & Gas Corp.

Date
Sept. 4, 1973

I hereby certify that the well location shown on this plat was plotted from field notes of actual surveys made by me or under my supervision, and that the same is true and correct to the best of my knowledge and belief.

Date Surveyed

August 30, 1972

Registered Professional Engineer and Land Surveyor

John W. West
Certificate No. **676**

