

SOUTHEAST NEW MEXICO PACKER LEAKAGE TEST

Operator Sohio Natural Resources Company			Lease Hinton			Well No. 14		
Location of Well	Unit J	Sec 12	Twps 22s	Rge 37e	County Lea			
Name of Reservoir or Pool			Type of Prod (Oil or Gas)	Method of Prod Flow, Art Lift	Prod. Medium (Tbg or Csg)		Choke Size	
Upper Compl	Drinkard		Oil	Flow	Tbg		25/64	
Lower Compl	Granit Wash		Oil	Flow	Tbg		30/64	

FLOW TEST NO. 1

Both zones shut-in at (hour, date): 10:00 AM (6/1/81)

Well opened at (hour, date): 10:00 AM (6/2/81) Upper Completion Lower Completion

Indicate by (X) the zone producing..... _____ X

Pressure at beginning of test..... 680 760

Stabilized? (Yes or No)..... No No

Maximum pressure during test..... 760 760

Minimum pressure during test..... 680 10

Pressure at conclusion of test..... 760 10

Pressure change during test (Maximum minus Minimum)..... 80 750

Was pressure change an increase or a decrease?..... Increase Decrease

Well closed at (hour, date): 10:00 AM (6/3/81) Total Time On Production 24.0 hours

Oil Production Gas Production

During Test: 23.0 bbls; Grav. 40.0 ; During Test 100.0 MCF; GOR 4348

Remarks _____

FLOW TEST NO. 2

Well opened at (hour, date): 10:00 AM (6/4/81) Upper Completion Lower Completion

Indicate by (X) the zone producing..... X _____

Pressure at beginning of test..... 760 770

Stabilized? (Yes or No)..... No No

Maximum pressure during test..... 760 980

Minimum pressure during test..... 10 770

Pressure at conclusion of test..... 10 780

Pressure change during test (Maximum minus Minimum)..... 750 210

Was pressure change an increase or a decrease?..... Decrease Increase

Well closed at (hour, date) 11:00 AM (6-5-81) Total time on Production 25.0 hours

Oil Production Gas Production

During Test: 17.0 bbls; Grav. 42.0 ; During Test 147.0 MCF; GOR 8647

Remarks _____

I hereby certify that the information herein contained is true and complete to the best of my knowledge.

Approved JUN 16 1981 19
New Mexico Oil Conservation Commission

By _____
Title _____

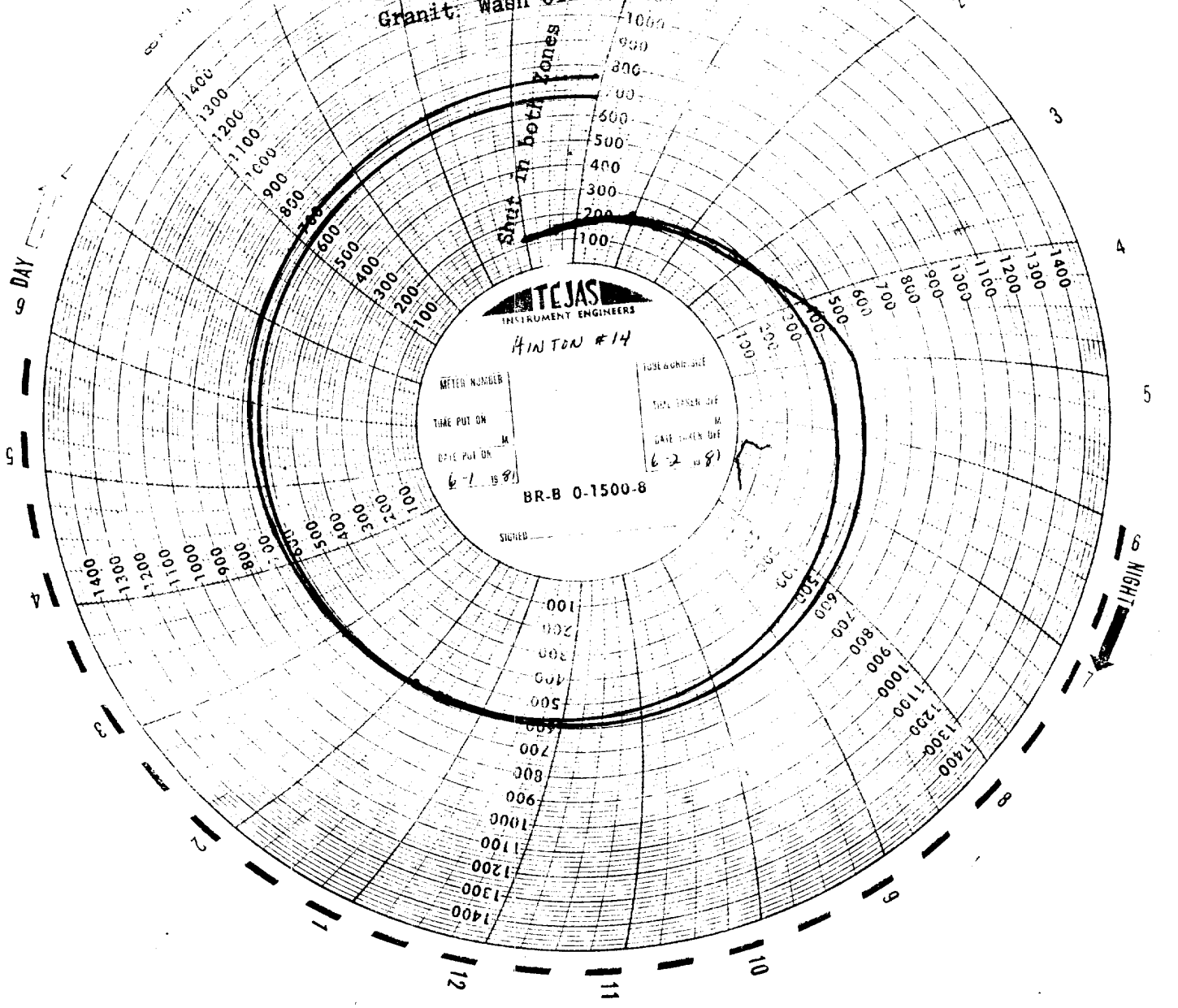
Operator Sohio Natural Resources Company

By Joe A. Coleman

Title Agent

Date June 8, 1981

Sohio Natural Resources Co.
Hinton, No. 14
Drinkard Oil (0-1500) Blue
Granit. Wash Oil (0-1500) Red



Shut in both zones

TEJAS
INSTRUMENT ENGINEERS

HINTON #14

PRINTED IN U.S.A.

Sohio Natural Resources Co. 12
Hinton, No. 14
Drinkard Oil (0-1500) Blue 400
Granite Wash Oil (0-1500) B&G

Open Granite Wash

DAY

2

3

4

5

5

4

3

2

1

12

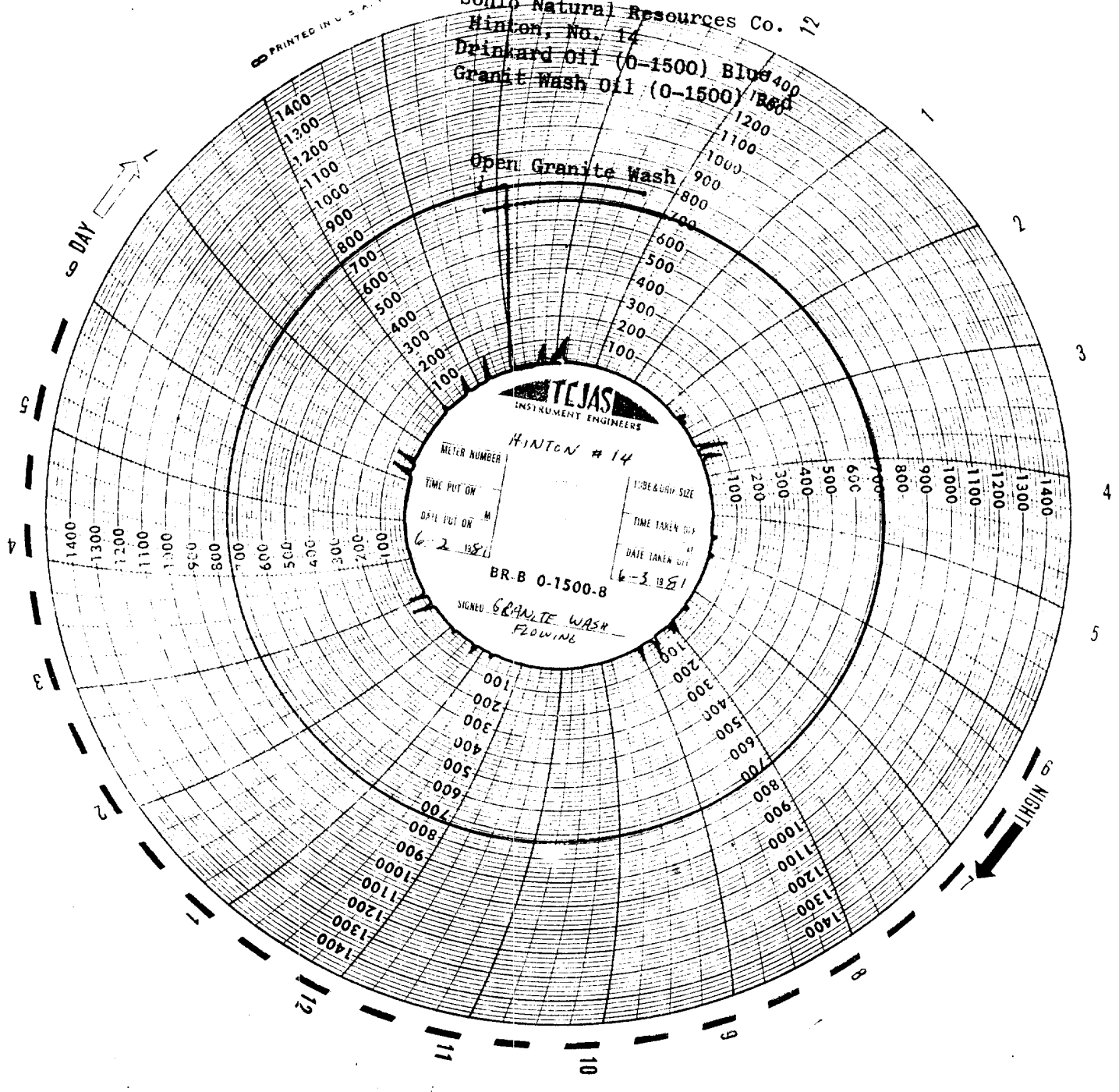
11

10

9

8

NIGHT



TEJAS
INSTRUMENT ENGINEERS

HINTON # 14

METER NUMBER

TIME PUT ON

DATE PUT ON

6-2-1951

PIPE & GUY SIZE

TIME TAKEN

DATE TAKEN

6-3-1951

BR-B 0-1500-8

SIGNED GRANITE WASH
FLOWING

© 1951

Sphlo Natural Resources Co.

Hinton, No. 14

Drinkard Oil (0-1500) Blue

Granit Wash Oil (0-1500) Red

DAY

12

Granit Wash Oil



HINTON #14

METER NUMBER

TIME PUT ON

DATE PUT ON

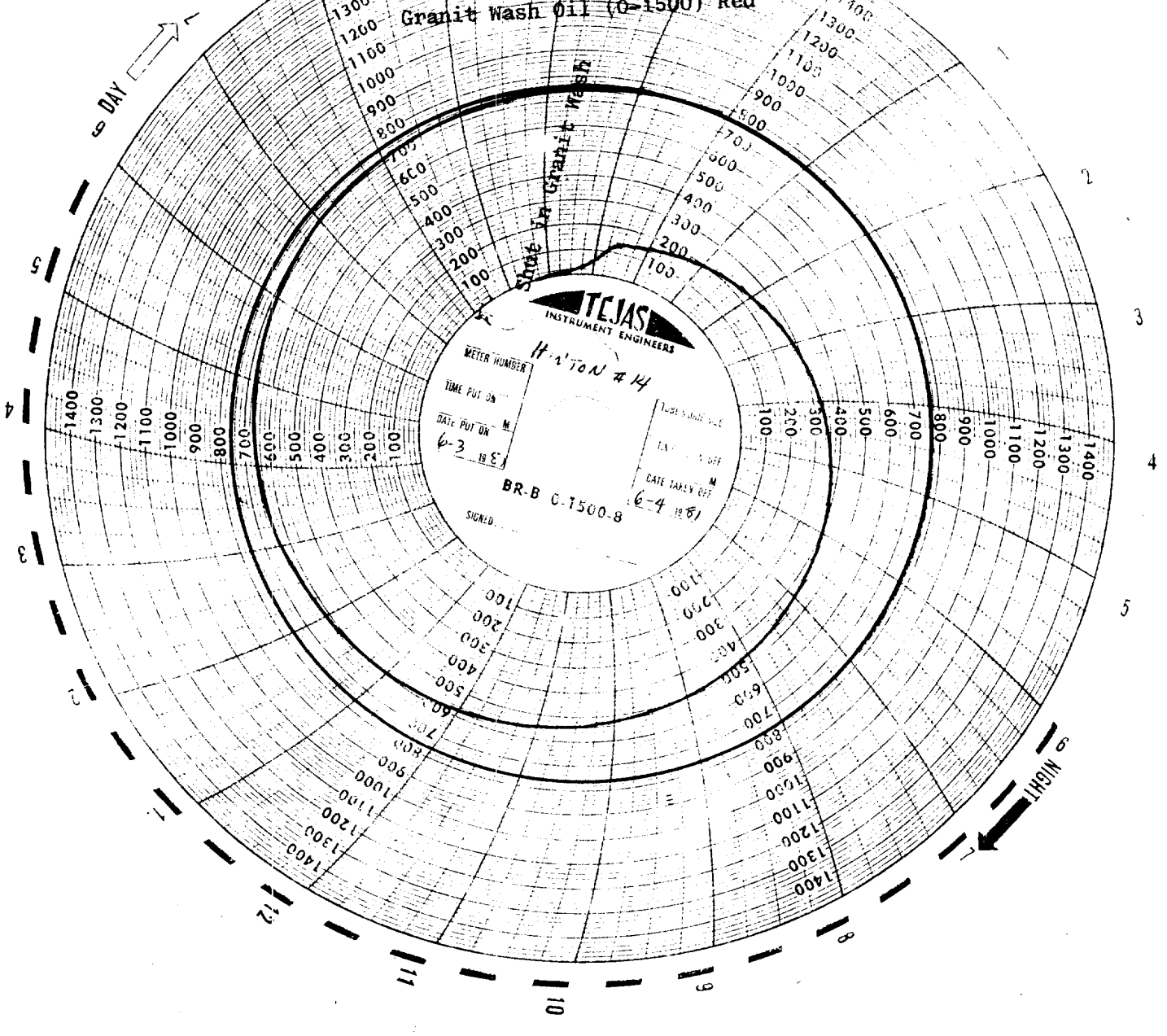
6-3 1951

DATE TAKEN OFF

6-4 1951

BR-B C-1500-8

SIGNED



NIGHT

10

9

8

11

12

Sohio Natural Resources Co.

1400 Hinton, No. 14
1300 Drinkard Oil (0-1500) Blue
1200 Granit Wash Oil (0-1500) Red

DAY

12

Opened Drinkard

Finished Test

TEJAS
INSTRUMENT ENGINEERS

HINTON #14

SHEET NUMBER	TESTER'S NAME
TIME PUT ON	TIME TAKEN OFF
DATE PUT ON	DATE TAKEN OFF
6-4 1951	6-5 1951

BR-B 0-1500-B

SIGNED DRINKARD FLOWING

1400
1300
1200
1100
1000
900
800
700
600
500
400
300
200
100

1400
1300
1200
1100
1000
900
800
700
600
500
400
300
200
100

1400
1300
1200
1100
1000
900
800
700
600
500
400
300
200
100

1400
1300
1200
1100
1000
900
800
700
600
500
400
300
200
100

1400
1300
1200
1100
1000
900
800
700
600
500
400
300
200
100

1400
1300
1200
1100
1000
900
800
700
600
500
400
300
200
100

1400
1300
1200
1100
1000
900
800
700
600
500
400
300
200
100

1400
1300
1200
1100
1000
900
800
700
600
500
400
300
200
100

1400
1300
1200
1100
1000
900
800
700
600
500
400
300
200
100

1400
1300
1200
1100
1000
900
800
700
600
500
400
300
200
100

1400
1300
1200
1100
1000
900
800
700
600
500
400
300
200
100

1400
1300
1200
1100
1000
900
800
700
600
500
400
300
200
100

1400
1300
1200
1100
1000
900
800
700
600
500
400
300
200
100

1400
1300
1200
1100
1000
900
800
700
600
500
400
300
200
100

1400
1300
1200
1100
1000
900
800
700
600
500
400
300
200
100

1400
1300
1200
1100
1000
900
800
700
600
500
400
300
200
100

1400
1300
1200
1100
1000
900
800
700
600
500
400
300
200
100

1400
1300
1200
1100
1000
900
800
700
600
500
400
300
200
100

NIGHT

2

3

4

5

6

7

8

9

10

11

12