

| | |
|------------------------|--|
| NO. OF COPIES RECEIVED | |
| DISTRIBUTION | |
| SANTA FE | |
| FILE | |
| U.S.G.S. | |
| LAND OFFICE | |
| OPERATOR | |

NEW MEXICO OIL CONSERVATION COMMISSION

Form C-101
Revised 1-1-65 *38 025 11/71*

| | |
|--------------------------------|---|
| 5A. Indicate Type of Lease | |
| STATE <input type="checkbox"/> | FEE <input checked="" type="checkbox"/> |

5. State Oil & Gas Lease No.

APPLICATION FOR PERMIT TO DRILL, DEEPEN, OR PLUG BACK

| | | | |
|--|-------------------------------|--------------------------------|----------------------------------|
| 1a. Type of Work | | 7. Unit Agreement Name | |
| b. Type of Well DRILL <input checked="" type="checkbox"/> DEEPEN <input type="checkbox"/> PLUG BACK <input type="checkbox"/> OIL WELL <input checked="" type="checkbox"/> GAS WELL <input type="checkbox"/> OTHER <input type="checkbox"/> SINGLE ZONE <input type="checkbox"/> MULTIPLE ZONE <input type="checkbox"/> | | South Penrose Skelly Unit | |
| 2. Name of Operator | | 8. Farm or Lease Name | |
| Gulf Oil Corporation | | Penrose Skelly | |
| 3. Address of Operator | | 9. Well No. | |
| Box 670, Hobbs, New Mexico 88240 | | 220 | |
| 4. Location of Well | | 10. Field and Pool, or Without | |
| UNIT LETTER <u>N</u> LOCATED <u>1034</u> FEET FROM THE <u>South</u> LINE | | Penrose Skelly | |
| AND <u>2635'</u> FEET FROM THE <u>West</u> LINE OF SEC. <u>5</u> TWP. <u>22-S</u> RGE. <u>37-E</u> NMPM | | 12. County | |
| | | Lea | |
| 19. Proposed Depth | | 19A. Formation | 20. Rotary or C.C. |
| 3900' | | Grayburg | Rotary |
| 21. Elevations (Show whether DF, RT, etc.) | 21A. Kind & Status Plug. Bond | 21B. Drilling Contractor | 22. Approx. Date Work will start |
| | Blanket | | |

PROPOSED CASING AND CEMENT PROGRAM

| SIZE OF HOLE | SIZE OF CASING | WEIGHT PER FOOT | SETTING DEPTH | SACKS OF CEMENT | EST. TOP |
|--------------|----------------|-----------------|---------------|-----------------|----------|
| 11" | 8-5/8" | 24# | 1200' | Circulate | |
| 7-7/8" | 5-1/2" | 14# | 3900' | 300 sacks | |

BOP: See attached Drawing No. 2

APPROVAL VALID
FOR 90 DAYS UNLESS
DRILLING COMMENCED,

EXPIRES 6-30-75

N 4957 N 1/2

IN ABOVE SPACE DESCRIBE PROPOSED PROGRAM; IF PROPOSAL IS TO DEEPEN OR PLUG BACK, GIVE DATA ON PRESENT PRODUCTIVE ZONE AND PROPOSED NEW PRODUCTIVE ZONE, GIVE BLOWOUT PREVENTER PROGRAM, IF ANY.

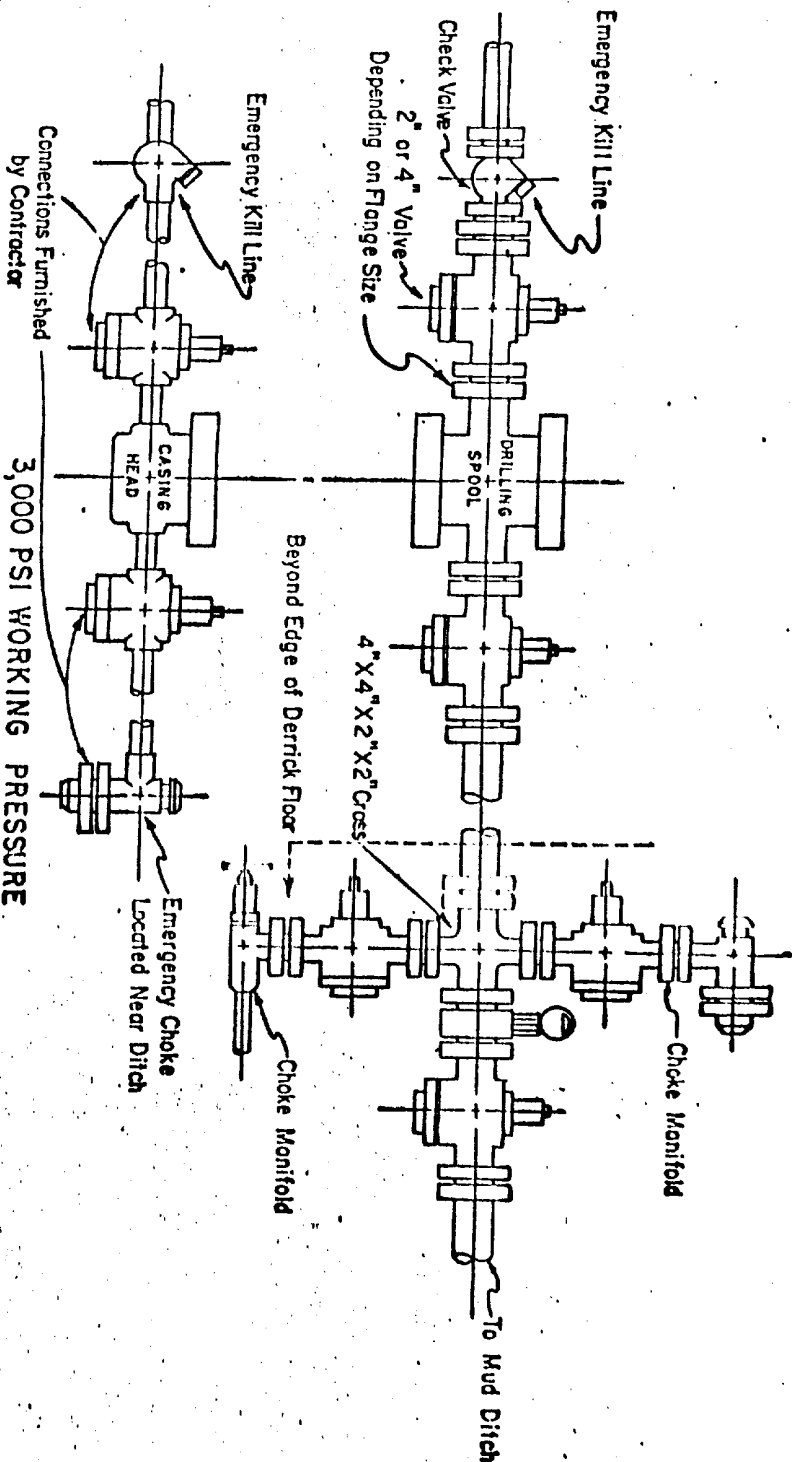
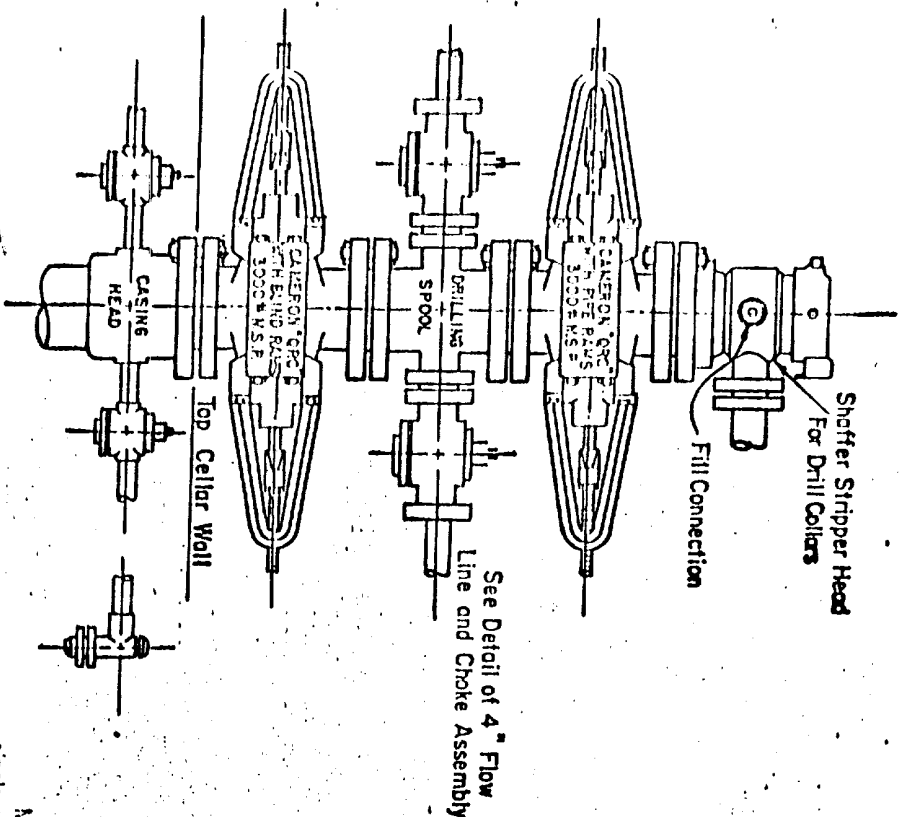
I hereby certify that the information above is true and complete to the best of my knowledge and belief.

Signed *W. B. Borkland* Title Area Production Manager Date February 21, 1975

(This space for State Use)

APPROVED BY *John J. Ramsey* TITLE SUPERVISOR OF DISTRICT I DATE MAR 11 1975

CONDITIONS OF APPROVAL, IF ANY:



3,000 PSI WORKING PRESSURE
 KILL, CHOKE, AND FILL CONNECTIONS
 API Series 900 Flanges or Better
 DETAIL OF 4" FLOW LINE CHOKE ASSEMBLY

3,000 PSI WORKING PRESSURE BLOWOUT PREVENTER HOOK-UP

Series 900 Flanges, or Better

Minimum assembly for 3000 PSI working pressure will consist of two preventers which may be Cameron Space-Saver, Cameron Type F, single or double, Cameron Space-Saver or Shafter Hydraulic, single or double. If double preventers are provided, the drilling spool shall be placed below the preventers and the blind rams placed in the upper preventer. With this arrangement it will not be necessary to provide a kill and choke line to Gulf's casinghead housing. In lieu of the drilling spool, the flanged outlets of the double Shafter, the Space-Saver or double F, if they are the correct size, and provided the preventers can be installed to meet Gulf's requirements, may be used for the four-inch flow line and the two-inch kill line.

Size 12-inch preventers may be used for work down through 8-5/8-inch casing. Size 10-inch preventers may be used for work down through 7-5/8-inch casing. Size six-inch preventers are to be used for work through 7-inch and 5-1/2-inch casings.

Minimum operating equipment for the preventers will be: (1) An air operated pump and (2) An accumulator (s) with some means of obtaining a fluid charge. A closed fluid system is recommended. The closing manifold and remote closing manifold will have a separate four-way valve for each pressure operated device. Sufficient fluid capacity in the accumulator (s) shall be available to close all the pressure operated devices at the same time with 25 per cent reserve. Gulf No. 551 hydraulic oil shall be used as the operating fluid.

The four-inch flow line from the preventers shall be supported by a metal stand or reinforced concrete. All valves throughout the assembly shall be selected for operation in both gas and fluids. Sufficient substructure height is to be provided in the event Gulf should request installation of a rotating type blowout preventer. The preventers will be provided with stem extensions, universal joints, if needed, and operating wheels.

NEW MEXICO OIL CONSERVATION COMMISSION
WELL LOCATION AND ACREAGE DEDICATION PLAT

Form
Supersedes Form
1-1-73

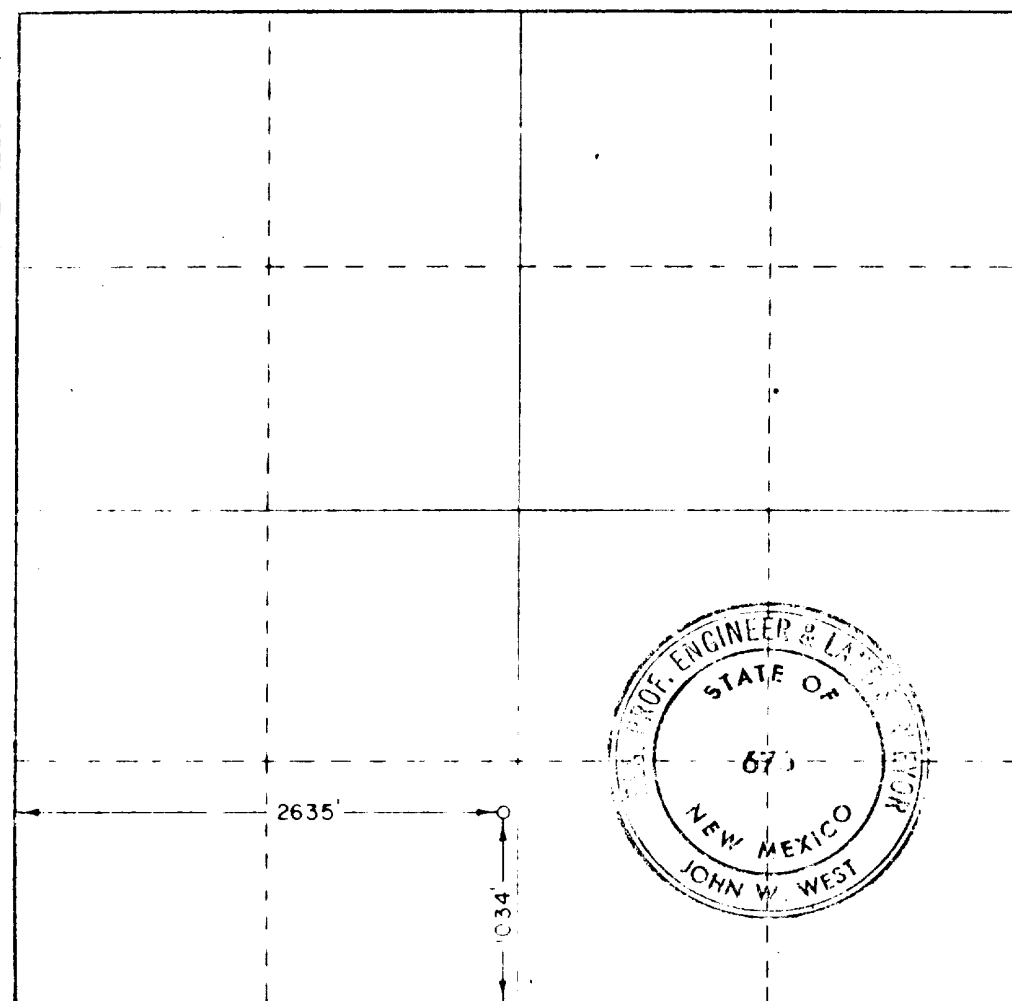
All distances must be from the outer boundaries of the Section

| | | | | | | | | |
|------------------|---------------|----------------|---------------------------|------|---------------|------|--|--|
| Gulf Oil Company | | | South Penrose Skelly Unit | | | 220 | | |
| N | 5 | 22 South | 37 East | Lea | | | | |
| 1034 | feet from the | South | line and | 2635 | feet from the | West | | |
| Grayburg | | Penrose Skelly | | 40 | | | | |

- Outline the acreage dedicated to the subject well by colored pencil or hatchure marks on the plat below.
- If more than one lease is dedicated to the well, outline each and identify the ownership thereof (both as to working interest and royalty).
- If more than one lease of different ownership is dedicated to the well, have the interests of all owners been consolidated by communitization, unitization, force-pooling, etc?
☒ Yes ☐ No If answer is "yes," type of consolidation _____

If answer is "no," list the owners and tract descriptions which have actually been consolidated (Use reverse side of this form if necessary.) _____

No allowable will be assigned to the well until all interests have been consolidated (by communitization, unitization, forced-pooling, or otherwise) or until a non-standard unit, eliminating such interests, has been approved by the Commission.



CERTIFICATION

I hereby certify that the information contained herein is true and complete to the best of my knowledge and belief

C. D. Borland

C. D. BORLAND

Area Production Manager

Gulf Oil Corporation

February 21, 1975

I hereby certify that the well location shown on this plat was plotted from field notes of actual surveys made by me or under my supervision, and that the same is true and correct to the best of my knowledge and belief

Date of survey

February 10, 1975

Signature of Surveyor

John W. West

676

RECEIVED
JAN 10 1964

RECEIVED
JAN 10 1964
FBI - NEW YORK

173