

**NEW MEXICO OIL CONSERVATION COMMISSION
WELL LOCATION AND ACREAGE DEDICATION PLAT**

Form O-122
Supersedes O-128
Effective 1-1-65

All distances must be from the outer boundaries of the Section

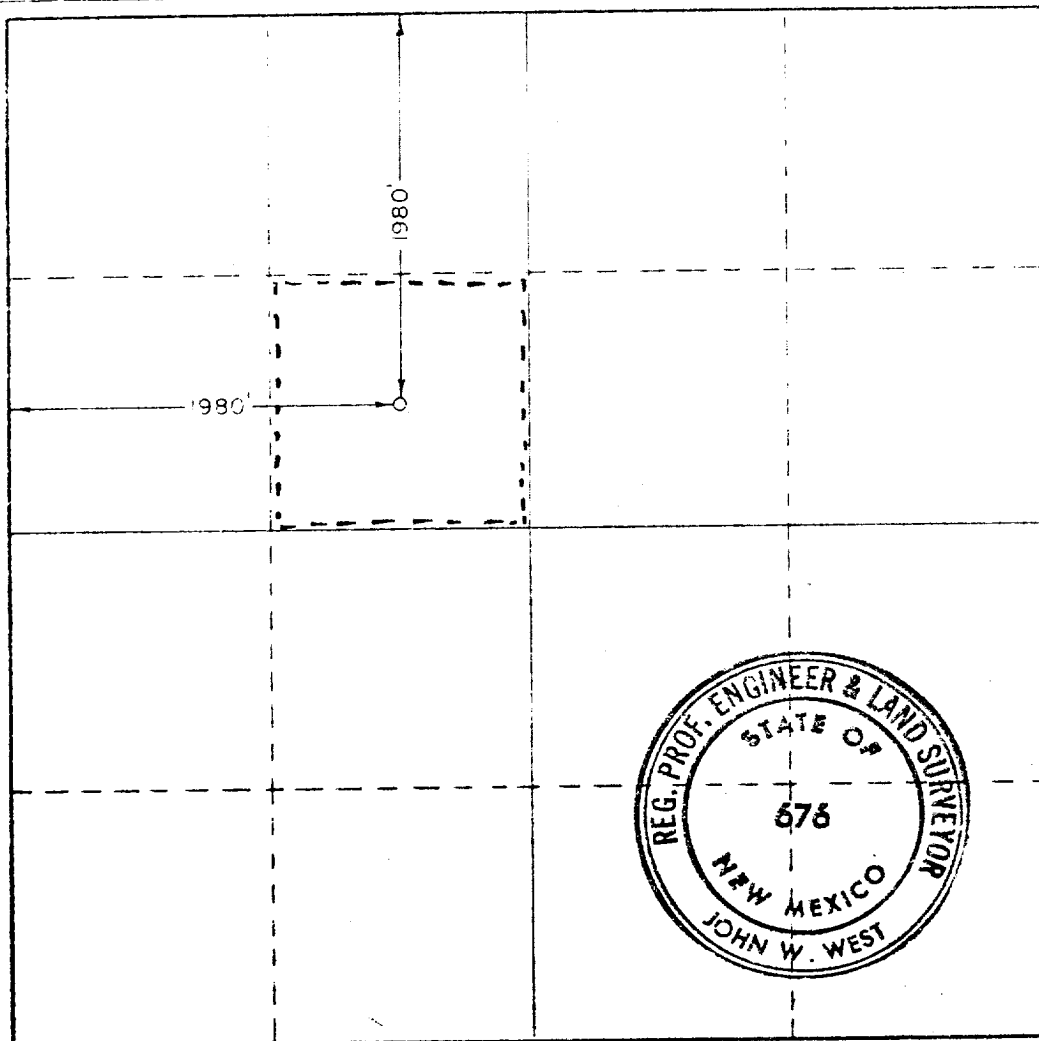
Operator Continental Oil Company			Lease Marshall		Well No. 5
Section F	Section 19	Township 23 South	Range 33 East	County Lea	
Actual Well Location of Well:					
1980	feet from the	North	line and	1980	feet from the West line
Ground Level Elev. 3697.5	Producing Formation DELAWARE		Pool CRUZ DELANARE		Dedicated Acreage 40

1. Outline the acreage dedicated to the subject well by colored pencil or hatchure marks on the plat below.
2. If more than one lease is dedicated to the well, outline each and identify the ownership thereof (both as to working interest and royalty).
3. If more than one lease of different ownership is dedicated to the well, have the interests of all owners been consolidated by communitization, unitization, force-pooling, etc?

☐ Yes ☐ No If answer is "yes," type of consolidation _____

If answer is "no," list the owners and tract descriptions which have actually been consolidated. (Use reverse side of this form if necessary.) _____

No allowable will be assigned to the well until all interests have been consolidated (by communitization, unitization, forced-pooling, or otherwise) or until a non-standard unit, eliminating such interests, has been approved by the Commission.



CERTIFICATION

I hereby certify that the information contained herein is true and complete to the best of my knowledge and belief.

[Signature]

SR. ANALYST

CONTINENTAL OIL CO.

Date
3-14-75

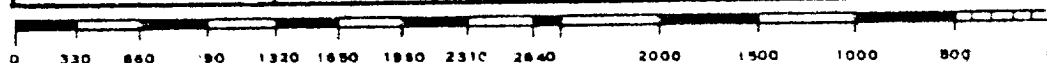
I hereby certify that the well location shown on this plat was plotted from field notes of actual surveys made by me or under my supervision, and that the same is true and correct to the best of my knowledge and belief.

Date Surveyed
December 20, 1974

Registered Professional Engineer and/or Land Surveyor

[Signature]

Certificate No. **676**



RECEIVED

APR 1 1976

OIL CONSERVATION COMM.
LOBBY, H. M.