

NO. OF COPIES RECEIVED	
DISTRIBUTION	
SANTA FE	
FILE	
U.S.G.S.	
LAND OFFICE	
OPERATOR	

# NEW MEXICO OIL CONSERVATION COMMISSION

Form C-101  
Revised 1-1-65

5A. Indicate Type of Lease	
STATE <input type="checkbox"/>	FEE <input checked="" type="checkbox"/>
5. State Oil & Gas Lease No.	

## APPLICATION FOR PERMIT TO DRILL, DEEPEN, OR PLUG BACK

1a. Type of Work		7. Unit Agreement Name	
b. Type of Well OIL WELL <input checked="" type="checkbox"/> GAS WELL <input type="checkbox"/> OTHER <input type="checkbox"/>		8. Farm or Lease Name H. T. Mattern (NCT-D)	
2. Name of Operator Gulf Oil Corporation		9. Well No. 13	
3. Address of Operator Box 670, Hobbs, New Mexico 88240		10. Field and Pool, or Without Drinkard	
4. Location of Well UNIT LETTER <u>N</u> LOCATED <u>810</u> FEET FROM THE <u>South</u> LINE AND <u>1930</u> FEET FROM THE <u>West</u> LINE OF SEC. <u>6</u> TWP. <u>22-S</u> RGE. <u>37-E</u> NMPM		12. County Lea	
19. Proposed Depth 6800'		19A. Formation Drinkard	
20. Rotary or C.T. Rotary		21. Elevations (Show whether DF, RT, etc.) 3457' GL	
21A. Kind & Status Plug. Bond Blanket		21B. Drilling Contractor	
22. Approx. Date Work will start June 20, 1975			

## PROPOSED CASING AND CEMENT PROGRAM

SIZE OF HOLE	SIZE OF CASING	WEIGHT PER FOOT	SETTING DEPTH	SACKS OF CEMENT	EST. TOP
11"	8-5/8"	24#	1150'	Circulate	
7-7/8"	5-1/2"	15.50#	6800'	Base of Salt	

BOP: See Drawing No. 3 attached.

APPROVAL VALID  
FOR 90 DAYS UNLESS  
DRILLING COMMENCED  
EXPIRES Sept. 11/1975

IN ABOVE SPACE DESCRIBE PROPOSED PROGRAM: IF PROPOSAL IS TO DEEPEN OR PLUG BACK, GIVE DATA ON PRESENT PRODUCTIVE ZONE AND PROPOSED NEW PRODUCTIVE ZONE. GIVE BLOWOUT PREVENTER PROGRAM, IF ANY.

I hereby certify that the information above is true and complete to the best of my knowledge and belief.

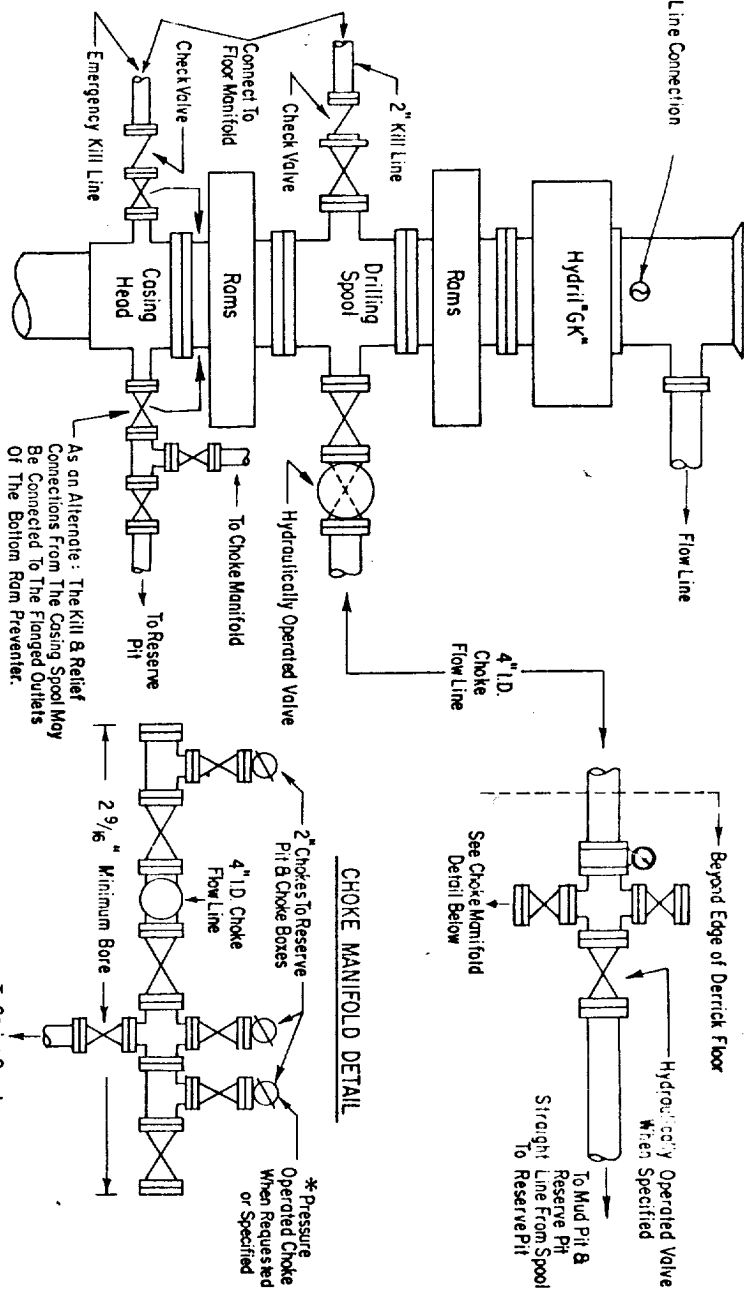
Signed W. Borland Title Area Production Manager Date June 10, 1975

(This space for State Use)  
APPROVED BY John W. Ramsey TITLE Geologist DATE \_\_\_\_\_  
CONDITIONS OF APPROVAL, IF ANY:

RECEIVED

JUN 11 1975

CL. CONSERVATION COMM.  
HOBBS, N. M.



### 3000 PSI WORKING PRESSURE BLOWOUT PREVENTER HOOK-UP

The blowout preventer assembly shall consist of one blind ram preventer and one pipe ram preventer, both hydraulically operated; a Hydril "GK" preventer, valves, chokes and connections as illustrated. If a tapered drill string is used, a ram preventer must be provided for each size of drill pipe. Casing and tubing rams to fit the preventers are to be available as needed. If correct in size, the flanged outlets of the ram preventer may be used for connecting to the 4-inch I.D. choke flow line and kill line, except when air or gas drilling. The substructure height shall be sufficient to install a rotating blowout preventer.

Minimum operating equipment for the preventers and hydraulically operated valves shall be as follows: (1) Multiple pumps, driven by a continuous source of power, capable of fluid charging the total accumulator volume from the nitrogen precharge pressure to its rated pressure within \_\_\_\_\_ minutes. Also, the pumps are to be connected to the hydraulic operating system which is to be a closed system. (2) Accumulators with a precharge of nitrogen of not less than 750 PSI and connected so as to receive the aforementioned fluid charge. With the charging pumps shut down, the pressurized fluid volume stored in the accumulators must be sufficient to close all the pressure-operated devices simultaneously within \_\_\_\_\_ seconds; after closure, the remaining accumulator pressure shall be not less than 1000 PSI with the remaining accumulator fluid volume at least \_\_\_\_\_ percent of the original. (3) When requested, an additional source of power, remote and equivalent, is to be available to operate the above pumps; or there shall be additional pumps operated by separate power and equal in performance capabilities.

The closing manifold and remote closing manifold shall have a separate control for each pressure-operated device. Controls are to be labeled, with control handles indicating open and closed positions. A pressure reducer and regulator must be provided for operating the Hydril preventer. When requested, a second pressure reducer shall be available to limit operating fluid pressures to ram preventers. Gulf Legion No. 38 hydraulic oil, or equivalent or better, is to be used as the fluid to operate the hydraulic equipment.

The choke manifold, choke flow line, and choke lines are to be supported by metal stands and adequately anchored. The choke flow line and choke lines shall be constructed as straight as possible and without sharp bends. Easy and safe access is to be maintained to the choke manifold. All valves are to be selected for operation in the presence of oil, gas, and drilling fluids. The choke flow line valves connected to the drilling spool and all ram type preventers must be equipped with stem extensions, universal joints if needed, and hand wheels which are to extend beyond the edge of the derrick substructure. All other valves are to be equipped with handwheels.

\* To include derrick floor mounted controls.

ADDITIONS - DELETIONS - CHANGES  
SPECIFY

RECEIVED

JUN 11 1975

OIL CONSERVATION COMM.  
HOODS, N. M.

NO. OF COPIES RECEIVED	
DISTRIBUTION	
SANTA FE	
FILE	
U.S.G.S.	
LAND OFFICE	
OPERATOR	

# NEW MEXICO OIL CONSERVATION COMMISSION

Form C-101  
Revised 1-1-65

5A. Indicate Type of Lease	
STATE <input type="checkbox"/>	FEE <input checked="" type="checkbox"/>
5. State Oil & Gas Lease No.	

## APPLICATION FOR PERMIT TO DRILL, DEEPEN, OR PLUG BACK

1a. Type of Work		7. Unit Agreement Name	
b. Type of Well OIL WELL <input checked="" type="checkbox"/> GAS WELL <input type="checkbox"/> OTHER <input type="checkbox"/> DRILL <input checked="" type="checkbox"/> DEEPEN <input type="checkbox"/> PLUG BACK <input type="checkbox"/>		8. Farm or Lease Name H. T. Mattern (NCT-D)	
2. Name of Operator Gulf Oil Corporation		9. Well No. 13	
3. Address of Operator Box 670, Hobbs, New Mexico 88240		10. Field and Pool, or Whedat. Drinkard	
4. Location of Well UNIT LETTER N LOCATED 810 FEET FROM THE South LINE AND 1930 FEET FROM THE West LINE OF SEC. 6 TWP. 22-S RGE. 37-E NMPM		12. County Lea	
19. Proposed Depth 6800'		19A. Formation Drinkard	
20. Rotary or C.T. Rotary		21. Elevations (Show whether DF, RT, etc.) 3457' GL	
21A. Kind & Status Plug. Bond Blanket		21B. Drilling Contractor	
22. Approx. Date Work will start June 20, 1975			

## PROPOSED CASING AND CEMENT PROGRAM

SIZE OF HOLE	SIZE OF CASING	WEIGHT PER FOOT	SETTING DEPTH	SACKS OF CEMENT	EST. TOP
11"	8-5/8"	24#	1150'	Circulate	
7-7/8"	5-1/2"	15.50#	6800'	Base of Salt	

BOP: See Drawing No. 3 attached.

APPROVAL VALID  
FOR 90 DAYS UNLESS  
DRILLING COMMENCED,  
EXPIRES Sept. 11, 1975

IN ABOVE SPACE DESCRIBE PROPOSED PROGRAM: IF PROPOSAL IS TO DEEPEN OR PLUG BACK, GIVE DATA ON PRESENT PRODUCTIVE ZONE AND PROPOSED NEW PRODUCTIVE ZONE. GIVE BLOWOUT PREVENTER PROGRAM, IF ANY.

I hereby certify that the information above is true and complete to the best of my knowledge and belief.

Signed [Signature] Title Area Production Manager Date June 10, 1975

(This space for State Use)

Geologist

APPROVED BY [Signature] TITLE Geologist DATE JUN 11 1975

CONDITIONS OF APPROVAL, IF ANY:

RECEIVED

JUN 11 1975

OLD CONSERVATION COMM.  
HOEBS, N. M.



Minimum operating equipment for the preventers and hydraulically operated valves shall be as follows: (1) Multiple pumps, driven by a continuous source of power, capable of fluid charging the total accumulator volume from the nitrogen precharge pressure to its rated pressure within \_\_\_\_\_ minutes. Also, the pumps are to be connected to the hydraulic operating system which is to be a closed system. (2) Accumulators with a precharge of nitrogen of not less than 750 PSI and connected so as to receive the aforementioned fluid charge. With the charging pumps shut down, the pressurized fluid volume stored in the accumulators must be sufficient to close all the pressure-operated devices simultaneously within \_\_\_\_\_ seconds, after closure, the remaining accumulator pressure shall be not less than 1000 PSI with the remaining accumulator fluid volume of at least \_\_\_\_\_ percent of the original. (3) When required, an additional source of power, remote and equivalent, is to be available to operate the above pumps, or there shall be additional pumps operated by separate power and equal in performance capabilities.

The closing manifold and remote locking manifold shall have a separate control for each pressure-operated device. Controls are to be labeled, with control handles indicating open and closed positions. A pressure reducer and regulator must be provided for operating the Hydrafll preventer. When requested, a second pressure reducer shall be available to limit operating fluid pressures to ram preventers. Gulf Legion No.-38 hydraulic oil, an equivalent or better, is to be used as the fluid to operate the hydraulic equipment.

The choke manifold, choke flow line, and choke lines are to be supported by metal stands and adequately anchored. The choke flow line and choke lines shall be constructed as straight as possible and without sharp bends. Easy and safe access is to be maintained to the choke manifold. All valves are to be selected for operation in the presence of oil, gas, and drilling fluids. The choke flow line valves connected to the drilling spool and all ram type preventers must be equipped with stem extensions, universal joints if needed, and hand wheels which are to extend beyond the edge of the derrick substructure. All other valves are to be equipped with handbars.

**\*To include derrick floor mounted controls**

RECEIVED

JUN 11 1975

U.S. CONSERVATION COMMISSION  
WASH., D. C.



NEW MEXICO OIL CONSERVATION COMMISSION  
WELL LOCATION AND ACREAGE DEDICATION PLAT

Form O-1  
Supersedes O-124  
Effective 10-1-55

All distances must be from the outer boundaries of the Section

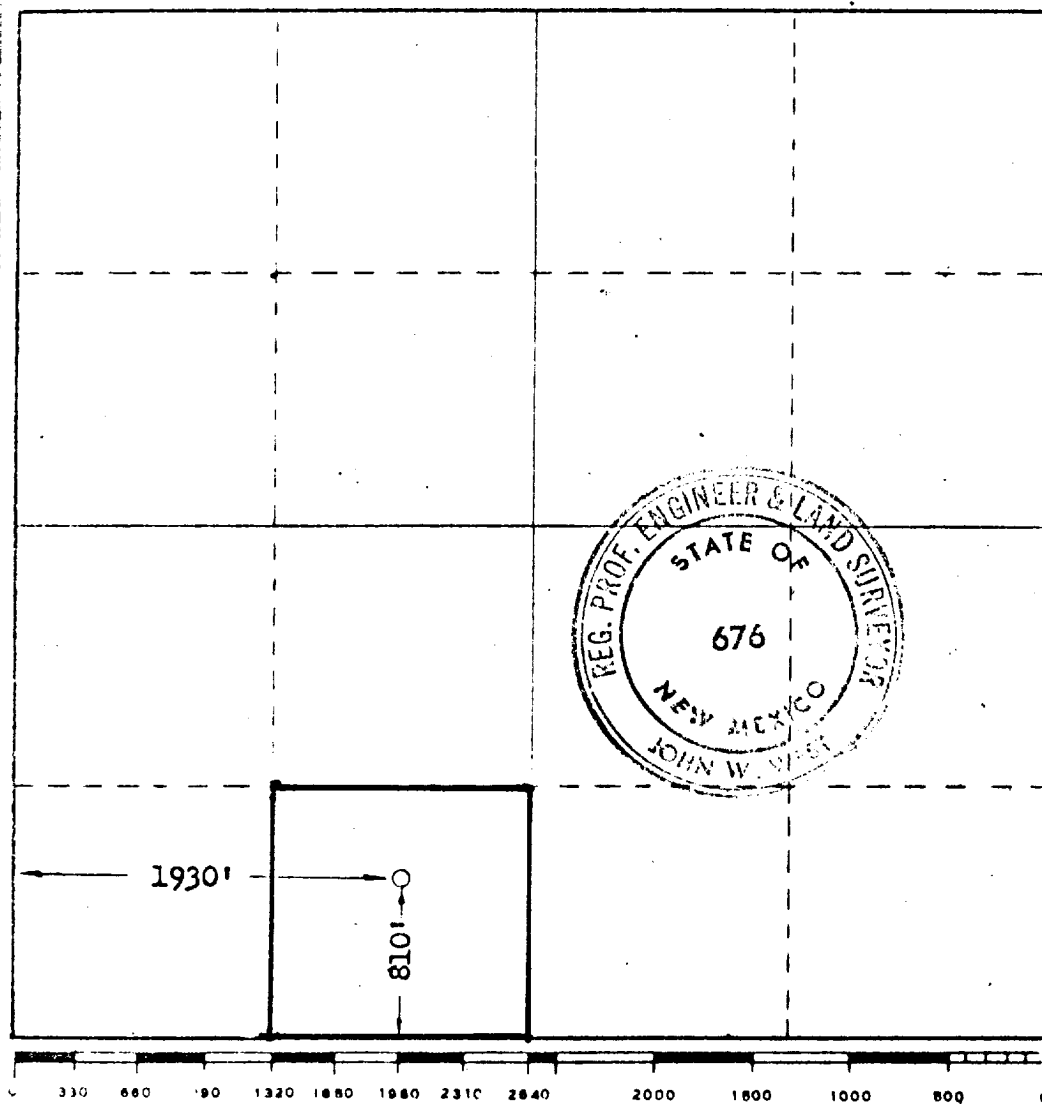
GULF OIL CORPORATION			Lessee H. T. Mattern NCT "D"		Well No. 13	
Section N	Section 6	Range 22 South	Range 37 East	County Lea		
A. Plot of the location of well.						
810		feet from the south line and	1930		feet from the west line	
3456.6		Acres of the tract	Drinkard		Acres of the tract	
		Drinkard	Drinkard		40	

1. Outline the acreage dedicated to the subject well by colored pencil or hachure marks on the plat below.
2. If more than one lease is dedicated to the well, outline each and identify the ownership thereof (both as to working interest and royalty).
3. If more than one lease of different ownership is dedicated to the well, have the interests of all owners been consolidated by communitization, unitization, force-pooling, etc?

☐ Yes ☐ No If answer is "yes," type of consolidation \_\_\_\_\_

If answer is "no," list the owners and tract descriptions which have actually been consolidated (Use reverse side of this form if necessary.) \_\_\_\_\_

No allowable will be assigned to the well until all interests have been consolidated (by communitization, unitization, forced-pooling, or otherwise) or until a non-standard unit, eliminating such interests, has been approved by the Commission.



CERTIFICATION

I hereby certify that the information contained herein is true and complete to the best of my knowledge and belief.

*C. D. Borland*

C. D. BORLAND

Position

Area Production Manager.

Company

Gulf Oil Corporation

Date

June 10, 1975

I hereby certify that the well location shown on this plat was plotted from field notes of actual surveys made by me or under my supervision, and that the same is true and correct to the best of my knowledge and belief.

Date Surveyed

June 9, 1975

Registered Professional Engineer and/or Land Surveyor

*John W. West*

Certificate No.

676

RECEIVED

JUN 11 1975

OIL CONSERVATION COMM.  
HOBBS, N. M.

173