

NO. OF COPIES RECEIVED	
DISTRIBUTION	
SANTA FE	
FILE	
U.S.G.S.	
LAND OFFICE	
OPERATOR	

# NEW MEXICO OIL CONSERVATION COMMISSION

Form C-101  
Revised 1-1-65

5A. Indicate Type of Lease
STATE <input type="checkbox"/> FEE <input checked="" type="checkbox"/>

5. State Oil & Gas Lease No.

## APPLICATION FOR PERMIT TO DRILL, DEEPEN, OR PLUG BACK

1a. Type of Work		7. Unit Agreement Name	
b. Type of Well OIL WELL <input checked="" type="checkbox"/> GAS WELL <input checked="" type="checkbox"/> OTHER <input type="checkbox"/> DEEPEN <input type="checkbox"/> PLUG BACK <input type="checkbox"/>		8. Farm or Lease Name Edith Butler "B"	
2. Name of Operator Marathon Oil Company		9. Well No. 2	
3. Address of Operator P.O. Box 2409 Hobbs, New Mexico 88240		10. Field and Pool, or Wildcat Undesignated	
4. Location of Well UNIT LETTER <u>J</u> LOCATED <u>1980</u> FEET FROM THE <u>East</u> LINE AND <u>2310</u> FEET FROM THE <u>South</u> LINE OF SEC. <u>13</u> TWP. <u>22S</u> RGE. <u>37E</u> NMPM		12. County Lea	
19. Proposed Depth 7600'		19A. Formation Granite Drinkard/Wash	
20. Rotary or C.T. Rotary		21. Elevations (Show whether DF, RT, etc.) 3319' GL (Estimate)	
21A. Kind & Status Plug. Bond Current		21B. Drilling Contractor Unknown	
22. Approx. Date Work will start July 31, 1975			

23.

## PROPOSED CASING AND CEMENT PROGRAM

SIZE OF HOLE	SIZE OF CASING	WEIGHT PER FOOT	SETTING DEPTH	SACKS OF CEMENT	EST. TOP
15"	10 3/4"	40.5#	1250'	600	Surface
8 1/2"	7"	23#	7600'	565	2500'

Plan to drill to a total depth of approximately 7600'.

All casing will be cemented and tested by approved methods.

Blowout equipment to be used is: 900 Series, Cameron or equivalent with pipe rams and blind rams. Remote controls will be located on derrick floor with closing unit located a minimum of 75' from wellhead.

APPROVAL VALID  
FOR 90 DAYS UNLESS  
DRILLING COMMENCED,

EXPIRES Oct 21, 1975

IN ABOVE SPACE DESCRIBE PROPOSED PROGRAM: IF PROPOSAL IS TO DEEPEN OR PLUG BACK, GIVE DATA ON PRESENT PRODUCTIVE ZONE AND PROPOSED NEW PRODUCTIVE ZONE. GIVE BLOWOUT PREVENTER PROGRAM, IF ANY.

I hereby certify that the information above is true and complete to the best of my knowledge and belief.

Signed M. L. Johnston Title Petroleum Engineer Date July 11, 1975

(Type space for State Use)

APPROVED BY John W. Runyan TITLE \_\_\_\_\_ DATE JUL 21 1975

CONDITIONS OF APPROVAL, IF ANY:

NEW MEXICO OIL CONSERVATION COMMISSION  
WELL LOCATION AND ACREAGE DEDICATION PLAT

Form O-1  
Supersedes C-128  
Effective 1-1-65

All distances must be from the outer boundaries of the Section

Marathon Oil Company

Edith Butler B

Well No. 2

J

13

22 South

37 East

Lea

1980

South

2310

East

3319.8

Drinkard/Granite Wash

Drinkard/Undesignated

40

1. Outline the acreage dedicated to the subject well by colored pencil or hatchure marks on the plat below.

2. If more than one lease is dedicated to the well, outline each and identify the ownership thereof (both as to working interest and royalty).

3. If more than one lease of different ownership is dedicated to the well, have the interests of all owners been consolidated by communitization, unitization, force-pooling, etc?

Yes No If answer is "yes," type of consolidation

If answer is "no" list the owners and tract descriptions which have actually been consolidated. (Use reverse side of this form if necessary.)

No allowable will be assigned to the well until all interests have been consolidated (by communitization, unitization, forced-pooling, or otherwise) or until a non-standard unit, eliminating such interests, has been approved by the Commission.

CERTIFICATION

I hereby certify that the information contained herein is true and complete to the best of my knowledge and belief.

*M. L. Johnston*

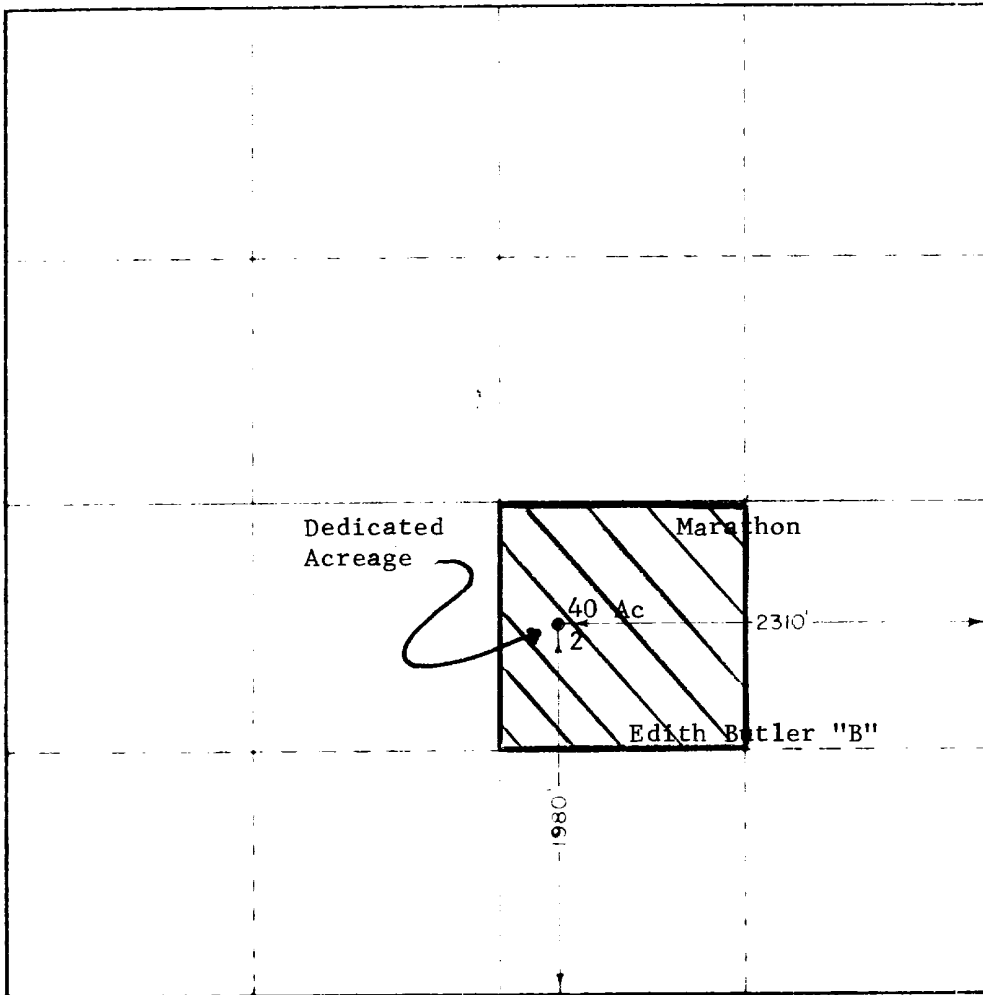
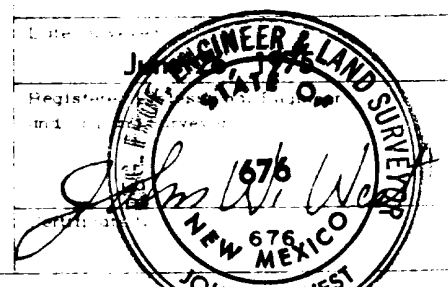
M. L. Johnston

Act. Operation Supt.

Marathon Oil Co.

7-18-75

I hereby certify that the well location shown on this plat was plotted from field notes of actual surveys made by me or under my supervision and that the same is true and correct to the best of my knowledge and belief.



RECEIVED

JUL 21 1975

U.S. CONSERVATION COMMISSION  
WASHINGTON, D.C.

171

## OIL CONSERVATION DIVISION

STATE OF NEW MEXICO

P. O. BOX 2088

ENERGY AND MINERALS DEPARTMENT

SANTA FE, NEW MEXICO 87501

Form C-102  
Revised 10-1-78

All distances must be from the outer boundaries of the Section.

Operator Marathon Oil Company			Lease Edith Butler "B"		Well No. 2
Unit Letter J	Section 13	Township 22-S	Range 37-E	County Lea	
Actual Footage Location of Well:					
1980 feet from the South line and		2310 feet from the East line			
Ground Level Elev. 3320	Producing Formation Blinebry	Pool Blinebry Oil & Gas		Dedicated Acreage: 40 Acres	

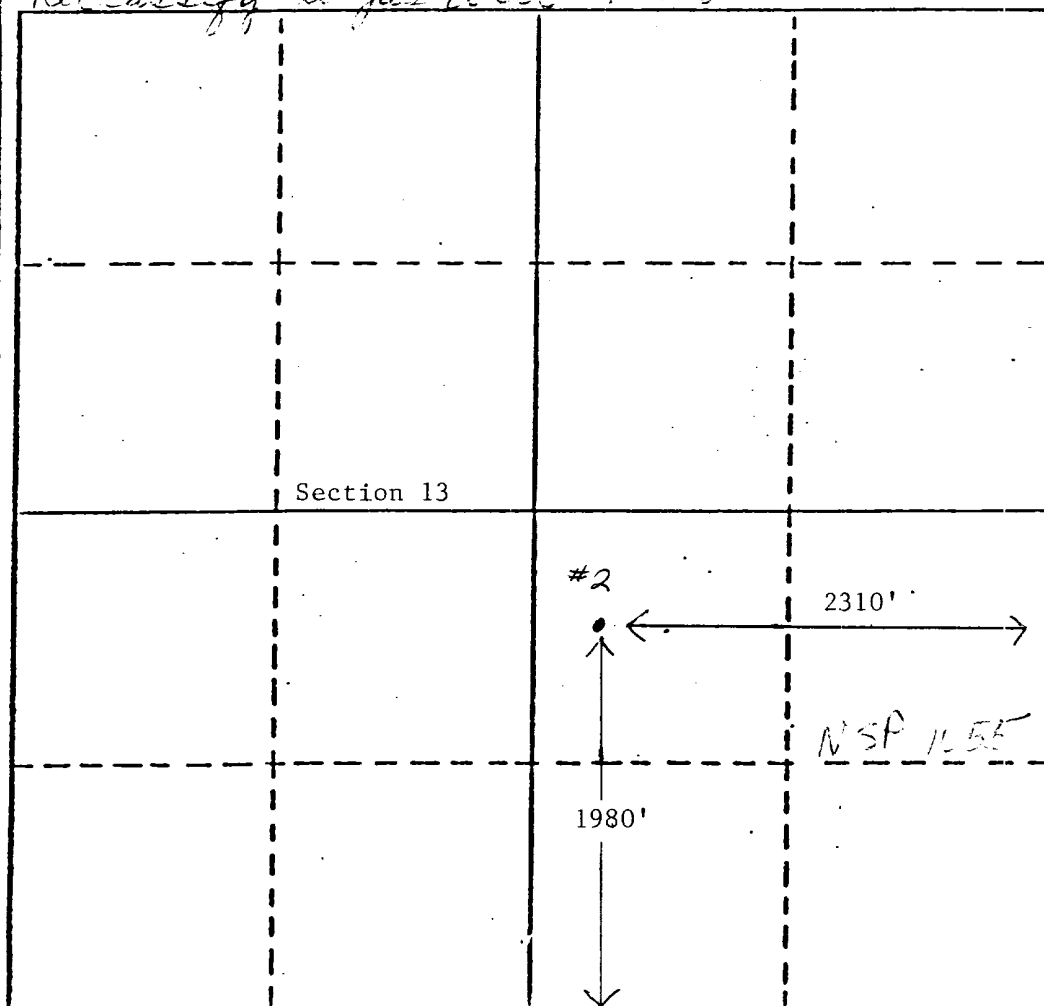
1. Outline the acreage dedicated to the subject well by colored pencil or hatchure marks on the plat below.
2. If more than one lease is dedicated to the well, outline each and identify the ownership thereof (both as to working interest and royalty).
3. If more than one lease of different ownership is dedicated to the well, have the interests of all owners been consolidated by communitization, unitization, force-pooling, etc?

☐ Yes ☐ No If answer is "yes," type of consolidation \_\_\_\_\_

If answer is "no," list the owners and tract descriptions which have actually been consolidated. (Use reverse side of this form if necessary.) \_\_\_\_\_

No allowable will be assigned to the well until all interests have been consolidated (by communitization, unitization, forced-pooling, or otherwise) or until a non-standard unit, eliminating such interests, has been approved by the Division.

*Reclassify to Gas well 1-1-87*



## CERTIFICATION

I hereby certify that the information contained herein is true and complete to the best of my knowledge and belief.

*Thomas F. Zaparka*

Name  
Thomas F. Zaparka

Position  
Prod. Engineer

Company  
Marathon Oil Company

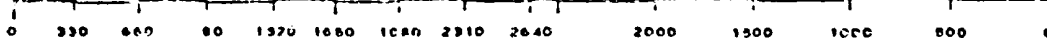
Date  
November 21, 1986

I hereby certify that the well location shown on this plat was plotted from field notes of actual surveys made by me or under my supervision, and that the same is true and correct to the best of my knowledge and belief.

Date Surveyed

Registered Professional Engineer  
and/or Land Surveyor

Certificate No.



Mid-Continent Region  
Exploration United States



**Marathon  
Oil Company**

P.O. Box 552  
Midland, Texas 79702  
Telephone 915/682-1626

November 21, 1986

Oil Conservation Division  
Hobbs District Office  
P. O. Box 1980  
Hobbs, New Mexico 88240

Subject Reference: Reclassification of Well  
Edith Butler B #2-J  
Sec. 13, T-22-S, R-37-E  
Blinebry Oil and Gas Pool

Dear Sir:

Marathon Oil Company will be dedicating the 40 acre non-standard proration unit approved by NSP-1055 in 1977, to this gas well classification. Enclosed is a C-102 outlining the dedicated acreage for this well. The transporter has not changed as a result of this reclassification and the gas is already being metered separately. If any further information is required, please contact this office. Thank you.

Sincerely,

MARATHON OIL COMPANY

Thomas F. Zapatka  
Production Engineer

XC: W. D. Holmes  
C. R. Hubacher



STATE OF NEW MEXICO  
**ENERGY AND MINERALS DEPARTMENT**  
OIL CONSERVATION DIVISION  
HOBBS DISTRICT OFFICE

TONY ANAYA  
GOVERNOR

November 4, 1986

POST OFFICE BOX 1980  
HOBBS, NEW MEXICO 88240  
(505) 393-6161

Marathon Oil Company  
P.O. Box 2409  
Hobbs, NM 88240

Re: Reclassification of Well  
Edith Butler B #2-J  
Section 13, T22S, R37E  
Blinebry Oil and Gas Pool

Gentlemen:

Due to the recently submitted gas/oil ratio test for the above-referenced well, it will be reclassified as a gas well in the Blinebry Oil and Gas Pool effective January 1, 1987, and the oil allowable will be cancelled that date.

If for some reason you feel this test does not reflect the proper classification of the well, please submit another test for our consideration. This test must be received before November 25, 1986.

Please advise this office if you will be dedicating the 40-acre non-standard proration unit approved by NSP-1055 (NW/4 SE/4 Sec. 13) to this gas well classification. Also, if the transporters change as a result of reclassification, please submit Form C-104 so indicating. Also, please advise this office if the gas is separately metered.

Very truly yours,

OIL CONSERVATION DIVISION

Jerry Sexton  
Supervisor, District I

ed

cc: Tom Zapatka  
Marathon Oil Company  
Box 552  
Midland, TX 79702

**NEW MEXICO OIL CONSERVATION COMMISSION  
WELL LOCATION AND ACREAGE DEDICATION PLAT**

Form C-102  
Supersedes C-128  
Effective 1-1-65

All distances must be from the outer boundaries of the Section.

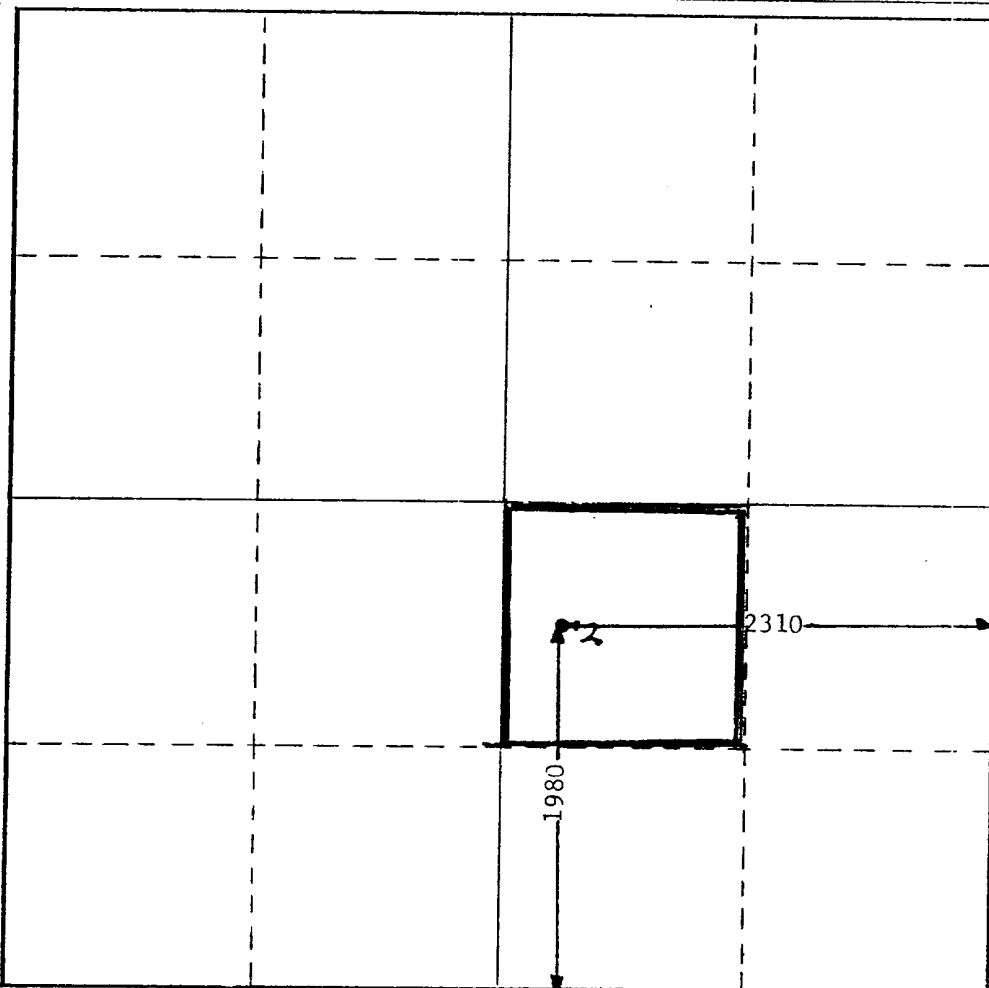
Operator <b>Marathon Oil Company</b>			Lease <b>Edith Butler "B" Lease</b>		Well No. <b>2</b>
Unit Letter <b>J</b>	Section <b>13</b>	Township <b>22-S</b>	Range <b>37-E</b>	County <b>Lea</b>	
Actual Footage Location of Well: <b>1980</b> feet from the <b>South</b> line and <b>2310</b> feet from the <b>East</b> line					
Ground Level Elev. <b>3323</b>	Producing Formation <b>Blinebry</b>		Pool <b>Blinebry</b>	Dedicated Acreage: <b>40</b> Acres	

1. Outline the acreage dedicated to the subject well by colored pencil or hachure marks on the plat below.
2. If more than one lease is dedicated to the well, outline each and identify the ownership thereof (both as to working interest and royalty).
3. If more than one lease of different ownership is dedicated to the well, have the interests of all owners been consolidated by communitization, unitization, force-pooling, etc?

☐ Yes    ☐ No    If answer is "yes," type of consolidation \_\_\_\_\_

If answer is "no," list the owners and tract descriptions which have actually been consolidated. (Use reverse side of this form if necessary.) \_\_\_\_\_

No allowable will be assigned to the well until all interests have been consolidated (by communitization, unitization, forced-pooling, or otherwise) or until a non-standard unit, eliminating such interests, has been approved by the Commission.



**CERTIFICATION**

*I hereby certify that the information contained herein is true and complete to the best of my knowledge and belief.*

*A. B. Kovacevic*

Name  
**Petroleum Engineer**

Position  
**Marathon Oil Company**

Company  
**July 1, 1977**

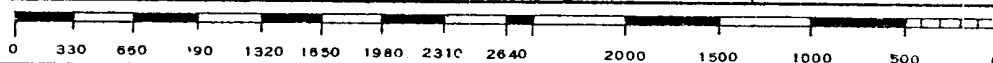
Date

*I hereby certify that the well location shown on this plat was plotted from field notes of actual surveys made by me or under my supervision, and that the same is true and correct to the best of my knowledge and belief.*

Date Surveyed

Registered Professional Engineer  
and/or Land Surveyor

Certificate No.



RECEIVED

JUL 1 1977

CLERK OF THE DISTRICT COURT  
U.S. DISTRICT COURT

Amended 14/2000 S Brunson Drinkard Abg  
 Oil 107 bbl Gas 428 mcf A

Oil Gas  
 89% 65%  
 11% 35%  
 WTR 219 bbl

DHC-1047 14/2/94 mca 40 Blinbry 046 Water 80 S. Brunson Drinkard Abg 4000 Blinbry

Oil 38% 62%  
 Gas 69% 31%

SE #5061 Reclass. to gas 1-1-87 (BL)

SE #4865 Rel. to oil 1/1/84 (BL)

SE #4230 Rel. to gas 1/1/77 (BL)

NSP-1055 40 ac. DM/4 2/13/80 13 (L)

MC-2253 Bl. + Re 6/1/11

F.R. 7-26-75  
(Drinkard & Granite Wash)  
11-17-75 AMEND LOCATION: Formerly reported as 2310' FSL,  
1980' FEL of Sec  
6-12-75 AMEND FIELD NAME: Formerly reported as Drinkard &  
Wantz  
10-2-75 TD 1274'; WOC  
10-8-75 Drlg 4638'  
10-15-75 Drlg 6825'  
10-22-75 Drlg 7475' lm & gw  
10-28-75 TD 7753'; WOC  
11-3-75 TD 7753'; SI  
Perf (Granite Wash) @ 7618', 7620', 7626',  
7628', 7630', 7632', 7653', 7659', 7666',  
7693', 7695', 7697', 7702' w/1 SPI  
Acid (7618-7702') 400 gals

6-2-21 NM

11-10-75

Continued

Frac (7618-7702') 25,000 gals oil + 25,500# sd

TD 7753'; PBD 7550'; Swbg Ld

Swbd 20 BLO in 24 hrs (7618-7702')

CIBP @ 7550'

Perf (Granite Wash) @ 7432', 7434', 7436',  
7438', 7447', 7449', 7451', 7453', 7455', 7457',  
7459' w/l SPI

Acid (7432-59') 500 gals

Swbd 52 BLO in 24 hrs (7432-59')

11-19-75

TD 7753'; PBD 7550'; RUP

12-3-75

TD 7753'; PBD 7550'; Ppg Ld

12-10-75

TD 7753'; PBD 7550'; Ppg Ld

6-2-21

NM

12-10-75

Continued

Ppd 6 BLO in 24 hrs (7432-59')

12-17-75

TD 7753'; PBD 7550'; SD Repairs

Ppd 3 BLO in 12 hrs (7432-59')

1-7-76

TD 7753'; PBD 7010'; Ppg Ld

Set BP @ 7010'

Perf (Drinkard) @ 6746', 6775', 6814', 6818',  
6821', 6825', 6827', 6829', 6851', 6853', 6855',  
6865', 6871', 6873', 6877', 6884', 6903', 6907',  
6944', 6946' w/l SPI

Acid (6746-6946') 5000 gals

Perf (Drinkard) 6851-6946' (overall)

Acid (6851-6946') 3000 gals

Frac (6746-6946') 15,500 gals + 10,500# sd

6-2-21

NM

1-14-76 TD 7753'; PBD 7010'; TOP  
Ppd 9 BW w/trace oil in 24 hrs (6746-6946')  
1-20-76 TD 7753'; PBD 7010'; TOP  
Ppd 3 BO + 8 BLW in 24 hrs (6746-6946')  
1-26-76 TD 7753'; PBD 7010'; TOP  
Ppd 5 BO + 9 BW in 24 hrs (6746-6946')  
2-2-76 TD 7753'; PBD 6595'; Prep Treat  
Ppd 2 BO + 8 BW in 24 hrs (6746-6946')  
PB to 6595'  
Perf (Drinkard) @ 6326', 6328', 6330', 6334',  
6352', 6380', 6389', 6391', 6394', 6396', 6401',  
6414', 6418', 6484', 6486', 6488', 6506',  
6508', 6510', 6512', 6514', 6534' w/1 SPI  
6-2-21 NM

2-9-76 TD 7753'; PBD 6595'; Tstg  
Acid (6326-6534') 3500 gals  
Frac (6326-6534') 27,000 gals wtr + 33,000# sd  
Flwd 28 BO + 200 MCFGPD in 24 hrs (6326-6534')  
2-17-76 TD 7753'; PBD 6595'; Tstg  
Flwd 26 BO + 8 BW in 24 hrs thru 18/64" chk,  
TP 100# (6326-6534')  
2-24-76 TD 7753'; PBD 6595'; Tstg  
Flwd 23 BO + 10 BLW in 24 hrs thru 18/64" chk,  
TP 100# (6326-6534')  
3-1-76 TD 7753'; PBD 6595'; Tstg  
Flwd 22 BO + 36 BLW in 24 hrs thru 18/64" chk,  
TP 100# (6326-6534')  
3-8-76 TD 7753'; PBD 6595'; Tstg  
Flwd 18 BO + 7 BLW in 24 hrs thru 18/64" chk,  
TP 100# (6326-6534')

6-2-21 NM

LEA  
MARATHON OIL CO.

Blinebry & Drinkard  
2 Butler, Edith "B"  
Sec 13, T22S, R37E

NM  
Page #4

3-15-76 TD 7753'; PBD 6595'; Tstg  
Flwd 14 BO + 3 BLW in 24 hrs thru 22/64" chk,  
TP 175# (6326-6534')  
3-22-76 TD 7753'; PBD 6595'; Tstg  
Flwd 14 BO + 1 BLW in 24 hrs thru 22/64" chk,  
TP 175# (6326-6534')  
3-29-76 TD 7753'; PBD 6595'; Tstg  
Flwd 17 BO + 2 BLW in 24 hrs thru 24/64" chk,  
TP 150# (6326-6534')  
4-5-76 TD 7753'; PBD 6595'; Tstg  
Flwd 15 BO + 2 BLW in 24 hrs thru 24/64" chk  
4-12-76 TD 7753'; PBD 6595'; Tstg

6-2-21 NM

4-12-76

Continued

Perf (Blinebry) @ 5466', 5468', 5470', 5473',  
5487', 5494', 5497', 5499', 5501', 5503',  
5505', 5507', 5553', 5559', 5561', 5569',  
5571', 5573', 5575', 5585', 5587', 5596',  
5598' w/1 SPI  
Acid (5466-5598') 4500 gals  
Frac (5466-5598') 40,000 gals + 45,500# sd  
Flwd 2436 MCFGPD + 38 BO + 44 BLW in 24 hrs thru  
1/2" chk, CP 550# (5466-5598')  
4-19-76 TD 7753'; PBD 6595'; Tstg  
Flwd 1590 MCFGPD + 8 BO + 11 BLW in 24 hrs  
thru 20/64" chk, CP 780# (5466-5598')  
4-26-76 TD 7753'; PBD 6595'; Tstg  
Flwd 1749 MCFGPD + 3 BO + 8 BLW in 24 hrs  
thru 20/64" chk, CP 450# (5466-5598')

6-2-21 NM

LEA  
MARATHON OIL CO.

Blinebry & Drinkard  
2 Butler, Edith "B"  
Sec 13, T22S, R37E

NM  
Page #5

5-3-76 TD 7753'; PBD 6595'; Tstg  
Flwd 154 MCFGPD + 8 BO in 24 hrs thru 27/64"  
chk, TP 70# (5466-5598')

5-10-76 TD 7753'; PBD 6595'; Tstg  
Flwd 17 EO + 294 MCFGPD in 24 hrs thru 1/2"  
chk, CP 700#, TP 60# (5466-5598')

5-17-76 TD 7753'; PBD 6595'; Tstg  
Flwd 17 BO + 306 MCFGPD in 24 hrs thru  
adj chk, CP 700#, TP 55# (5466-5598')

5-26-76 TD 7753'; PBD 6595'; Tstg  
Flwd 7 BO in 24 hrs thru 22/64" chk, CP  
840#, TP 50# (5466-5598')  
Flwd 19 BO + 20 BW in 24 hrs thru 21/64" chk,  
TP 190# (6326-6534')

6-2-21

NM

6-1-76 TD 7753'; PBD 6595'; Tstg  
Flwd 11 BO + 13 BW in 24 hrs thru 21/64" chk,  
TP 85# (6326-6534')  
Flwd 1420 MCFGPD + 19 BO + 122 BW in 24 hrs  
thru 32/64" chk, TP 360# (5466-5598')

6-7-76 TD 7753'; PBD 6595'; Complete  
Drinkard Completed 2-4-76  
LOG TOPS: Yates 2520', Queen 3352', San Andres  
3886', Glorieta 5060', Blinebry 5399', Tubb  
6039', Drinkard 6293', Granite Wash 7452',  
Granite 7650'  
LOGS RUN: DILL, CNDL

6-12-76 COMPLETION ISSUED

6-2-21

NM