

NEW MEXICO OIL CONSERVATION COMMISSION
WELL LOCATION AND ACREAGE DEDICATION PLAT

Form O-102
Supersedes O-129
Effective 1-1-55

All distances must be from the center borehole of the well.

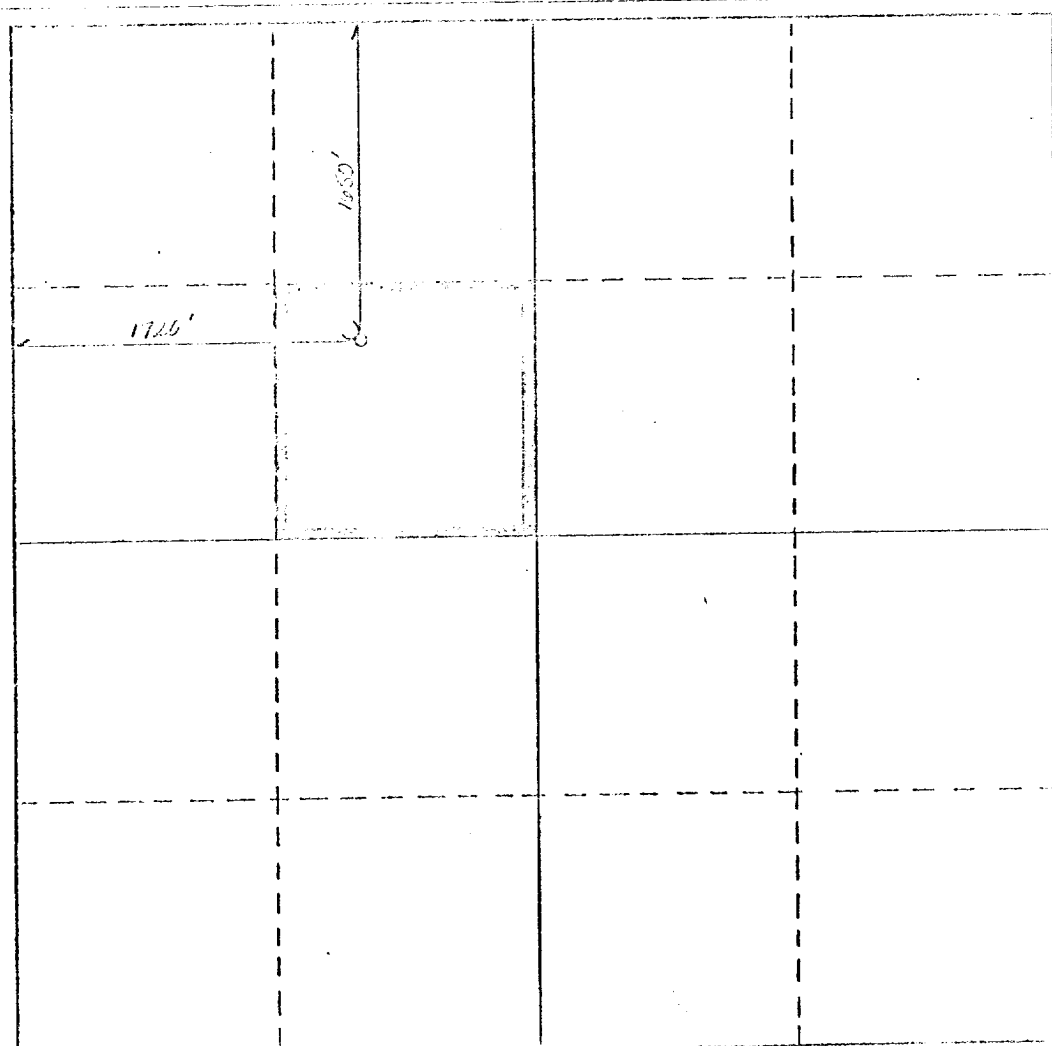
Operator GULF OIL CORPORATION			Lessee H. T. Galtbern (NORCO)		Well No. 17
County N	Section 7	Township 22S	Range 37E	County Lea	
Approximate Location of Well					
1650	feet from the North	1720	feet from the West	Hwy.	
3450'	Trub	Trub	Dedicated Acreage 40		Acres

- Outline the acreage dedicated to the subject well by colored pencil or hatchure marks on the plat below.
- If more than one lease is dedicated to the well, outline each and identify the ownership thereof (both as to working interest and royalty).
- If more than one lease of different ownership is dedicated to the well, have the interests of all owners been consolidated by communitization, unitization, force-pooling, etc?

☐ Yes ☐ No If answer is "yes," type of consolidation _____

If answer is "no," list the owners and tract descriptions which have actually been consolidated. (Use reverse side of this form if necessary.) _____

No allowable will be assigned to the well until all interests have been consolidated (by communitization, unitization, force-pooling, or otherwise) or until a non-standard unit, eliminating such interests, has been approved by the Commission.



CERTIFICATION

I hereby certify that the information contained herein is true and complete to the best of my knowledge and belief.

N.P. Sikes, Jr.
Name
N.P. Sikes, Jr.
Position
Area Engineer
Company
Gulf Oil Corporation
Date
9-21-79

I hereby certify that the well location shown on this plat was plotted from field notes of actual surveys made by me or under my supervision, and that the same is true and correct to the best of my knowledge and belief.

Date Surveyed
Registered Professional Engineer and/or Land Surveyor

Certificate No.

0 300 600 900 1200 1500 1800 2100 2400 2700 3000 3300 3600 3900 4200 4500 4800 5100 5400 5700 6000

RECEIVED

SEP 24 1971

O.C.D. HOBBS, OFFICE