

| | | |
|------------------------|--|--|
| NO. OF COPIES RECEIVED | | |
| DISTRIBUTION | | |
| SANTA FE | | |
| FILE | | |
| U.S.G.S. | | |
| LAND OFFICE | | |
| OPERATOR | | |

NEW MEXICO OIL CONSERVATION COMMISSION

Form C-101
Revised 1-4-65

| | |
|--------------------------------|---|
| 5A. Indicate Type of Lease | |
| STATE <input type="checkbox"/> | FEE <input checked="" type="checkbox"/> |
| 5. State Oil & Gas Lease No. | |

APPLICATION FOR PERMIT TO DRILL, DEEPEN, OR PLUG BACK

| | | | | | |
|---|--|--|---|--|---|
| 1a. Type of Work | | | 7. Unit Agreement Name | | |
| b. Type of Well OIL WELL <input checked="" type="checkbox"/> GAS WELL <input type="checkbox"/> OTHER <input type="checkbox"/> | | | 8. Form or Lease Name Walter Lynch | | |
| 2. Name of Operator Marathon Oil Company | | | 9. Well No. 6 | | |
| 3. Address of Operator P. O. Box 2409 Hobbs, New Mexico 88240 | | | 10. Field and Pool, or Wildcat Wantz Drinkard/Granite Wash | | |
| 4. Location of Well UNIT LETTER F LOCATED 2310 FEET FROM THE North LINE AND 1980 FEET FROM THE West LINE OF SEC. 1 TWP. 22S RGE. 37E NMPM | | | 12. County Lea | | |
| 19. Proposed Depth 7700' | | | 19A. Formation Granite Wash | | 20. Rotary or C.T. Rotary |
| 21. Elevations (Show whether DE, RT, etc.) 3352' Est. | | 21A. Kind & Status Plug. Bond Current | 21B. Drilling Contractor Unknown | | 22. Approx. Date Work will start October 1, 1975 |

23.

PROPOSED CASING AND CEMENT PROGRAM

| SIZE OF HOLE | SIZE OF CASING | WEIGHT PER FOOT | SETTING DEPTH | SACKS OF CEMENT | EST. TOP |
|--------------|----------------|-----------------|---------------|-----------------|-----------|
| 12-1/4" | 9-5/8" | 36# | 1250' | 610 sx | Circulate |
| 8-1/2" | 7" | 23# | 7700' | 1355 sx | 1200' |

Plan to drill to an approximate depth of 7700'. All casing will be cemented and tested by approved methods. Blow out equipment to be used is 900 Series Cameron or equivalent with pipe and blank rams. Remote controls will be located on derrick floor with closing unit located a minimum of 75' from the well head.

APPROVAL VALID
FOR 90 DAYS UNLESS
DRILLING COMMENCED,

EXPIRES Dec 23, 1975

IN ABOVE SPACE DESCRIBE PROPOSED PROGRAM: IF PROPOSAL IS TO DEEPEN OR PLUG BACK, GIVE DATA ON PRESENT PRODUCTIVE ZONE AND PROPOSED NEW PRODUCTIVE ZONE. GIVE BLOWOUT PREVENTER PROGRAM, IF ANY.

I hereby certify that the information above is true and complete to the best of my knowledge and belief.

Signed [Signature] Title Petroleum Engineer Date 9-19-75

(This space for State Use)

APPROVED BY [Signature] TITLE DATE

CONDITIONS OF APPROVAL, IF ANY:

xc: RPS JCH File

MLJ/rs

NEW MEXICO OIL CONSERVATION COMMISSION
WELL LOCATION AND ACREAGE DEDICATION PLAT

Form C-102
Supersedes C-128
Effective 1-1-65

All distances must be from the outer boundaries of the Section

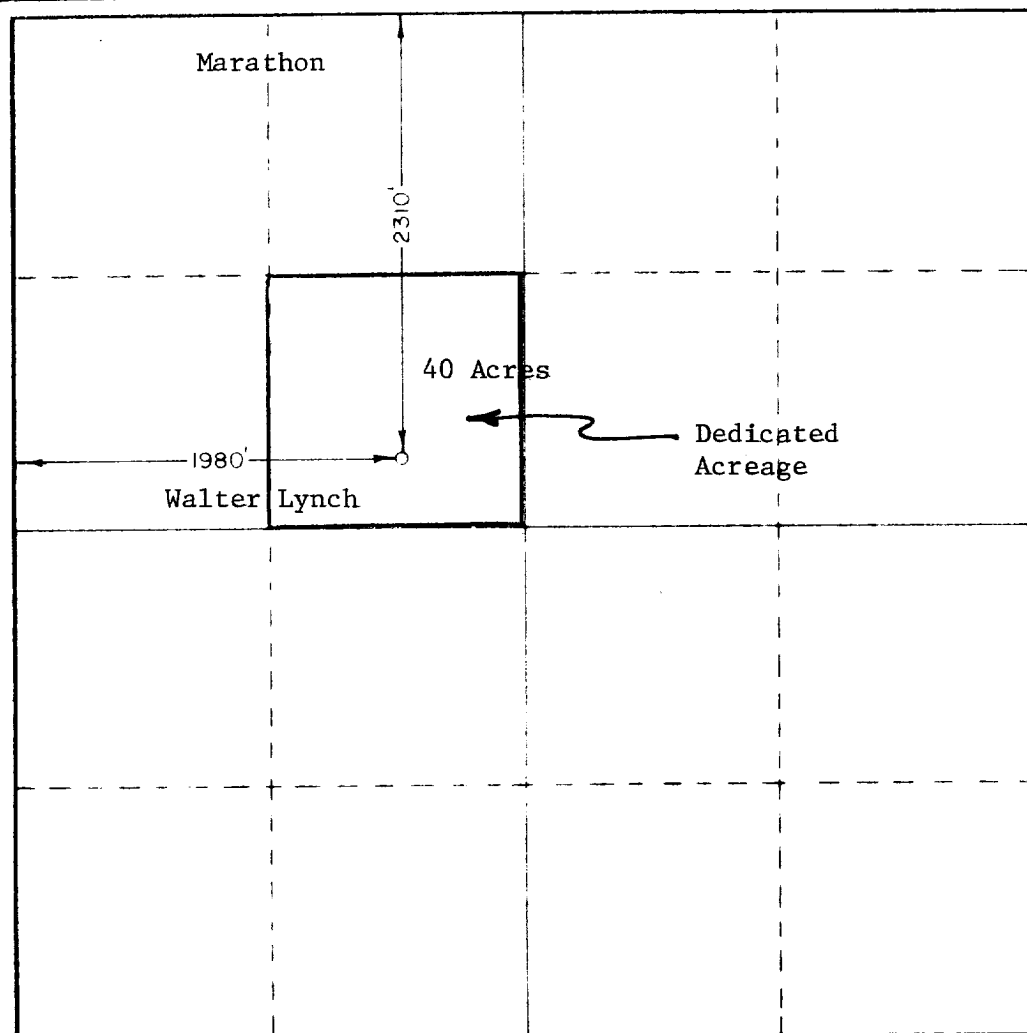
| | | | | | |
|---|--|-----------------------------|-----------------------------------|----------------------|---------------------------------------|
| Operator Marathon Oil Company | | | Lease Walter Lynch | | Well No. 6 |
| Section F | Section 1 | Township 22 South | Range 37 East | County Lea | |
| Approximate Location of Well: 2310 feet from the North line and 1980 feet from the West line | | | | | |
| Ground Level Elev. 3352 | Producing Formation Granite Wash | | Pool Wantz Granite Wash | | Dedicated Acreage: 40 Acres |

1. Outline the acreage dedicated to the subject well by colored pencil or hachure marks on the plat below.
2. If more than one lease is dedicated to the well, outline each and identify the ownership thereof (both as to working interest and royalty)
3. If more than one lease of different ownership is dedicated to the well, have the interests of all owners been consolidated by communitization, unitization, force-pooling, etc?

☐ Yes ☐ No If answer is "yes," type of consolidation _____

If answer is "no," list the owners and tract descriptions which have actually been consolidated. (Use reverse side of this form if necessary.) _____

No allowable will be assigned to the well until all interests have been consolidated (by communitization, unitization, forced-pooling, or otherwise) or until a non-standard unit, eliminating such interests, has been approved by the Commission.



CERTIFICATION

I hereby certify that the information contained herein is true and complete to the best of my knowledge and belief

M. L. Johnston

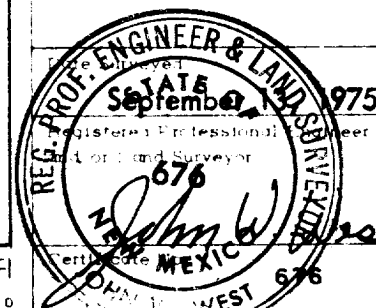
M. L. Johnston

Petroleum Engineer

Marathon Oil Company

September 19, 1975

I hereby certify that the well location shown on this plat was plotted from field notes of actual surveys made by me or under my supervision, and that the same is true and correct to the best of my knowledge and belief.



0 330 660 990 1320 1650 1980 2310 2640 2970 3300 3630 3960 4290 4620 4950 5280 5610 5940 6270 6600

NEW MEXICO OIL CONSERVATION COMMISSION
WELL LOCATION AND ACREAGE DEDICATION

Form C-102
Supersedes C-128
Effective 1-1-65

All distances must be from the outer boundaries of the Section

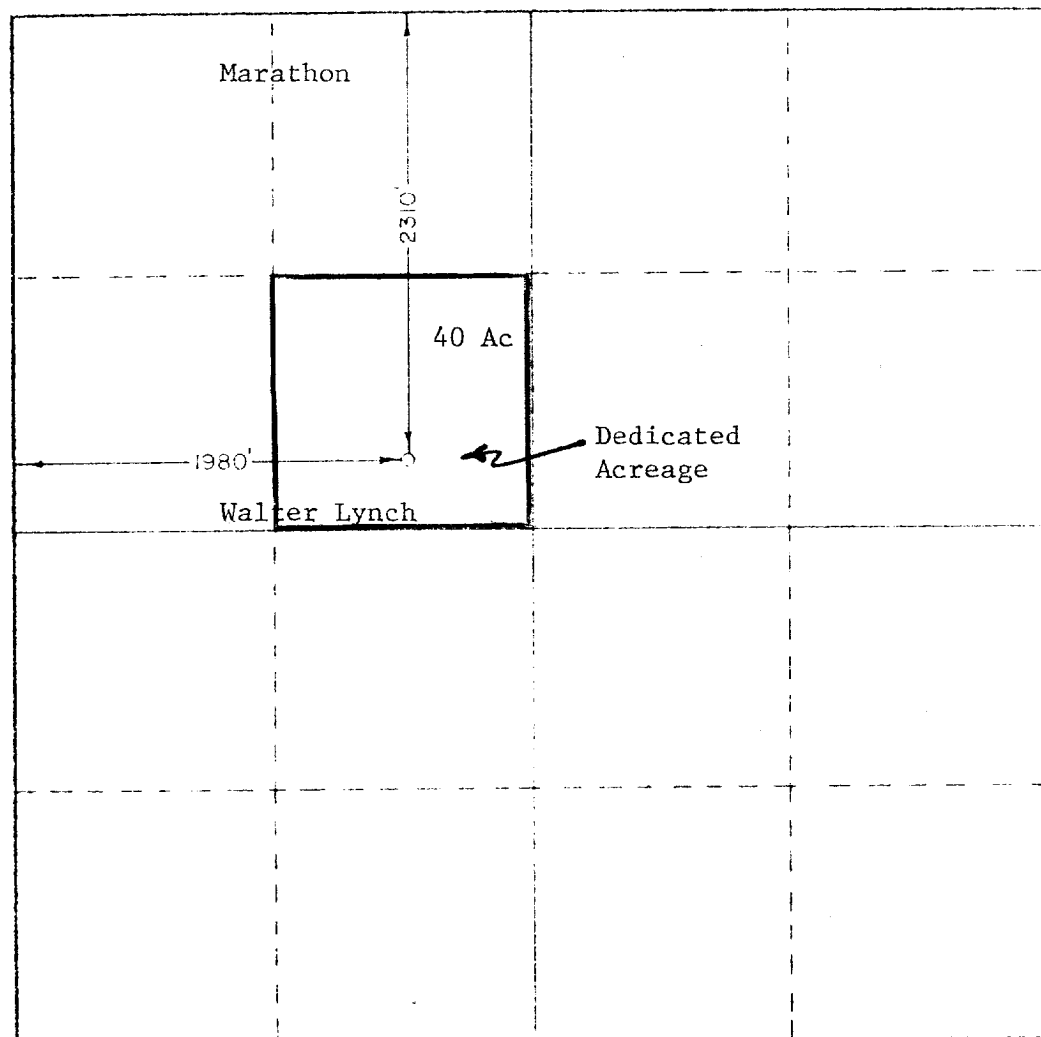
| | | | | | |
|---|--|-----------------------------|------------------------------|--------------------------------------|----------------------|
| Operator Marathon Oil Company | | | Lease Walter Lynch | | Well No. 6 |
| Tract Letter F | Section 1 | Township 22 South | Range 37 East | County Lea | |
| Actual Point of Location of Well: 2310 feet from the North line and 1980 feet from the West line | | | | | |
| Ground Level Elev. 3352 | Producing Formation Drinkard | | Pool Drinkard | Dedicated Acreage 40 Acres | |

1. Outline the acreage dedicated to the subject well by colored pencil or hatchure marks on the plat below.
2. If more than one lease is dedicated to the well, outline each and identify the ownership thereof (both as to working interest and royalty).
3. If more than one lease of different ownership is dedicated to the well, have the interests of all owners been consolidated by communitization, unitization, force-pooling, etc?

☐ Yes ☐ No If answer is "yes," type of consolidation _____

If answer is "no," list the owners and tract descriptions which have actually been consolidated. (Use reverse side of this form if necessary.) _____

No allowable will be assigned to the well until all interests have been consolidated (by communitization, unitization, forced-pooling, or otherwise) or until a non-standard unit, eliminating such interests, has been approved by the Commission.



CERTIFICATION

I hereby certify that the information contained herein is true and complete to the best of my knowledge and belief.

M. L. Johnston

Name
M. L. Johnston
Position
Petroleum Engineer
Company
Marathon Oil Company
Date
September 19, 1975

I hereby certify that the well location shown on this plat was plotted from field notes of actual surveys made by me or under my supervision, and that the same is true and correct to the best of my knowledge and belief.

ENGINEER & LAND SURVEYOR
STATE OF NEW MEXICO
September 13, 1975
Registered Professional Engineer
No. **5773**
John W. West
676

