

Submit to Appropriate  
District Office  
State Lease-4 copies  
Fee Lease-3 copies

State of New Mexico  
Energy, Minerals and Natural Resources Department

Form C-102  
Revised 1-1-89

OIL CONSERVATION DIVISION

P.O. Box 2088  
Santa Fe, New Mexico 87504-2088

DISTRICT I  
P.O. Box 1980, Hobbs, NM 88240

DISTRICT II  
P.O. Drawer DD, Artesia, NM 88210

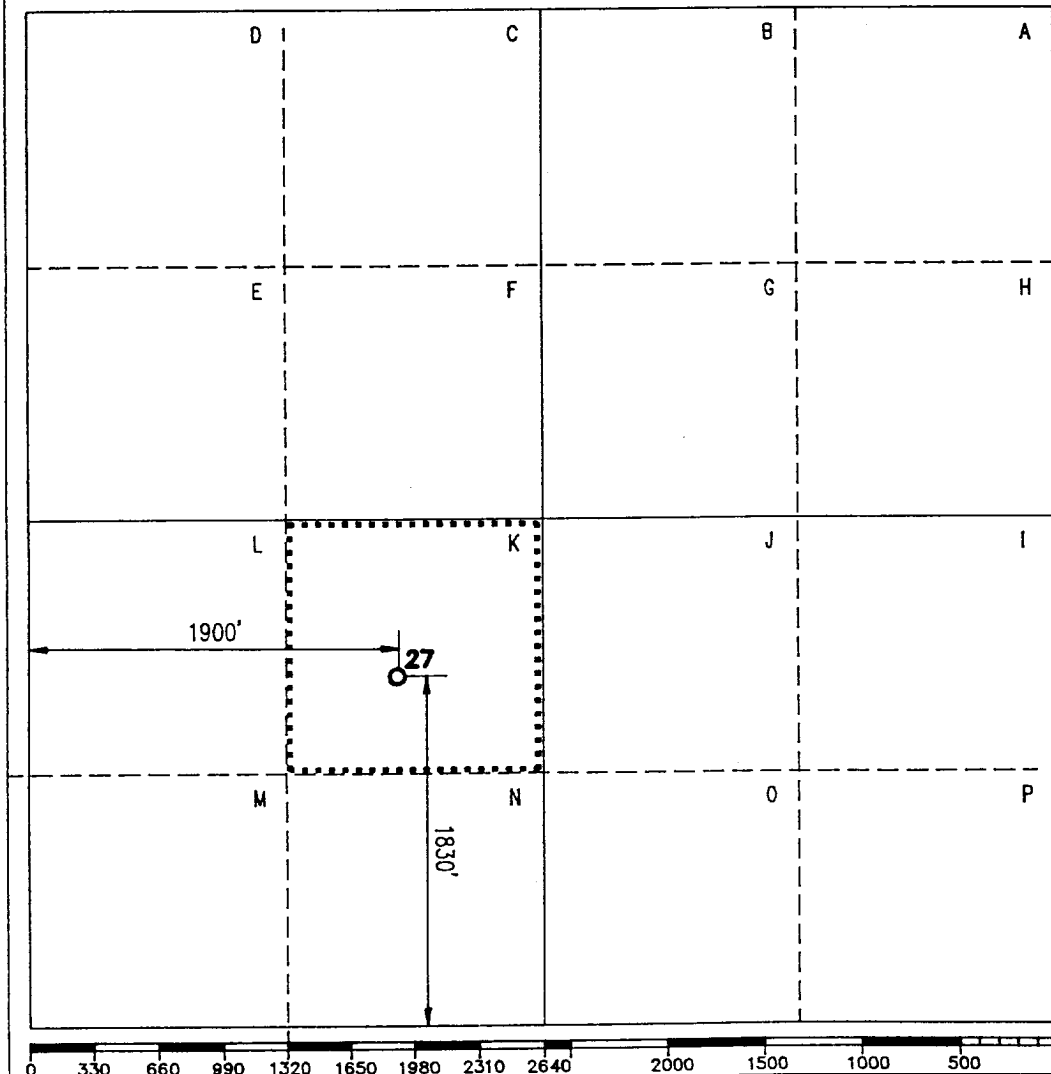
DISTRICT III  
1000 Rio Brazos Rd., Aztec, NM 87410

WELL LOCATION AND ACREAGE DEDICATION PLAT

All distances must be from the outer boundaries of the Section.

Operator Exxon Corporation			Lease NEW MEXICO "S" STATE		Well No. 27
Unit Letter K	Section 2	Township 22/S	Range 37/E	NMPM	County LEA
Actual Footage Location of Well: 1830 feet from the S line and 1900 feet from the W line.					
Ground level Elev. -	Producing Formation BLINEBRY		Pool BLINEBRY OIL & GAS		Dedicated Acreage: 40 Acres

- Outline the acreage dedicated to the subject well by colored pencil or hachure marks on the plat below.
- If more than one lease is dedicated to the well, outline each and identify the ownership thereof (both as to working interest and royalty).
- If more than one lease of different ownership is dedicated to the well, have the interest of all owners been consolidated by communitization, unitization, force-pooling, etc?  
☐ Yes ☐ No If answer is "yes", type of consolidation \_\_\_\_\_  
If answer is "no", list the owners and tract descriptions which have actually been consolidated. (Use reverse side of this form if necessary.) \_\_\_\_\_  
No allowable will be assigned to the well until all interests have been consolidated (by communitization, unitization, forced-pooling, or otherwise) or until a non-standard unit, eliminating such interest, has been approved by the Division.



OPERATOR CERTIFICATION

I hereby certify that the information  
contained herein is true and complete to the  
best of my knowledge and belief.

Signature  
*Charlotte Harper*

Printed Name  
Charlotte Harper

Position  
PERMITS SUPERVISOR

Company  
Exxon Corporation  
P.O. Box 1600-Midland, Tx.-79702

Date

SURVEYOR CERTIFICATION

I hereby certify that the well location  
shown on this plat was plotted from field  
notes of actual surveys made by me or  
under my supervision, and that the same  
is true and correct to the best of my  
knowledge and belief.

Date Surveyed  
10/13/75

Signature & Seal of  
Professional Surveyor

Certificate No.

2 Miles SE of EUNICE, New Mexico.

C.E. File No. A-6877A

PAGE

SEP 27 1940

NEW YORK  
HOME OFFICE