

NEW MEXICO OIL CONSERVATION COMMISSION
WELL LOCATION AND ACREAGE DEDICATION PLAT

Form C-102
Supersedes C-128
Effective 1-1-65

All distances must be from the outer boundaries of the Section.

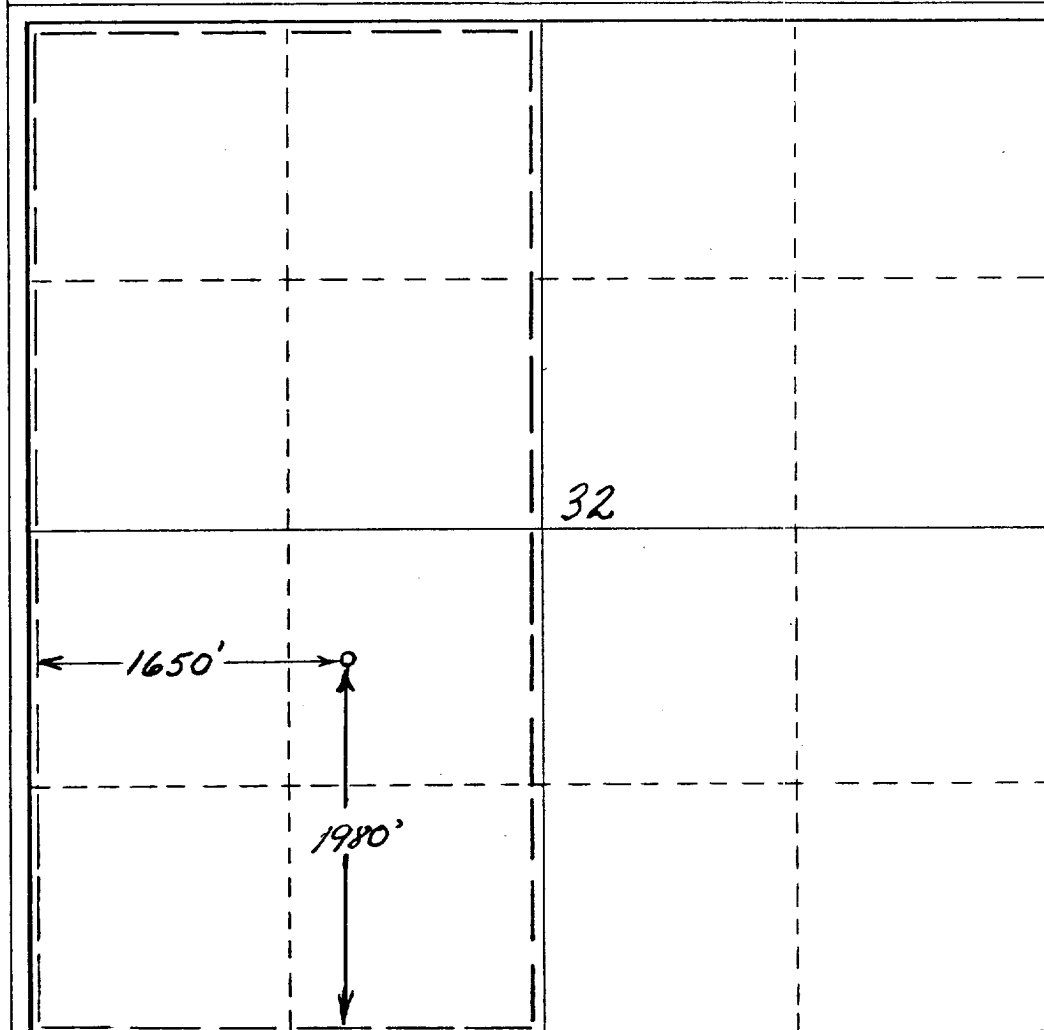
Operator CONTINENTAL OIL COMPANY		Lease BELL LAKE UNIT 1		Well No. 17
Unit Letter K	Section 32	Township 23-S	Range 34-E	County LEA
Actual Footage Location of Well: 1980 feet from the SOUTH line and 1650 feet from the WEST line				
Ground Level Elev. 3595'	Producing Formation ATOKA		Pool BELL LAKE ATOKA SO. (GAS)	Dedicated Acreage: 320 Acres

- Outline the acreage dedicated to the subject well by colored pencil or hatchure marks on the plat below.
- If more than one lease is dedicated to the well, outline each and identify the ownership thereof (both as to working interest and royalty).
- If more than one lease of different ownership is dedicated to the well, have the interests of all owners been consolidated by communitization, unitization, force-pooling, etc?

☐ Yes ☐ No If answer is "yes," type of consolidation _____

If answer is "no," list the owners and tract descriptions which have actually been consolidated. (Use reverse side of this form if necessary.) _____

No allowable will be assigned to the well until all interests have been consolidated (by communitization, unitization, forced-pooling, or otherwise) or until a non-standard unit, eliminating such interests, has been approved by the Commission.



CERTIFICATION

I hereby certify that the information contained herein is true and complete to the best of my knowledge and belief.

Name
C. L. Bradley
Position
Asst. Staff Asst
Company
Continental Oil Co.
Date
3-15-77

I hereby certify that the well location shown on this plat was plotted from field notes of actual surveys made by me or under my supervision, and that the same is true and correct to the best of my knowledge and belief.

Date Surveyed

Registered Professional Engineer and/or Land Surveyor

Certificate No.

RECEIVED

DEC 1 1977

LIBRARY OF THE
UNITED STATES DEPARTMENT OF
COMMERCE



COMPANIES
A Division of A.T. & T. Bell Corp.

© Copyrighted Reproduction Prohibited

COUNTY LEA FIELD Bell Lake, S. STATE NM
OPR CONTINENTAL OIL CO. API 30-025-25185
NO 17 LEASE Bell Lake Unit "1" SERIAL 5-1-11 NM
Sec 32, T23S, R34E MAP
1980' FSL, 1650' FWL of Sec CO-ORD
20 mi S & 13 mi E/Haltway ELEV LBS

SPD 9-5-76 CMP 1-24-77 WELL CLASS: INT. D FIN DG
CSG
FORMATION DATUM FORMATION DATUM
16" at 691' w/400 sx
10 3/4" at 5190' w/2670 sx
7 5/8" at 12,453' w/2050 sx
5" lnr 12,255-14,024' w/300 sx
TD 14,024' (MSSP) PBD

IP (Atoka-Morrow) Perfs 12,750-13,911' F 4000 MCF/CPD + 20 BC,
Pot based on 24 hr test thru 46/64" chk. GOR NR; gty 48.2; CP
Pkr; TP 1200#

CONTR Sharp OPR'S ELEV 3580' GL, 3601' KB PD 14,700' RT

F.R. 12-8-75

(Morrow)

6-14-76 AMEND FOOTAGE: Formerly reported as 1980' FSL,
1980' FWL of Sec
9-10-76 Drlg 1100' anhy
9-17-76 Drlg 4750' anhy
9-21-77 Drlg 7136' lm & sd
10-4-76 Drlg 9355' lm & sh
10-8-76 Drlg 10,426' lm, sh & cht
10-22-76 TD 12,458'; Prep Drill
11-1-76 Drlg 12,842' lm
11-8-76 Drlg 13,114' lm & sh
11-15-76 Drlg 13,420' lm, sd & sh
11-29-76 Drlg 13,883' lm, sd & sh

5-1-11 NM

LEA
CONTINENTAL OIL CO.

Bell Lake, S.
17 Bell Lake Unit "1"
Sec 32, T23S, R34E

NM
Page #2

12-6-76 TD 14,024'; Cond Mud
12-13-76 TD 14,024'; MO Rig
1-2-77 TD 14,024'; SI
1-10-77 TD 14,024'; Prep Perf
1-17-77 TD 14,024'; SI
Perf (Atoka-Morrow) 13,118-122', 13,445-456',
13,722-734', 13,833-838', 13,901-911' w/4 SPF
Acid (13,118-911') 63 bbls
1-24-77 TD 14,024'; SI
Perf (Atoka) 12,750-770', 12,795-805' w/4 SPF
Acid (12,750-805') 4000 gals
Flwd @ 3000-5000 MCFGPD + 144 BW in 24 hrs
thru 29/64" chk, TP 4300# (12,750-13,911')
5-1-11 NM

1-31-77 TD 14,024'; SI
2-7-77 TD 14,024'; SI
5-2-77 TD 14,024'; Complete
LOG TOPS: Rustler 1148', Salt 1293', Base
Salt 4900', Delaware Sand 5252', Bone Spring
8754', Strawn 12,436', Atoka 12,749', First
Morrow 13,418', Fourth Morrow 13,902'
LOGS RUN: DILL, CNL, FDC, BHC
BHT 183 deg
5-7-77 COMPLETION ISSUED

5-1-11 NM