

UNITED STATES
DEPARTMENT OF THE INTERIOR
GEOLOGICAL SURVEY

APPLICATION FOR PERMIT TO DRILL, DEEPEN, OR PLUG BACK

1a. TYPE OF WORK

DRILL ☒DEEPEN ☐PLUG BACK ☐

b. TYPE OF WELL

OIL
WELL ☒GAS
WELL ☐

OTHER

SINGLE
ZONE ☐MULTIPLE
ZONE ☒

2. NAME OF OPERATOR

TEXACO INC., c/o DARRELL SMITH

3. ADDRESS OF OPERATOR

P. O. BOX 3109, MIDLAND, TEXAS 79701

4. LOCATION OF WELL (Report location clearly and in accordance with any State requirements.)

At surface

660' FSL & 660' FEL, Sec. 19, T-22-S, R-38-E

At proposed prod. zone

Same

14. DISTANCE IN MILES AND DIRECTION FROM NEAREST TOWN OR POST OFFICE*

7 miles Southeast of Eunice, New Mexico

16. DISTANCE FROM PROPOSED*

LOCATION TO NEAREST

PROPERTY OR LEASE LINE, FT.

(Also to nearest drlg. unit line, if any)

660'

18. DISTANCE FROM PROPOSED LOCATION*

TO NEAREST WELL, DRILLING, COMPLETED,
OR APPLIED FOR, ON THIS LEASE, FT.

1358'

16. NO. OF ACRES IN LEASE

1855.12

19. PROPOSED DEPTH

7600'

17. NO. OF ACRES ASSIGNED
TO THIS WELL

40

20. ROTARY OR CABLE TOOLS

Rotary

21. ELEVATIONS (Show whether DF, RT, GR, etc.)

3371' Gr.

22. APPROX. DATE WORK WILL START*

At Once

23.

PROPOSED CASING AND CEMENTING PROGRAM

SIZE OF HOLE	SIZE OF CASING	WEIGHT PER FOOT	SETTING DEPTH	QUANTITY OF CEMENT
17 1/2"	13 3/8"	48#	400'	*650 sx (300% to Circulate)
12 1/4"	9 5/8"	32.3#, 36#	2900'	**1300 sx (200% to Tie Back)
8 3/4"	7"	23#, 26#	2700' to T.D.	***600 sx to Tie Back

*650 sx Class "C" + 1% CaCl₂, 14.8 PPG. Cement must circulate (300% to Circulate).

**1100 sx TLW with 15#/sx Salt followed by 200 sx Class "C" with 10#/sx Salt (200% to Tie Back).

***200 sx TLW with 3% CFR-2 followed by 300 sx Class "C" with 3% CFR-2. Squeeze top of liner with 100 sx Class "C" Neat.

FORMATION TOPS

MAR 5 1976	Glorieta	5155'	Abo Marker	6825'
	Blinbry	5560'	Permian-Granite Wash	7425'
	Tubb	6120'	Granite	7525'
	Drinkard	6310'	Total Depth	7600'

IN ABOVE SPACE DESCRIBE PROPOSED PROGRAM: If proposal is to deepen or plug back, give data on present productive zone and proposed new productive zone. If proposal is to drill or deepen directionally, give pertinent data on subsurface locations and measured and true vertical depths. Give blowout preventer program, if any.

24.

SIGNED

C. H. Moore
C. H. Moore

TITLE

Assistant Division
Petroleum Engineer

DATE

(This space for Federal or State office use)

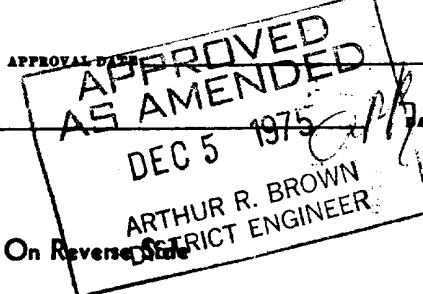
PERMIT NO.

APPROVAL DATE

APPROVED BY

TITLE

CONDITIONS OF APPROVAL, IF ANY:



*See Instructions On Reverse Side

RECEIVED

DEC 9 1975

OIL CONSERVATION COMM.
HODGS, R. H.

[Faint handwritten notes]

WELL LOCATION AND ACREAGE DEDICATION PLAT

Supersedes C-128
Effective 1-1-65

All distances must be from the outer boundaries of the Section.

Operator TEXACO Inc.			Lease A. H. Blinebry NCT-1		Well No. 40
Unit Letter P	Section 19	Township 22 South	Range 38 East	County Lea	
Actual Footage Location of Well: 660 feet from the South line and 660 feet from the East line Sec. 19					
Ground Level Elev. 3371'	Producing Formation Drinkard & Granite Wash		Pool Drinkard & Wantz (Granite Wash)		Dedicated Acreage: 40 Acres

1. Outline the acreage dedicated to the subject well by colored pencil or hachure marks on the plat below.

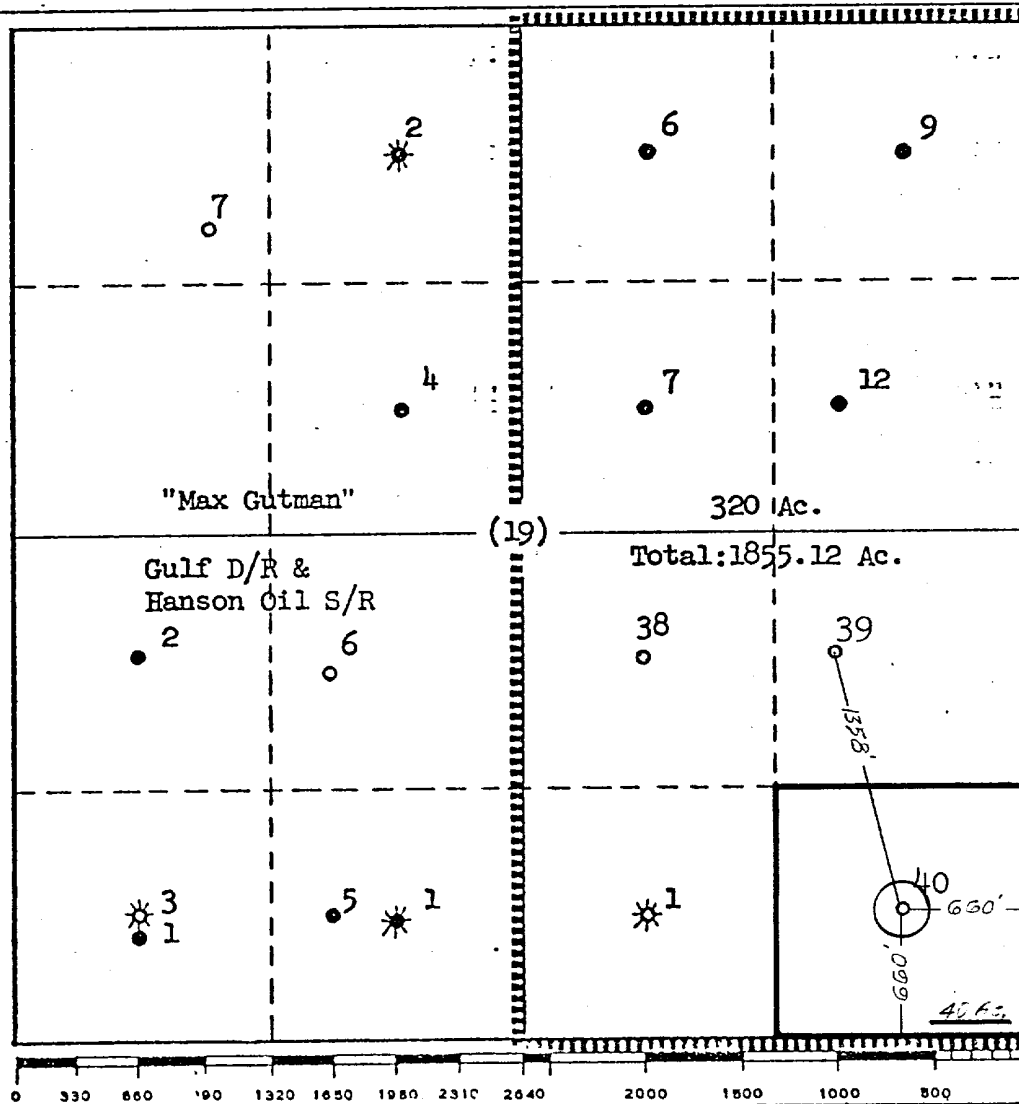
2. If more than one lease is dedicated to the well, outline each and identify the ownership thereof (both as to working interest and royalty).

3. If more than one lease of different ownership is dedicated to the well, have the interests of all owners been consolidated by communitization, unitization, force-pooling, etc?

☐ Yes ☐ No If answer is "yes," type of consolidation _____

If answer is "no," list the owners and tract descriptions which have actually been consolidated. (Use reverse side of this form if necessary.) _____

No allowable will be assigned to the well until all interests have been consolidated (by communitization, unitization, forced-pooling, or otherwise) or until a non-standard unit, eliminating such interests, has been approved by the Commission.



CERTIFICATION

I hereby certify that the information contained herein is true and complete to the best of my knowledge and belief.

Name

B. L. Eiland

Position

Division Surveyor

Company

TEXACO Inc.

Date

NOV 1975

I hereby certify that the well location shown on this plat was plotted from field notes of actual surveys made by me or under my supervision, and that the same is true and correct to the best of my knowledge and belief.

Date Surveyed

October 28, 1975

Registered Professional Engineer and/or Land Surveyor

B. L. Eiland

Certificate No.

4386

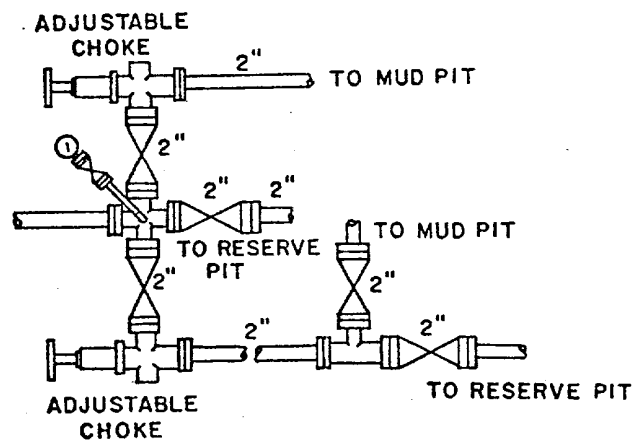
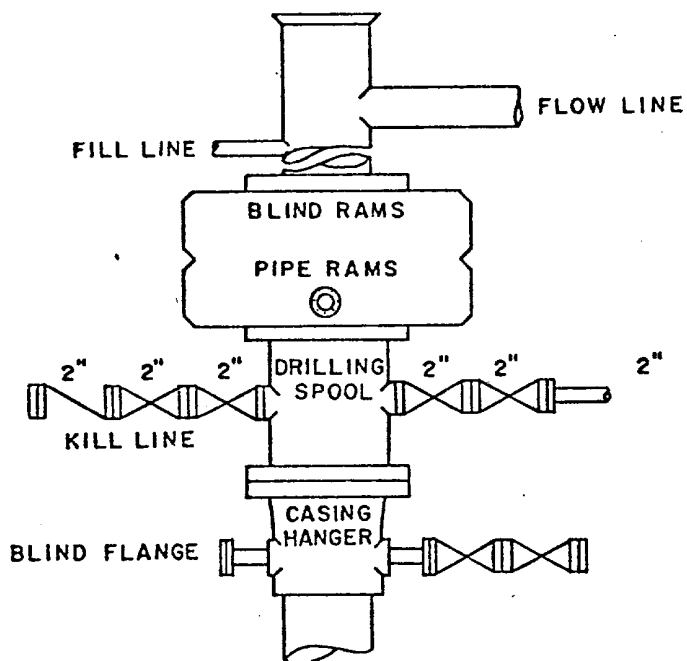
RECEIVED

DEC 9 1975

OIL CONSERVATION COMM.
HOODS, H. M.

UNITED STATES DEPARTMENT OF THE INTERIOR
GEOLOGICAL SURVEY
TEXACO INC.-A. H. BLINEBRY-FEDERAL NCT-1 WELL NO. 40, LEA COUNTY, NEW MEXICO

- | | | |
|------|--|--|
| (1) | Existing Roads | : See Exhibit "D" |
| (2) | Planned Access Roads | : See Exhibits "D" & "C" |
| (3) | Location of Wells | : See Exhibits "A" & "D" |
| (4) | Lateral Roads to Well Location | : See Exhibit "D" |
| (5) | Location of Tank Batteries | : See Exhibit "D" |
| (6) | Locations and Types of Water Supply | : See Exhibit "D" - Water used for drilling will be purchased from unknown source. |
| (7) | Methods for Handling Water Disposal | : Liquid waste will be hauled away. Trash and junk will be buried in a separate trash pit and covered with 24" of soil. |
| (8) | Location of Camps | : None |
| (9) | Location of Airstrips | : None |
| (10) | Location Layout to Include Position of the Rig, Mud Tanks, Reserve Pits, Burn Pits, Pipe Racks, Etc. | : See Exhibit "C" |
| (11) | Plans for Restoration of the Surface | : If in the event of a dry hole, all surface obstructions will be removed. Earthen pits and location pad will be restored to natural contours. |
| (12) | Blowout Preventer | : See Exhibit "B" |
| (13) | Other Information | : Texaco Inc. operations will be conducted in a reputable and responsible manner. |



SCALE: NONE	DATE	EST. NO.	DRG. NO.
DRAWN BY JWD			
CHECKED BY ROW			
APPROVED BY			

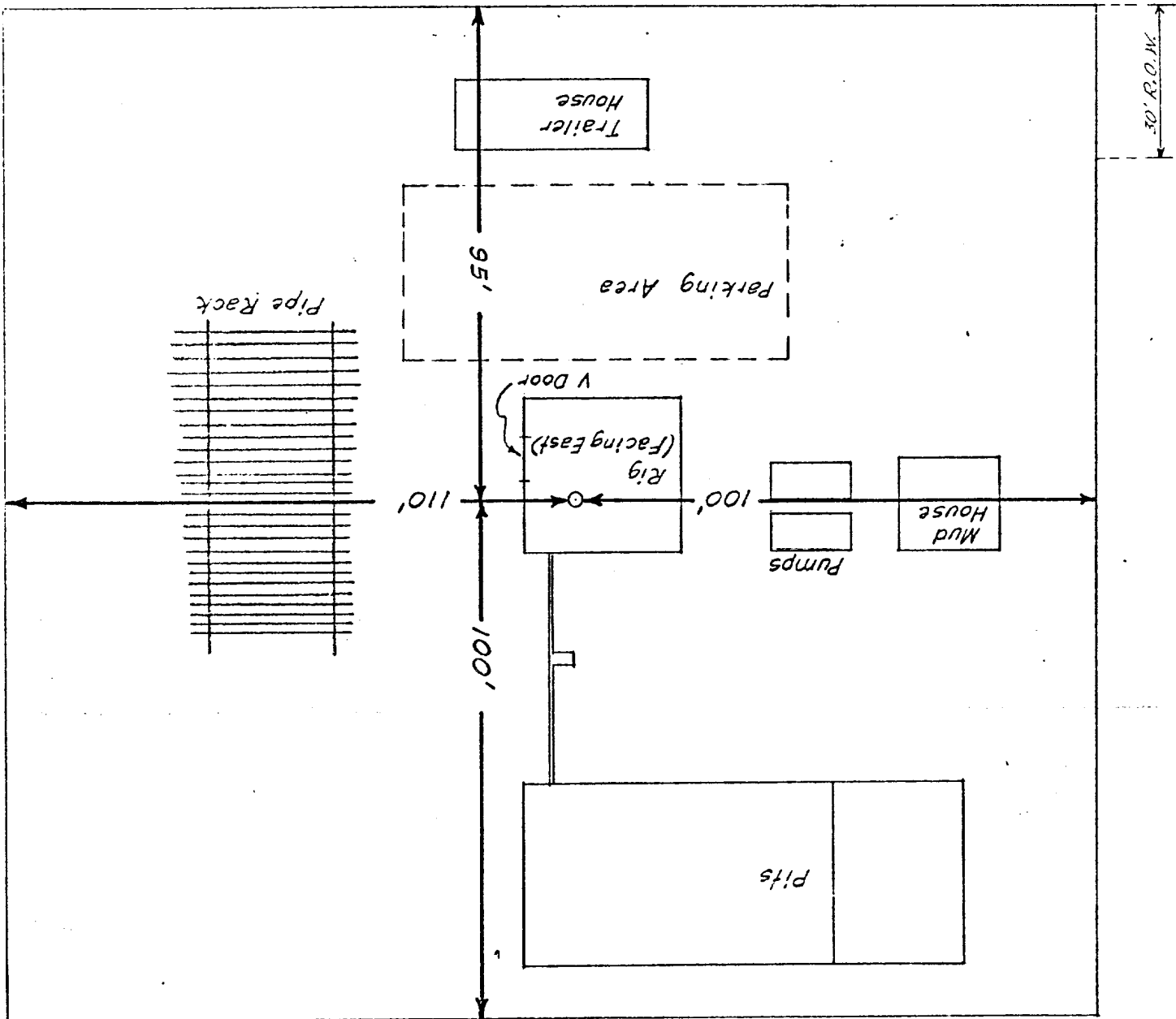


TEXACO, INC.
PRODUCING DEPARTMENT-U.S. (EAST)
MIDLAND, TEXAS

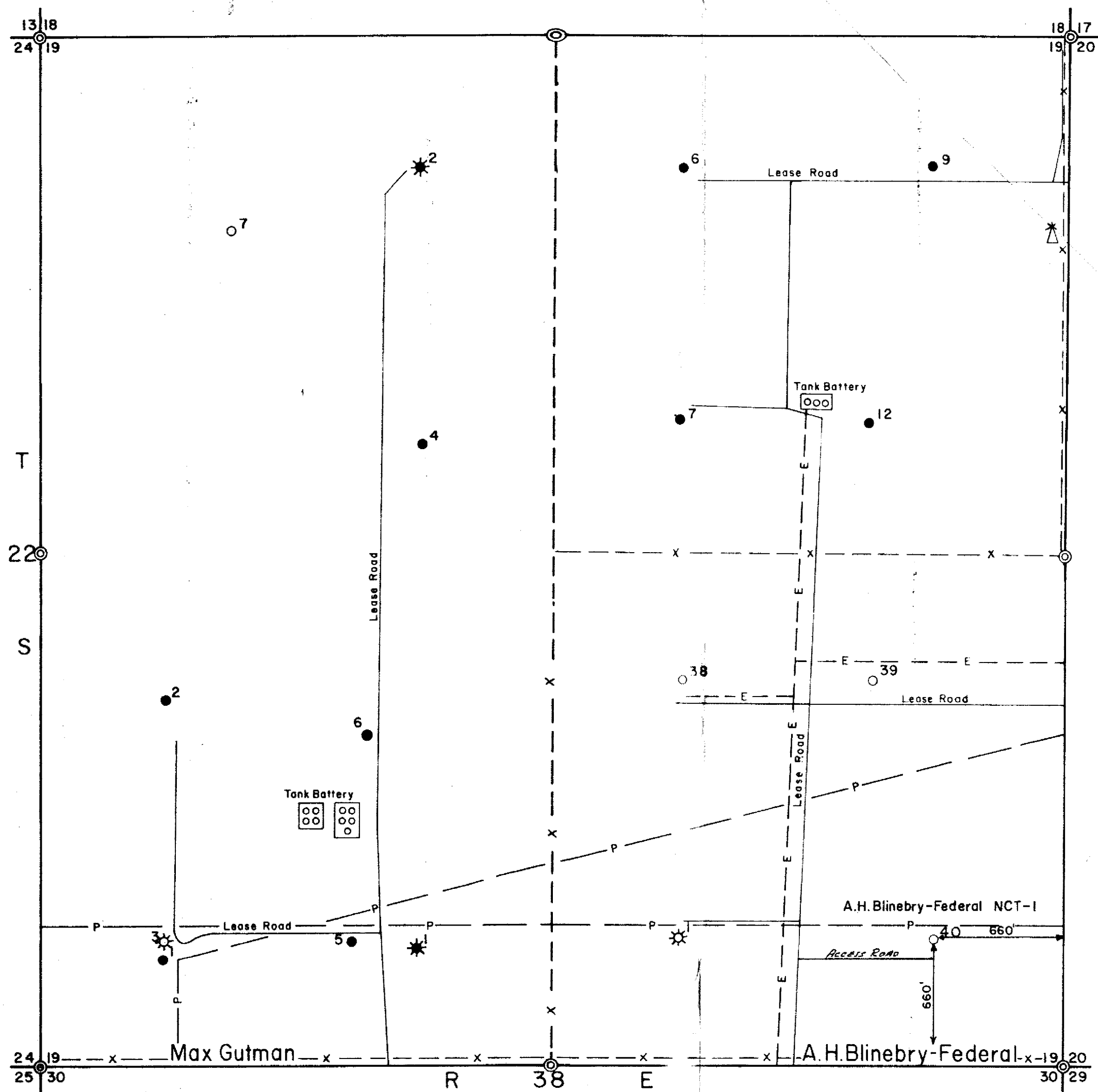


EXHIBIT "B"

A. H. BLINEBRY-FEDERAL NCT-1 WELL NO. 40



NORTH 



LEGEND

- G.L.O. Brass Cap
- Lease Road
- E— Electric Line
- X— Fence
- P— Pipeline

TEXACO INC.

FEDERAL IMPACT STUDY MAP
A.H. Blinebry-Federal NCT-1 NO. 40
660' /South & 660' /East Sec. 19
T-22-S R-38-E
Lea Co., New Mexico

Scale: 1" = 500'

10-30-75

Drawn: ETP