

|                        |  |  |
|------------------------|--|--|
| NO. OF COPIES RECEIVED |  |  |
| DISTRIBUTION           |  |  |
| SANTA FE               |  |  |
| FILE                   |  |  |
| U.S.G.S.               |  |  |
| LAND OFFICE            |  |  |
| OPERATOR               |  |  |

# NEW MEXICO OIL CONSERVATION COMMISSION

Form C-101  
Revised 1-1-65

## SECOND AMENDED

|   |                              |
|---|------------------------------|
| 5A. Indicate Type of Lease                |                              |
| STATE <input checked="" type="checkbox"/> | FEE <input type="checkbox"/> |
| 5. State Oil & Gas Lease No.              |                              |
| B-934                                     |                              |

## APPLICATION FOR PERMIT TO DRILL, DEEPEN, OR PLUG BACK

|   |  |   |  |
|---|--|---|--|
| 1a. Type of Work  |  | 7. Unit Agreement Name  |  |
| b. Type of Well<br>OIL WELL <input checked="" type="checkbox"/> GAS WELL <input type="checkbox"/> OTHER <input type="checkbox"/>  |  | 8. Farm or Lease Name<br>New Mexico "S" State                     |  |
| 2. Name of Operator<br>EXXON CORPORATION  |  | 9. Well No.<br>32   |  |
| 3. Address of Operator<br>P. O. BOX 1600, MIDLAND, TEXAS 79701  |  | 10. Field and Pool, or Wildcat<br>Drinkard & Wantz - Granite Wash |  |
| 4. Location of Well<br>UNIT LETTER <u>G</u> LOCATED <u>2300</u> FEET FROM THE <u>North</u> LINE<br>AND <u>1980</u> FEET FROM THE <u>East</u> LINE OF SEC. <u>2</u> TWP. <u>22-S</u> RGE. <u>37-E</u> NMPM |  | 12. County<br>Lea   |  |
| 19. Proposed Depth<br>8,000'  |  | 19A. Formation<br>Granite Drinkard & Wash                         |  |
| 20. Rotary or C.T.<br>Rotary  |  | 21. Elevations (Show whether DF, RT, etc.)<br>To be filed later   |  |
| 21A. Kind & Status Plug. Bond<br>Blanket on file  |  | 21B. Drilling Contractor<br>Warton Drilling Co.                   |  |
| 22. Approx. Date Work will start<br>9-20-76   |  |   |  |

23.

## PROPOSED CASING AND CEMENT PROGRAM

| SIZE OF HOLE | SIZE OF CASING | WEIGHT PER FOOT | SETTING DEPTH | SACKS OF CEMENT | EST. TOP         |
|--------------|----------------|-----------------|---------------|-----------------|------------------|
| 13-3/4"      | 10-3/4"        | 40.5#           | 1,200'        | 700             | Circ. to surface |
| 8-3/4"       | 7"             | 23 & 26#        | 8,000'        | 1740            | 1200'*           |

\* Circulate back into surface casing @ 1200' to protect from corrosive water.

Howco method of cementing to be used. A diagrammatic sketch and specifications of Blowout Preventer equipment is attached.

Mud Program: 0 - 1,200' Fresh Water or Spud Mud  
1,200 - 6,000' 10# Brine Water Mud  
6,000 - T.D. 10.0# - 10.2# Brine Water Mud

This second amended Form C-101 is to change Pool name from Wantz Abo to Wantz - Granite Wash and proposed depth from 7,300' to 8,000'.

APPROVAL VALID  
FOR 90 DAYS UNLESS  
DRILLING COMMENCED

IN ABOVE SPACE DESCRIBE PROPOSED PROGRAM: IF PROPOSAL IS TO DEEPEN EXISTING WELL, GIVE DEPTH OF PROPOSED NEW PRODUCTIVE ZONE. GIVE BLOWOUT PREVENTER PROGRAM, IF ANY.

I hereby certify that the information above is true and complete to the best of my knowledge and belief.

Signed Melba Kripling Title Proration Specialist Date 9-14-76

(This space for State Use)

SUPERVISOR DISTRICT 1

SEP 16 1976

APPROVED BY Jerry Sexton TITLE  DATE

CONDITIONS OF APPROVAL, IF ANY:

RECEIVED

SEP 15 1976

OIL CONSERVATION COMM.  
HOBBS, N. M.

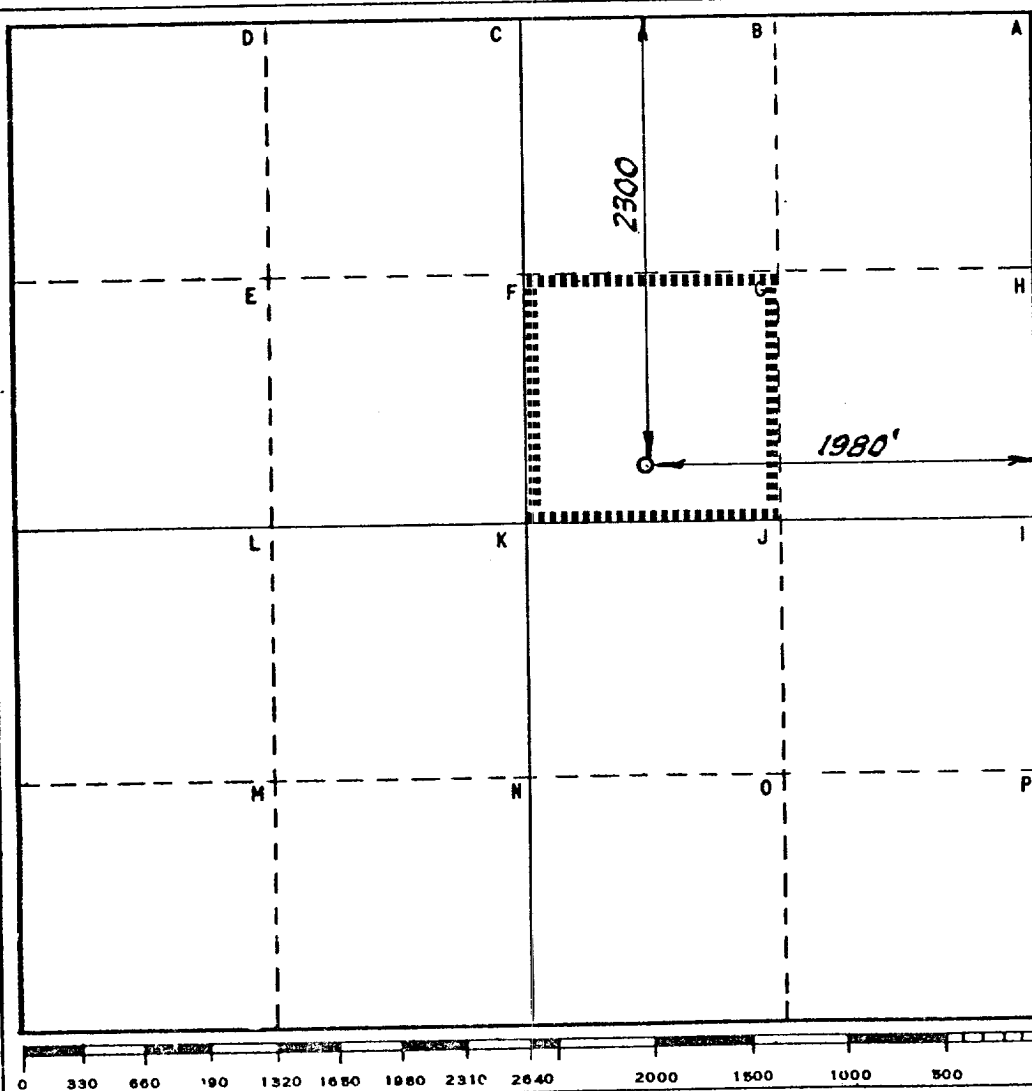
|  |   |                                      |  |                                       |
|--|---|--------------------------------------|--|---------------------------------------|
| Operator<br><b>Exxon Corporation</b>   |   | Lease<br><b>New Mexico "S" State</b> |  | Well No.<br><b>32</b>                 |
| Unit Letter<br><b>G</b>  | Section<br><b>2</b>                                     | Township<br><b>22 South</b>          | Range<br><b>37 East</b>                        | County<br><b>Lea</b>                  |
| Actual Footage Location of Well:<br><b>2300</b> feet from the <b>North</b> line and <b>1980</b> feet from the <b>East</b> line |   |                                      |  |                                       |
| Ground Level Elev:   | Producing Formation<br><b>Drinkard and Granite Wash</b> |                                      | Pool<br><b>Drinkard and Wantz-Granite Wash</b> | Dedicated Acreage:<br><b>40</b> Acres |

1. Outline the acreage dedicated to the subject well by colored pencil or hachure marks on the plat below.
2. If more than one lease is dedicated to the well, outline each and identify the ownership thereof (both as to working interest and royalty).
3. If more than one lease of different ownership is dedicated to the well, have the interests of all owners been consolidated by communitization, unitization, force-pooling, etc?

☐ Yes ☐ No If answer is "yes," type of consolidation \_\_\_\_\_

If answer is "no," list the owners and tract descriptions which have actually been consolidated. (Use reverse side of this form if necessary.) \_\_\_\_\_

No allowable will be assigned to the well until all interests have been consolidated (by communitization, unitization, forced-pooling, or otherwise) or until a non-standard unit, eliminating such interests, has been approved by the Commission.



#### CERTIFICATION

I hereby certify that the information contained herein is true and complete to the best of my knowledge and belief.

Name Tracie Kripling  
Position Proration Specialist  
Company Exxon Corporation  
Box 1600 Midland, Texas  
Date 5-11-76

I hereby certify that the well location shown on this plat was plotted from field notes of actual surveys made by me or under my supervision, and that the same is true and correct to the best of my knowledge and belief.

Date Surveyed 5/10/76  
Registered Professional Engineer and/or Land Surveyor

H. S. Westerfeld  
Certificate No. 1382

RECEIVED

SEP 15 1976

OIL CONSERVATION COMM.  
HOBBS, N. M.

BLOWOUT PREVENTER SPECIFICATION  
EQUIPMENT DESCRIPTION

---

TYPE II-C

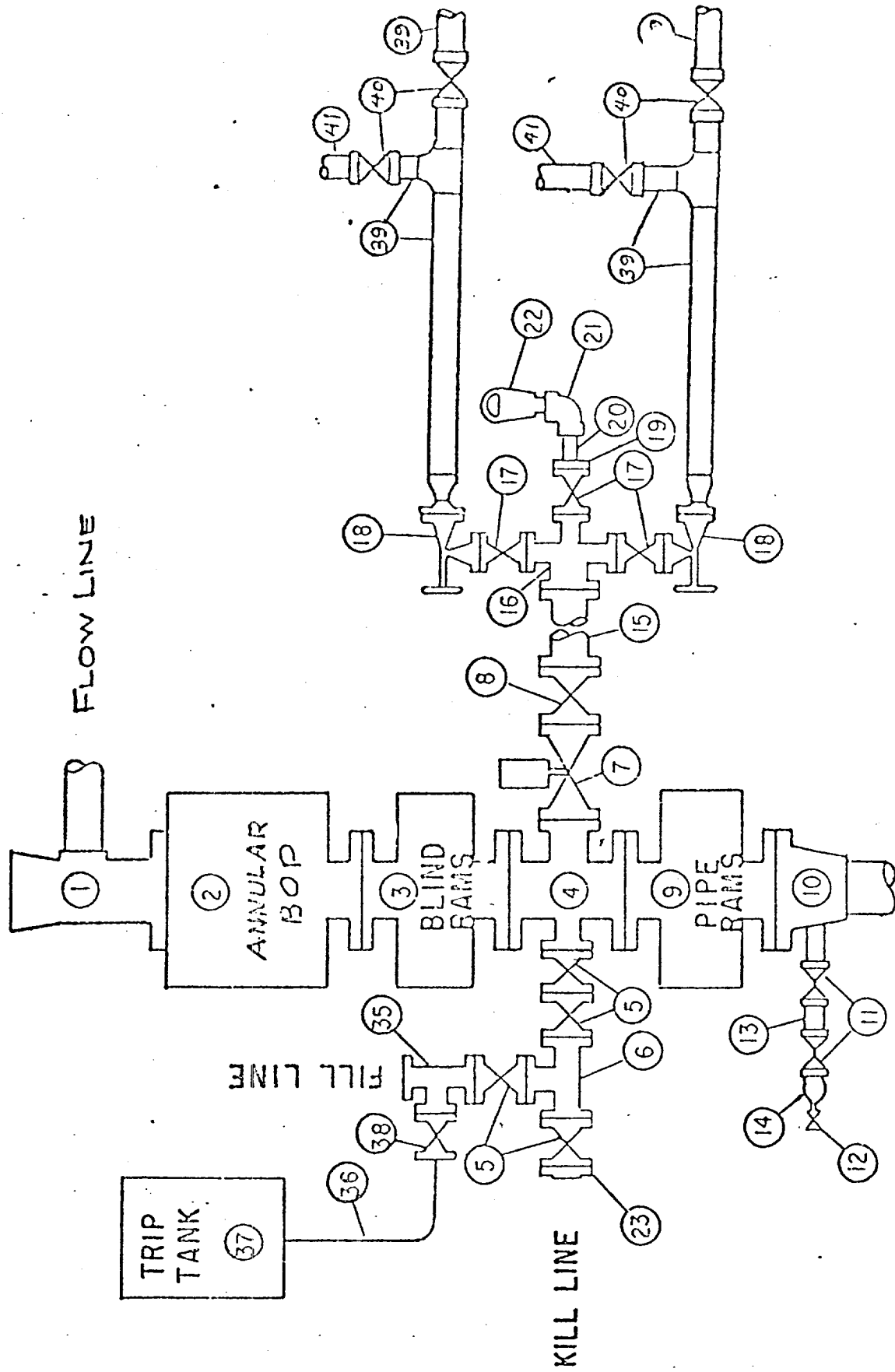
All equipment should be at least 2000 psi WP or higher unless otherwise specified.

1. Bell nipple.
2. Hydril or Shaffer bag type preventer.
3. Ram type pressure operated blowout preventer with blind rams.
4. Flanged spool with one 4-inch and one 2-inch (minimum) outlet.
5. 2-inch (minimum) flanged plug or gate valve.
6. 2-inch by 2-inch by 2-inch (minimum) flanged tee.
7. 4-inch pressure operated gate valve.
8. 4-inch flanged gate or plug valve.
9. Ram type pressure operated blowout preventer with pipe rams.
10. Flanged type casing head with one side outlet (furnished by Exxon).
11. 2-inch threaded (or flanged) plug or gate valve (furnished by Exxon).  
Flanged on 5000# WP, threaded on 3000# WP or less.
12. Needle valve (furnished by Exxon).
13. 2-inch nipple (furnished by Exxon).
14. Tapped bull plug (furnished by Exxon).
15. 4-inch flanged spacer spool.
16. 4-inch by 2-inch by 2-inch by 2-inch flanged cross.
17. 2-inch flanged plug or gate valve.
18. 2-inch flanged adjustable choke.
19. 2-inch threaded flange.
20. 2-inch XNH nipple.
21. 2-inch forged steel 90° Ell.
22. Cameron (or equal.) threaded pressure gage.
23. Threaded flange.
35. 2-inch flanged tee.
36. 3-inch (minimum) hose. (Furnished by Exxon).
37. Trip tank. (Furnished by Exxon).
38. 2-inch flanged plug or gate valve.
39. 2-1/2-inch pipe, 300' to pit, anchored.
40. 2-1/2-inch SE valve.
41. 2-1/2-inch line to steel pit or separator.

NOTES:

1. Items 3, 4 and 9 may be replaced with double ram type preventer with side outlets between the rams.
2. The two valves next to the stack on the fill and kill line to be closed unless drill string is being pulled.
3. Kill line is for emergency use only. This connection shall not be used for filling.
4. Replacement pipe rams and blind rams shall be on location at all times.
5. Only type U, LWS and QRC ram type preventers with secondary seals are acceptable for 5000 psi WP and higher BOP stacks.
6. Type E ram-type BOP's with factory modified side outlets may be used on 3000 psi or lower WP BOP stacks.

# MIDLAND DRILLING AND MINING BLOWOUT PREVENTER SPECIFICATION TYPE II - C



9/15/73