

State of New Mexico
Energy, Minerals and Natural Resources Department

Form C-102
Revised 1-1-89

Submit to appropriate
District Office
State Lease-4 copies
Fee Lease-3 copies

OIL CONSERVATION DIVISION

DISTRICT I
P.O. Box 1980, Hobbs, NM 88240

P.O. Box 2088
Santa Fe, New Mexico 87504-2088

DISTRICT II
P.O. Drawer DD, Artesia, NM 88210

DISTRICT III
1000 Rio Brazos Rd., Aztec, NM 87410

WELL LOCATION AND ACREAGE DEDICATION PLAT

All distances must be from the outer boundaries of the Section.

Operator Exxon Corporation			Lease NEW MEXICO STATE "S"		Well No. 31
Unit Letter H	Section 2	Township 22/S	Range 37/E	County LEA	
Actual Footage Location of Well: 1660 feet from the NORTH line and 810 feet from the EAST line.					
Ground level Elev. —	Producing Formation BLINEBRY	Pool BLINEBRY (PRO GAS)(CONSOLIDATED)			Dedicated Acreage: 80 Acres

- Outline the acreage dedicated to the subject well by colored pencil or hatchure marks on the plat below.
- If more than one lease is dedicated to the well, outline each and identify the ownership thereof (both as to working interest and royalty).
- If more than one lease of different ownership is dedicated to the well, have the interest of all owners been consolidated by communitization, unitization, force-pooling, etc.?

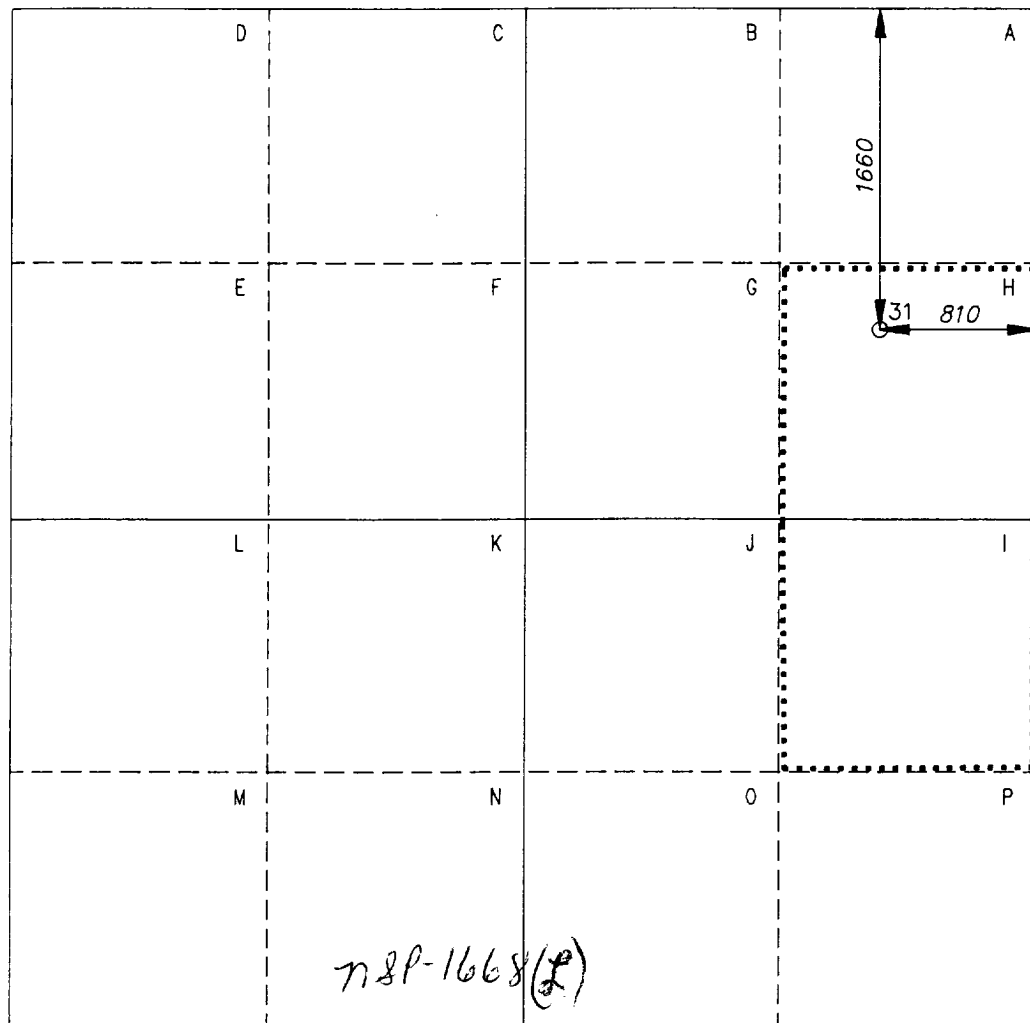
☐ Yes

☐ No

If answer is "yes", type of consolidation _____

If answer is "no", list the owners and tract descriptions which have actually been consolidated. (Use reverse side of this form if necessary.) _____

No allowable will be assigned to the well until all interests have been consolidated (by communitization, unitization, forced-pooling, or otherwise) or until a non-standard unit, eliminating such interest, has been approved by the Division.



OPERATOR CERTIFICATION

I hereby certify that the information contained herein is true and complete to the best of my knowledge and belief.

Signature

C. H. Harper

Printed Name

C.H. HARPER

Position

PERMITS SUPERVISOR

Company Exxon Corporation

P.O. Box 1600-Midland, Tx.-79702

Date

3-23-93

SURVEYOR CERTIFICATION

I hereby certify that the well location shown on this plat was plotted from field notes of actual surveys made by me or under my supervision, and that the same is true and correct to the best of my knowledge and belief.

Date Surveyed

6/17/76

Signature & Seal of
Professional Surveyor

Certificate No.

1.6 Miles SE of EUNICE, New Mexico.

C.E. File No. A01839 d

RECEIVED

MAR 26 1997

GOV HOBBS OFFICE

[illegible]

F.R. 5-24-76
(Drinkard & Granite Wash)
6-21-76 AMEND PROPOSED DEPTH & ZONE: Formerly reported as
7300' RT; (Drinkard & Abo)
6-24-76 TD 4534'; Lost Circ
6-28-76 Drlg 5005'
6-28-76 TD 5198'; Drlg by @ 3677'
Spotted Cmt Plug 3832-3332'
Sidetracked @ 3332'
7-12-76 TD 6408'; Stuck
7-12-76 Drlg 6740'
7-26-76 TD 7200'; WOC

10-1-19 NM

LEA
HXXON CORP.

Drinkard & Wanta
31 New Mexico "S" State
Sec 2, T22S, R37E

NM
Page #2

8-7-76 ID 7697'; Rng Logs
8-14-76 ID 7697'; Prep Acid
8-16-76 ID 7697'; PBD 7140'; Prep Test
Acid (7200-7697') 5000 gals
PBD to 7140'
Perf (Abc) 6848-6959' w/37 shots (v. 1-11)
Perf (Drinkard) 6333-64' w/18 shots (v. 1-11)
Acid (6848-6959') 13,000 gals
Acid (6333-64') 18,500 gals
8-21-76 ID 7697'; PBD 7140'; Testg
8-20-76 ID 7697'; PBD 7140'; Testg
Flwd 780 MCPCFD + 4 BLO + 1 ELW in 24 hrs thru
20/64" chk, CP 325#, IP 300# (6333-64') 10-1-19 NM
Flwd 29 BO in 24 hrs thru 1/4" chk, IP 300#

8-30-76 continued
(6848-6959')
9-3-76 ID 7697'; PBD 7140'; WOPI
Flwd 16 BO in 24 hrs thru 16/64" chk, IP 300#
(6848-6959')
9-27-76 ID 7697'; PBD 7140'; Complete
LOC TOPS: Grayburg 3696', San Andres 3880',
Glorieta 5064', Blinberry 5484', Tubb 5969',
Drinkard 6320', Abc 6557'
FOCS RUN: CNDL, CALP, FDC, DIAL
BRI 112 deg
10-1-76 COMPLETION ISSUED

10-1-19 NM
IC 30-025-70 9-1-76