

NO. OF COPIES FILED	
DISTRIBUTION	
SANTA FE	
FILE	
U.S.G.S.	
LAND OFFICE	
OPERATOR	

NEW MEXICO OIL CONSERVATION COMMISSION

Form O-161
Revised 11-65

5A. A. Home Type of Lease	STATE <input type="checkbox"/>	FEE <input checked="" type="checkbox"/>
5. State Oil & Gas Lease No.		

APPLICATION FOR PERMIT TO DRILL, DEEPEN, OR PLUG BACK

1a. Type of Work				7. Unit Agreement Name	
b. Type of Well OIL WELL <input checked="" type="checkbox"/> GAS WELL <input type="checkbox"/> OTHER <input type="checkbox"/>				8. Form or Lease Name	
c. Name of Operator				9. Well No.	
Mobil Oil Corporation				S. E. Long	
3. Address of Operator				10. Field and Pool, or Wildcat	
P. O. Box 633, Midland, Texas 79701				Wantz-Granite Wash	
4. Location of Well				11. County	
UNIT LETTER J LOCATED 1780 FEET FROM THE South LINE				Lea	
AND 1980 FEET FROM THE East LINE OF SEC. 11 TAP. 22S S. 37E NADEN					
12. Proposed Depth		13. Formation		20. Rotary or C.T.	
7350		Granite Wash		Rotary	
21A. Kind & Status Plug. Bond		21B. Drilling Control		22. Approx. Date Work will start	
3351 - Ground		On File		Unknown	
				As soon as possible	

23.

PROPOSED CASING AND CEMENT PROGRAM

SIZE OF HOLE	SIZE OF CASING	WEIGHT PER FOOT	SETTING DEPTH	SACKS OF CEMENT	EST. TOP
11	8-5/8"	28# H-40	0 - 1200	Circulate	Surface
7-7/8	4-1/2"	11.6# K-55	0 - 7350	Circulate	Surface

Blowout Preventer Program:

Csno. String	Count Size & API Series	No. & Type	Test Pressure PSI
Surface	8" 900	Hydril, Dual with Blank & Pipe Rams	2000

IN ABOVE SPACE DESCRIBE PROPOSED PROGRAM; IF PROPOSAL IS TO DEEPEN OR PLUG BACK, GIVE DATA ON PRESENT PRODUCTIVE ZONE AND PROPOSED NEW PRODUCTIVE ZONE. GIVE BLOWOUT PREVENTER PROGRAM, IF ANY.

I hereby certify that the information above is true and complete to the best of my knowledge and belief.

Signed A. D. Bond A. D. Bond Title Regulatory Eng. Coordinator Date August 11, 1976

(This space for State Use)

APPROVED BY Jerry S. Lohr TITLE Secretary DATE August 11, 1976

CONDITIONS OF APPROVAL, IF ANY:

NEW MEXICO OIL CONSERVATION COMMISSION
WELL LOCATION AND ACREAGE DEDICATION PLAT

Form C-102
Supersedes C-128
Effective 1-1-63

All distances must be from the outer boundaries of the Section.

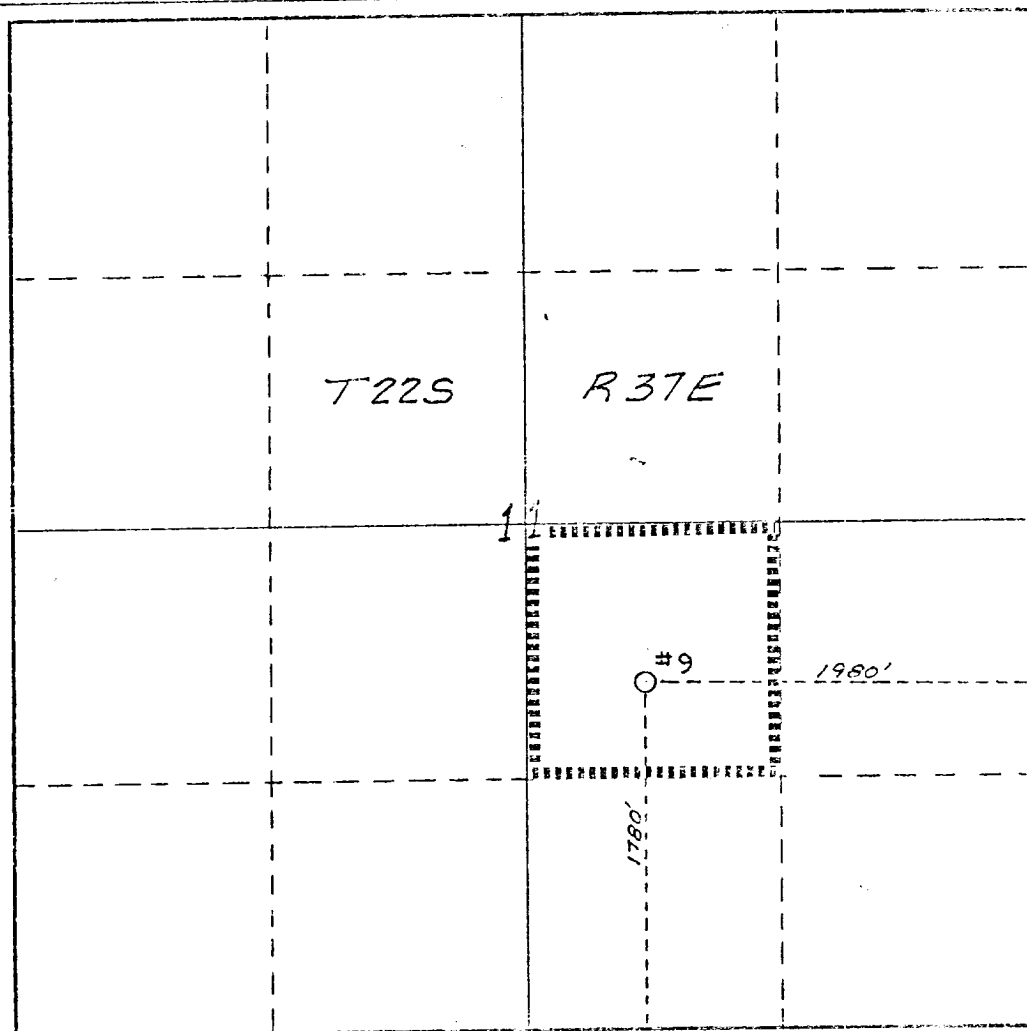
Lessee Mobil Oil Corporation			Lease S. E. Long		Well No. 9
Unit Letter J	Section 11	Township 22	Range 37E	County Lea	
Actual True Location of Well: 1780 feet from the South line and 1980 feet from the East line					
Ground Elevation 3351	Underlying Formation Granite Wash	Pool Wante-Granite Wash		Dedicated Acreage: 40 Acres	

1. Outline the acreage dedicated to the subject well by colored pencil or hatchure marks on the plat below.
2. If more than one lease is dedicated to the well, outline each and identify the ownership thereof (both as to working interest and royalty).
3. If more than one lease of different ownership is dedicated to the well, have the interests of all owners been consolidated by communitization, unitization, force-pooling, etc?

☐ Yes ☐ No If answer is "yes," type of consolidation _____

If answer is "no," list the owners and tract descriptions which have actually been consolidated. (Use reverse side of this form if necessary.) _____

No allowable will be assigned to the well until all interests have been consolidated (by communitization, unitization, forced-pooling, or otherwise) or until a non-standard unit, eliminating such interests, has been approved by the Commission.



CERTIFICATION

I hereby certify that the information contained herein is true and complete to the best of my knowledge and belief.

A. D. Bond
Name
A. D. Bond
Position
Regulatory Eng. Coordinator
Company
Mobil Oil Corporation
Date
August 11, 1976

I hereby certify that the well location shown on this plat was plotted from field notes of actual surveys made by me or under my supervision, and that the same is true and correct to the best of my knowledge and belief.

Wilson D. Watson, Jr.
Date Surveyed
July 30, 1976
Registered Professional Engineer
and/or Land Surveyor
NEW MEXICO
WILSON D. WATSON, JR.
Certificate No.
3959

0 330 660 990 1320 1650 1980 2310 2640 2970 3300 3630 3960 4290 4620 4950 5280 5610 5940 6270 6600

RECEIVED

JUN 10 1976

OIL CONSERVATION COMM.
10025 H. M.

13