

NO. OF COPIES RECEIVED	
DISTRIBUTION	
SANTA FE	
FILE	
U.S.G.S.	
LAND OFFICE	
OPERATOR	

# NEW MEXICO OIL CONSERVATION COMMISSION

Form C-101  
Revised 1-1-65

5A. Indicate Type of Lease  
STATE ☐ FEE ☒

5. State Oil & Gas Lease No.

## APPLICATION FOR PERMIT TO DRILL, DEEPEN, OR PLUG BACK

1a. Type of Work b. Type of Well OIL WELL <input checked="" type="checkbox"/> GAS WELL <input type="checkbox"/> OTHER <input type="checkbox"/> SINGLE ZONE <input checked="" type="checkbox"/> MULTIPLE ZONE <input type="checkbox"/>		7. Unit Agreement Name
2. Name of Operator Gulf Oil Corporation		8. Farm or Lease Name Lee Stebbins (NCT-A)
3. Address of Operator Box 670, Hobbs, New Mexico 88240		9. Well No. 4
4. Location of Well UNIT LETTER E LOCATED 1830 FEET FROM THE North LINE AND 660 FEET FROM THE West LINE OF SEC. 5 TWP. 22-S RGE. 37-E NMPM		10. Field and Pool, or Wildcat Drinkard
12. County Lea		
19. Proposed Depth 6800'		19A. Formation Drinkard
20. Rotary or C.T. Rotary		
21. Elevations (Show whether DF, RT, etc.)	21A. Kind & Status Plug. Bond Blanket	21B. Drilling Contractor
22. Approx. Date Work will start October 15, 1976		

## PROPOSED CASING AND CEMENT PROGRAM

SIZE OF HOLE	SIZE OF CASING	WEIGHT PER FOOT	SETTING DEPTH	SACKS OF CEMENT	EST. TOP.
12-1/4"	8-5/8"	24#	1210'	Circulate	
7-7/8"	5-1/2"	15.5#	6800'*	Circulate	

\* Will set DV tool at approximately 4000' and circulate cement.

BOP: See Drawing No. 3 attached.

IN ABOVE SPACE DESCRIBE PROPOSED PROGRAM: IF PROPOSAL IS TO DEEPEN OR PLUG BACK, GIVE DATA ON PRESENT PRODUCTIVE ZONE AND PROPOSED NEW PRODUCTIVE ZONE. GIVE BLOWOUT PREVENTER PROGRAM, IF ANY.

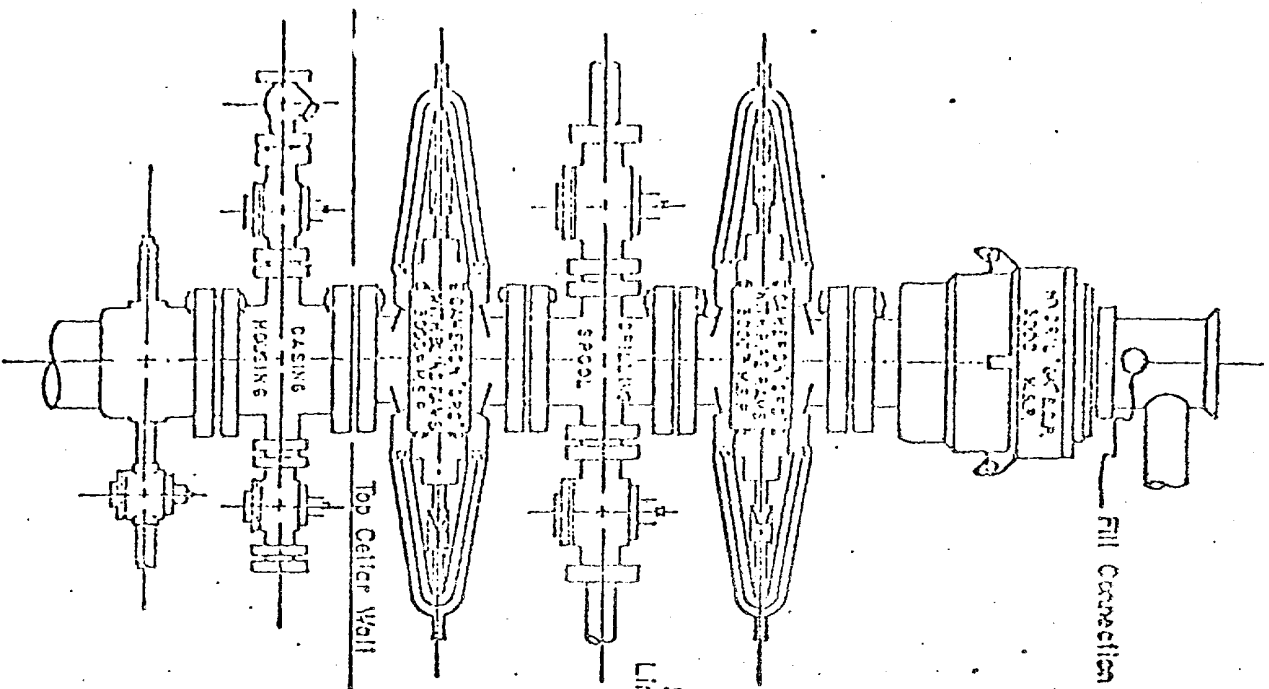
I hereby certify that the information above is true and complete to the best of my knowledge and belief.

Signed W. B. Berland Title Area Engineer Date September 29, 1976

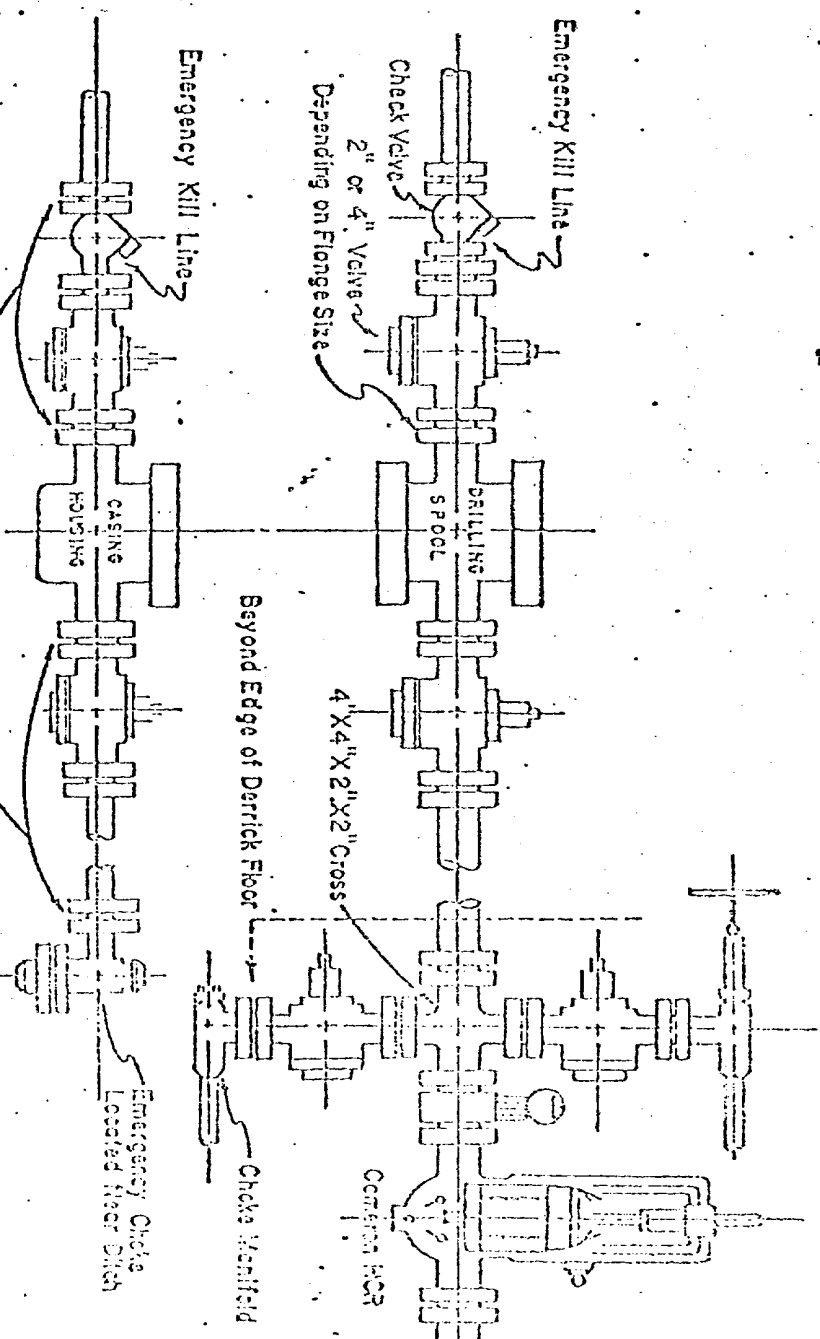
(This space for State Use)

APPROVED BY [Signature] TITLE DISTRICT DATE OCT 1 1976

CONDITIONS OF APPROVAL, IF ANY:



See Detail of 4" Flow Line and Choke Assembly



### 3,000 PSI WORKING PRESSURE KILL, CHOKE, AND FILL CONNECTIONS

API Series 900 Flanges or Better

#### DETAIL OF 4" FLOW LINE CHOKE ASSEMBLY

Minimum assembly for 3000 PSI working pressure will consist of three preventers. The bottom and middle preventer ORC, Cameron Type F single or Shafter Hydraulic single, and the upper will be Hydril GK. In line of the drilling spool, the flow line and the two-inch kill line.

Size 12-inch preventers may be used for work down through 8-5/8-inch casing. Size 10-inch preventers may be used through 7-5/8-inch casing. Size six-inch preventers are to be used for work through 7-inch and 5-1/2-inch casings.

Minimum operating equipment for the preventers will be: (1) An air operated pump and (2) An accumulator(s) with a fluid charge. A closed fluid system is recommended. The closing manifold and remote closing manifold will have a valve for each pressure operated device and a Hydril regulator will be provided. Sufficient fluid capacity in the remote

able to close all the pressure operated devices of the same time with 25 percent reserve. Guffness Hydraulic oil shall be used as the

The four-inch flow line from the preventers shall be supported by a metal stand or reinforced concrete. All valves in assembly shall be selected for operation in both gas and fluids.

The ram type preventers and the Cameron HCR valve will be provided with stem extensions, universal joints, operating wheels.

### 3,000 PSI WORKING PRESSURE BLOWOUT PREVENTER HOOK-UP

Series 900 Flanges, or Better

NEW MEXICO OIL CONSERVATION COMMISSION  
WELL LOCATION AND ACREAGE DEDICATION PL

Form C-102  
Supersedes C-128  
Effective 1-1-65

All distances must be from the outer boundaries of the Section

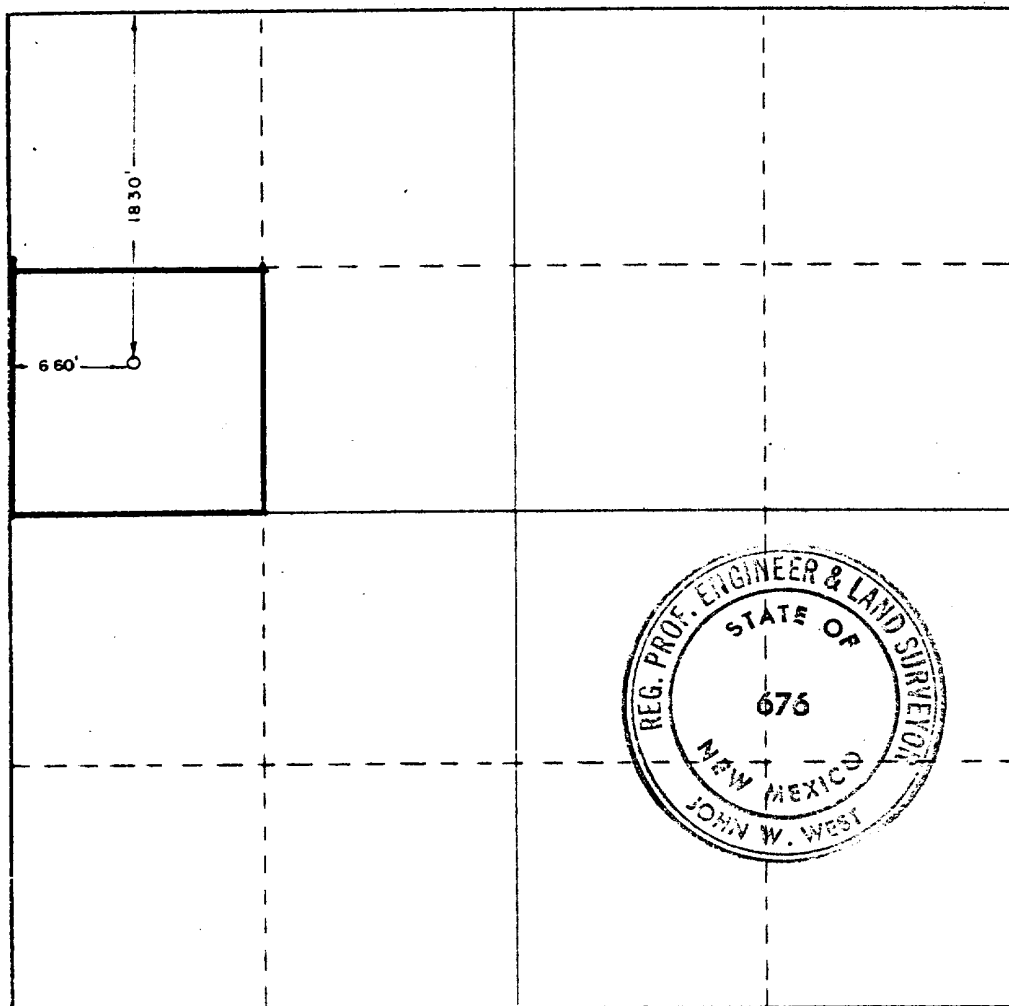
Operator <b>GULF OIL CORP.</b>		Lease <b>Lea Stebbins NCT "A"</b>		Well No. <b>4</b>
Unit Letter <b>E</b>	Section <b>5</b>	Township <b>22 South</b>	Range <b>37 East</b>	County <b>Lea</b>
Actual Footage Location of Well: <b>1830</b> feet from the <b>north</b> line and <b>660</b> feet from the <b>west</b> line				
Ground Level Elev.	Producing Formation <b>Drinkard</b>	Pool <b>Drinkard</b>	Dedicated Acreage: <b>40</b> Acres	

- Outline the acreage dedicated to the subject well by colored pencil or hatchure marks on the plat below.
- If more than one lease is dedicated to the well, outline each and identify the ownership thereof (both as to working interest and royalty).
- If more than one lease of different ownership is dedicated to the well, have the interests of all owners been consolidated by communitization, unitization, force-pooling, etc?

☐ Yes ☐ No If answer is "yes," type of consolidation \_\_\_\_\_

If answer is "no," list the owners and tract descriptions which have actually been consolidated. (Use reverse side of this form if necessary.) \_\_\_\_\_

No allowable will be assigned to the well until all interests have been consolidated (by communitization, unitization, forced-pooling, or otherwise) or until a non-standard unit, eliminating such interests, has been approved by the Commission.



CERTIFICATION

I hereby certify that the information contained herein is true and complete to the best of my knowledge and belief.

*C. D. Borland*

Name

**C. D. BORLAND**

Position

**Area Production Manager**

Company

**Gulf Oil Corporation**

Date

**September 29, 1976**

I hereby certify that the well location shown on this plat was plotted from field notes of actual surveys made by me or under my supervision, and that the same is true and correct to the best of my knowledge and belief.

Date Surveyed

**Sept. 27, 1976**

Registered Professional Engineer and/or Land Surveyor

*John W. West*

Certificate No.

**676**

330 660 990 1320 1650 1980 2310 2640 2000 1500 1000 500