

NO. OF COPIES RECEIVED	
DISTRIBUTION	
SANTA FE	
FILE	
U.S.G.S.	
LAND OFFICE	
OPERATOR	

NEW MEXICO OIL CONSERVATION COMMISSION

Form C-101
Revised 1-4-65

5A. Indicate Type of Lease
STATE ☐ FEE ☒

5. State Oil & Gas Lease No.

APPLICATION FOR PERMIT TO DRILL, DEEPEN, OR PLUG BACK

1a. Type of Work		7. Unit Agreement Name	
b. Type of Well OIL WELL <input checked="" type="checkbox"/> GAS WELL <input type="checkbox"/> OTHER <input type="checkbox"/>		8. Farm or Lease Name A. M. Drinkard	
2. Name of Operator Summit Energy, Inc.		9. Well No. 2	
3. Address of Operator 112 North First St., Artesia, New Mexico 88210		10. Field and Pool, or Wildcat Wantz Granite Wash	
4. Location of Well UNIT LETTER I LOCATED 2310 FEET FROM THE South LINE AND 990' FEET FROM THE East LINE OF SEC. 30 TWP. 22 S RGE. 38 E NMPM		12. County Lea	
19. Proposed Depth 7600		19A. Formation Granite Wash	
20. Rotary or C.T. Rotary		21. Elevations (Show whether DF, RT, etc.) 3368.9 GR	
21A. Kind & Status Plug. Bond Blanket		21B. Drilling Contractor Moranco	
22. Approx. Date Work will start February 1, 1977			

PROPOSED CASING AND CEMENT PROGRAM

SIZE OF HOLE	SIZE OF CASING	WEIGHT PER FOOT	SETTING DEPTH	SACKS OF CEMENT	EST. TOP
12 1/4	8 5/8	24	1200	550	Circ. to Surface
7 7/8	5 1/2	15.5	7600	800	Base of 8 5/8

The 5 1/2" o.d. casing will be set and cement will be placed behind the 5 1/2" to tie-in to the base of the 8 5/8 casing. Proper blow out preventer will be installed, Blind rams and proper pipe rams will be checked every 24 hours, using hydraulic and manual closure and opening.

April 27, 1977

IN ABOVE SPACE DESCRIBE PROPOSED PROGRAM: IF PROPOSAL IS TO DEEPEN OR PLUG BACK, GIVE DATA ON PRESENT PRODUCTIVE ZONE AND PROPOSED NEW PRODUCTIVE ZONE. GIVE BLOWOUT PREVENTER PROGRAM, IF ANY.

I hereby certify that the information above is true and complete to the best of my knowledge and belief.

Signed Sam White Title Vice President-Production Date January 25, 1977

(This space for State Use)

APPROVED BY Sam W. Hunsan TITLE UAC 27 10 DATE

CONDITIONS OF APPROVAL, IF ANY:

RECEIVED

JAN 29 1977

OIL CONSERVATION COMM.
HOBBS, N. M.

**NEW MEXICO OIL CONSERVATION COMMISSION
WELL LOCATION AND ACREAGE DEDICATION PLAT**

Form C-102
Supersedes C-128
Effective 1-1-65

All distances must be from the outer boundaries of the Section

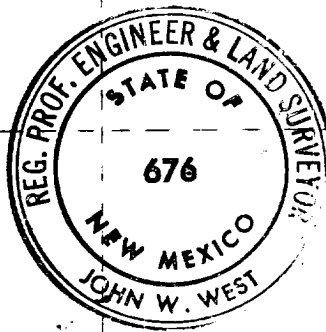
Operator SUMMIT ENERGY, INC.			Lease A. M. Drinkard		Well No. 2
Unit Letter I	Section 30	Township 22 South	Range 38 East	County Lea	
Actual Footage Location of Well: <div style="display: flex; justify-content: space-between; align-items: center;"> 2310 feet from the south line and 990 feet from the east line </div>					
Ground Level Elev. 3368.9	Producing Formation GRANITE WASH	Pool WANTZ GRANITE WASH	Dedicated Acreage 40 Acres		

1. Outline the acreage dedicated to the subject well by colored pencil or hatchure marks on the plat below.
2. If more than one lease is dedicated to the well, outline each and identify the ownership thereof (both as to working interest and royalty).
3. If more than one lease of different ownership is dedicated to the well, have the interests of all owners been consolidated by communitization, unitization, force-pooling, etc?

☐ Yes ☐ No If answer is "yes," type of consolidation _____

If answer is "no," list the owners and tract descriptions which have actually been consolidated. (Use reverse side of this form if necessary.) _____

No allowable will be assigned to the well until all interests have been consolidated (by communitization, unitization, forced-pooling, or otherwise) or until a non-standard unit, eliminating such interests, has been approved by the Commission.



CERTIFICATION

I hereby certify that the information contained herein is true and complete to the best of my knowledge and belief

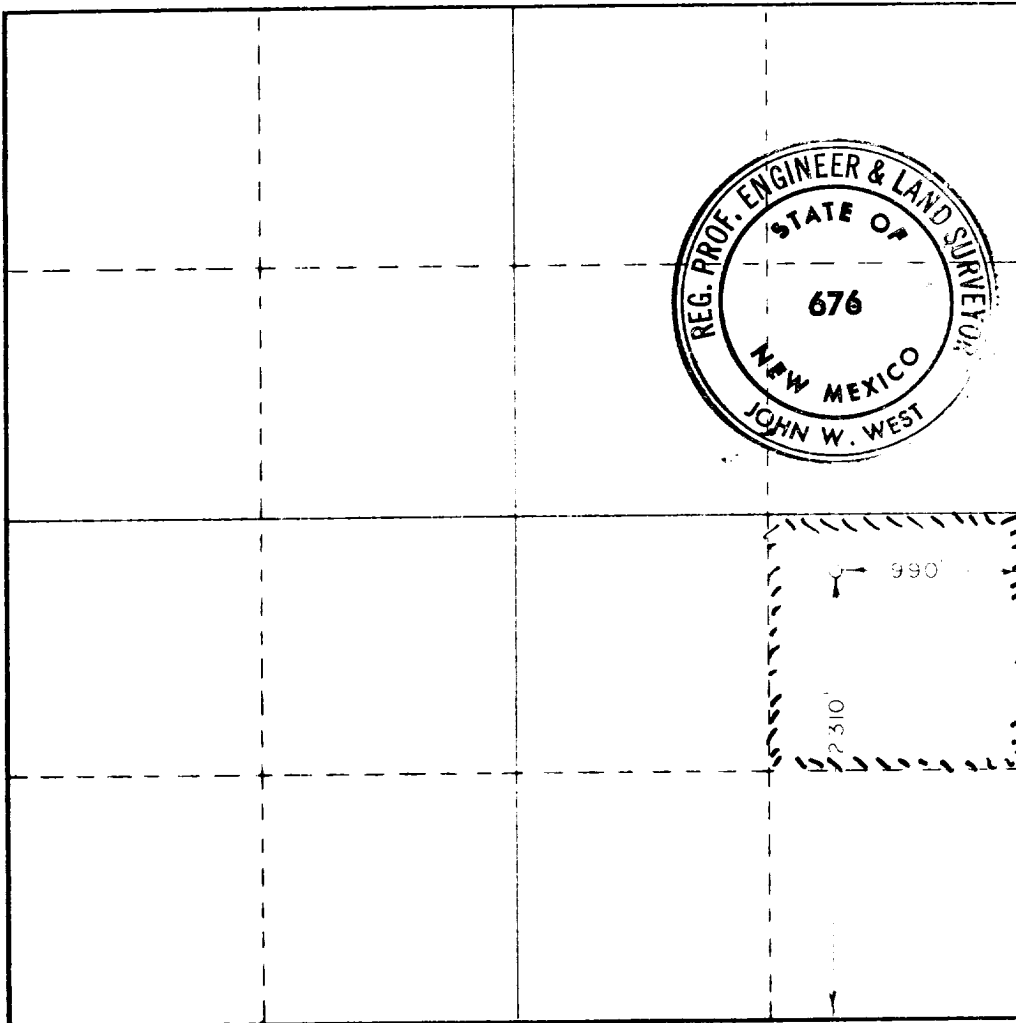
Paul G. White

Name
Paul G. White
 Position
Vice President-Production
 Company
Summit Energy, Inc.
 Date
January 25, 1977

I hereby certify that the well location shown on this plat was plotted from field notes of actual surveys made by me or under my supervision, and that the same is true and correct to the best of my knowledge and belief.

Date Surveyed
Jan. 20, 1977
 Registered Professional Engineer
and/or Land Surveyor

John W. West
 Certificate No. **676**



0 330 660 990 1320 1650 1980 2310 2640 2970 3300 3630 3960 4290 4620 4950 5280 5610 5940 6270 6600

RECEIVED
JAN 26 1972
OIL CONSERVATION COMM.
HOBBS, N. M.