

NO. OF COPIES RECEIVED		
DISTRIBUTION		
SANTA FE		
FILE		
U.S.G.S.		
LAND OFFICE		
OPERATOR		

# NEW MEXICO OIL CONSERVATION COMMISSION

Form C-101  
Revised 1-1-65

5A. Indicate Type of Lease STATE <input checked="" type="checkbox"/> FEE <input type="checkbox"/>
5. State Oil & Gas Lease No. B-934
7. Unit Agreement Name
8. Farm or Lease Name New Mexico "S" State
9. Well No. 37
10. Field and Pool, or Wildcat Wantz Abo and Wantz-Granite Wash
12. County Lea
19. Proposed Depth 7,800
19A. Formation Abo & Granite Wash Rotary
20. Rotary or C.T.
21. Elevations (Show whether DF, RT, etc.) To be filed later
21A. Kind & Status Plug. Bond Blanket on file
21B. Drilling Contractor Unknown
22. Approx. Date Work will start March 7, 1977

## APPLICATION FOR PERMIT TO DRILL, DEEPEN, OR PLUG BACK

1a. Type of Work b. Type of Well OIL WELL <input checked="" type="checkbox"/> GAS WELL <input type="checkbox"/> OTHER <input type="checkbox"/> 2. Name of Operator EXXON CORPORATION 3. Address of Operator P. O. BOX 1600, MIDLAND, TEXAS 79701 4. Location of Well UNIT LETTER C LOCATED 330 FEET FROM THE North LINE AND 1,980 FEET FROM THE West LINE OF SEC. 2 TWP. 22S RGE. 37E NMPM	DEEPEEN <input type="checkbox"/> PLUG BACK <input type="checkbox"/> SINGLE ZONE <input type="checkbox"/> MULTIPLE ZONE <input checked="" type="checkbox"/>
23. PROPOSED CASING AND CEMENT PROGRAM	

SIZE OF HOLE	SIZE OF CASING	WEIGHT PER FOOT	SETTING DEPTH	SACKS OF CEMENT	EST. TOP
12-1/4" or 13-3/4"	9-5/8"	36#	1,200'	700	Circ to Surface
8-3/4"	7"	20, 23 & 26#	7,800'	1,740	1,200*

\*Circulate back into surface casing @ 1,200' to protect from corrosive water.

Howco method of cementing to be used. A diagrammatic sketch and specifications of Blowout Preventer equipment is attached.

Mud Program: 0 - 1,200' Fresh Water or Spud Mud  
1,200 - 6,000' 10# Brine Water Mud  
6,000 - T.D. 10.0 - 10.2# Brine Water Mud

APPROVAL VALID  
FOR 90 DAYS UNLESS  
DRILLING COMMENCED,

EXPIRES 5-7-77

IN ABOVE SPACE DESCRIBE PROPOSED PROGRAM: IF PROPOSAL IS TO DEEPEEN OR PLUG BACK, GIVE DATA ON PRESENT PRODUCTIVE ZONE AND PROPOSED NEW PRODUCTIVE ZONE. GIVE BLOWOUT PREVENTER PROGRAM, IF ANY.

I hereby certify that the information above is true and complete to the best of my knowledge and belief.

Signed Frederick Knippling Title Proration Specialist Date 2-2-77

(This space for State Use)

SUPERVISOR DISTRICT

APPROVED BY [Signature] TITLE [Signature] DATE 2-2-77

CONDITIONS OF APPROVAL, IF ANY:

RECEIVED

12 1977

12 1977

Federal Lse. No. \_\_\_\_\_ All distances must be from the outer boundaries of the Section.

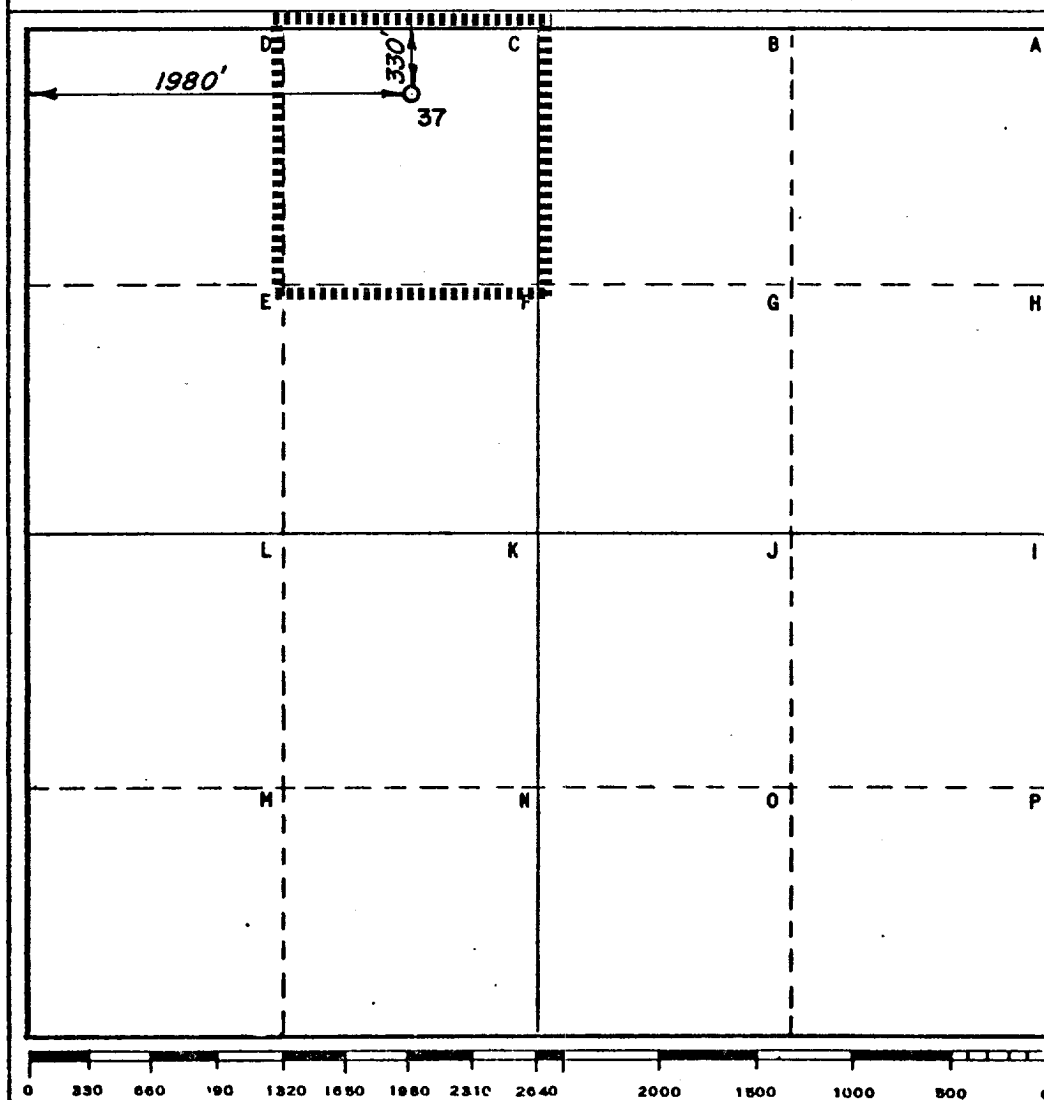
Operator <b>Exxon Corporation</b>			Lease <b>New Mexico "S" State</b>		Well No. <b>37</b>
Unit Letter <b>C</b>	Section <b>2</b>	Township <b>22 South</b>	Range <b>37 East</b>	County <b>Lea</b>	
Actual Footage Location of Well: <b>330</b> feet from the <b>North</b> line and <b>1980</b> feet from the <b>West</b> line					
Ground Level Elev.:	Producing Formation <b>Granite Wash &amp; Abo</b>	Pool <b>Wantz-Granite Wash &amp; Wantz Abo</b>		Dedicated Acreage: <b>39.76 40</b> Acres	

1. Outline the acreage dedicated to the subject well by colored pencil or hachure marks on the plat below.
2. If more than one lease is dedicated to the well, outline each and identify the ownership thereof (both as to working interest and royalty).
3. If more than one lease of different ownership is dedicated to the well, have the interests of all owners been consolidated by communitization, unitization, force-pooling, etc?

☐ Yes ☐ No If answer is "yes," type of consolidation \_\_\_\_\_

If answer is "no," list the owners and tract descriptions which have actually been consolidated. (Use reverse side of this form if necessary.) \_\_\_\_\_

No allowable will be assigned to the well until all interests have been consolidated (by communitization, unitization, forced-pooling, or otherwise) or until a non-standard unit, eliminating such interests, has been approved by the Commission.



#### CERTIFICATION

I hereby certify that the information contained herein is true and complete to the best of my knowledge and belief.

Name  
*Melba Knipling*

Position  
*Proration Specialist*

Company **Exxon Corporation**  
**Box 1600 Midland, Texas**

Date  
**2-2-77**

I hereby certify that the well location shown on this plat was plotted from field notes of actual surveys made by me or under my supervision, and that the same is true and correct to the best of my knowledge and belief.

Date Surveyed  
**2-1-77**

Registered Professional Engineer and/or Land Surveyor  
*H. L. Minterfield*

Certificate No.  
**1382**

RECEIVED

11/17

11/17/11

BLOWOUT PREVENTER SPECIFICATION  
EQUIPMENT DESCRIPTION

TYPE II-C

All equipment should be at least 2000 psi WP or higher unless otherwise specified.

1. Bell nipple.
2. Hydril or Shaffer bag type preventer.
3. Ram type pressure operated blowout preventer with blind rams.
4. Flanged spool with one 4-inch and one 2-inch (minimum) outlet.
5. 2-inch (minimum) flanged plug or gate valve.
6. 2-inch by 2-inch by 2-inch (minimum) flanged tee.
7. 4-inch pressure operated gate valve.
8. 4-inch flanged gate or plug valve.
9. Ram type pressure operated blowout preventer with pipe rams.
10. Flanged type casing head with one side outlet (furnished by Exxon).
11. 2-inch threaded (or flanged) plug or gate valve (furnished by Exxon).  
Flanged on 5000# WP, threaded on 3000# WP or less.
12. Needle valve (furnished by Exxon).
13. 2-inch nipple (furnished by Exxon).
14. Tapped bull plug (furnished by Exxon).
15. 4-inch flanged spacer spool.
16. 4-inch by 2-inch by 2-inch by 2-inch flanged cross.
17. 2-inch flanged plug or gate valve.
18. 2-inch flanged adjustable choke.
19. 2-inch threaded flange.
20. 2-inch XXH nipple.
21. 2-inch forged steel 90° Ell.
22. Cameron (or equal.) threaded pressure gage.
23. Threaded flange.
35. 2-inch flanged tee.
36. 3-inch (minimum) hose. (Furnished by Exxon).
37. Trip tank. (Furnished by Exxon).
38. 2-inch flanged plug or gate valve.
39. 2-1/2-inch pipe, 300' to pit, anchored.
40. 2-1/2-inch SE valve.
41. 2-1/2-inch line to steel pit or separator.

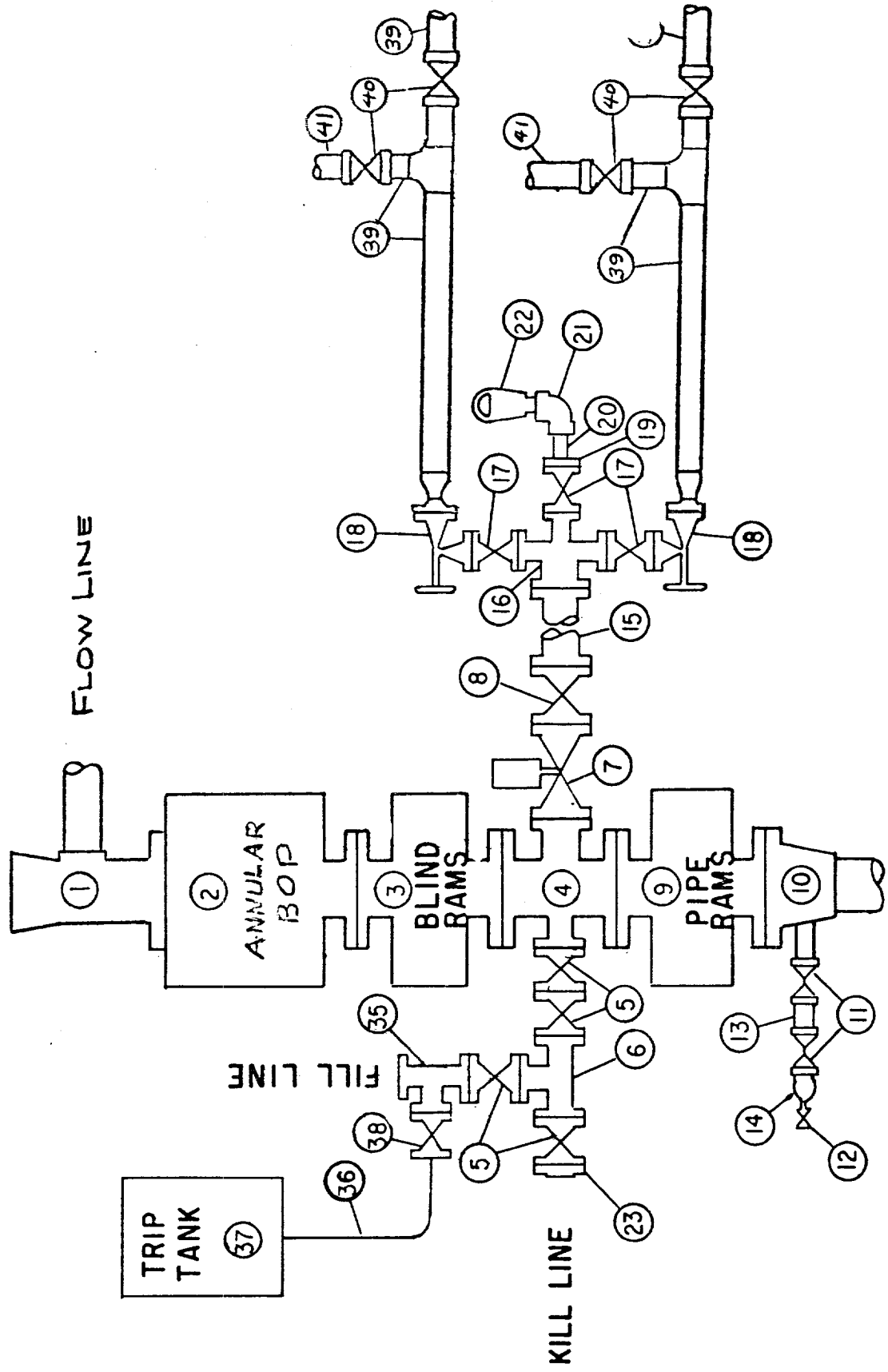
NOTES:

1. Items 3, 4 and 9 may be replaced with double ram type preventer with side outlets between the rams.
2. The two valves next to the stack on the fill and kill line to be closed unless drill string is being pulled.
3. Kill line is for emergency use only. This connection shall not be used for filling.
4. Replacement pipe rams and blind rams shall be on location at all times.
5. Only type U, LWS and QRC ram type preventers with secondary seals are acceptable for 5000 psi WP and higher BOP stacks.
6. Type E ram-type BOP's with factory modified side outlets may be used on 3000 psi or lower WP BOP stacks.

RECEIVED

10/17

# MIDLAND DRILLING ORGANIZATION BLOWOUT PREVENTER SPECIFICATION TYPE II - C



RECEIVED

17