

All distances must be from the outer boundaries of the Section.

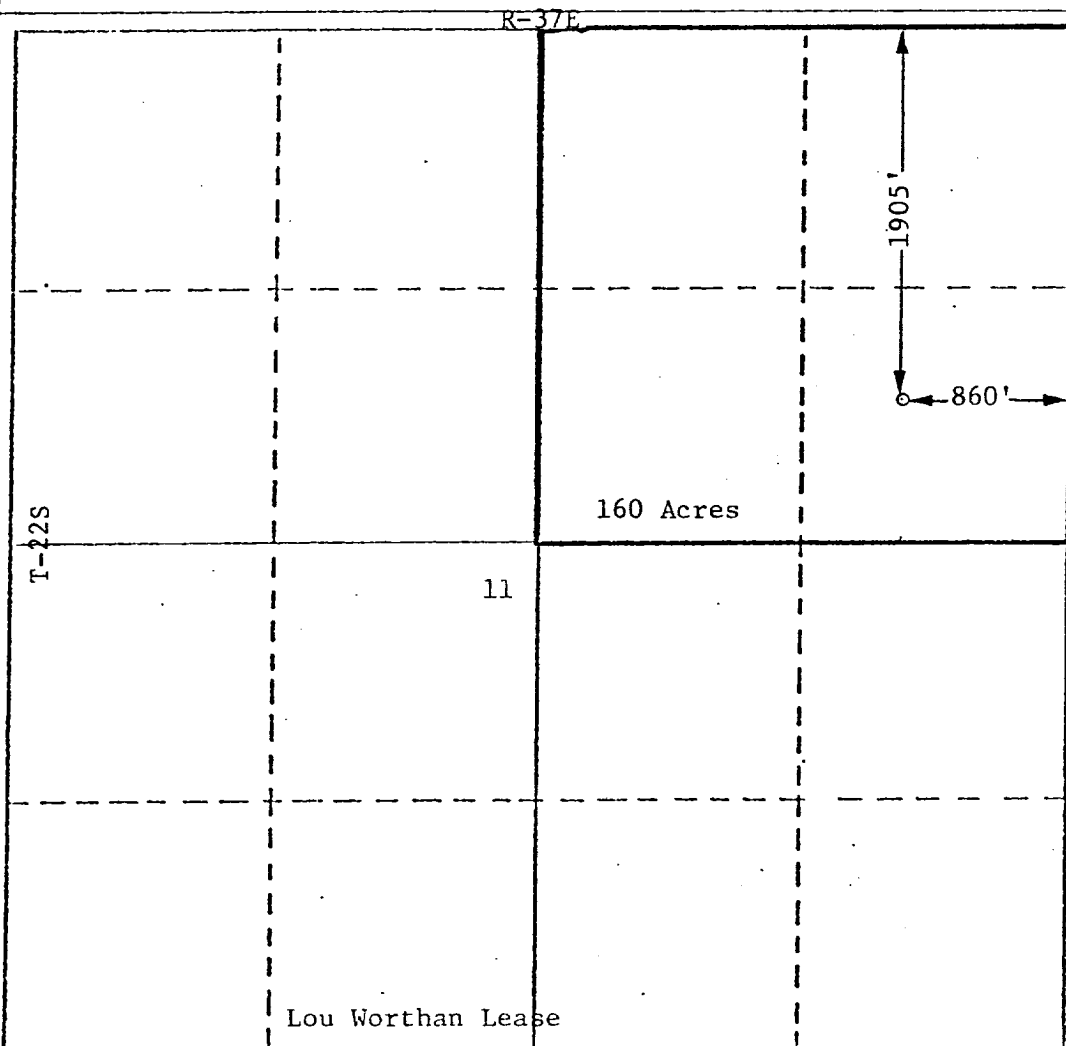
Operator Marathon Oil Company			Lease Lou Worthan			Well No. 18		
Unit Letter H	Section 11	Township 22S	Range 37E	County Lea				
Actual Footage Location of Well:								
1905 feet from the North line and		860 feet from the East line						
Ground Level Elev. 3353'	Producing Formation Tubb Gas		Pool Tubb Gas			Dedicated Acreage: 160 Acres		

1. Outline the acreage dedicated to the subject well by colored pencil or hatchure marks on the plat below.
2. If more than one lease is dedicated to the well, outline each and identify the ownership thereof (both as to working interest and royalty).
3. If more than one lease of different ownership is dedicated to the well, have the interests of all owners been consolidated by communitization, unitization, force-pooling, etc?

☐ Yes ☐ No If answer is "yes," type of consolidation _____

If answer is "no," list the owners and tract descriptions which have actually been consolidated. (Use reverse side of this form if necessary.) _____

No allowable will be assigned to the well until all interests have been consolidated (by communitization, unitization, forced-pooling, or otherwise) or until a non-standard unit, eliminating such interests, has been approved by the Division.



CERTIFICATION

I hereby certify that the information contained herein is true and complete to the best of my knowledge and belief.

Patrick Burton

Name
Patrick N. Burton
Position
Production Engineer
Company
Marathon Oil Company
Date
August 21, 1980

I hereby certify that the well location shown on this plat was plotted from field notes of actual surveys made by me or under my supervision, and that the same is true and correct to the best of my knowledge and belief.

Date Surveyed
Registered Professional Engineer
and/or Lead Surveyor

Certificate No.

