

UNITED STATES
DEPARTMENT OF THE INTERIOR
GEOLOGICAL SURVEY

APPLICATION FOR PERMIT TO DRILL, DEEPEN, OR PLUG BACK

1a. TYPE OF WORK

DRILL ☒DEEPEN ☐PLUG BACK ☐

b. TYPE OF WELL

OIL
WELL ☒GAS
WELL ☐

OTHER

SINGLE
ZONE ☒MULTIPLE
ZONE ☐

2. NAME OF OPERATOR

Continental Oil Company

3. ADDRESS OF OPERATOR

Box 460, Hobbs N.M. 88240

4. LOCATION OF WELL (Report location clearly and in accordance with any State requirements.)

At surface

2600' FSL + 1230' FWL of Sec. 19, T-23S, R-33E

At proposed prod. zone

"Same"

14. DISTANCE IN MILES AND DIRECTION FROM NEAREST TOWN OR POST OFFICE*

15. DISTANCE FROM PROPOSED*

LOCATION TO NEAREST
PROPERTY OR LEASE LINE, FT.
(Also to nearest drg. unit line, if any)18. DISTANCE FROM PROPOSED LOCATION*
TO NEAREST WELL, DRILLING, COMPLETED,
OR APPLIED FOR, ON THIS LEASE, FT.

21. ELEVATIONS (Show whether DF, RT, GR, etc.)

3695' GR

16. NO. OF ACRES IN LEASE

640

19. PROPOSED DEPTH

5300'

17. NO. OF ACRES ASSIGNED
TO THIS WELL

40

20. ROTARY OR CABLE TOOLS

Rotary

22. APPROX. DATE WORK WILL START*

September 21, 1977

5. LEASE DESIGNATION AND SERIAL NO.

LC 068848

6. IF INDIAN, ALLOTTEE OR TRIBE NAME

7. UNIT AGREEMENT NAME

8. FARM OR LEASE NAME

MARSHALL

9. WELL NO.

8

10. FIELD AND POOL, OR WILDCAT

Cruz Delaware

11. SEC., T., R., M., OR BLM.
AND SURVEY OR AREA

Sec 19, T-23S, R-33E

12. COUNTY OR PARISH

LEA

N.M.

23. PROPOSED CASING AND CEMENTING PROGRAM

SIZE OF HOLE	SIZE OF CASING	WEIGHT PER FOOT	SETTING DEPTH	QUANTITY OF CEMENT
12 1/4"	8 5/8"	28 #	1260'	650 Sx Class C
7 7/8"	5 1/2"	14 #	5300'	400 Sx Class C

It is proposed to drill a straight hole to a TD of 5300' and complete as a Ramsey Sand. Delaware Oil Well. Unless Drilling Operations have Commenced, this drilling approval Expires 12-1-77

Mud program: 0-1260' 8.5#-9.0# Spud Mud
1260'-5300' 9.0#-10.0# Salt Gel

See attached for BOP program, formation tops, logging etc.

IN ABOVE SPACE DESCRIBE PROPOSED PROGRAM: If proposal is to deepen or plug back, give data on present productive zone and proposed new productive zone. If proposal is to drill or deepen directionally, give pertinent data on subsurface locations and measured and true vertical depths. Give blowout preventer program, if any.

24.

SIGNED

Ben A. Lu

TITLE

Administration Supervisor

DATE

Aug. 8, 1977

(This space for Federal or State office use)

PERMIT NO.

SEE ATTACHED FOR
CONDITIONS OF APPROVAL

APPROVAL DATE

APPROVED BY

TITLE

CONDITIONS OF APPROVAL, IF ANY:

NSL 5502

*See Instructions On Reverse Side

APPROVED
AS AMENDED
SEP 1 1977
ARTHUR R. BROWN
DISTRICT ENGINEER

USGS (6) File (2)

RECEIVED

SEP - 1977

OIL CONSERVATION COMM.
HOBBS, N. M.

NEW MEXICO OIL CONSERVATION COMMISSION
WELL LOCATION AND ACREAGE DEDICATION PL

All distances must be from the outer boundaries of the Section

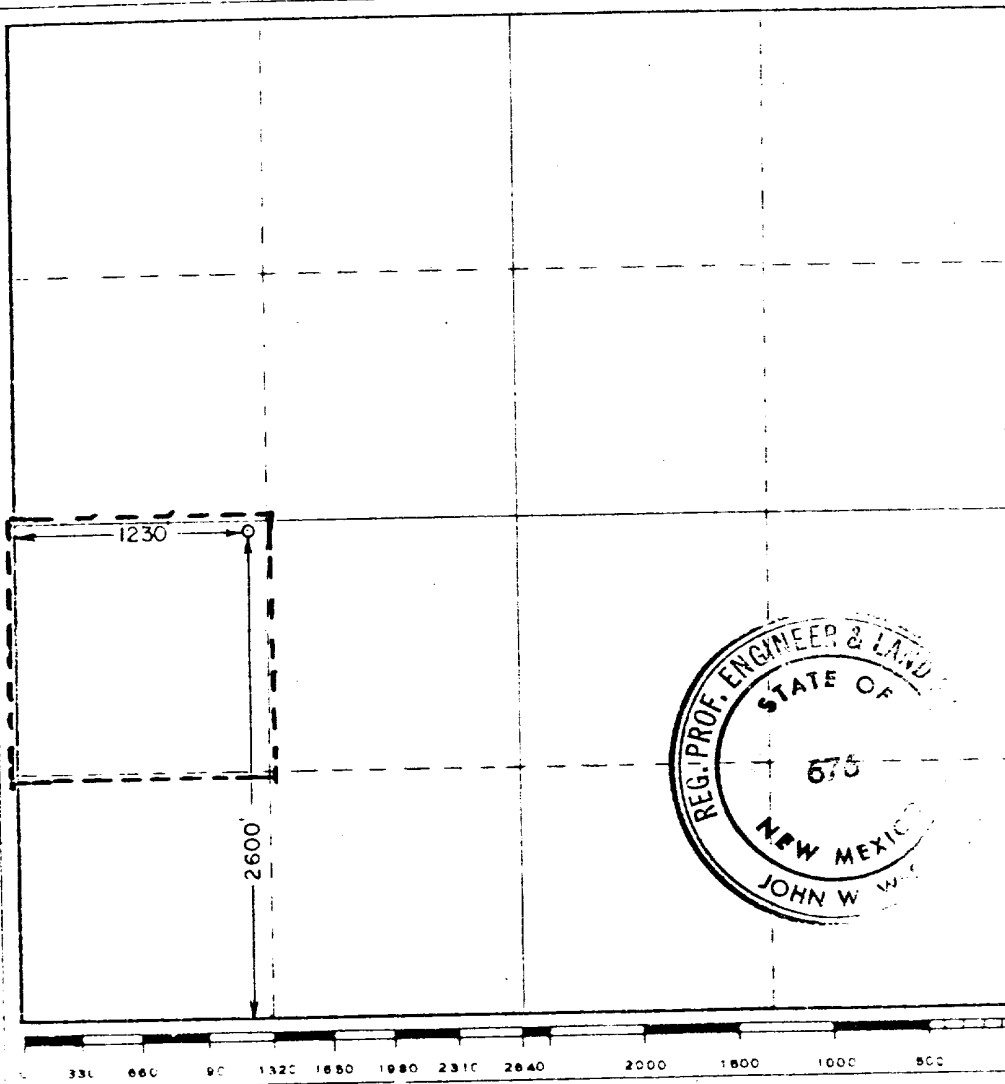
Continental Oil Co.		Lease Marshall		8
L	19	23 South	33 East	Lea
2600		South	1230	West
3695.5	Romsey Sand	Cruz Delaware	40 21 90	

1. Outline the acreage dedicated to the subject well by colored pencil or hatchure marks on the plat being used.
2. If more than one lease is dedicated to the well, outline each and identify the ownership thereat (including interest and royalty).
3. If more than one lease of different ownership is dedicated to the well, have the interests of a few been consolidated by communitization, unitization, force-pooling, etc?

Yes ☐ No ☐ If answer is "yes" type of consolidation _____

If answer is "no" list the owners and tract descriptions which have actually been consolidated on this form if necessary _____

No allowable will be assigned to the well until all interests have been consolidated (by communitization, unitization, force-pooling, or otherwise) or until a non-standard unit, eliminating such interests, has been approved by the Commission.



I hereby certify that the information furnished herein is true and correct to the best of my knowledge and belief.

Ben H. Lee
Administrative Supervisor

Continental Oil Co.
8-8-77

I hereby certify that the information shown on this plat was obtained from notes of actual surveys made under my supervision and that the same is true and correct to the best of my knowledge and belief.

Date Surveyed June 18, 1977

Registered Professional Engineer
Civil and Mechanical

John W. West

675

RECEIVED

SEP - 1977

OIL CONSERVATION COMM.
HOBBS, N. M.

Attachment to Form 9-331 C
Application for Permit to Drill

Continental Oil Company, Marshall No. 8
2600' FSL and 1230' FWL of Section 19, T-23S, R-33E
Lea County, New Mexico

1. The geologic name of the surface formation is Quaternary Sand.
2. The estimated tops of important geologic markers are shown on the attached Proposed Well Plan.
3. The estimated depths at which anticipated water, oil, gas or other mineral-bearing formations are expected to be encountered are as follows:

Water SS	500'-700'
Rustler Anhy.	1220'
Salado Salt	1300'
Base Cowder Salt	4770'
Lamar IS	5030'
Ramsey SS	5090'
Olds SS	5190'

4. The proposed casing program is as follows:

Surface - new 8 5/8" 28# H-40 ST&C set at 1260'
Production - new 5 1/2" 14# K-55 ST&C set at 5300'

5. A drawing of an API Series 900 Blowout Preventer Specification is attached. Pipe rams and blinds will be checked to 1000 PSI for 30 minutes when BOP is installed. BOP will be checked when casing string is set and operated daily for checks.

6. The proposed mud program is as follows:

0'-1260' 8.5-9.0 pounds per gallon
1260'-5300' 9.0-10.0 pounds per gallon

7. The auxiliary equipment to be used is:

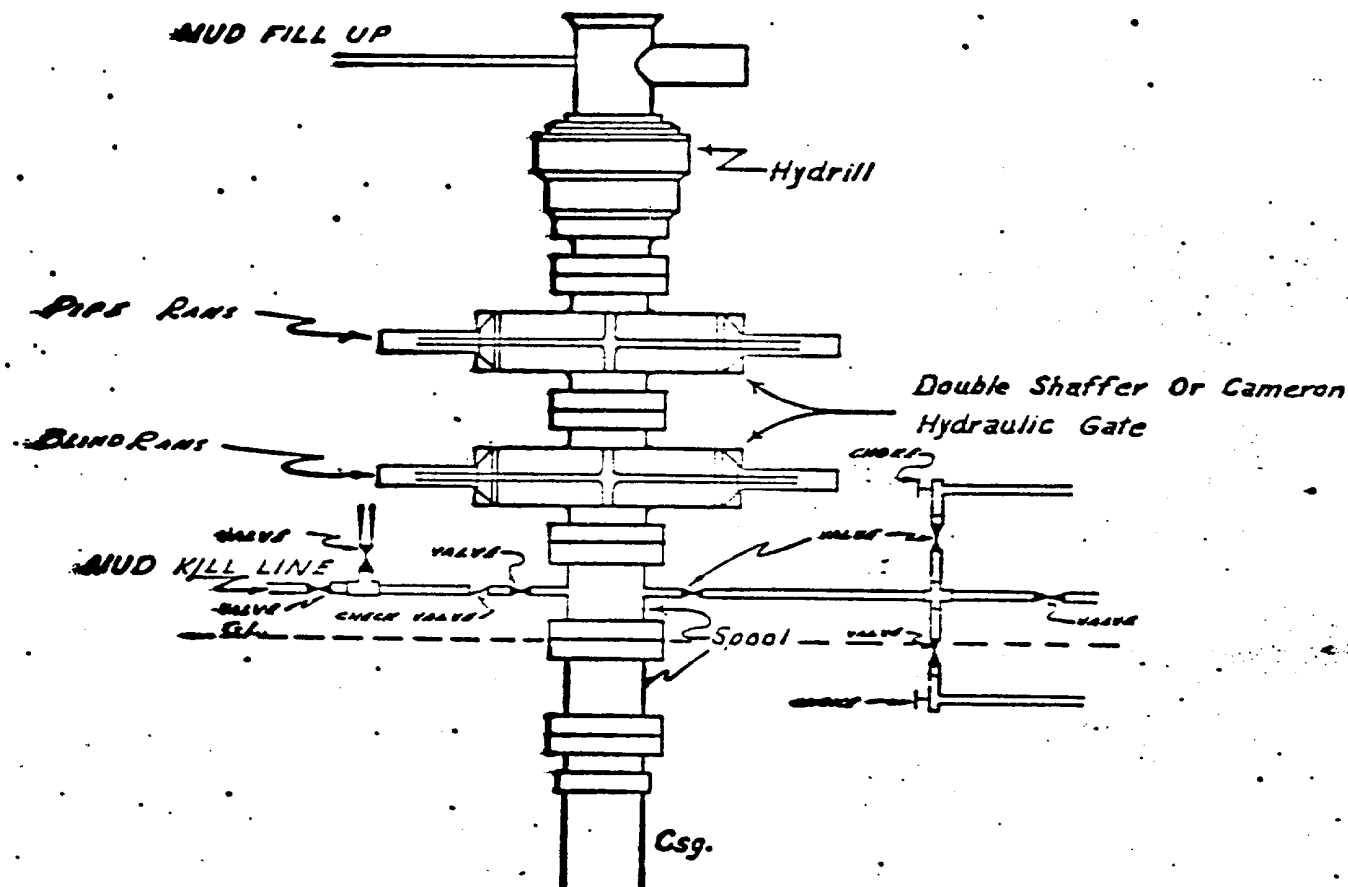
- (1) kelly cocks
- (2) floats at the bit

8. It is proposed to run the following logs:

GR-BHC Sonic	4700' - TD
DLL	4700' - TD
Temp	0' - 4500'
GR	4700' - TD
Geolograph	0' - TD

9. No abnormal pressures or temperatures are expected to be encountered in this well.
10. The anticipated starting date for this well is September 21, with a duration of approximately 14 days.

CONTINENTAL OIL COMPANY
Blow-out Preventer Specifications



API Series 900

NOTE:

Manual and Hydraulic controls with closing unit no less than 75' from well head.
 Rezero controls on rig floor.

DUE TO SUBSTRUCTURE CLEARANCE, HYDRILL MAY OR MAY NOT BE USED.

Lea, N.M.

COUNTY AND STATE

LOCATION: 2600' ESL & 1230' FWL Sec. 1, T23S, R33W ELEVATION:

PTH.	FORMATION TOPS & TYPES	DRILLING PROBLEMS	TYPE OF FORMATION EVALUATION	HOLES SIZE (IN)	CASING		FRACTURE GRADIENT (PPG)	FORMATION PRESSURE GRADIENT (PPG)	MUD	
					SIZE (IN)	DEPTH (FT)			WEIGHT (PPG)	TYPE (PPG)
	QUATERNARY									
	WATER SS. 500-700									
1	RUSTLER ANHY, 1220 SALADO SALT 1300			12-1/4	8-5/8	1260	-	-	8.5- 9.0	FRESH WATER
2										
3										
4			2" & 5" GR-BHC SONIC DLL 4700-TD							SALT GEL
5	BASE COWDEN SALT 4770 LAMAR IS. 5030 RAMSEY SS 5090 OLDS SS. 5190 TD 5300			7-7/8	5-1/2	5300	12.0- 12.5	LESS THAN 8.5	9.0- 10.0	

District Engineer
U. S. Geological Survey

Gentlemen:

RE: MARSHALL No. 8

This refers to the Form 9-331C, Application to Drill, Deepen or Plugback accompanying this letter. The undersigned hereby states that he has personally contacted W.H. Brinnestool, the owner of the surface land where the proposed work is to be conducted and advised him of the proposed work, the construction site and pertinent roads included in the project. It is further stated that, upon being fully advised of the extent of the work and the effect upon the surface, said owner has consented to the said work and that agreement as to the compensation for damages to the surface estate has been reached.

It has been agreed, subject to change at that time, that upon abandonment of operations the roads shall be (ripped ~~or left intact~~) and the pad shall be (ripped ~~or left intact~~).

D.A. Lawers

STATE OF NEW MEXICO
COUNTY OF LEA

Subscribed and sworn to before me this 10th day of June, 1977

U. M. Hoover
Notary Public

My commission expires 2-20-81

SURFACE USE PLAN
Continental Oil Company, Marshall No. 8
2600' FSL and 1230' FWL of Section 19, T-23S, R-33E
Lease LC-068848, Lea County, NM

This plan is to accompany "Application for Permit to Drill" the subject well which is located approximately 30.2 miles southwest of Eunice, New Mexico. The following is a discussion of pertinent information concerning possible effects which the proposed drilling may have on the surrounding environment. A copy will be posted on the derrick floor so that all contractors and sub-contractors will be aware of all items of this plan.

1. Existing Roads

- A. The proposed well site is 2600' FSL and 1230' FWL of Section 19, T-23S, R-33E, Lea County, New Mexico.
- B. Exhibit "A" is a portion of a New Mexico road map showing the existing black top road and the dirt road to the location. Directions to the location (outlined in red and black on Exhibit "A") from Eunice, New Mexico are as follows: From the Conoco service station in Eunice travel south 2.5 miles on Loop 18 then turn west onto the Delaware Basin road and follow it for 28 miles. (This is a black top road which runs west for approximately 7 miles, then south approximately 4 miles, then west approximately 12 miles then south approximately 5 miles). At this point turn west on a caliche road and travel approximately 6 miles then turn back south and go approximately .5 mile. The location will be on the east side of the road some 330' from the road.
- C,D,E. The access roads are shown on Exhibits "B" and "C".
- F. No improvement or maintenance is anticipated for the existing roads.

2. Planned Access Roads

- A. Width and Length: New road required will be 12' wide and 330' long. This new road is labeled and color coded on Exhibits "B" and "C".
- B. Turnouts: None
- C. Drainage Design: New road will have a drop of 6" from center line on each side.
- D. Culverts, Cuts and Fills: None required.
- E. Surfacing Material: Six inches of caliche; bladed, watered and compacted.
- F. Gates, Cattleguards, Fences: Existing - Fence and cattleguard .5 mile north and .5 mile southwest.
New - None required.

G. The proposed road is staked.

3. Location of Existing Wells

See Exhibit "C"

4. Location of Existing and/or Proposed Facilities

- A. Tank Batteries: The existing tank battery lies .5 mile southwest of the proposed well in the SW/4 of Section 19 and located on Exhibit "C".
- B. Producing Facilities: No additional producing facilities are required.
- C. Oil Gathering Lines: The flowline will lay (not buried) approximately 2330' southwest to the existing battery in SW/4 of Section 19. See Exhibit "C".
- D. Other Lines: Phillips gas line lies .5 mile southwest of battery. Conoco disposal line lies .5 mile southwest of battery. No additional lines will be required.
- E. Rehabilitation: Pits will be backfilled and leveled as soon as practical to original condition. Commencement of rehabilitation operations will immediately follow removal of drilling and completion equipment from location and rehabilitation of the surface is planned to be completed within 45 days from commencement.

5. Water Supply

The supply of water will be hauled from a water well located approximately 1400' southwest of the proposed well.

6. Source of Construction Materials

- A. Caliche for surfacing the new road and the well pad will be obtained from an existing pit in the SW/4 SW/4 Section 18, T-23S, R-33E as shown on Exhibit "C".
- B. Caliche to be purchased from W. H. Brinnestool.
- C. The caliche will be hauled from the pit. From the pit travel .6 mile south and the location lies 330' distant on the east side of the road.

7. Methods for Handling Waste Disposal

Waste Disposal: Well cuttings will be disposed of in a reserve pit. Barrel trash containers to be in accessible locations within drill site area during drilling and completion procedures. All detrimental

waste will be hauled away, burned or buried with a minimum cover of 24" of dirt. See Exhibit "D" for location of pits. If well is productive, maintenance waste will be placed in special trash cans and hauled away periodically. Any produced water will be collected in tanks until hauled to an approved disposal system, or separate disposal applications will be submitted to the survey for appropriate approval.

8. Ancillary Facilities

None

9. Well Site Layout

Exhibit "D" shows the relative location and dimensions of the well pad, mud pit, reserve pit, trash barrel, etc. The reserve pit will be lined with plastic. The pad and pits are staked.

10. Plans for Restoration of Surface

Pits will be backfilled and leveled as soon as practical to original condition. Commencement of rehabilitation operations will immediately follow removal of drilling and completion equipment from location and rehabilitation of the surface is planned to be completed within 45 days from commencement.

11. Other Information

- A. Terrain: Flat sandy land. See Exhibit "B", topographic map of area.
- B. Soil: Sandy
- C. Vegetation: Grass and shinnery, sparse.
- D. Surface Use: Grazing
- E. Ponds and Streams: None within one mile
- F. Water Wells: 1400' southwest of location
- G. Residences and Building: None within one mile
- H. Arroyos, Canyons, Etc.: There are no significant surface features, see attached Exhibit "B".
- I. Well Sign: Sign identifying and locating well will be maintained at drill site with the spudding of the well.
- J. Open Pits: All pits containing mud or other liquids will be fenced.
- K. Archaeological Resources: None observed

12. Operator's Representative

Field personnel who can be contacted concerning compliance of this Surface Use Plan are as follows:

Production and Drilling
C. R. Paschal or D. A. Sowers
1001 North Turner
Hobbs, New Mexico 88240

Phone: 393-4141

13. Certification

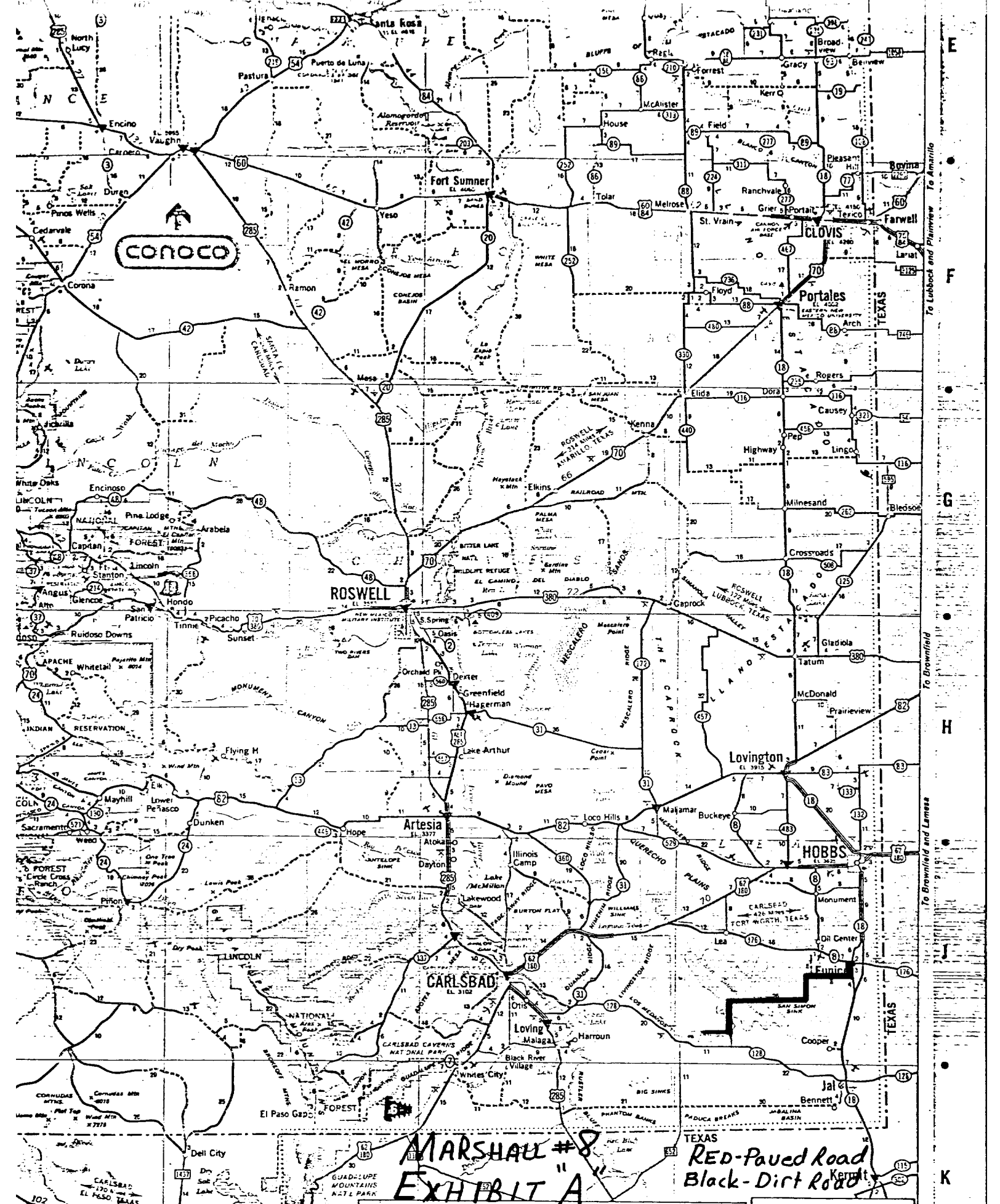
I hereby certify that I, or persons under my direct supervision, have inspected the proposed drill site and access route; that I am familiar with the conditions which presently exist; that the statements made in this plan are, to the best of my knowledge, true and correct; and that the work associated with the operations proposed herein will be performed by Continental Oil Company and its contractors and sub-contractors in conformity with this plan and the terms and conditions under which it is approved.

6-30-77

Date

D. A. Sowers

D. A. Sowers
Production Superintendent



~~MARSHALL #8~~
~~EXHIBIT A~~

LOCATIONS WHERE CONOCO PRODUCTS ARE SOLD

- ▼ Locations on Interstate Highways, toll roads or major limited access highways where CONOCO PRODUCTS are sold.



- Locations where COA/COO DEALERS provide Trailer Travelers with Sanitary Disposal Facilities. Look for this sign:



TOURAIDE ATTRACTIONS



HISTORICAL



SCENIC



GENERAL

Attraction as this described
on reverse side

[illegible]

How to read your map





NEW MEXICO

SCALE OF MILES

0 5 10 20 30 40

ONE INCH EQUALS APPROXIMATELY 21.6 MILES

HIGHWAY MARKERS

INTERSTATE  UNITED STATES  STATE  TEXAS FARM OR RANCH 

ROAD CLASSIFICATIONS

CONTROLLED ACCESS DIVIDED HIGHWAYS
Interstate interchange numbers are indicated.

OTHER DIVIDED HIGHWAYS

MILEAGES

MILEAGE BETWEEN TOWNS
AND JUNCTIONS

MILEAGE BETWEEN DOTS 35

LONG DISTANCE MILEAGES SHOWN IN RED

SPECIAL FEATURES

STATE PARKS
With Composites ▲ Without Composites ▲

MILITARY AIRPORTS
OTHER AIRPORTS

RECREATION AREAS

TOURIST INFORMATION

PORTS OF ENTRY

SELECTED REST AREAS

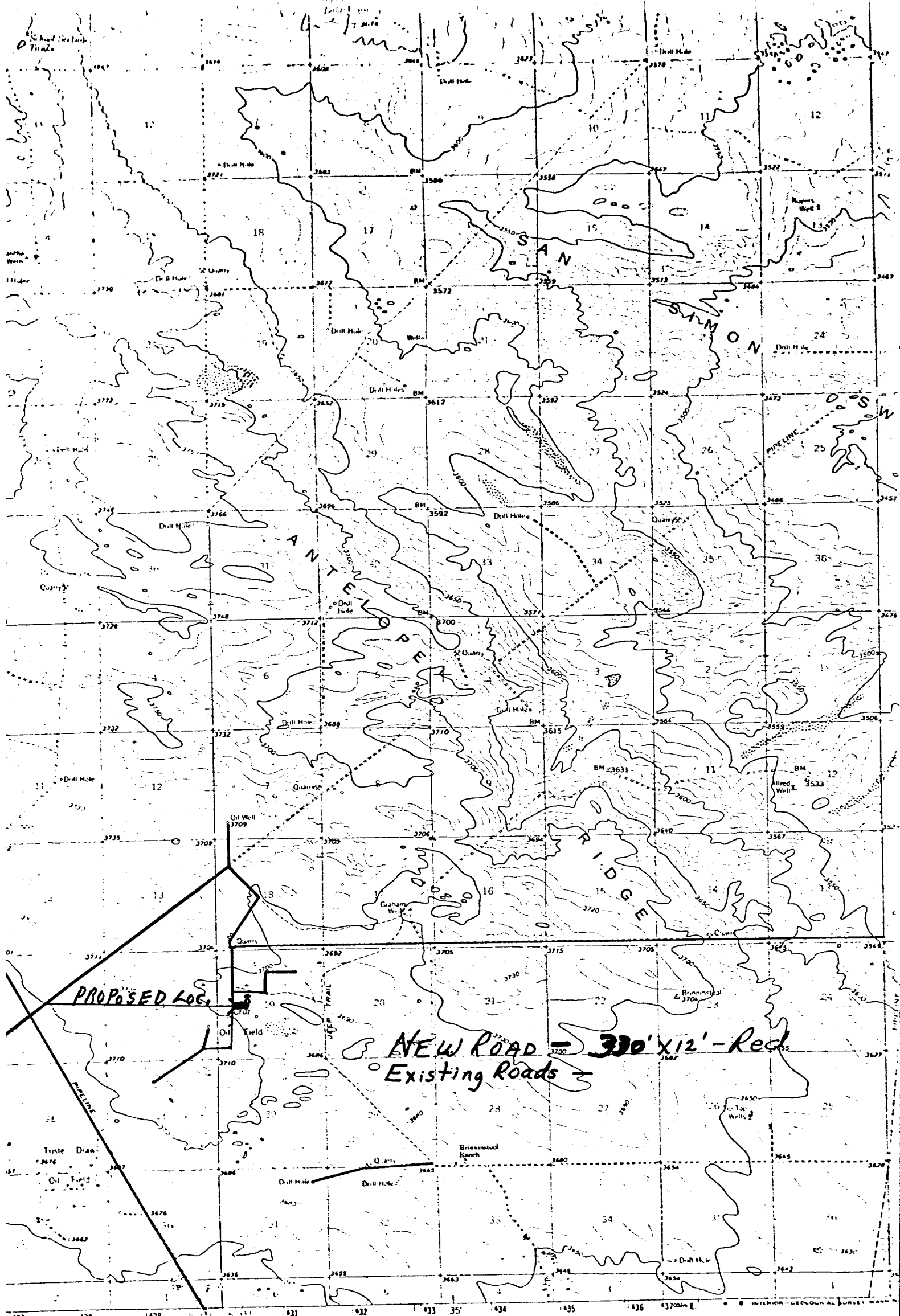
POINTS OF INTEREST E

BOAT RAMP
TIME ZONE BOUNDARY

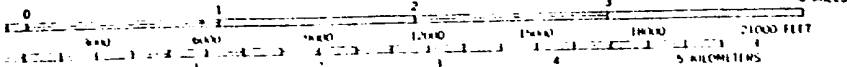
POPULATION SYMBOLS

FF: Surte Capital @ 2.500 in 4.000

17



SCALE 1:62,500



CONTOUR INTERVAL 10 FEET
DATUM IS MEAN SEA LEVEL

CONOCO
MARSHALL NO. 8
2600' FWL & 1300' FWL
Sec. 19, T-23S, R-33E



CHARTMAN-LEE LOCATION

ROAD CLASSIFICATION

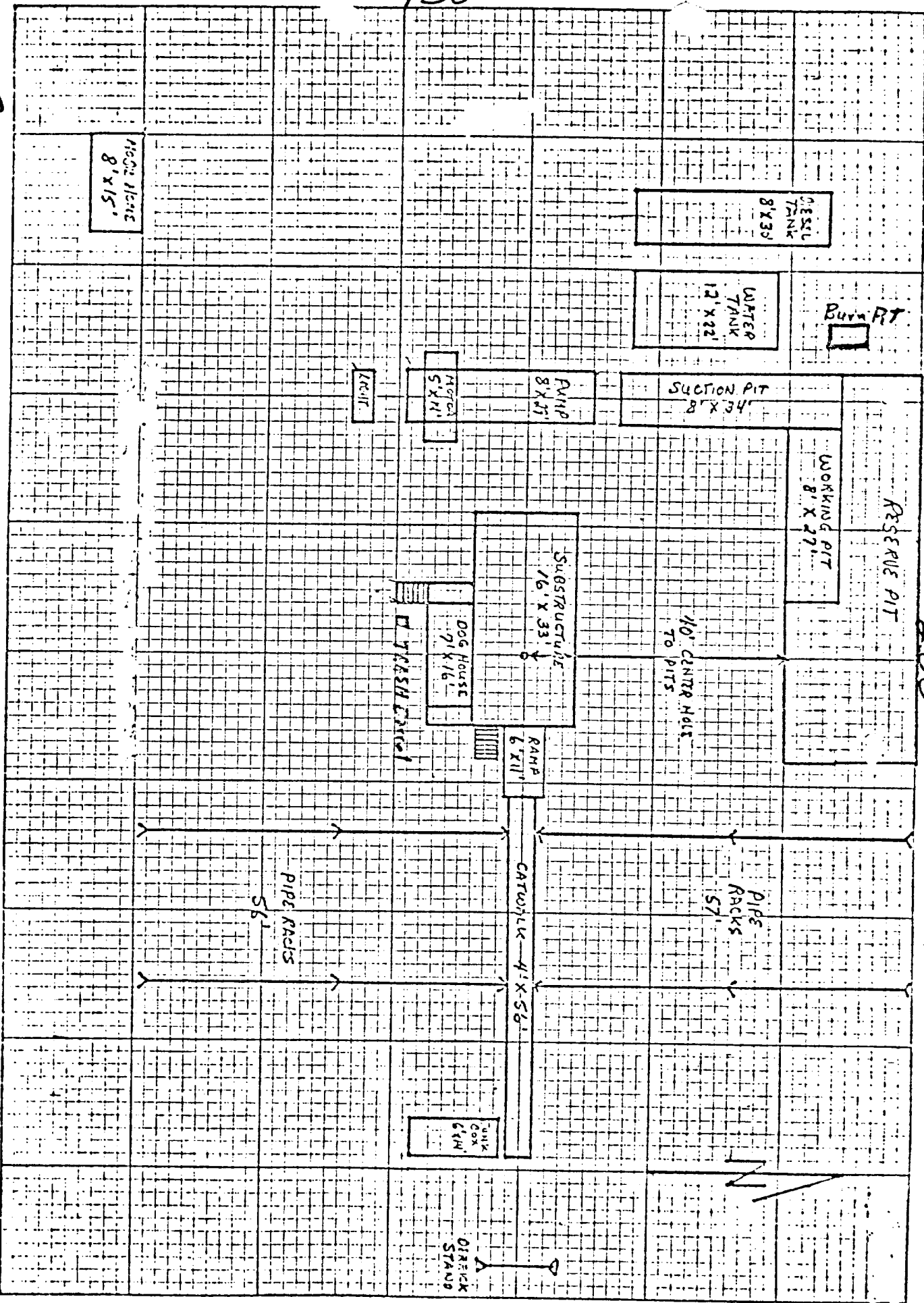
Medium duty — — — — — U

State R.

Exhibit
"B"

HAT

200



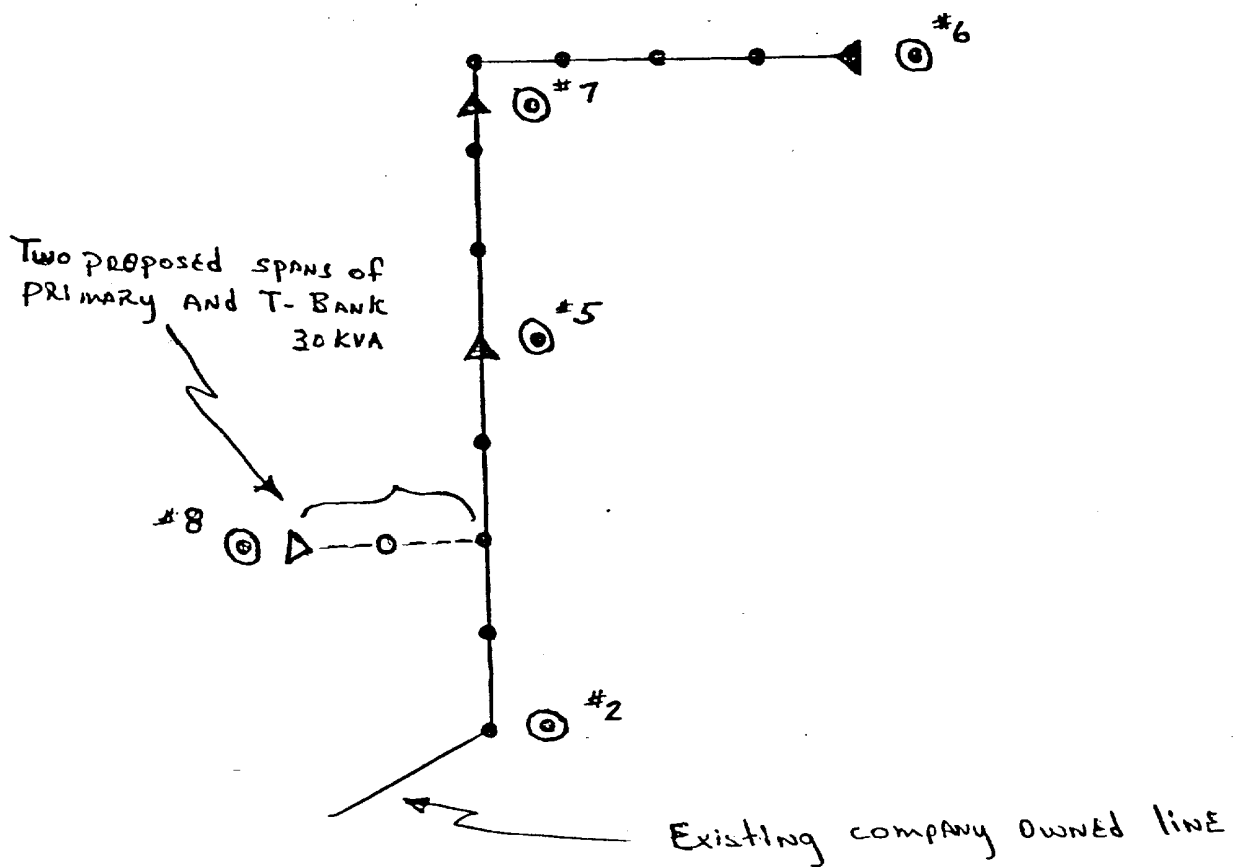
CONTINENTAL A/C COMPANY MARSHALL # 8 EXHIBIT D

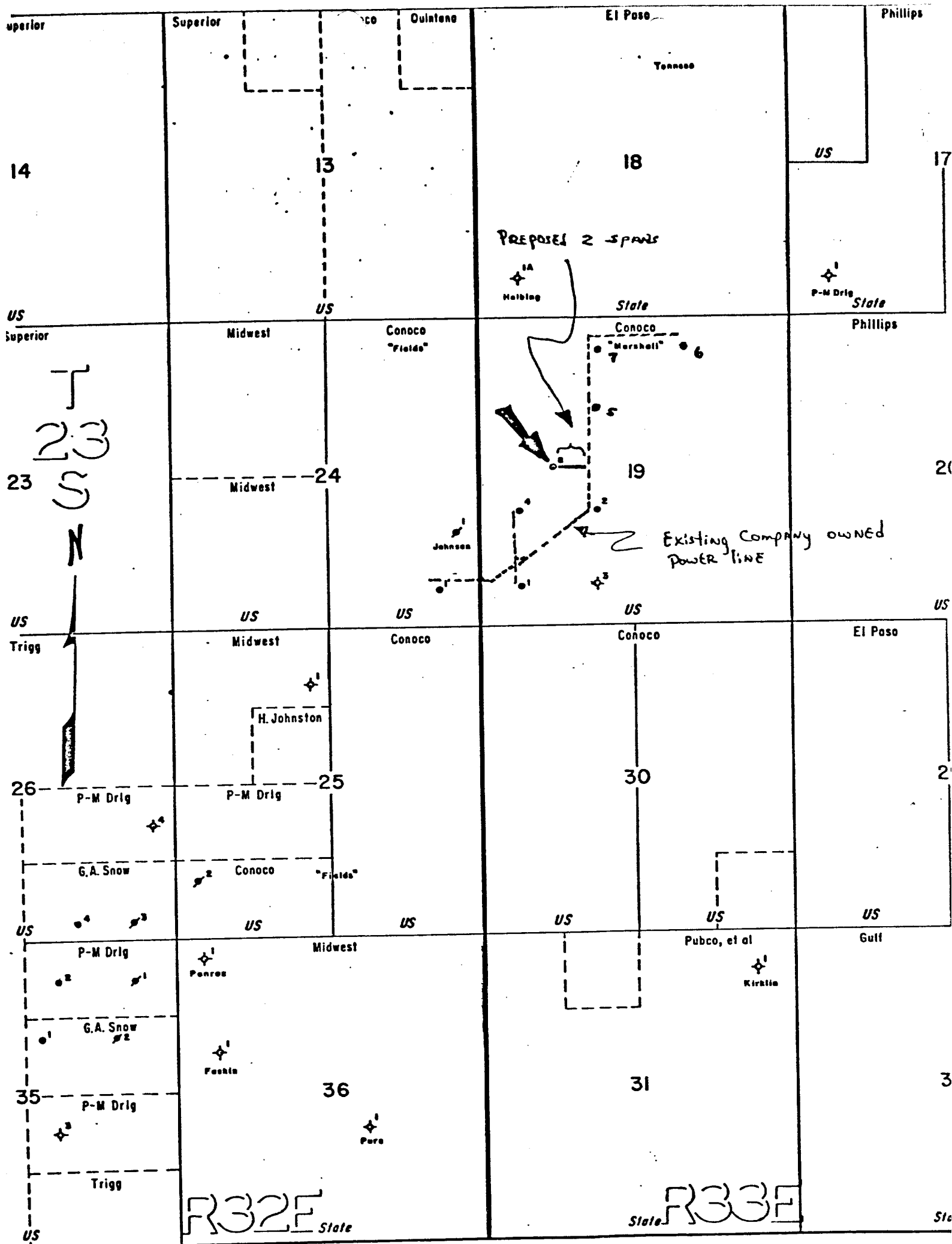
Continental Oil Company
Marshall No. 8
Power Distribution

A plat is attached showing the proposed well location, existing power lines, proposed power lines and drawings of the pole design.

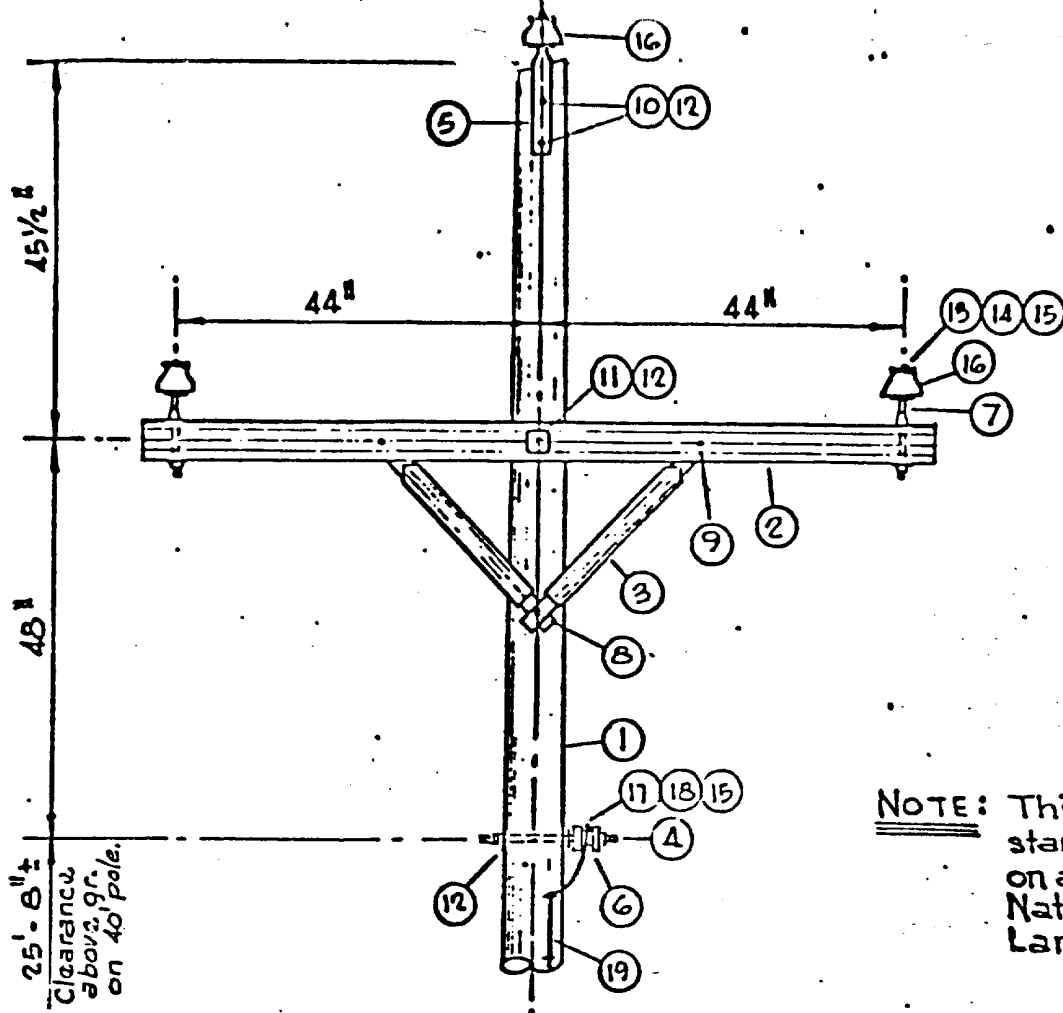
Construction will consist of building two spans of straight line primary and placing a transformer bank at the location. The line take off will tie in with existing company owned line.

POWER LINE LAYOUT "MARSHALL" #2





"Marshall" # 8



NOTE: This construction standard to be used on all lines built on National Resource Lands.

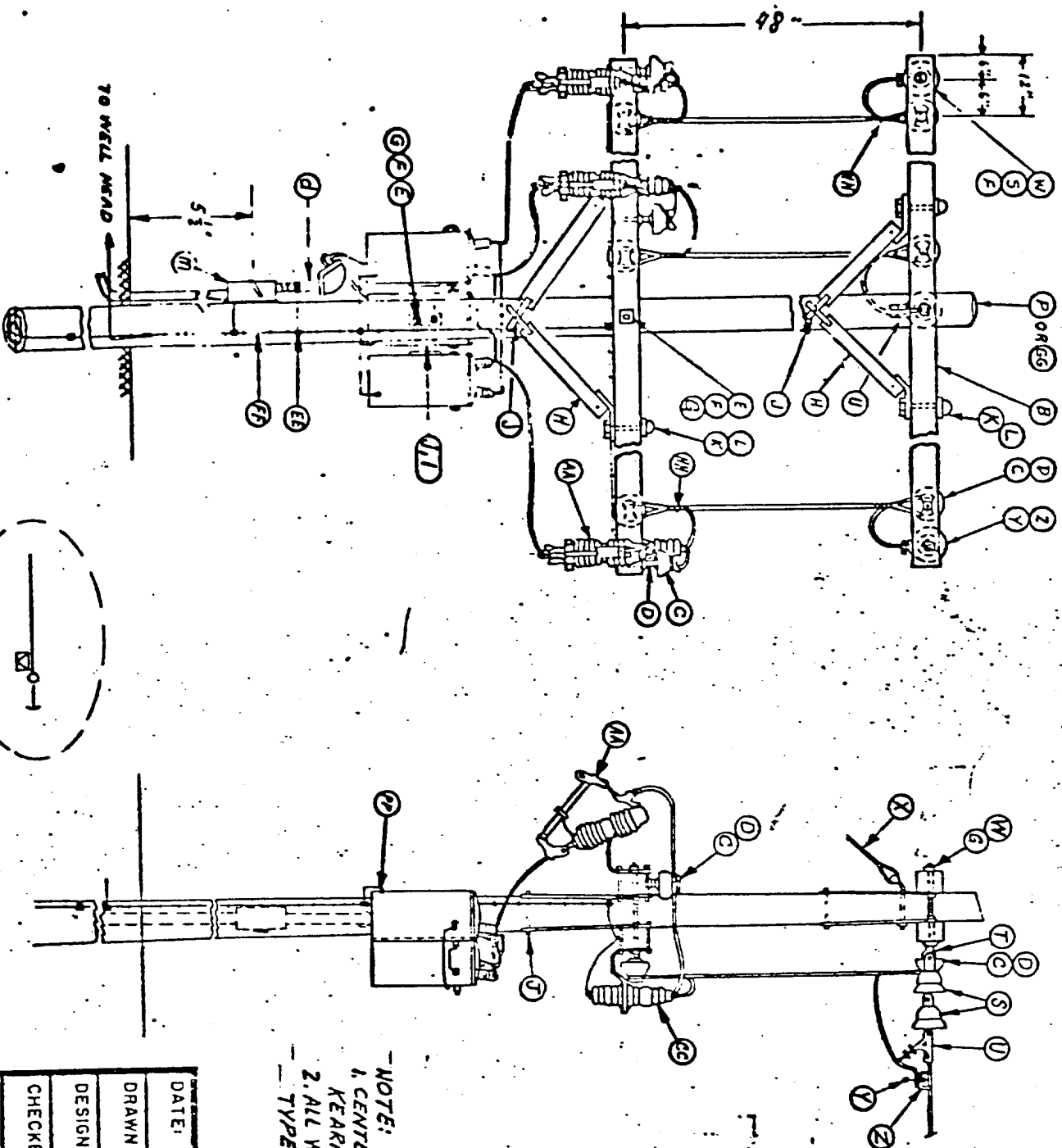
MATERIAL

ITEM	REQD.	DESCRIPTION	ITEM	REQD.	
1	1	Pole, 40'	17	—	Neutral Conductor
2	1	Crossarm, 3 1/2" x 4 1/2" x 8'	18	1	Armor Rod
3	2	Brace, Wood	19	5 #	Pole Ground Wire, #6 Cu.
4	1	Stud Rack			
5	1	Ridge Pin, 15"			
6	1	Spool Insulator			
7	2	Steel Pin, 5/8" x 5"			
8	1	Lag Screw, 1/2" x 4"			
9	2	Carrage Bolt, 3/8" x 4 1/2"			
10	2	Machine Bolt, 5/8" x 10"			
11	1	Machine Bolt, 5/8" x 14"			
12	5	Washer, 2 1/2" Sq.			
13	—	Phase Conductor			
14	3	Armor Rod			
15	1 #	Tie Wire, #6 Al.			
16	3	Pin Insulator, 9 KV			

NOTE: All bolts will have locknuts.

REVISIONS		DATE: 4-22-77	TITLE: Primary in Line Pole	
DESCRIPTION	DATE	BY	12,500 volt ACSR	
		DRAWN BY:	<div style="border: 1px solid black; padding: 5px; display: inline-block;">CONOCO</div>	
		DESIGN BY:		
		CHECKED BY: SK	PRODUCTION DEPT. HOBBS DIVISION	
		APPROVED BY:	JOB:	DRAWING NO:
		SCALE: NONE	ELFC SPROS	ES-24

ITEM	QTY	REF
B	4	
C	9	
D	9	
E	3	
F	24	
G	12	
H	8	
J	4	
K	8	
L	8	
Page	1	ES-1A, NOTE 5
5	6	
T	3	
U	3	
W	5	
X	1	
Y	3	
Z	3	
AA	3	
CC	3	
EE	8	
FE	1	
HM	6	
D	1	
J1	1	ES-1A, NOTE 2
TM	1	
PP	3	




NOTE:
 1. CENTER PHASE ON BANK WILL HAVE EPOXY INS.
 KEARKRY NO. 323015-24 INSULATOR.
 2. ALL WIRE FROM POINT "U" WILL BE INSULATED
 TYPE WIRE ON TRANSFORMER BANK.

DATE:	12-13-71
DRAWN BY:	SPD
DESIGN BY:	SPD
CHECKED BY:	
APPROVED BY:	
SCALE:	1/8" = 1"

TITLE:	SINGLE POLE CLUSTER MOUNT
1PH. TRANS. CLUSTER MOUNT	
PRIM. DEAD-END-18500/480V. AGSR	
PRODUCTION DEPT.	CONOCO
JOB:	
DRAWING NO.:	ES-9
HOBBS DIVISION	

ITEM	DESCRIPTION	A. B. CHANCE NO.	JOSLYN NO.	OTHER MFRS. NO.	NO. SUB.
A	35' class 6 creosoted pine pole				
B	3 1/2" x 4 1/2" x 8' treated crossarm				
C	High density wet process porcelain pin insulator		663		
D	5/8" x 3" forged steel pin w/eq. washer, nut, & locknut	BB1			
E	3/8" x 12" machine bolt w/ nut (or length req'd)	BB1/2			
F	2 1/4" x 2 1/4" x 3/16" x 11/16" hole sq. washer	BB1/3			
G	3/8" HF Locknut	351/2			
H	wood crossarm brace 1 5/8" x 2 5/8" x 59"	508754		GRAY BAR #217	X
J	1/2" x 4" EZ Felter Drive Log Screw	BB34 1/2			
K	3/8" x 4 1/2" Carriage Bolt w/ Nut	3510			
L	3/8" HF Locknut				
M	Preformed Aluminum Alloy Armor Rods, also req'd tie wire #6 strong alum. alloy				
N					
O					
P	40' class 5 creosoted pine pole				
R	Aluminum double tab Squeeze on Connector for ACSR, Aluminum, or Copper-else req'd			KEARNEY SERIES "B1"	X
S	6" Suspension Insulator	66200			
T	5/8" Standard Oval Eye Nut	6502	14050		
U	Priority Dead End Clamp				
V	5/8" x 18" (or length req'd) Double Arming bolt w/4 sq. nuts	BB68			
X	tying detail - see dwg No. ES-10 for specs.				
Y	Hot Line Clamp	51520AGP		KEARNEY	
Z	Squeeze on basket, also required				X

DATE: 12-27-71		TITLE: DESCRIPTION MATERIALS	
DRAWN BY: E. WINTER		<div style="text-align: center;">  </div> <div style="text-align: right;"> HOBBS DIVISION DRAWING NO. ES-1 SHEET 1 OF 3 </div>	
DESIGN BY:			
CHECKED BY:			
APPROVED BY:			
SCALE: NONE		JOB: PRODUCTION DEPT. HOBBS DIVISION	

ITEM	DESCRIPTION	A. B. CHANGE NO.	JOSLYN NO.	OTHER MFRS. NO.	NO SUB.
AA	Primary Cutout - 100 amp, 15 KV, 16000 amp int. cap.	F2XR1015G			X
BB	General Purpose "U" bolt clamp	UC510AGP			
CC	Lightning arrester, 10 KV				
DD	Single phase oil switch, 14.4 KV			MOBAY-IND-ONKAMC2	
EE	split bolt connector, size req'd			BLACKBURN T-SPIES	
FF	Grounding specs. see dwg No. ES-11 & ES-1A, Note 3				
GG	35' class 4 creosoted pine pole				
HH	Aluminum deadend Preforms for ACSR, size req'd				
JJ	30' class 6 creosoted pine pole				
KK	OVERHEAD GRND, 64 ACSR - 16 Req'd - Ref. DWG ES-11.				
LL	ES-1A - Note 3				
MM	Ground connector, motor			MOBAY AC-25	X
NN	600 V. secondary lightning arrester single phase				
OO	Greenfield Type FF liquid-tight flexible steel				
PP	conduct, size req'd, w/ necessary liquid-tight				
	connectors.				
	req'd size 1/2 flexing & cover & gasket				
	transformer tank grounding terminal	GW3-75			

DATE: 12-27-71		TITLE: DESCRIPTION MATERIAL	
DRAWN BY: E. WINTER		<div>CONOCO</div> <div>HOBBBS DIVISION</div>	
DESIGN BY:			
CHECKED BY:			
APPROVED BY:			
SCALE: NONE		JOB:	DRAWING NO: ES-1
		SPEC SPECS	
		SHEET 2 OF 3	

ITEM	DESCRIPTION	A. B. CHANGE NO.	JOSLYN NO.	OTHER MFRS. NO.	NO SUB.
a	double upset bolt s/eq. nut, round washer, and cotter key on short end, sq. nut and I/F locknut on long end, 15 1/8" long (or length required.) wet process porcelain secondary spool insulator, 3" brown glaze.	782R	1101		
b	required size conduit w/ servicehead(s) & req'd size & rated insulated conductors. Ref. Dwg ES-1B Note: provide clamp and ground conduit parallel groove clamp, size req'd			KUN NY SERIES UC	
d	secondary insulator clevis for 4" insulator	6510			
e	5/8" thimbleye nut	5512			
f	5/8" x 12" (or length req'd) straight thimbleye bolt w/eq. nut			ALUMA FORM 6M3-6	X
g	transformer cluster mount bracket (small)			ALUMA FORM 15M3-6	X
h	transformer cluster mount bracket (large)				
i	req'd size reinf'th disconnect & fuses, 3-phase, 600 V. Ref. Dwg No. ES-1B	X-16			
j	16" cross plate anchor (or size req'd)	88135			
k	8-way expanding anchor (size req'd)		10101		
l	4" brown glaze wet process porcelain secondary spool insulator	5317 (NUT 55006P)			
m	5/8" x 7' thimbleye anchor rod w/nut (use twineye if req'd - Change No. 5367)				
n	3/8" high strength guy strand (10,800 lb.)				
o	performed guy grip for 3/8" guy strand	5010			
p	5/8" x 10" angle thimbleye bolt w/nut	6443 1/2			X
q	3"x3"x1/4"x11/16" hole curved washer				
r	6" - guy clamp w/3-1/2" bolts	6454			
s	medium size strain insulator	7887			X
t	serving sleeve for 3/8" guy strand				
u	3/16" x 2-1/2" x 7" lift plate				
v	pole bottom ground plate (may use butt-wrapp if desired)				
w	Ground connection (See Dwg. ES-12)				
x	wet process porcelain secondary spool insulator, 3" - white glaze				
y	wet process porcelain secondary spool insulator, 6" - white glaze				

DATE: 12-27-71		TITLE: DESCRIPTION MATERIALS	
DRAWN BY: E. WINTER		<div>CONOCO</div> <div>HOBBBS DIVISION</div>	
DESIGN BY:			
CHECKED BY:			
APPROVED BY:			
SCALE: NONE		JOB: ELEC SPECS	DRAWING NO.: ES-1 SHEET 3 OF 5

U. S. Geological Survey

HOBBS DISTRICT

Continental Oil Co.
No. 8 Marshall
NW $\frac{1}{4}$ SW $\frac{1}{4}$ Sec. 19-23S-33E
Lea County, N. M.

Above Data Required on Well Sign

CONDITIONS OF APPROVAL

1. Drilling operations authorized are subject to compliance with the attached General Requirements for Drilling Operations on Federal Oil and Gas Leases, dated January 1, 1977.
2. Notify this office (telephone (505) 393-3612) when the well is to be spudded and in sufficient time for a representative to witness all cementing operations. Attached are names and telephone numbers of Geological Survey and Bureau of Land Management personnel who are available for consultation during construction, drilling, completion, and rehabilitation activities.
3. Immediate notice is required of all blowouts, fires, spills, and accidents involving life-threatening injuries or loss of life.
4. Secure prior approval of the District Engineer for variance from the approved drilling program and before commencing plugging operations, plug-back work, casing repair work, corrective cementing operations, or suspending drilling operations indefinitely.
5. Blowout prevention equipment is to be installed, tested, and in working order before drilling below the surface casing and shall be maintained ready for use until drilling operations are completed.
6. Operations must be in compliance with the provisions of the landowner agreement concerning surface disturbance and surface restoration.