

NEW MEXICO OIL CONSERVATION COMMISSION
WELL LOCATION AND ACREAGE DEDICATION PLAT

Form No. 1
Supersedes Form No. 1
Rev. 1-6-66

All distances must be from the outer boundaries of the Section

MARATHON OIL COMPANY

Lease

Walter Lynch

8

E

1

22 South

Range

37 East

Lea

1880

north

760

west

3356.1

Granite Wash

Wantz Granite Wash

40

Outline the acreage dedicated to the subject well by colored pencil or hatchure marks on the plat below.

If more than one lease is dedicated to the well, outline each and identify the ownership thereof (both as to working interest and royalty).

If more than one lease of different ownership is dedicated to the well, have the interests of all owners been consolidated by communitization, unitization, force-pooling, etc?

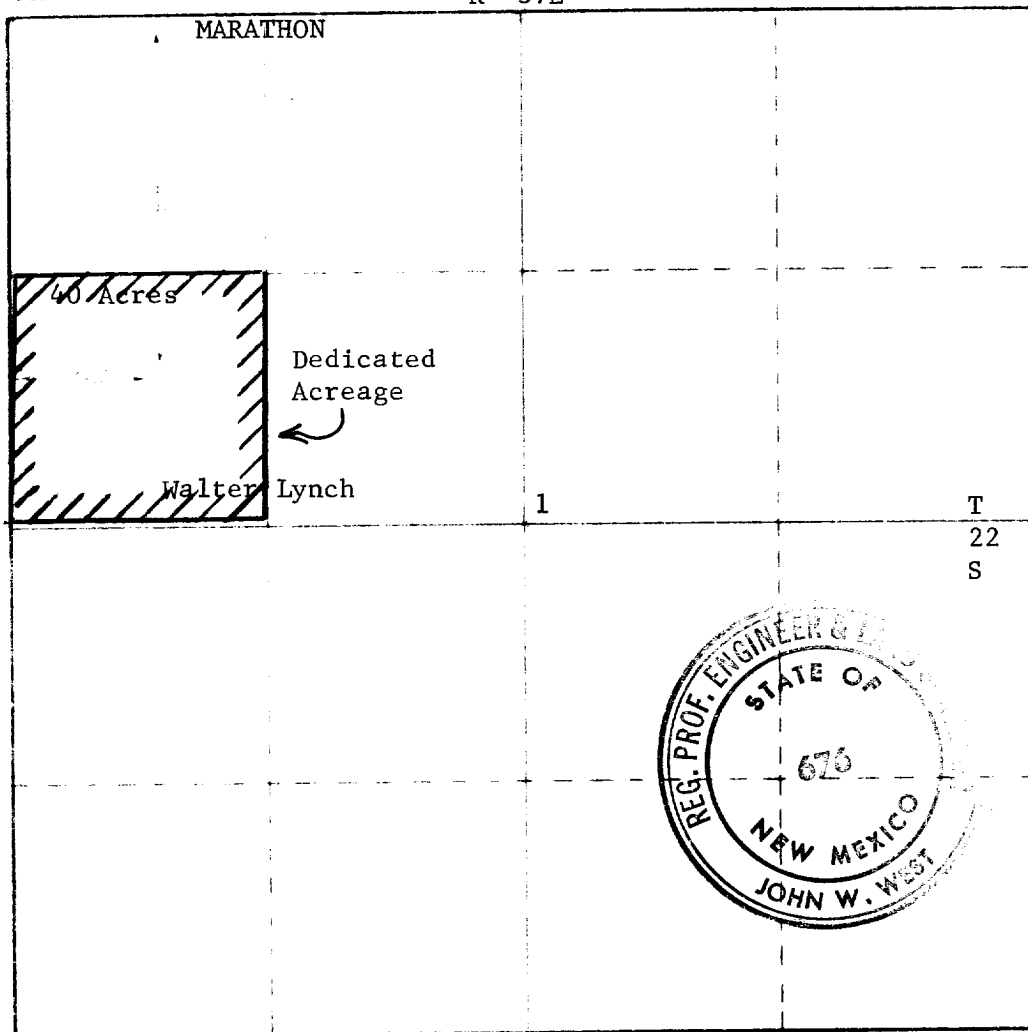
Yes ☒ No ☐ If answer is "yes," type of consolidation _____

If answer is "yes," list the owners and tract descriptions which have actually been consolidated. (Use reverse side of this form if necessary.) _____

No acreage will be assigned to the well until all interests have been consolidated (by communitization, unitization, force-pooling, or otherwise) or until a non-standard unit, eliminating such interests, has been approved by the Commission.

Section

R-37E



CERTIFICATION

I hereby certify that the information furnished herein is true and complete to the best of my knowledge and belief.

William R. Huck

William R. Huck

Assoc. Production Engineer

Marathon Oil Company

September 7, 1977

I hereby certify that the well location shown on this plat was plotted from field notes of actual surveys made by me or under my supervision, and that the same is true and correct to the best of my knowledge and belief.

Date of Survey

Spet. 6, 1977

Registered Professional Engineer

No. 1-10-18-1977

John W. West

676

RECEIVED

SEP 7 1977

OIL CONSERVATION COMM.
HOBBS, N. M.

FILE