

UNITED STATES
DEPARTMENT OF THE INTERIOR
GEOLOGICAL SURVEY

APPLICATION FOR PERMIT TO DRILL, DEEPEN, OR PLUG BACK

1a. TYPE OF WORK

DRILL ☒DEEPEN ☐PLUG BACK ☐

b. TYPE OF WELL

OIL
WELL ☒GAS
WELL ☐OTHER ☐SINGLE
ZONE ☐MULTIPLE
ZONE ☐

2. NAME OF OPERATOR

MARTINDALE PETROLEUM CORPORATION

3. ADDRESS OF OPERATOR

Box 1955, Hobbs, NM 88240

4. LOCATION OF WELL (Report location clearly and in accordance with any State requirements.)*

At surface

1980' FWL and 860' FNL Section 18, T-22S, R-37E

At proposed prod. zone

14. DISTANCE IN MILES AND DIRECTION FROM NEAREST TOWN OR POST OFFICE*

3 miles southwest of Eunice, New Mexico

16. DISTANCE FROM PROPOSED*

LOCATION TO NEAREST
PROPERTY OR LEASE LINE, FT.
(Also to nearest drig. unit line, if any)

18. NO. OF ACRES IN LEASE

80

18. DISTANCE FROM PROPOSED LOCATION*

TO NEAREST WELL, DRILLING, COMPLETED,
OR APPLIED FOR, ON THIS LEASE, FT.

19. PROPOSED DEPTH

7,000'

17. NO. OF ACRES ASSIGNED
TO THIS WELL

40

20. ROTARY OR CABLE TOOLS

rotary

21. ELEVATIONS (Show whether DF, BT, GR, etc.)

3423.7 GR

22. APPROX. DATE WORK WILL START*

November 1, 1977

23. PROPOSED CASING AND CEMENTING PROGRAM

SIZE OF HOLE	SIZE OF CASING	WEIGHT PER FOOT	SETTING DEPTH	QUANTITY OF CEMENT
11 1/2"	8 5/8" new	K-55 24#	1,200'	625 sx circ.
7 7/8"	5 1/2" new	K-55 17-20#	7,000'	1700 sx circ. inside surface pipe

SEE ATTACHMENTS

SEE ATTACHED FOR
CONDITIONS OF APPROVALUnless Drilling Operations have
Commenced, this drilling approval
Expires 12-31-77

IN ABOVE SPACE DESCRIBE PROPOSED PROGRAM: If proposal is to deepen or plug back, give data on present productive zone and proposed new productive zone. If proposal is to drill or deepen directionally, give pertinent data on subsurface locations and measured and true vertical depths. Give blowout preventer program, if any.

24.

SIGNED

TITLE

Secretary-Treasurer

DATE Sept. 7, 1977

(This space for Federal or State office use)

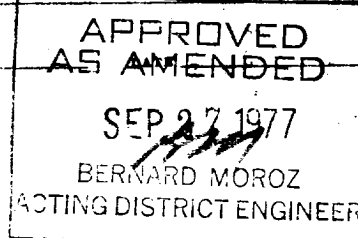
PERMIT NO.

APPROVAL DATE

APPROVED BY

TITLE

CONDITIONS OF APPROVAL, IF ANY:

APPROVAL IS PLACE GRANTED
WHILE DRILLING AND TESTING. *See Instructions On Reverse Side

2

Lea

West

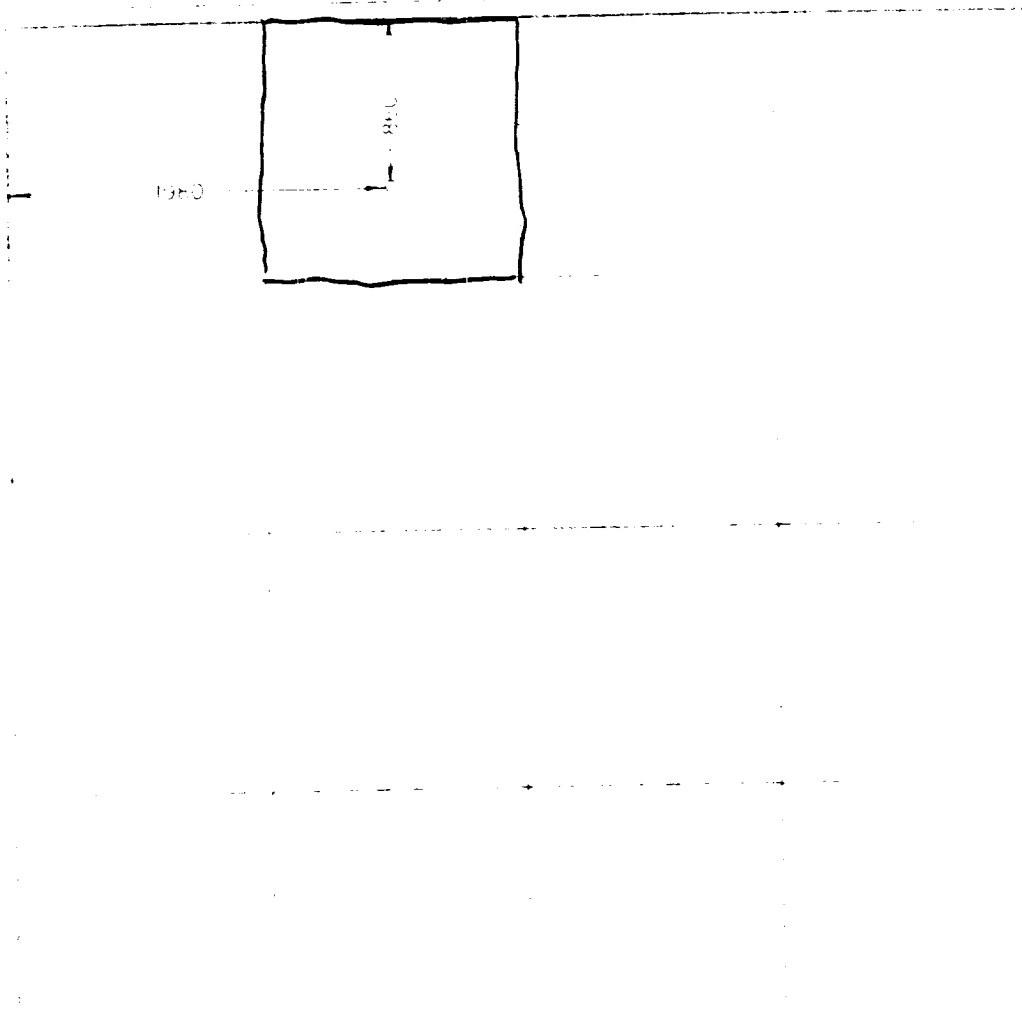
40

[illegible]

Yes ☐ No ☐ Reason: is "Yes" type of assessment data ☐ is ☐ is not ☐ is not

presented with the fact the owners did not take any more of the same form if necessary.

(c) All waste will be assigned to the well category interests having the largest percentage of ownership in the well category, or otherwise in accordance with standard unitized operating such interests as to approve the interest.



Jo Johnson

Secretary-Treasurer

Martindale Petroleum Corp.

September 7, 1977

August 3, 1977

John A. West

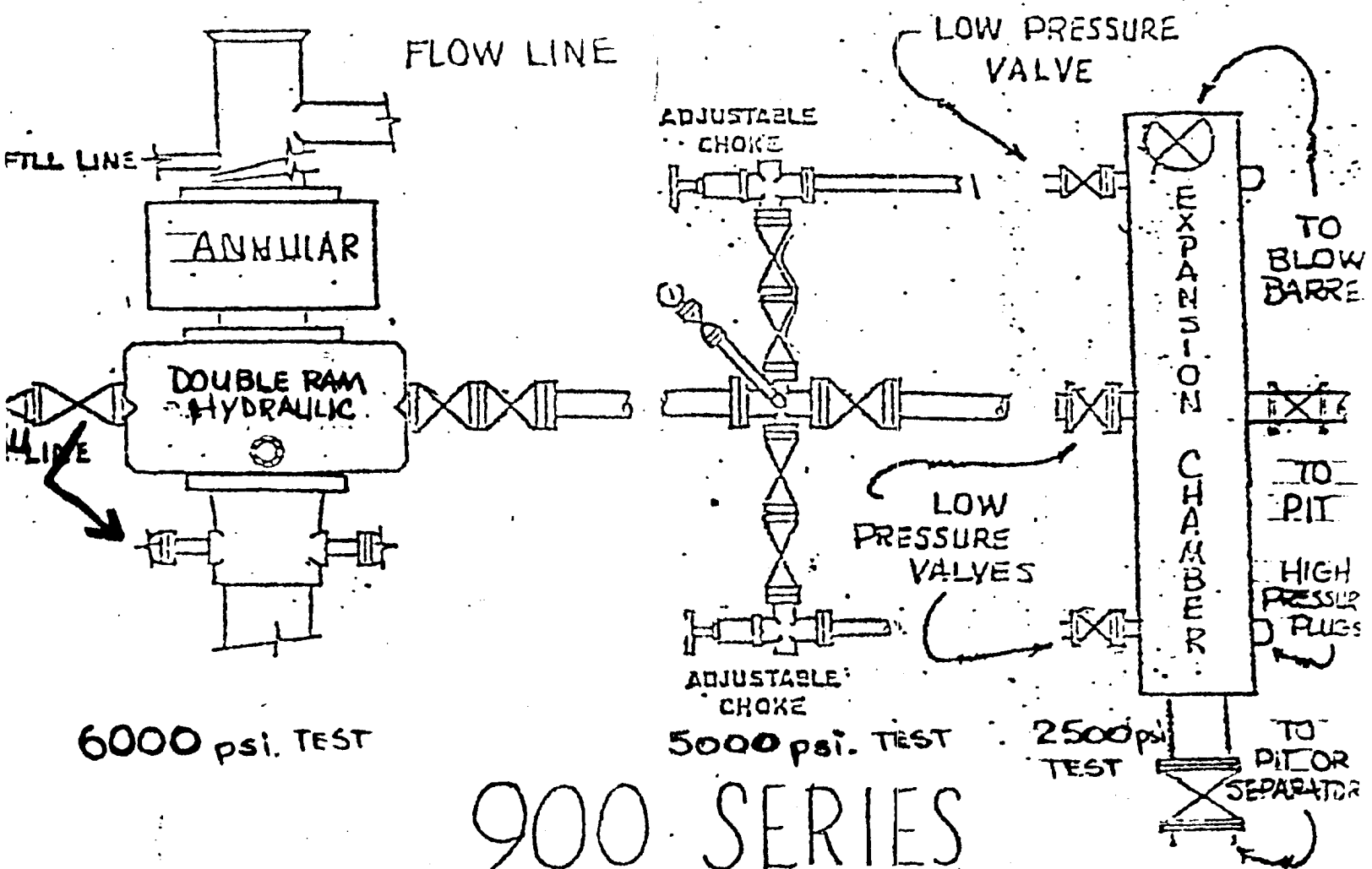
MARTINDALE PETROLEUM CORPORATION
WELL NO. 2 DECK FEDERAL
1980' FWL and 860' FNL Sec. 18, T22S, R37E
Lea County, New Mexico
Lease # LC 034548

ATTACHMENT TO FORM 9-331C in compliance with NTL-6

1. Recent is the name of the surface formation.
2. Estimated tops of important geologic markers:

Anhydrite	1075'
Top of salt	1175'
Base of salt	2470'
Yates	2640'
Queen	3370'
Glorieta	5130'
Blinbry	5450'
Tubb	6155'
Drinkard	6470'
3. Water, oil and gas formations are expected to be encountered from the Yates @ 2640' through the Drinkard 7000'.
4. Proposed casing program appears on face of form 9-331C.
5. Pressure control equipment - see attachment A.
6. A controlled salt brine mud system will be employed. Loss circulation material will be used as hole dictates.
Mud up properties as follows:

Weight	10.1 - 10.3#/gal.
Viscosity	36-40 sec./1000cc
Water Loss	8-12 cc/30 min.
Filter Cake	2/32
PH	8.0 - 9.0
7. The auxiliary equipment to be used will include [1] kelly cocks, [2] floats at the bit, [3] monitoring equipment on the mud system, if required, and [4] a sub on the floor with a full opening valve to be stabbed into drill pipe when the kelly is not in the string.
8. Testing program - sample analysis while drilling and full suite electrical logging.
9. Abnormal pressures or temperatures - none anticipated - BOP will be in operation.
10. Anticipated starting date - November 1, 1977
Duration of operations - 45 days.



DAILY OPERATIONAL TESTS OF ALL BOP. EQUIPMENT.

CREW PERFORMANCE DRILLS IN EVENT OF A GAS KICK.

BURTON VETETO
Drilling & Production Manager
Office (505) 397-1191
Home (505) 397-1773

MRS. JO JOHNSON
Production Clerk
Office (505) 397-1591
Home (505) 393-4307

ROBERT L. SUMMERS
President
Office (505) 363-2123

*Martindale Petroleum
Corporation*

P. O. BOX 1955

Hobbs, New Mexico 88240

TO WHOM IT MAY CONCERN:

Mr. Millard Deck, the private owner of the land surface resides in Eunice, NM. He has been contacted regarding the surface damage and the restoration of the surface. It has been agreed that upon completion of the #2 Deck Federal well, all pits will be filled and leveled and the location cleaned of trash and junk. After the subsequent abandonment of the well, all equipment will be removed and the location returned to its natural contour.

MARTINDALE PETROLEUM CORPORATION

Burton Veteto

Burton Veteto
Drilling Manager

BV/JJ ✓

#2 Deck Federal

U. S. Geological Survey

HOBBS DISTRICT

Martindale Petroleum Corp. No. 2 Deck Federal NE $\frac{1}{4}$ NW $\frac{1}{4}$ sec. 18-22S-37E Lea County, N. M.
--

Above Data Required on Well Sign

CONDITIONS OF APPROVAL

1. Drilling operations authorized are subject to compliance with the attached General Requirements for Drilling Operations on Federal Oil and Gas Leases, dated January 1, 1977.
2. Notify this office (telephone (505) 393-3612) when the well is to be spudded and in sufficient time for a representative to witness all cementing operations. Attached are names and telephone numbers of Geological Survey and Bureau of Land Management personnel who are available for consultation during construction, drilling, completion, and rehabilitation activities.
3. Immediate notice is required of all blowouts, fires, spills, and accidents involving life-threatening injuries or loss of life.
4. Secure prior approval of the District Engineer for variance from the approved drilling program and before commencing plugging operations, plug-back work, casing repair work, corrective cementing operations, or suspending drilling operations indefinitely.
5. Blowout prevention equipment is to be installed, tested, and in working order before drilling below the surface casing and shall be maintained ready for use until drilling operations are completed.
6. Operations must be in compliance with the provisions of the landowner agreement concerning surface disturbance and surface restoration.

473

473