

B. OUT PREVENTER SPECIFICATION
EQUIPMENT DESCRIPTION

TYPE II-C

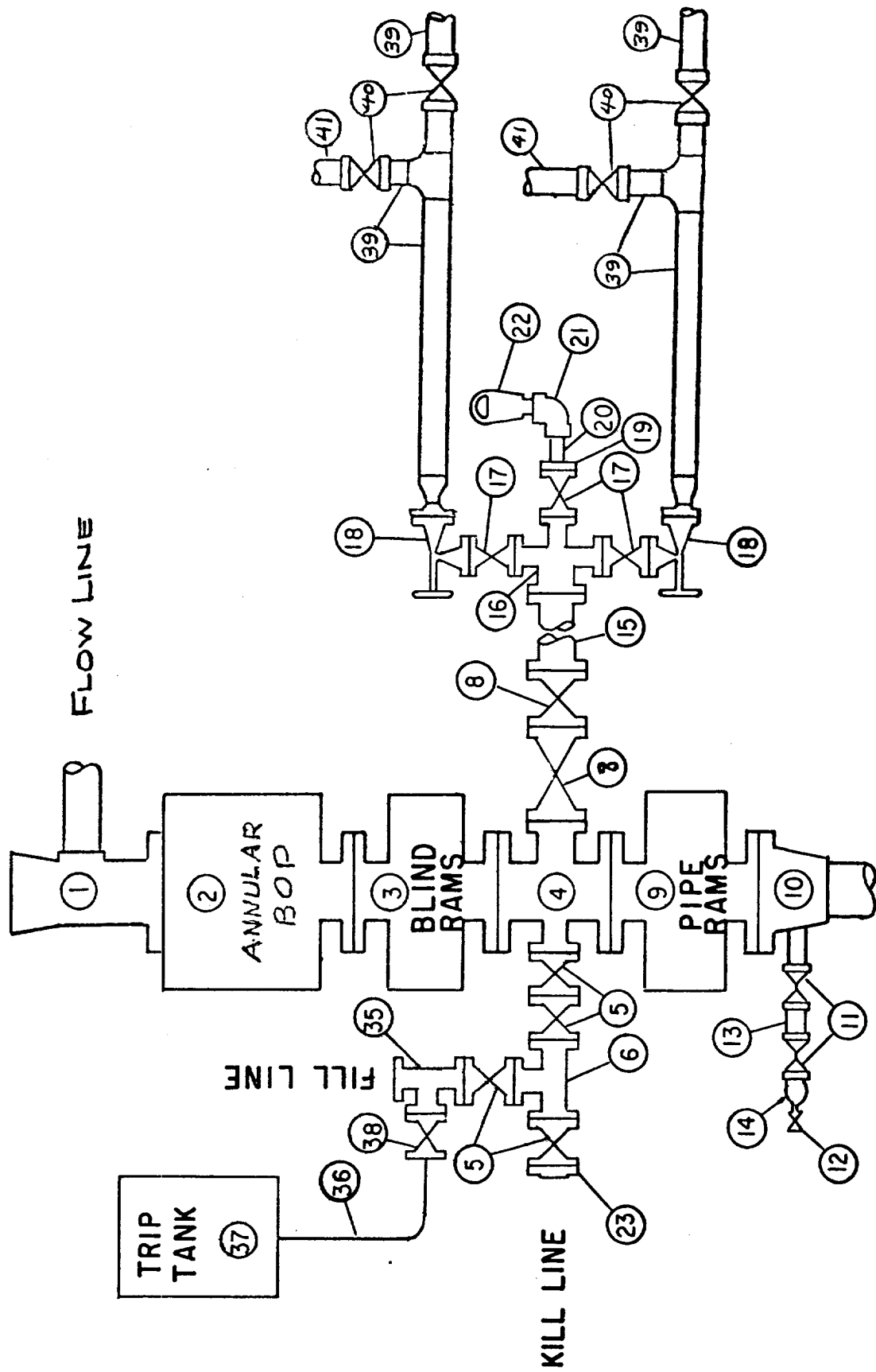
All equipment should be at least 2000 psi WP or higher unless otherwise specified.

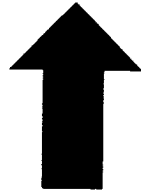
1. Bell nipple.
2. Hydril or Shaffer bag type preventer.
3. Ram type pressure operated blowout preventer with blind rams.
4. Flanged spool with one 4-inch and one 2-inch (minimum) outlet.
5. 2-inch (minimum) flanged plug or gate valve.
6. 2-inch by 2-inch by 2-inch (minimum) flanged tee.
8. 4-inch flanged gate or plug valve.
9. Ram type pressure operated blowout preventer with pipe rams.
10. Flanged type casing head with one side outlet (furnished by Exxon).
11. 2-inch threaded (or flanged) plug or gate valve (furnished by Exxon).
Flanged on 5000# WP, threaded on 3000# WP or less.
12. Needle valve (furnished by Exxon).
13. 2-inch nipple (furnished by Exxon).
14. Tapped bull plug (furnished by Exxon).
15. 4-inch flanged spacer spool.
16. 4-inch by 2-inch by 2-inch by 2-inch flanged cross.
17. 2-inch flanged plug or gate valve.
18. 2-inch flanged adjustable choke.
19. 2-inch threaded flange.
20. 2-inch XXH nipple.
21. 2-inch forged steel 90° Ell.
22. Cameron (or equal.) threaded pressure gage.
23. Threaded flange.
35. 2-inch flanged tee.
36. 3-inch (minimum) hose. (Furnished by Exxon).
37. Trip tank. (Furnished by Exxon).
38. 2-inch flanged plug or gate valve.
39. 2-1/2-inch pipe, 300' to pit, anchored.
40. 2-1/2-inch SE valve.
41. 2-1/2-inch line to steel pit or separator.

NOTES:

1. Items 3, 4 and 9 may be replaced with double ram type preventer with side outlets between the rams.
2. The two valves next to the stack on the fill and kill line to be closed unless drill string is being pulled.
3. Kill line is for emergency use only. This connection shall not be used for filling.
4. Replacement pipe rams and blind rams shall be on location at all times.
5. Only type U, LWS and QRC ram type preventers with secondary seals are acceptable for 5000 psi WP and higher BOP stacks.
6. Type E ram-type BOP's with factory modified side outlets may be used on 3000 psi or lower WP BOP stacks.

MIDLAND DRILLING ORGANIZATION
BLOWOUT PREVENTER SPECIFICATION
 TYPE II - C





LTR



Job separation sheet

COUNTY LEA FIELD Drinkard STATE NM
OPR EXXON CO. API 30-025-26018
NO 48 LEASE New Mexico "M" State MAP
Sec 17, T22S, R37E CO-ORD
660' FNL, 560' FWL of Sec 9-1-31
3 mi SW/Eunice SPD 7-14-78 CMP 7-28-78

CSC

8 5/8" at 1072' w/620 sx
5 1/2" at 6721' w/1565 sx

WELL CLASS: INIT D FIN DO ELEV			
FORMATION	DATUM	FORMATION	DATUM
TD 6730' (DRKD)		PBD 6675'	

IP (Drinkard) Perfs 6404-6560' F 140 BOPD + 7 BW. Pot
based on 24 hr test thru 32/64" chk. GOR 1757; gty 35.6;
CP Pkr; TP 50#

CONTR Rod-Ric OPRSELEV 3416' KB PD 6750' RI

F.R. 7-17-78
(Drinkard)
7-24-78 Drlg 4110'
7-31-78 Drlg 6600'
8-7-78 TD 6730'; PBD 6675'; Tstg
Perf (Drinkard) 6404-6560' (overall)
Acid (6404-6560') 21,000 gals
8-14-78 TD 6730'; PBD 6675'; WOSP
8-28-78 TD 6730'; PBD 6675'; Complete
LOG TOPS: Yates 2660', Seven Rivers
3104', Queen 3352', Grayburg 3621',
San Andres 3965', Blinbry 5500',
Drinkard 6386'
LOGS RUN: DILL, MLAT, GRL, CNDL
9-2-78 COMPLETION ISSUED

9-1-31 NM
IC 30-025-70247-78