

**NEW MEXICO OIL CONSERVATION COMMISSION  
WELL LOCATION AND ACREAGE DEDICATION PLAT**

Form C-102  
Supersedes C-128  
Effective 1-1-65

All distances must be from the outer boundaries of the Section

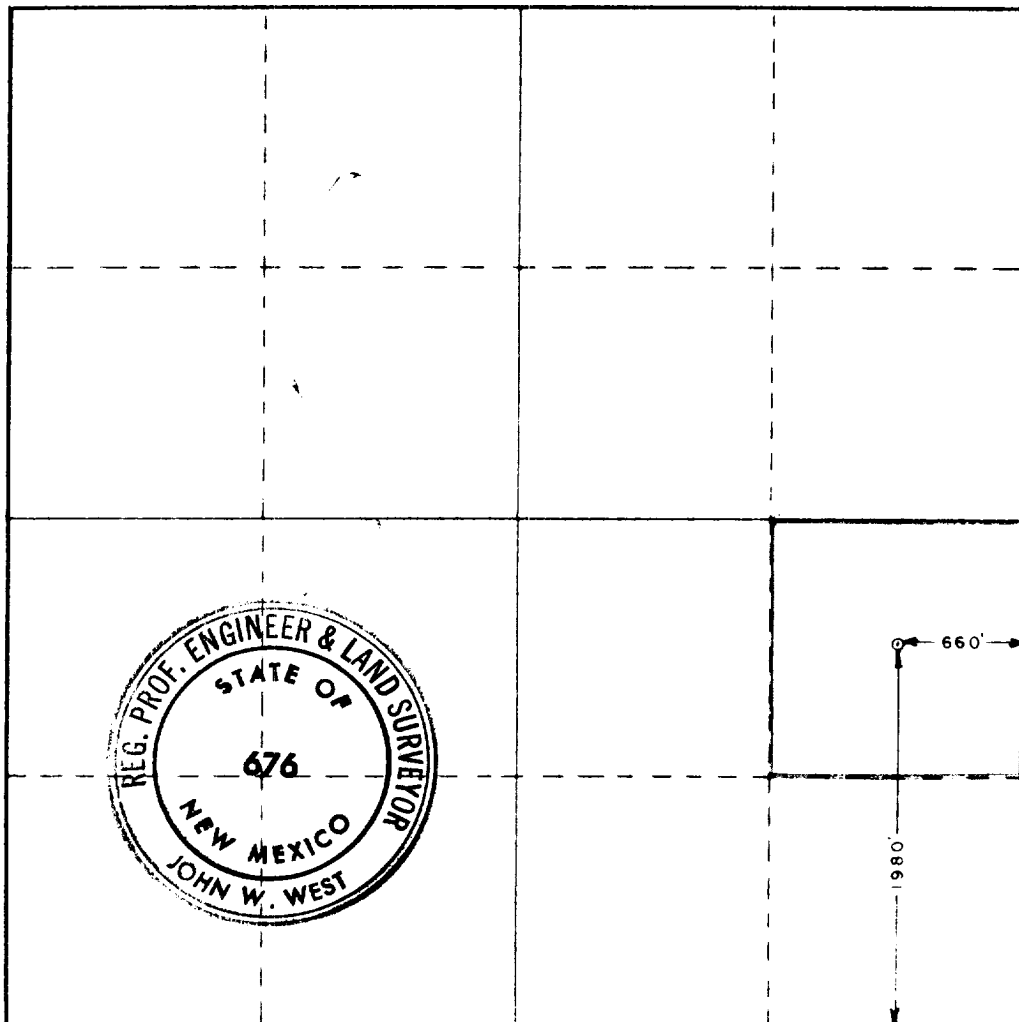
Operator <b>Dallas McCasland</b>		Lease <b>Closson B</b>		Well No. <b>24</b>
Unit Letter <b>I</b>	Section <b>30</b>	Township <b>22 South</b>	Range <b>36 East</b>	County <b>Lea</b>
Actual Portage Location of Well:				
<b>1980</b>	feet from the <b>South</b>	line and <b>660</b>	feet from the <b>East</b>	line
Ground Level Elev. <b>3535.5</b>	Producing Formation <b>Yates-Seven Rivers</b>	Pool <b>Jalmat</b>	Dedicated Acreage: <b>40</b> Acres	

1. Outline the acreage dedicated to the subject well by colored pencil or hatchure marks on the plat below.
2. If more than one lease is dedicated to the well, outline each and identify the ownership thereof (both as to working interest and royalty).
3. If more than one lease of different ownership is dedicated to the well, have the interests of all owners been consolidated by communitization, unitization, force-pooling, etc?

☐ Yes    ☐ No    If answer is "yes," type of consolidation \_\_\_\_\_

If answer is "no," list the owners and tract descriptions which have actually been consolidated. (Use reverse side of this form if necessary.) \_\_\_\_\_

No allowable will be assigned to the well until all interests have been consolidated (by communitization, unitization, forced-pooling, or otherwise) or until a non-standard unit, eliminating such interests, has been approved by the Commission.



**CERTIFICATION**

I hereby certify that the information contained herein is true and complete to the best of my knowledge and belief.

Name *Dallas McCasland*  
Position

**Agent**

Company  
**Dallas McCasland**

Date  
**August 17, 1978**

I hereby certify that the well location shown on this plat was plotted from field notes of actual surveys made by me or under my supervision, and that the same is true and correct to the best of my knowledge and belief.

Date Surveyed  
**August 14, 1978**

Registered Professional Engineer  
and/or Land Surveyor

*John W. West*

Certification by \_\_\_\_\_

RECEIVED

NOV 21 1978

U.S. CONSERVATION COMMISSION  
FEDERAL BUREAU OF INVESTIGATION