

**NEW MEXICO OIL CONSERVATION COMMISSION
WELL LOCATION AND ACREAGE DEDICATION**

Form C-102
Supersedes C-128
Effective 1-4-65

All distances must be from the outer boundaries of the Section

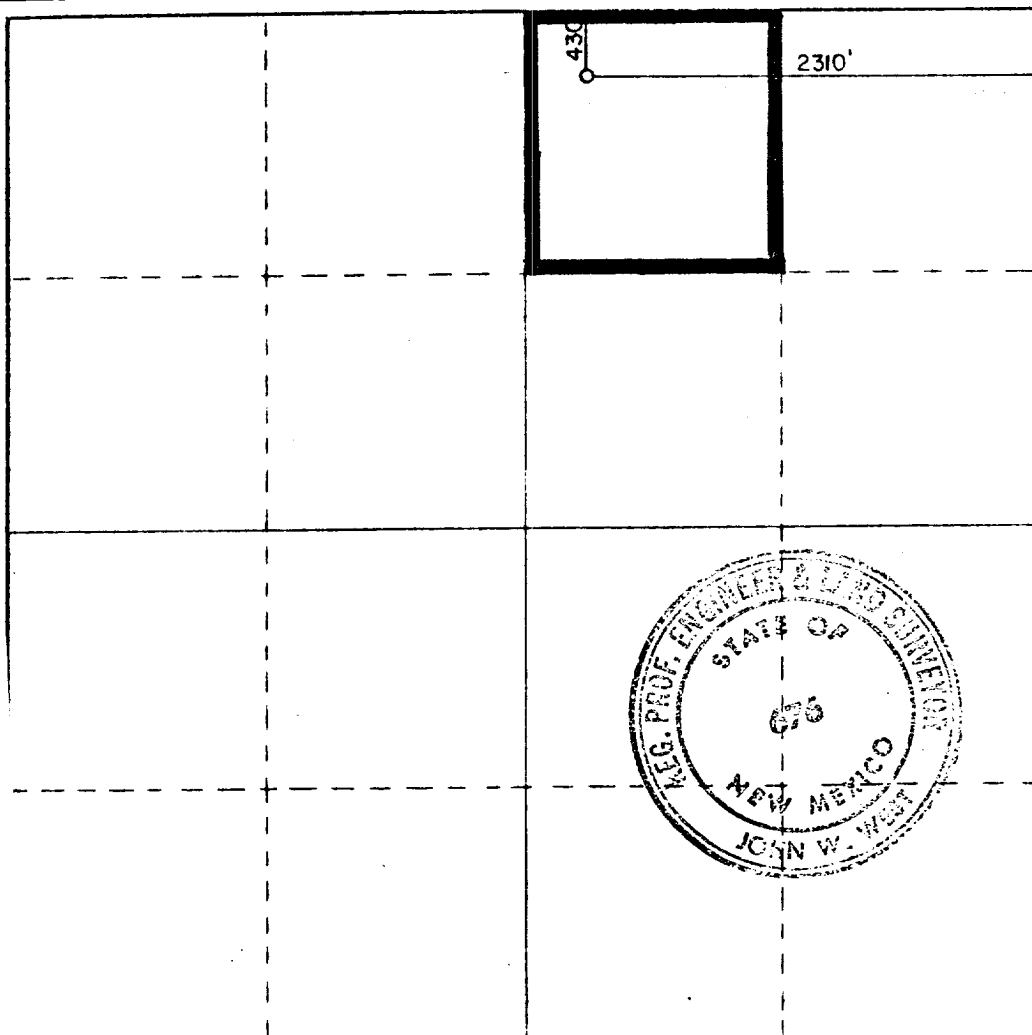
Owner GULF OIL CORP.			Lease R.E. Cole State (NCT-A)		Well No. 21
Tract Letter B	Section 16	Township 22 South	Range 37 East	County Lea	
Actual Footage Location of Wells: 430 feet from the North line and 2310 feet from the East line					
Ground Level Elev. 3407.3	Producing Formation Drinkard	Pool Drinkard		Dedicated Acreage: 40 Acres	

1. Outline the acreage dedicated to the subject well by colored pencil or hachure marks on the plat below.
2. If more than one lease is dedicated to the well, outline each and identify the ownership thereof (both as to working interest and royalty).
3. If more than one lease of different ownership is dedicated to the well, have the interests of all owners been consolidated by communitization, unitization, force-pooling, etc?

☐ Yes ☐ No If answer is "yes," type of consolidation _____

If answer is "no," list the owners and tract descriptions which have actually been consolidated. (Use reverse side of this form if necessary.) _____

No allowable will be assigned to the well until all interests have been consolidated (by communitization, unitization, forced-pooling, or otherwise) or until a non-standard unit, eliminating such interests, has been approved by the Commission.



CERTIFICATION

I hereby certify that the information contained herein is true and complete to the best of my knowledge and belief.

R. C. Anderson

Name

R. C. Anderson

Position

Area Production Manager

Company

Gulf Oil Corporation

Date

9-14-79

I hereby certify that the well location shown on this plat was plotted from field notes of actual surveys made by me or under my supervision, and that the same is true and correct to the best of my knowledge and belief.

Date Surveyed

August 31, 1979

Registered Professional Engineer and/or Land Surveyor

John W. West

Certificate No.

John W. West

676

Ronald J. Eidson

3239

330 660 1320 1980 2640 3300 3960 4620 5280 5940 6600

RECEIVED
SEP 17 1964
O.C.D. HOBBS. OFFICE

173