

MEXICO OIL CONSERVATION COMMISSION
WELL LOCATION AND ACREAGE DEDICATION PLAT

Form C-112
 Superseded C-112
 Effective 1-1-65

All distances must be from the outer boundaries of the Section

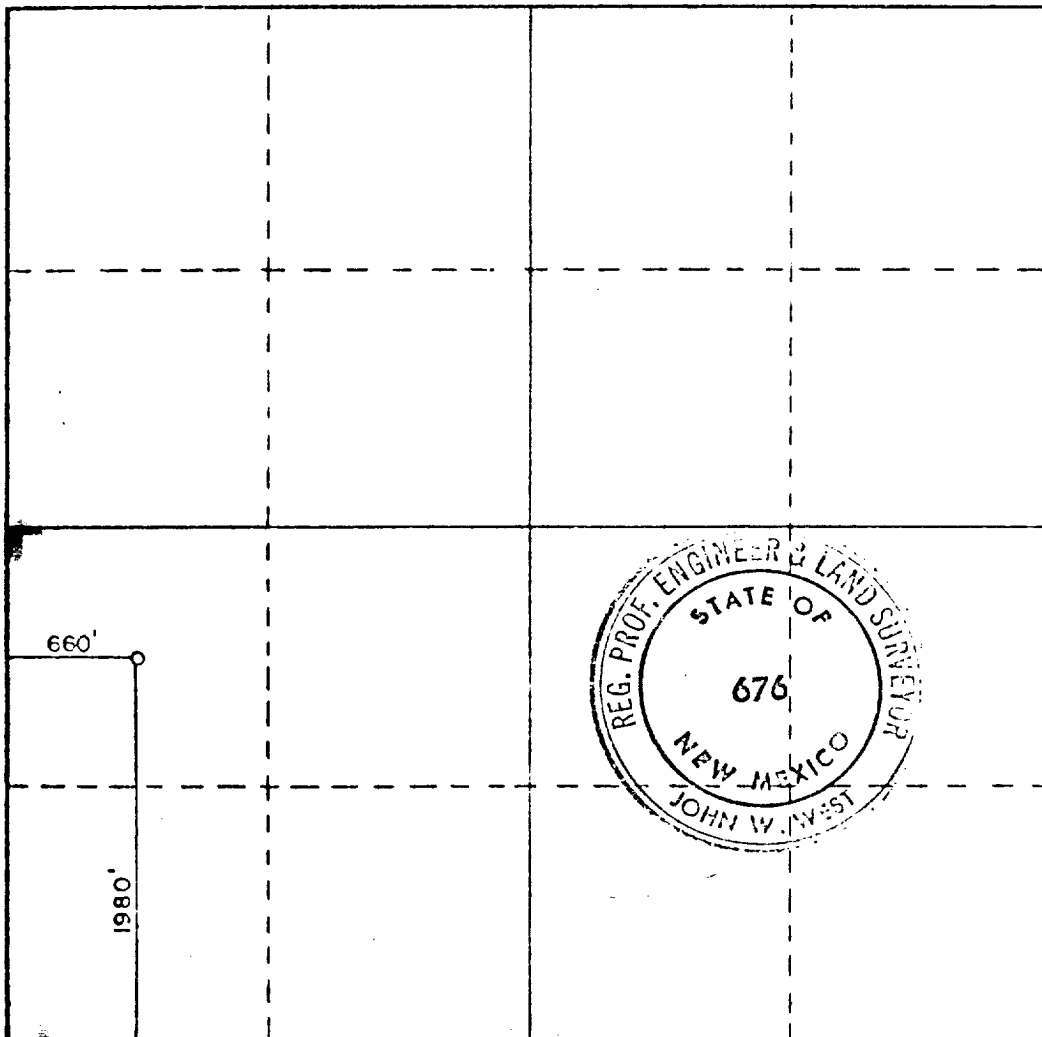
Operator Saba Energy, Inc. AMOCO/PRODUCTION CO.			Lease State HL		Acct. No. 1
Unit Letter L	Section 2	Township 23 South	Range 33 East	County Lea	
Actual Footage Location of Well: 660 feet from the West line and 1980 feet from the South line					
Ground Level Elev. 3595.5	Producing Formation Bone Springs		Pool Burninsteel Bone Spring Wildcat	Dedicated Acreage 160 40	

1. Outline the acreage dedicated to the subject well by colored pencil or hachure marks on the plat below.
2. If more than one lease is dedicated to the well, outline each and identify the ownership thereof (both as to working interest and royalty).
3. If more than one lease of different ownership is dedicated to the well, have the interests of all owners been consolidated by communitization, unitization, force-pooling, etc?

☐ Yes ☐ No If answer is "yes," type of consolidation _____

If answer is "no," list the owners and tract descriptions which have actually been consolidated. (Use reverse side of this form if necessary.) _____

No allowable will be assigned to the well until all interests have been consolidated (by communitization, unitization, forced-pooling, or otherwise) or until a non-standard unit, eliminating such interests, has been approved by the Commission.



CERTIFICATION

I hereby certify that the information contained herein is true and complete to the best of my knowledge and belief.

D. A. Krawietz

Name

D. A. Krawietz

Position

Engineer

Company

Saba Energy, Inc.

Date

10-10-90

I hereby certify that the well location shown on this plat was plotted from field notes of actual surveys made by me or under my supervision, and that the same is true and correct to the best of my knowledge and belief.

Date Surveyed

October 5, 1979

Registered Professional Engineer

and/or Land Surveyor

John W. West

Certificate No. **John W. West**

676

Ronald J. Eidson 3239

0 330 660 990 1320 1650 1980 2310 2640 2970 3300 3630 3960 4290 4620 4950 5280 5610 5940 6270 6600

RECEIVED

OCT 12 1990

CIB
HOBBS OFFICE