

**NEW MEXICO OIL CONSERVATION COMMISSION
WELL LOCATION AND ACREAGE DEDICATION PLAT**

Form C-102
Supersedes C-128
Effective 1-1-65

All distances must be from the outer boundaries of the Section.

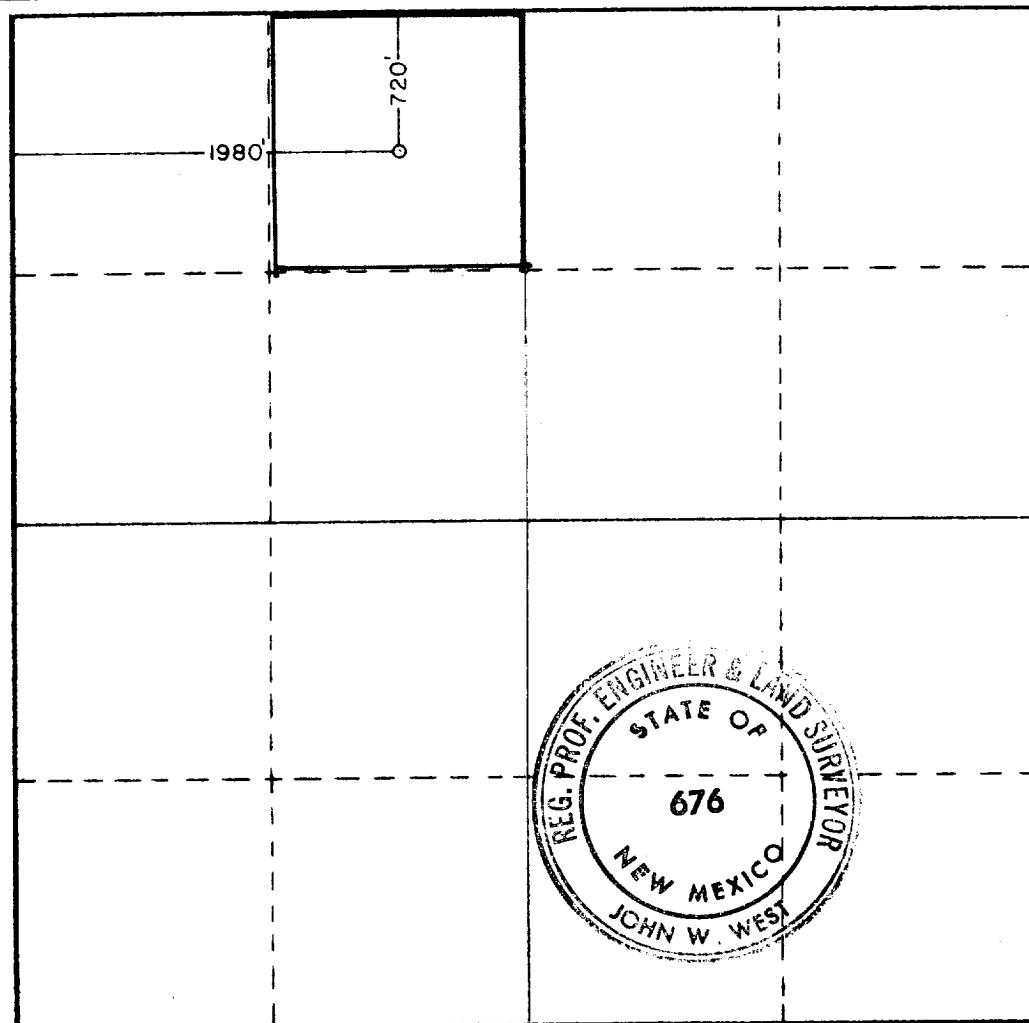
Operator Zia Energy, Inc.,			Lease Federal		Well No. 3
Unit Letter C	Section 17	Township 22 South	Range 37 East	County Lea	
Actual Footage Location of Well: 720 feet from the North line and 1980 feet from the West line					
Ground Level Elev. 3402.3	Producing Formation San Andres		Pool Eunice San Andres-Southwest		Dedicated Acreage: 40 Acres

1. Outline the acreage dedicated to the subject well by colored pencil or hachure marks on the plat below.
2. If more than one lease is dedicated to the well, outline each and identify the ownership thereof (both as to working interest and royalty).
3. If more than one lease of different ownership is dedicated to the well, have the interests of all owners been consolidated by communitization, unitization, force-pooling, etc?

☐ Yes ☐ No If answer is "yes," type of consolidation _____

If answer is "no," list the owners and tract descriptions which have actually been consolidated. (Use reverse side of this form if necessary.) _____

No allowable will be assigned to the well until all interests have been consolidated (by communitization, unitization, forced-pooling, or otherwise) or until a non-standard unit, eliminating such interests, has been approved by the Commission.



CERTIFICATION

I hereby certify that the information contained herein is true and complete to the best of my knowledge and belief.

Name Mr. Nelson
 Position Engineer
 Company Zia Energy, Inc.
 Date 12/17/80

I hereby certify that the well location shown on this plat was plotted from field notes of actual surveys made by me or under my supervision, and that the same is true and correct to the best of my knowledge and belief.

Date Surveyed September 3, 1980
 Registered Professional Engineer and/or Land Surveyor

John W. West
 Certificate No. JOHN W. WEST 676
PATRICK A. ROMERO 6863
Ronald J. Eidson 3239

0 330 660 990 1320 1650 1980 2310 2640 2970 3300 3630 3960

RECEIVED
JAN 20 1981
DEPARTMENT OF

173