

All distances must be from the outer boundaries of the Section.

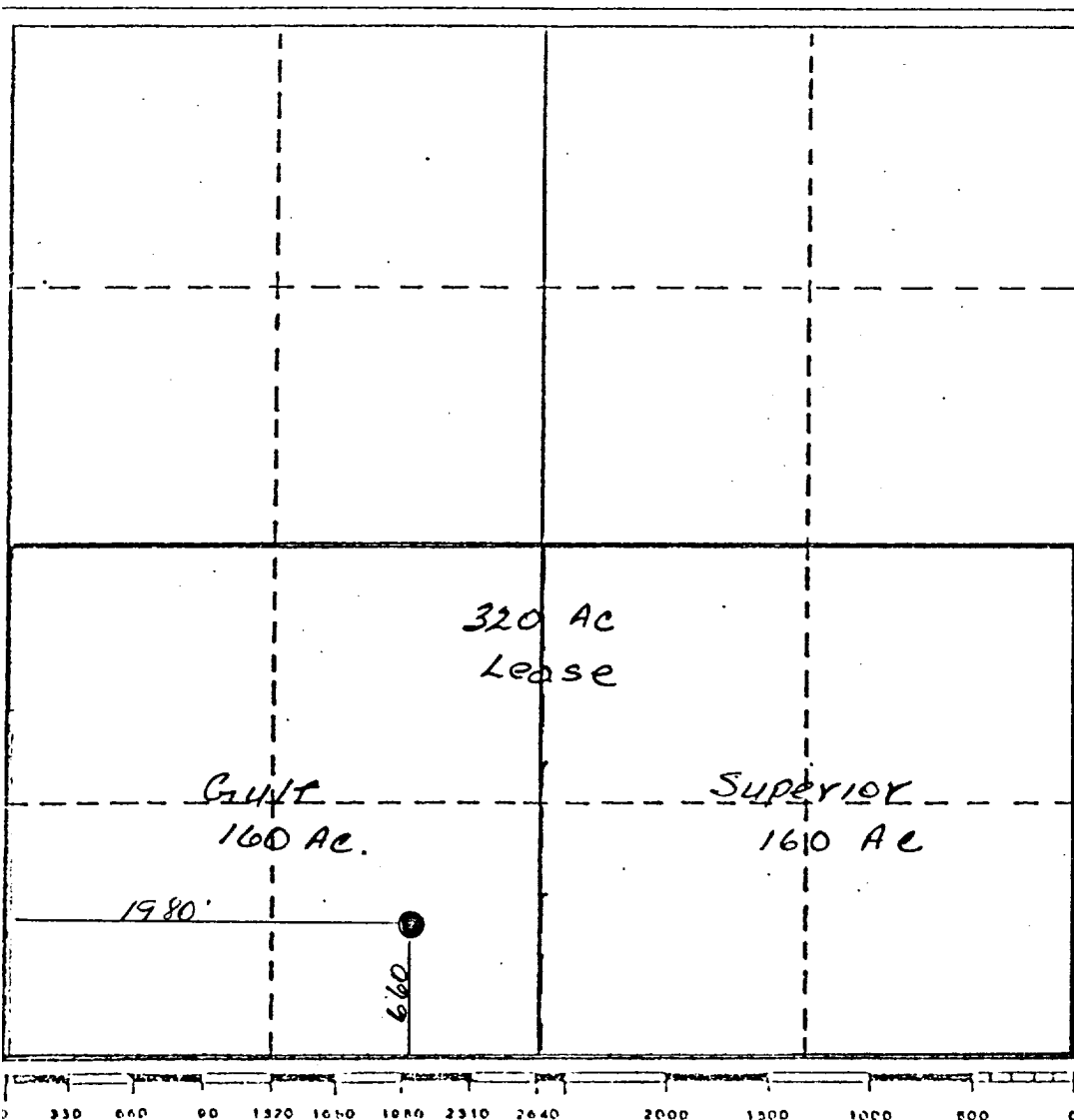
Operator The Superior Oil Company			Lease Triste Draw Federal Gulf		Well No. 1
Unit Letter MN	Section 11	Township 23S	Range 32E	County Lea	
Actual Footage Location of Well: 660 feet from the South line and 1980 feet from the West line					
Ground Level Elev. 3728' GR	Producing Formation Delaware		Pool Wildcat		Dedicated Acreage: 320 Acres

1. Outline the acreage dedicated to the subject well by colored pencil or hatchure marks on the plat below.
2. If more than one lease is dedicated to the well, outline each and identify the ownership thereof (both as to working interest and royalty).
3. If more than one lense of different ownership is dedicated to the well, have the interests of all owners been consolidated by communitization, unitization, force-pooling, etc?

☒ Yes ☐ No If answer is "yes," type of consolidation Communitization

If answer is "no," list the owners and tract descriptions which have actually been consolidated. (Use reverse side of this form if necessary.)

No allowable will be assigned to the well until all interests have been consolidated (by communitization, unitization, forced-pooling, or otherwise) or until a non-standard unit, eliminating such interests, has been approved by the Division.



CERTIFICATION

I hereby certify that the information contained herein is true and complete to the best of my knowledge and belief.

G. E. Tate
Name
G. E. Tate

Position
Division Operations Supt.

Company
The Superior Oil Company

Date
6-28-83

I hereby certify that the well location shown on this plat was plotted from field notes of actual surveys made by me or under my supervision, and that the same is true and correct to the best of my knowledge and belief.

10-14-81

Date Surveyed
J. W. West

Registered Professional Engineer and/or Land Surveyor

O/S J. W. West

Certificate No.
676