

NO. OF COPIES RECEIVED		
DISTRIBUTION		
SANTA FE		
FILE		
U.S.G.S.		
LAND OFFICE		
OPERATOR		

Form C-101
Revised 1-1-65

5A. Indicate Type of Lease

STATE	<input checked="" type="checkbox"/>	FEE	<input type="checkbox"/>
-------	-------------------------------------	-----	--------------------------

5. State Oil & Gas Lease No.

V - 732

1a. Type of Work				7. Unit Agreement Name			
b. Type of Well OIL WELL <input checked="" type="checkbox"/> GAS WELL <input type="checkbox"/> OTHER <input type="checkbox"/> DRILL <input checked="" type="checkbox"/> DEEPEN <input type="checkbox"/> PLUG BACK <input type="checkbox"/>				8. Farm or Lease Name			
2. Name of Operator Exxon Corporation				9. Well No. 1			
3. Address of Operator Post Office Box 1600, Midland, Texas 79702				10. Field and Pool, or Wildcat Wildcat-Bone Spring Gruz (Delaware)			
4. Location of Well UNIT LETTER I LOCATED 1980 FEET FROM THE South LINE AND 660 FEET FROM THE East LINE OF SEC. 18 TWP. 23S RGE. 33E NMPM				12. County Lea			
				19. Proposed Depth 9500'			
				19A. Formation Bone Spring Delaware			
21. Elevations (Show whether DF, RT, etc.) 3705' GR				21A. Kind & Status Plug. Bond Blanket		20. Rotary or C.T. Rotary	
21B. Drilling Contractor Unknown				22. Approx. Date Work will start May, 1983			

SIZE OF HOLE	SIZE OF CASING	WEIGHT PER FOOT	SETTING DEPTH	SACKS OF CEMENT	EST. TOP
26"	20"	94#	40'	25 Sx. Redimix	Surface
17 1/2"	13 3/8"	61#	600'	500 Sx.	Surface
11"	8 5/8"	24#, 32#	5000'	700 Sx.	Tie to Surf. Csg.
7 7/8"	5 1/2"	17#	9500'	700 Sx.	Tie into Int.Csg.

Mud:	0-600'	FW	8.4-8.6	ppg
	600-5000'	CBW	8.8-9.5	ppg
	5000-9500'	CBW	8.8-9.2	ppg

13 3/8"/Type II-C/3000 psi BOP
8 5/8"/Type II-B/3000 psi BOP

APPROVAL VALID FOR 180 DAYS
PERMIT EXPIRES 11/16/83
UNLESS DRILLING UNDERWAY

IN ABOVE SPACE DESCRIBE PROPOSED PROGRAM: IF PROPOSAL IS TO DEEPEN OR PLUG BACK, GIVE DATA ON PRESENT PRODUCTIVE ZONE AND PROPOSED NEW PRODUCTIVE ZONE. GIVE BLOWOUT PREVENTER PROGRAM, IF ANY.

I hereby certify that the information above is true and complete to the best of my knowledge and belief.

Signed Neloa Knippling Title Unit Head Date May 11, 1983

(This space for State Use)

**ORIGINAL SIGNED BY EDDIE SEAY
OIL & GAS INSPECTOR**

APPROVED BY _____ TITLE _____ DATE MAY 19 1969

CONDITIONS OF APPROVAL, IF ANY:

Exxon Lse. No. _____

NEW MEXICO OIL CONSERVATION COMMISSION

Form C-102
Supersedes C-128
Effective 1-1-65

State Lse. No. _____

WELL LOCATION AND ACREAGE DEDICATION PLAT

Federal Lse. No. _____

All distances must be from the outer boundaries of the Section.

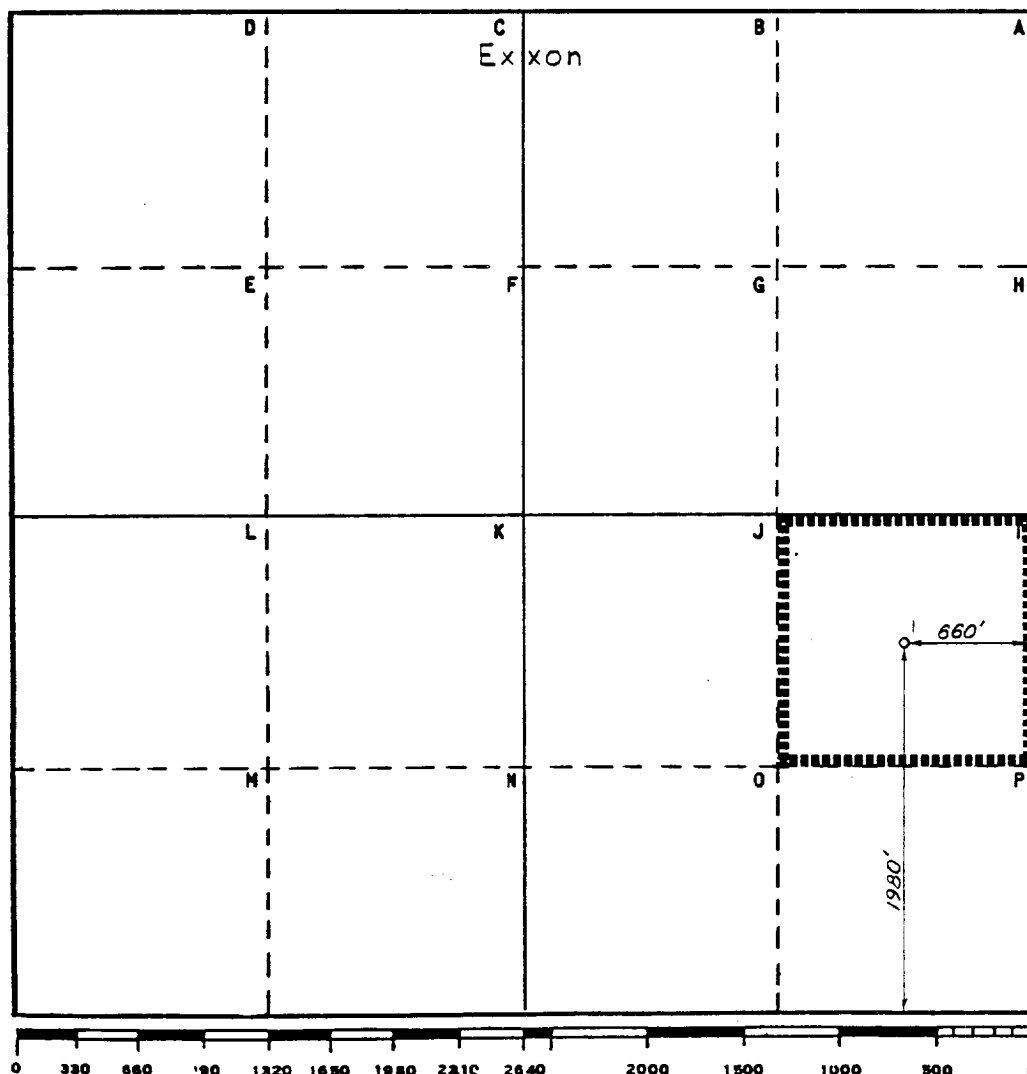
Operator Exxon Corporation			Lease New Mexico "DL" State		Well No. 1
Unit Letter 1	Section 18	Township 23S	Range 33E	County Lea	
Actual Footage Location of Well: 1980 feet from the South line and 660 feet from the East line					
Ground Level Elev: 3705'	Producing Formation Bone Spring		Pool Wildcat	Dedicated Acreage: 40 Acres	

1. Outline the acreage dedicated to the subject well by colored pencil or hatchure marks on the plat below.
2. If more than one lease is dedicated to the well, outline each and identify the ownership thereof (both as to working interest and royalty).
3. If more than one lease of different ownership is dedicated to the well, have the interests of all owners been consolidated by communitization, unitization, force-pooling, etc?

☐ Yes ☐ No If answer is "yes," type of consolidation _____

If answer is "no," list the owners and tract descriptions which have actually been consolidated. (Use reverse side of this form if necessary.) _____

No allowable will be assigned to the well until all interests have been consolidated (by communitization, unitization, forced-pooling, or otherwise) or until a non-standard unit, eliminating such interests, has been approved by the Commission.



CERTIFICATION

I hereby certify that the information contained herein is true and complete to the best of my knowledge and belief.

Name

Position

UNIT HEAD

Company Exxon Corporation
Box 1600 Midland, Texas

Date

5-11-83

I hereby certify that the well location shown on this plat was plotted from field notes of actual surveys made by me or under my supervision and that the same is true and correct to the best of my knowledge and belief.

Date Surveyed

5-4-83

Registered Professional Engineer
and/or Land Surveyor

Certificate No.

6157

27 Miles E of Loving, New Mexico

C.E. Sec. File No. WA-8092

RECEIVED
MAY 16 1983
O.C.D.
HOBBS OFFICE

BLOWOUT PREVENTER SPECIFICATION
EQUIPMENT DESCRIPTION

TYPE II-B

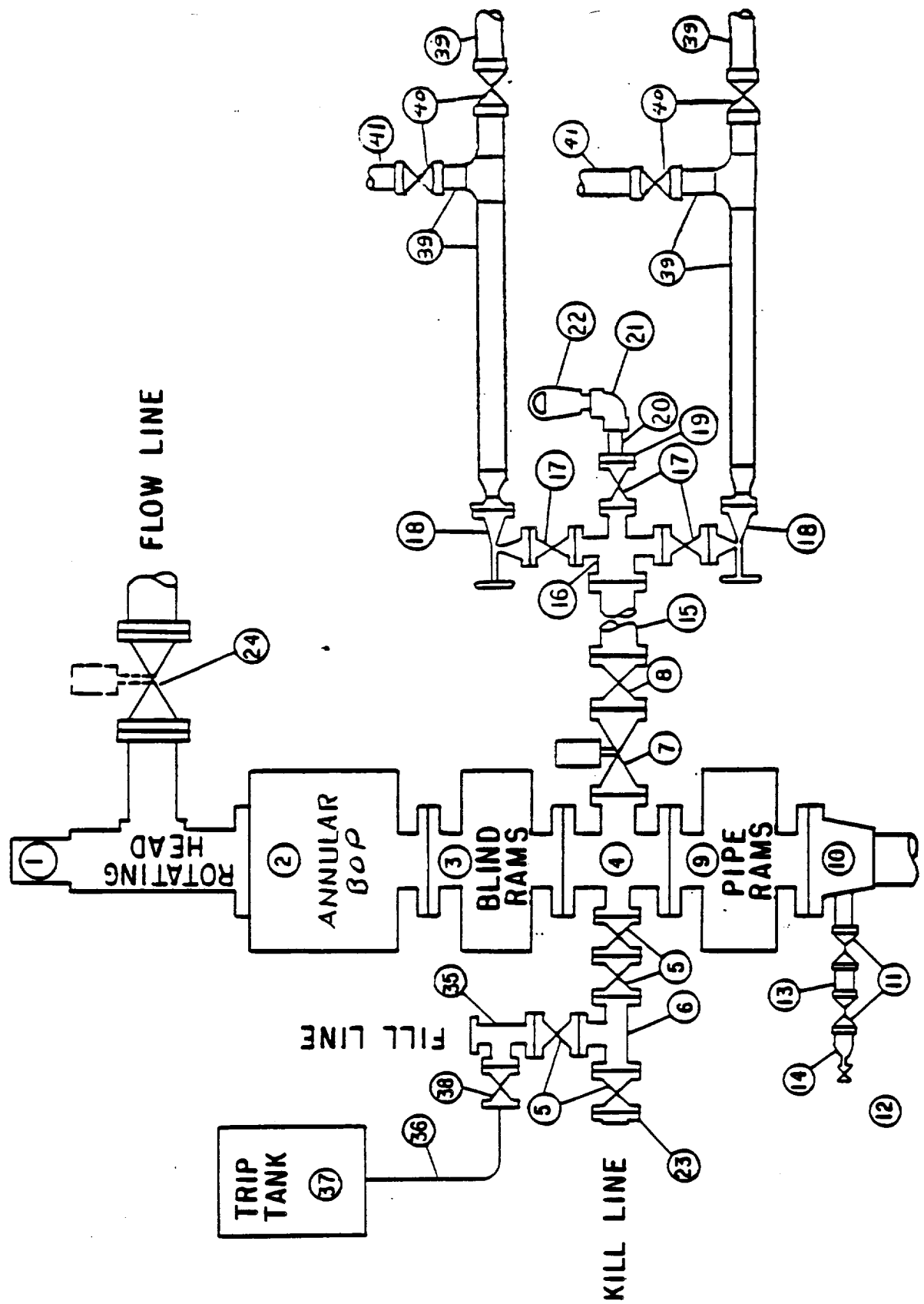
All equipment should be at least 3000 psi WP or higher unless otherwise specified.

1. Rotating BOP.
2. Hydril or Shaffer bag type preventer.
3. Ram type pressure operated blowout preventer with blind rams.
4. Flanged spool with one 4-inch and one 2-inch (minimum) outlet.
5. 2-inch (minimum) flanged plug or gate valve.
6. 2-inch by 2-inch by 2-inch (minimum) flanged tee.
7. 4-inch pressure operated gate valve.
8. 4-inch flanged gate or plug valve.
9. Ram type pressure operated blowout preventer with pipe rams.
10. Flanged type casing head with one side outlet (furnished by Exxon).
11. 2-inch threaded (or flanged) plug or gate valve (furnished by Exxon).
Flanged on 5000# WP, threaded on 3000# WP or less.
12. Needle valve (furnished by Exxon).
13. 2-inch nipple (furnished by Exxon).
14. Tapped bull plug (furnished by Exxon).
15. 4-inch flanged spacer spool.
16. 4-inch by 2-inch by 2-inch by 2-inch flanged cross.
17. 2-inch flanged plug or gate valve.
18. 2-inch flanged adjustable choke.
19. 2-inch threaded flange.
20. 2-inch XXH nipple.
21. 2-inch forged steel 90° Ell.
22. Cameron (or equal.) threaded pressure gage.
23. Threaded flange.
24. 6-inch manual or pressure operated gate valve.
35. 2-inch flanged tee.
36. 3-inch (minimum) hose. (Furnished by Exxon).
37. Trip tank. (Furnished by Exxon).
38. 2-inch flanged plug or gate valve.
39. 2-1/2-inch pipe, 300' to pit, anchored.
40. 2-1/2-inch SE valve.
41. 2-1/2-inch line to steel pit or separator.

NOTES:

1. Items 3, 4 and 9 may be replaced with double ram type preventer with side outlets between the rams.
2. The two valves next to the stack on the fill and kill line to be closed unless drill string is being pulled.
3. Kill line is for emergency use only. This connection shall not be used for filling.
4. Replacement pipe rams and blind rams shall be on location at all times.
5. Only type U, LWS and QRC ram type preventers with secondary seals are acceptable for 5000 psi-WP and higher BOP stacks.
6. Type E ram-type BOP's with factory modified side outlets may be used on 3000 psi and lower WP BOP stacks.

MIDLAND DRILLING ORGANIZATION
BLOWOUT PREVENTER SPECIFICATION
 TYPE II - B



RECEIVED
MAY 16 1983
O.C.D.
HOBBS OFFICE

BLOWOUT PREVENTER SPECIFICATION
EQUIPMENT DESCRIPTION

TYPE II-C

All equipment should be at least 3000 psi WP or higher unless otherwise specified.

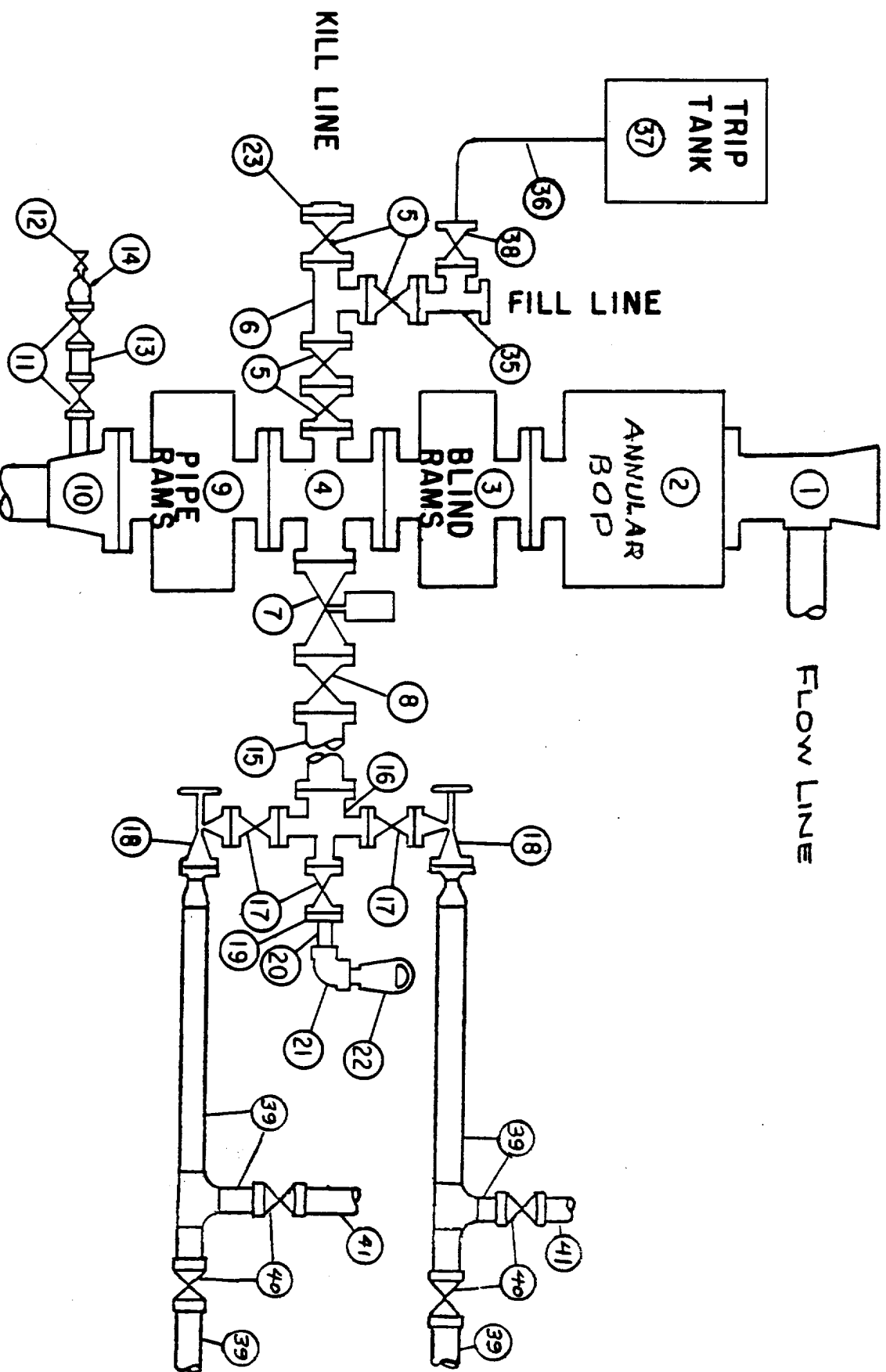
1. Bell nipple.
2. Hydril or Shaffer bag type preventer.
3. Ram type pressure operated blowout preventer with blind rams.
4. Flanged spool with one 4-inch and one 2-inch (minimum) outlet.
5. 2-inch (minimum) flanged plug or gate valve.
6. 2-inch by 2-inch by 2-inch (minimum) flanged tee.
7. 4-inch pressure operated gate valve.
8. 4-inch flanged gate or plug valve.
9. Ram type pressure operated blowout preventer with pipe rams.
10. Flanged type casing head with one side outlet (furnished by Exxon).
11. 2-inch threaded (or flanged) plug or gate valve (furnished by Exxon).
Flanged on 5000# WP, threaded on 3000# WP or less.
12. Needle valve (furnished by Exxon).
13. 2-inch nipple (furnished by Exxon).
14. Tapped bull plug (furnished by Exxon).
15. 4-inch flanged spacer spool.
16. 4-inch by 2-inch by 2-inch by 2-inch flanged cross.
17. 2-inch flanged plug or gate valve.
18. 2-inch flanged adjustable choke.
19. 2-inch threaded flange.
20. 2-inch XXH nipple.
21. 2-inch forged steel 90° Ell.
22. Cameron (or equal.) threaded pressure gage.
23. Threaded flange.
35. 2-inch flanged tee.
36. 3-inch (minimum) hose. (Furnished by Exxon).
37. Trip tank. (Furnished by Exxon).
38. 2-inch flanged plug or gate valve.
39. 2-1/2-inch pipe, 300' to pit, anchored.
40. 2-1/2-inch SE valve.
41. 2-1/2-inch line to steel pit or separator.

NOTES:

1. Items 3, 4 and 9 may be replaced with double ram type preventer with side outlets between the rams.
2. The two valves next to the stack on the fill and kill line to be closed unless drill string is being pulled.
3. Kill line is for emergency use only. This connection shall not be used for filling.
4. Replacement pipe rams and blind rams shall be on location at all times.
5. Only type U, LWS and QRC ram type preventers with secondary seals are acceptable for 5000 psi WP and higher BOP stacks.
6. Type E ram-type BOP's with factory modified side outlets may be used on 3000 psi or lower WP BOP stacks.

RECEIVED
MAY 16 1983
O.C.D.
HOBBS OFFICE

MIDLAND DRILLING ORGANIZATION BLOWOUT PREVENTER SPECIFICATION TYPE II - C



RECEIVED
MAY 16 1983
O.C.D.
HOBBS OFFICE

FILE