

NO. OF COPIES RECEIVED	
DISTRIBUTION	
SANTA FE	
FILE	
U.S.G.S.	
LAND OFFICE	
OPERATOR	

API No.

5A. Indicate Type of Lease
STATE ☐ FEDERAL ☒

5. State Oil & Gas Lease No.

APPLICATION FOR PERMIT TO DRILL, DEEPEN, OR PLUG BACK

1a. Type of Work
DRILL ☒ DEEPEN ☐ PLUG BACK ☐
b. Type of Well
OIL WELL ☒ GAS WELL ☐ OTHER ☐
SINGLE ZONE ☒ MULTIPLE ZONE ☐

7. Unit Agreement Name

8. Farm or Lease Name
Sims

2. Name of Operator
Phillips Petroleum Company

9. Well No.
10

3. Address of Operator
Room 401, 4001 Penbrook Street, Odessa, Texas 79762

10. Field and Pool, or Wildcat
~~Undesignated~~
Pre-Cambrian

4. Location of Well
UNIT LETTER E LOCATED 1980 FEET FROM THE north LINE
AND 840 FEET FROM THE west LINE OF SEC. 24 TWP. 22-S RGE. 37-E NMPM

12. County
Lea

19. Proposed Depth 8,100'
19A. Formation Pre-Cambrian
20. Rotary or C.T. Rotary

21. Elevations (Show whether DB, KT, etc.) 3315.4 GL (Unprepared)
21A. Kind & Status Plug. Bond blanket
21B. Drilling Contractor Advise later
22. Approx. Date Work will start Upon approval

PROPOSED CASING AND CEMENT PROGRAM

SIZE OF HOLE	SIZE OF CASING	WEIGHT PER FOOT	SETTING DEPTH	SACKS OF CEMENT	EST. TOP
17-1/2"	13-3/8"	48#, H-40, ST&C	1150'	600 sx TLW w/10% Diacel D, 3# pr sx gilsonite, 4% CaCl ₂ + 1/4#/sx Cellophane followed by 200 sx Class "C" w/2% CaCl ₂ . Circ to surface.	
**11"	8-5/8"	32#, 24# K-55, ST&C	3000'	Circ to surface in two stages. 1st stage. 650 sx Class "H" w/2% CaCl ₂ + 1/4# per sx Cellophane. 2nd stage. 600 sx Class "H" w/2% CaCl ₂ .	
7-7/8"	5-1/2"	15.5# K-55 ST&C	8100'	Circ to surface in two stages. 1st stage. Caliper volume + 30% excess using Class "C". Followed w/200 sx Class "C" w/2% CaCl ₂ . 2nd stage. Caliper volume + 30% excess using Class "C". Followed w/100 sx Class "C" Neat.	

**If necessary to control salt water flow.

Use mud additives as required for control.

BOP EQUIPMENT: 3000 PSI per PPCO BOP Standards. (See Figure No. 7 attached)

IN ABOVE SPACE DESCRIBE PROPOSED PROGRAM: IF PROPOSAL IS TO DEEPEN OR PLUG BACK, GIVE DATA ON PRESENT PRODUCTIVE ZONE AND PROPOSED NEW PRODUCE ZONE. GIVE BLOWOUT PREVENTER PROGRAM, IF ANY.

I hereby certify that the information above is true and complete to the best of my knowledge and belief.

Signed H. P. Smith Jr. W. J. Mueller Senior Engineering Specialist Date August 10 1983

(This space for State Use)
ORIGINAL SIGNED BY JERRY SEXTON
DISTRICT I SUPERVISOR

AUG 12 1983

APPROVED BY _____ TITLE _____ DATE _____

CONDITIONS OF APPROVAL, IF ANY:

APPROVAL VALID FOR 180 DAYS
PERMIT EXPIRES 2/12/84
UNLESS DRILLING UNDERWAY

NEW MEXICO OIL CONSERVATION COMMISSION
WELL LOCATION AND ACREAGE DEDICATION PLAT

Form C-101
Supersedes C-128
Effective 1-1-65

All distances must be from the outer boundaries of the Section.

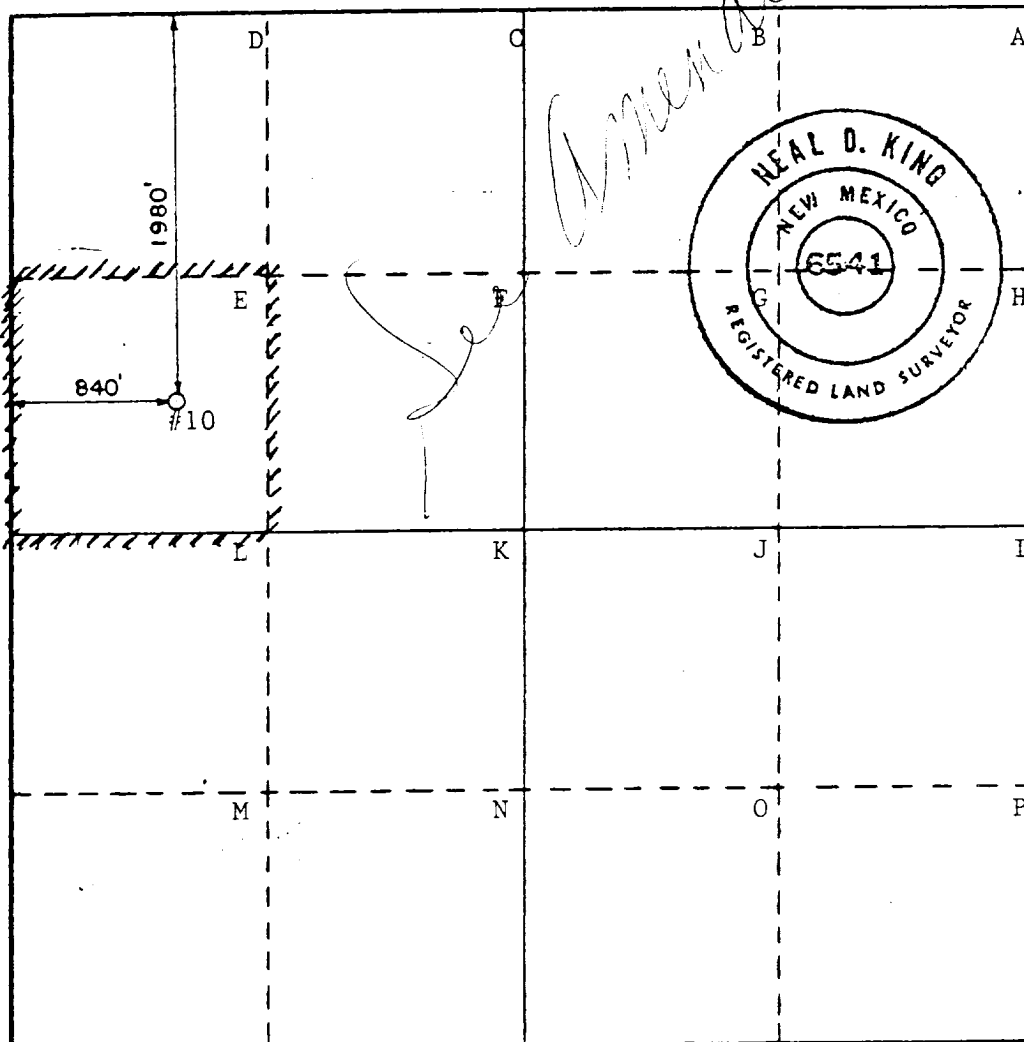
Operator Phillips Petroleum Co.		Lease Sims		Well No. 10
Unit Letter E	Section 24	Township 22 South	Range 37 East	County Lea
Actual Footage Location of Well: 1980 feet from the North line and 840 feet from the West line				
Ground Level Elev. 3315.4	Producing Formation Pre - Cambrian	Pool Undesignated	Dedicated Acreage: 40 Acres	

- Outline the acreage dedicated to the subject well by colored pencil or hachure marks on the plat below.
- If more than one lease is dedicated to the well, outline each and identify the ownership thereof (both as to working interest and royalty).
- If more than one lease of different ownership is dedicated to the well, have the interests of all owners been consolidated by communitization, unitization, force-pooling, etc?

☐ Yes ☐ No If answer is "yes," type of consolidation _____

If answer is "no," list the owners and tract descriptions which have actually been consolidated. (Use reverse side of this form if necessary.) _____

No allowable will be assigned to the well until all interests have been consolidated (by communitization, unitization, forced-pooling, or otherwise) or until a non-standard unit, eliminating such interests, has been approved by the Commission.



CERTIFICATION

I hereby certify that the information contained herein is true and complete to the best of my knowledge and belief.

W. J. Mueller
Name

Senior Engineering Specialist

Position

Phillips Petroleum Company

Company

January 28, 1983

Date

I hereby certify that the well location shown on this plat was plotted from field notes of actual surveys made by me or under my supervision, and that the same is true and correct to the best of my knowledge and belief.

December 14, 1982

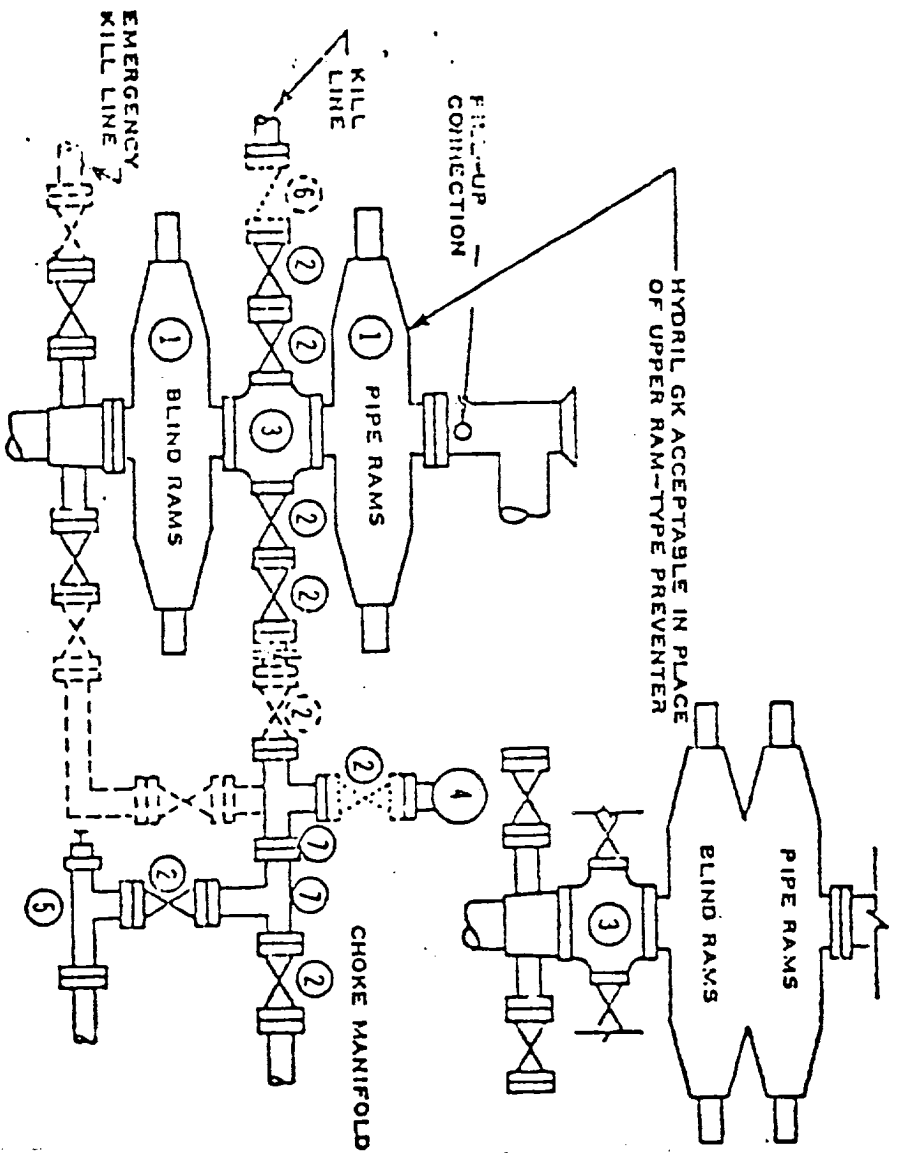
Date Surveyed

Neal D. King
Registered Professional Engineer
and/or Land Surveyor

6541

Certificate No.

DOUBLE PREVENTER OPTION



- ① SERIES 900 RAM-TYPE BOP
- ② 2" SERIES 900 VALVE
- ③ SERIES 900 DRILLING SPOOL
- ④ 2" MUD PRESSURE GAUGE
- ⑤ 2" SERIES 900 CHOKE
- ⑥ 2" SERIES 900 CHECK VALVE
- ⑦ 2" SERIES 900 STEEL TEE

NOTES:

1. 3000 PSI WP CLAMP HUBS MAY BE SUBSTITUTED FOR FLANGES
2. VALVES MAY BE EITHER HAND OR POWER OPERATED BUT, IF POWER OPERATED, THE VALVES FLANGED TO THE BOP RUN MUST BE CAPABLE OF BEING OPENED AND CLOSED MANUALLY OR CLOSE ON POWER FAILURE AND BE CAPABLE OF BEING OPENED MANUALLY

..... OPTIONAL EQUIPMENT

PHILLIPS PETROLEUM COMPANY

3000 PSI WORKING PRESSURE
BLOWOUT PREVENTER HOOK-UP
(SERIES 900 FLANGES OR BETTER)