

NO. OF COPIES RECEIVED		
DISTRIBUTION		
SANTA FE		
FILE		
U.S.G.S.		
LAND OFFICE		
OPERATOR		

Form C-101  
Revised 1-1-65

SA. Indicate Type of Lease

STATE	<input checked="" type="checkbox"/>	FEE	<input type="checkbox"/>
-------	-------------------------------------	-----	--------------------------

S. State Oil & Gas Lease No.

A-2614

[illegible]

SIZE OF HOLE	SIZE OF CASING	WEIGHT PER FOOT	SETTING DEPTH	SACKS OF CEMENT	EST. TOP
12 1/4"	9 5/8"	32.3	400	200	Surface
8 3/4"	5 1/2"	15.5	3850	950	Surface

Blowout prevention equipment will be 10", 3000 lb. annular preventer, blind rams, and pipe rams with remote controls on the derrick floor.

180  
5-16-84  
UNDERWAY

NSL 1767

IN ABOVE SPACE DESCRIBE PROPOSED PROGRAM: IF PROPOSAL IS TO DEEPEN OR PLUG BACK, GIVE DATA ON PRESENT PRODUCTIVE ZONE AND PROPOSED NEW PRODUCTIVE ZONE. GIVE BLOWOUT PREVENTER PROGRAM, IF ANY.

I hereby certify that the information above is true and complete to the best of my knowledge and belief.

Signed William D. Holmes Title Engineer Date 10-19-83

(This space for State Use)

ORIGINAL SIGNED BY JERRY SEXTON

APPROVED BY DISTRICT SUPERVISOR TITLE \_\_\_\_\_ DATE \_\_\_\_\_

CONDITIONS OF APPROVAL, IF ANY:

NOV 16 1983

NEW MEXICO OIL CONSERVATION COMMISSION  
WELL LOCATION AND ACREAGE DEDICATION PLAT

Form C-102  
Supersedes C-128  
Effective 1-1-65

All distances must be from the outer boundaries of the Section.

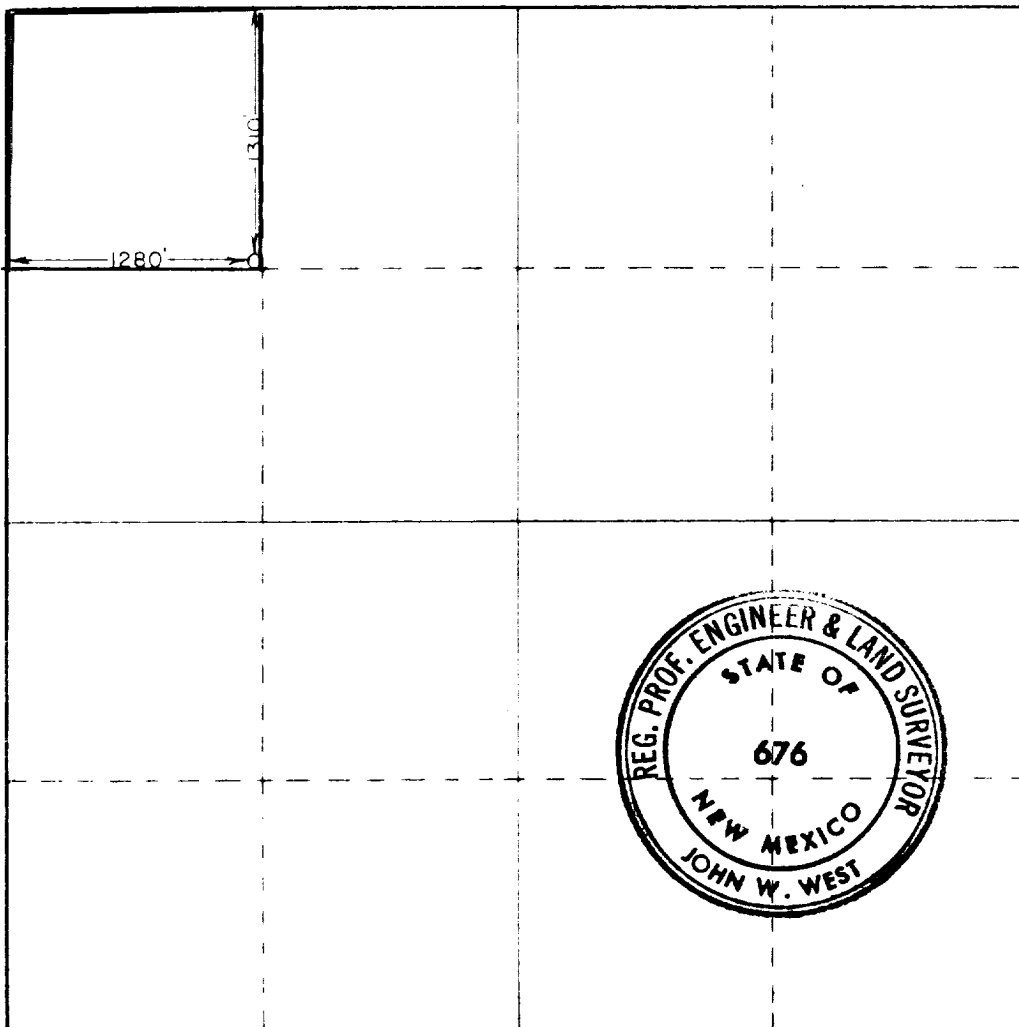
Operator <b>MARATHON OIL CO.</b>			Lease <b>SOUTH EUNICE QUEEN UNIT</b>		Well No. <b>434</b>
Unit Letter <b>D</b>	Section <b>25</b>	Township <b>22 SOUTH</b>	Range <b>36 EAST</b>	County <b>LEA</b>	
Actual Footage Location of Well:					
<b>1310</b> feet from the <b>NORTH</b> line and		<b>1280</b> feet from the <b>WEST</b> line			
Ground Level Elev. <b>3457.8</b>	Producing Formation <b>Seven Rivers - Queen</b>	Pool <b>South Eunice (7 Rivers - Queen)</b>	Dedicated Acreage: <b>40</b> Acres		

- Outline the acreage dedicated to the subject well by colored pencil or hatchure marks on the plat below.
- If more than one lease is dedicated to the well, outline each and identify the ownership thereof (both as to working interest and royalty).
- If more than one lease of different ownership is dedicated to the well, have the interests of all owners been consolidated by communitization, unitization, force-pooling, etc?

☐ Yes ☐ No If answer is "yes," type of consolidation \_\_\_\_\_

If answer is "no," list the owners and tract descriptions which have actually been consolidated. (Use reverse side of this form if necessary.) \_\_\_\_\_

No allowable will be assigned to the well until all interests have been consolidated (by communitization, unitization, forced-pooling, or otherwise) or until a non-standard unit, eliminating such interests, has been approved by the Commission.



CERTIFICATION

I hereby certify that the information contained herein is true and complete to the best of my knowledge and belief.

*William D. Holmes*

William D. Holmes

District Operations Engineer

Marathon Oil Company

10-19-83

I hereby certify that the well location shown on this plat was plotted from field notes of actual surveys made by me or under my supervision and that the same is true and correct to the best of my knowledge and belief.

Date: (Surveyor)

OCTOBER 7, 1983

Registered Professional Engineer and Land Surveyor

*John W. West*

Certificate No. JOHN W. WEST, 676

RONALD J. EIDSON, 3239

RECEIVED  
OCT 26 1983  
O.C.D.  
HOBBS OFFICE

113