

30-025-28448

NO. OF COPIES RECEIVED		
DISTRIBUTION		
SANTA FE		
FILE		
U.S.G.S.		
LAND OFFICE		
OPERATOR		

NEW MEXICO OIL CONSERVATION COMMISSION

Form C-101
Revised 14-65

5A. Indicate Type of Lease STATE <input checked="" type="checkbox"/> REC <input type="checkbox"/>
5. State Oil & Gas Lease No. A-2614
7. Unit Agreement Name South Eunice(7RQ) Unit
8. Farm or Lease Name
9. Well No. 435
10. Field and Pool, or Wildcat Eunice (7RQ) South
12. County Lea
19. Proposed Depth 3820
19A. Formation Seven Riv., Queen
20. Rotary or C.T. Rotary
21. Elevations (Show whether DF, RT, etc.) 3444.9
21A. Kind & Status Plug. Bond Blanket on File
21B. Drilling Contractor N/A
22. Approx. Date Work will start Nov. 1, 1983

APPLICATION FOR PERMIT TO DRILL, DEEPEN, OR PLUG BACK

1a. Type of Work b. Type of Well OIL WELL <input checked="" type="checkbox"/> GAS WELL <input type="checkbox"/> OTHER <input type="checkbox"/> 2. Name of Operator Marathon Oil Company 3. Address of Operator P.O. Box 552, Midland, Texas 79702 4. Location of Well UNIT LETTER M LOCATED 1137 FEET FROM THE West LINE AND 978 FEET FROM THE South LINE OF SEC. 36 TWP. 22S RGE. 36E NMPM	DRILL <input checked="" type="checkbox"/> DEEPEN <input type="checkbox"/> PLUG BACK <input type="checkbox"/> SINGLE ZONE <input checked="" type="checkbox"/> MULTIPLE ZONE <input type="checkbox"/>
23. PROPOSED CASING AND CEMENT PROGRAM	

SIZE OF HOLE	SIZE OF CASING	WEIGHT PER FOOT	SETTING DEPTH	SACKS OF CEMENT	EST. TOP
12 1/4"	9 5/8"	32.3	400'	200	Surface
8 3/4"	5 1/2"	15.5	3820'	950	Surface

BOP PROGRAM

Blowout prevention equipment will be 10", 3000 lb. annular preventer, blind rams, and pipe rams with remote controls on the derrick floor.

APPROVAL VALID FOR 180 DAYS
PERMIT EXPIRES 5-16-84

NSL 1767

IN ABOVE SPACE DESCRIBE PROPOSED PROGRAM: IF PROPOSAL IS TO DEEPEN OR PLUG BACK, GIVE DATA ON PRESENT PRODUCTIVE ZONE AND PROPOSED NEW PRODUCTIVE ZONE. GIVE BLOWOUT PREVENTER PROGRAM, IF ANY.

I hereby certify that the information above is true and complete to the best of my knowledge and belief.

Signed William D. Holmes Title District Operations Engineer Date 10-19-83

(This space for State Use)

ORIGINAL SIGNED BY JERRY SEXTON

NOV 16 1983

APPROVED BY DISTRICT 1 SUPERVISOR TITLE DATE

CONDITIONS OF APPROVAL, IF ANY:

RECEIVED
OCT 26 1983
O.C.D.
HOBBS OFFICE

NEW MEXICO OIL CONSERVATION COMMISSION
WELL LOCATION AND ACREAGE DEDICATION PLAT

Form C-102
Supersedes C-128
Effective 1-1-65

All distances must be from the outer boundaries of the Section

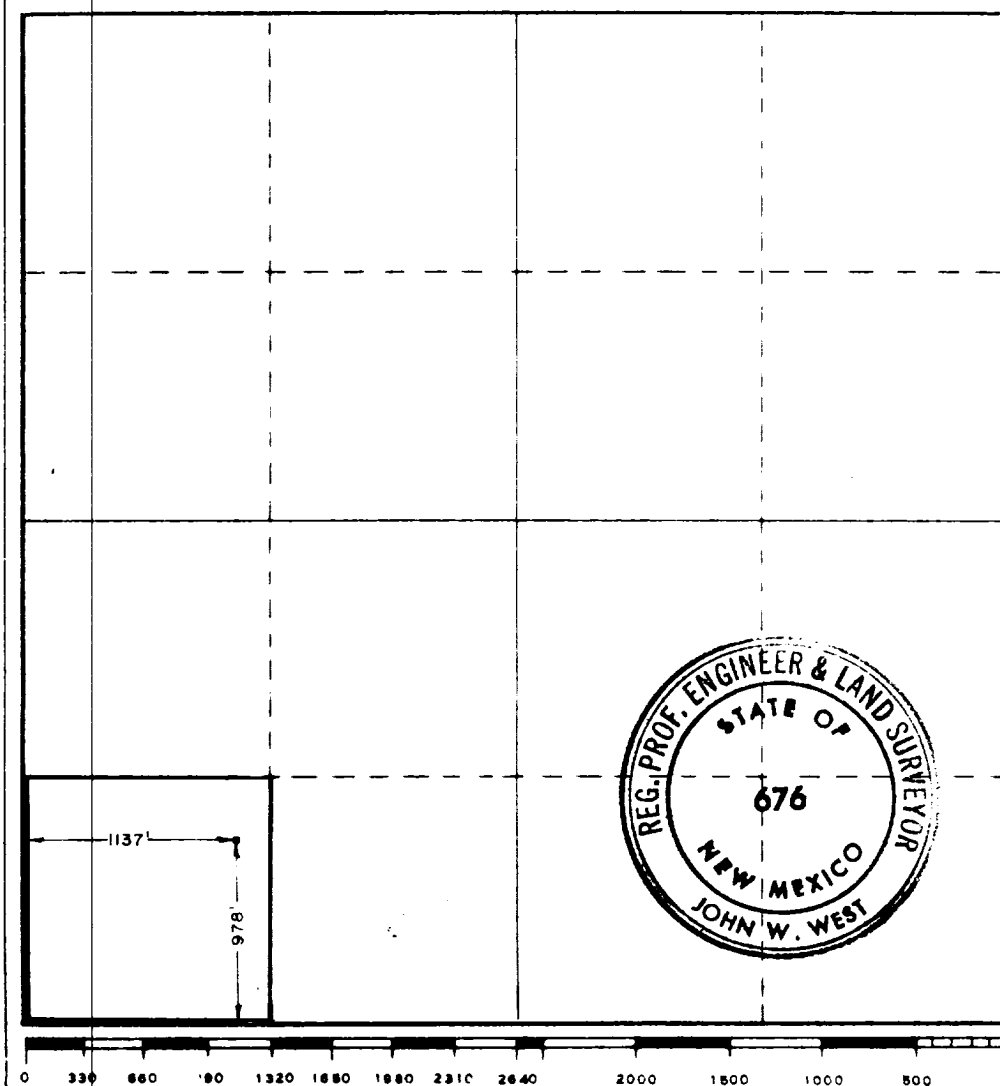
Operator MARATHON OIL CO.		Lease SOUTH EUNICE QUEEN UNIT		Well No. 435
Unit Letter M	Section 36	Township 22 SOUTH	Range 36 EAST	County LEA
Actual Footage Location of Well: 1137 feet from the WEST line and 978 feet from the SOUTH line				
Ground Level Elev. 3444.9	Producing Formation Seven Rivers - Queen	Pool South Eunice (7 Rivers-Queen)	Dedicated Acreage: 40	

1. Outline the acreage dedicated to the subject well by colored pencil or hachure marks on the plat below.
2. If more than one lease is dedicated to the well, outline each and identify the ownership thereof (both as to working interest and royalty).
3. If more than one lease of different ownership is dedicated to the well, have the interests of all owners been consolidated by communitization, unitization, force-pooling, etc?

☐ Yes ☐ No If answer is "yes," type of consolidation _____

If answer is "no," list the owners and tract descriptions which have actually been consolidated. (Use reverse side of this form if necessary.) _____

No allowable will be assigned to the well until all interests have been consolidated (by communitization, unitization, forced-pooling, or otherwise) or until a non-standard unit, eliminating such interests, has been approved by the Commission.



CERTIFICATION

I hereby certify that the information contained herein is true and complete to the best of my knowledge and belief

William D. Holmes

Name

William D. Holmes

Position

District Operations Eng.

Company

Marathon Oil Company

Date

10-19-83

I hereby certify that the well location shown on this plat was plotted from field notes of actual surveys made by me or under my supervision, and that the same is true and correct to the best of my knowledge and belief.

Date Surveyed

10-5-83

Registered Professional Engineer and/or Land Surveyor

John W. West

Certificate No.

John W. West No. 676

RECEIVED
OCT 26 1983
O.C.D.
HOBBS OFFICE

11