

MEXICO OIL CONSERVATION COMMISSION
WELL LOCATION AND ACREAGE DEDICATION PLAT

Form C-102
Supersedes C-128
Effective 4-1-65

All distances must be from the outer boundaries of the Section

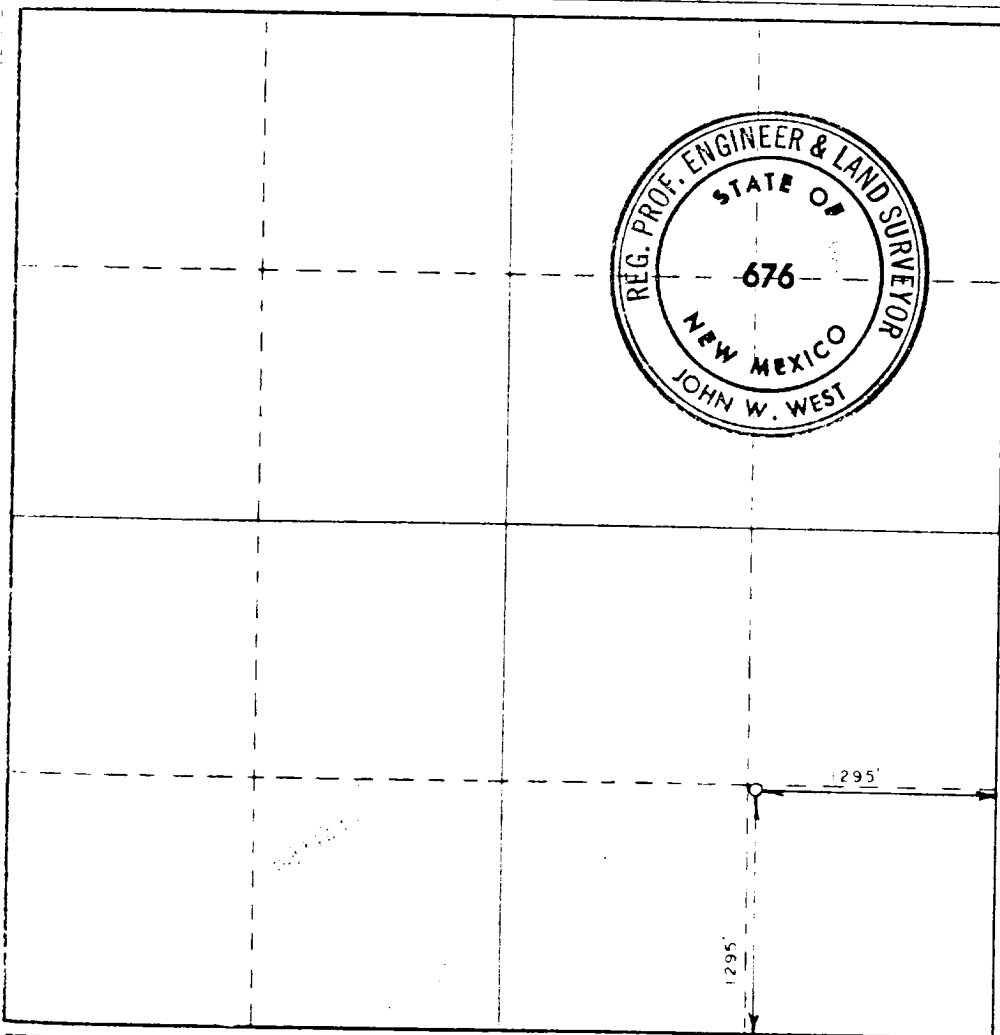
Operator SUN EXPLORATION & PRODUCTION CO.			Lease STATE "A" A/C 1		Well No. 119
Plot Letter P	Section 3	Township 23 SOUTH	Range 36 EAST	County LEA	
Actual Portage Location of Well:					
1295	feet from the	SOUTH	line and	1295	feet from the
					EAST
Well Elev. 3461.1	Producing Formation Seven Rivers/Queen		Foot Langlie-Mattix		Estimated Acreage None-WIW

1. Outline the acreage dedicated to the subject well by colored pencil or hachure marks on the plat below.
2. If more than one lease is dedicated to the well, outline each and identify the ownership thereof (both as to working interest and royalty).
3. If more than one lease of different ownership is dedicated to the well, have the interests of all owners been consolidated by communitization, unitization, force-pooling, etc?

☐ Yes ☐ No If answer is "yes," type of consolidation _____

If answer is "no," list the owners and tract descriptions which have actually been consolidated. (Use reverse side of this form if necessary.) _____

No allowable will be assigned to the well until all interests have been consolidated (by communitization, unitization, forced-pooling, or otherwise) or until a non-standard unit, eliminating such interests, has been approved by the Commission.



CERTIFICATION

I hereby certify that the information contained herein is true and complete to the best of my knowledge and belief.

Maria L. Perez

Maria L. Perez

Sr. Acctng. Asst.

Sun Exploration & Production

Date
11/7/83

I hereby certify that the well location shown on this plat was plotted from field notes of actual surveys made by me or under my supervision, and that the same is true and correct to the best of my knowledge and belief.

Date Surveyed
OCTOBER 26, 1983

Registered Professional Engineer and/or Land Surveyor

John W. West

Certificate No. JOHN W. WEST 676
RONALD J. EIDSON, 3239