

30-025-280

NO. OF COPIES RECEIVED	
DISTRIBUTION	
SANTA FE	
FILE	
U.S.G.S.	
LAND OFFICE	
OPERATOR	

NEW MEXICO OIL CONSERVATION COMMISSION

Form C-101
Revised 1-1-65

5A. Indicate Type of Lease	
STATE <input type="checkbox"/>	FEE <input checked="" type="checkbox"/>
5. State Oil & Gas Lease No.	

APPLICATION FOR PERMIT TO DRILL, DEEPEN, OR PLUG BACK

1a. Type of Work		7. Unit Agreement Name	
b. Type of Well DRILL <input checked="" type="checkbox"/> DEEPEN <input type="checkbox"/> PLUG BACK <input type="checkbox"/> OIL WELL <input type="checkbox"/> GAS WELL <input type="checkbox"/> OTHER <u>DUAL GAS+OIL</u> SINGLE ZONE <input type="checkbox"/> MULTIPLE ZONE <input checked="" type="checkbox"/>		8. Farm or Lease Name <u>DRINKARD NCT-B</u>	
2. Name of Operator <u>GULF OIL CORPORATION</u>		9. Well No. <u>7</u>	
3. Address of Operator <u>P.O. Box 670 HOBBS, NEW MEXICO 88240</u>		10. Field and Pool, or Wildcat <u>BLINEBRY TUBB</u>	
4. Location of Well UNIT LETTER <u>K</u> LOCATED <u>1980</u> FEET FROM THE <u>WEST</u> LINE AND <u>2120'</u> FEET FROM THE <u>SOUTH</u> LINE OF SEC. <u>30</u> TWP. <u>22S</u> RGE. <u>38E</u> NMPM		12. County <u>LEA</u>	
19. Proposed Depth <u>6350</u>		19A. Formation <u>BLINEBRY</u>	
20. Rotary or C.T. <u>ROTARY</u>		21. Elevations (Show whether DF, RT, etc.) <u>3338.2' GLE</u>	
21A. Kind & Status Plug. Bond <u>BLANKET</u>		21B. Drilling Contractor <u>UNKNOWN</u>	
22. Approx. Date Work will start <u>FEBRUARY 15, 1984</u>			

PROPOSED CASING AND CEMENT PROGRAM

SIZE OF HOLE	SIZE OF CASING	WEIGHT PER FOOT	SETTING DEPTH	SACKS OF CEMENT	EST. TOP
14 3/4	10 3/4	40.5	1250	~ 1100 SKS	SURFACE
9 1/2	7	23	6350	~ 1200 SKS	TIE BACK SURFACE

MUD PROGRAM

0-1250' FW SPUD MUD 8.6 - 8.9 ppv 32-38 VLS

1250-6350 SATURATED BRINE STARCH POLYMER 9.8 - 10.1 ppv 29-34 VLS

BOP

DRAWING #1 2000 - 3000 psi WORKING PRESSURE

APPROVAL VALID FOR 180 DAYS
PERMIT EXPIRES 2/1/84
UNLESS DRILLING UNDERWAY

IN ABOVE SPACE DESCRIBE PROPOSED PROGRAM: IF PROPOSAL IS TO DEEPEN OR PLUG BACK, GIVE DATA ON PRESENT PRODUCTIVE ZONE AND PROPOSED NEW PRODUCTIVE ZONE. GIVE BLOWOUT PREVENTER PROGRAM, IF ANY.

I hereby certify that the information above is true and complete to the best of my knowledge and belief.

Signed H. M. Sexton for Title AREA PROD MGR Date 1-27-84

(This space for State Use)

ORIGINAL SIGNED BY JERRY SEXTON

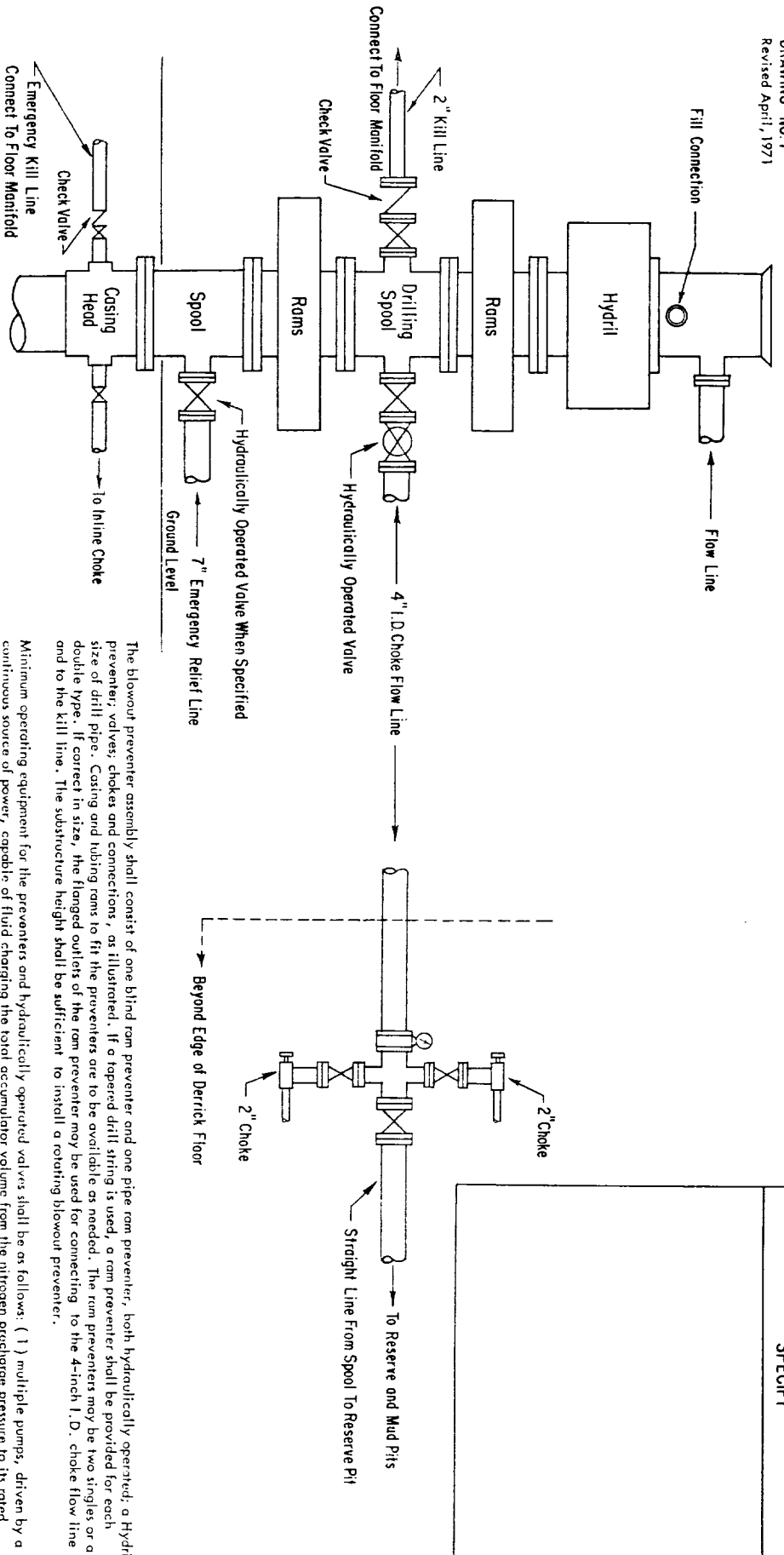
DISTRICT I SUPERVISOR

PROVED BY _____ TITLE _____ DATE _____

CONDITIONS OF APPROVAL, IF ANY:

Until both the unorthodox location and non-standard proration unit have been approved for the Tubb Oil & Gas Pool, the well cannot be produced as a gas well from the Tubb formation

FEB 1 1984



2000-3000 PSI WORKING PRESSURE BOP HOOK-UP FOR LARGE CASINGS

SPECIFY WORKING PRESSURE

The closing manifold and remote closing manifold shall have a separate control for each pressure-operated device. Controls are to be labeled, with control handles to indicate open and closed positions. A pressure reducer and regulator must be provided for operating the Hydril preventer. When requested, a second pressure reducer shall be available to limit operating fluid pressures to ram preventers. Gulf Legion No. 38 hydraulic oil, an equivalent or better, is to be used as the fluid to operate the hydraulic equipment.

The choke manifold, the choke flow line, the choke lines and the relief lines are to be supported by metal stands and adequately anchored. The choke flow line, relief lines and choke lines shall be constructed as straight as possible and without sharp bends. Easy and safe access shall be maintained to the choke manifold. All valves are to be selected for operation in the presence of oil, gas, and drilling fluids. The choke flow line valves and valves of the relief lines connected to the drilling spools and all ram type preventers must be equipped with stem extensions, universal joints if needed, and hand wheels which are to extend beyond the edge of the derrick substructure. All other valves shall be equipped with handles.

The blowout preventer assembly shall consist of one blind ram preventer and one pipe ram preventer, both hydraulically operated; a Hydril preventer; valves, chokes and connections, as illustrated. If a tapered drill string is used, a ram preventer shall be provided for each size of drill pipe. Casing and tubing rams to fit the preventers are to be available as needed. The ram preventers may be two singles or a double type. If correct in size, the flanged outlets of the ram preventer may be used for connecting to the 4-inch I.D. choke flow line and to the kill line. The substructure height shall be sufficient to install a rotating blowout preventer.

Minimum operating equipment for the preventers and hydraulically operated valves shall be as follows: (1) multiple pumps, driven by a continuous source of power, capable of fluid charging the total accumulator volume from the nitrogen precharge pressure to its rated pressure within _____ minutes. Also, the pumps are to be connected to the hydraulic operating system which is to be a closed system. (2) accumulators with a precharge of nitrogen of not less than 750 PSI and connected so as to receive the aforementioned fluid charge. With the charging pumps shut down, the pressurized fluid volume stored in the accumulators shall be sufficient to close all the pressure-operated devices simultaneously within _____ seconds; after closure, the remaining accumulator pressure shall be not less than 1000 PSI with the remaining accumulator fluid volume at least _____ percent of the original. When requested, either an additional source of power, remote and equivalent, is to be available to operate the above pumps; or there shall be additional pumps operated by separate power and equal in performance capabilities.

ADDITIONS - DELETIONS - CHANGES
SPECIFY

NEW MEXICO OIL CONSERVATION COMMISSION
WELL LOCATION AND ACREAGE DEDICATION PLAT

Form O-112
Supersedes O-12H
Effective 1-1-65

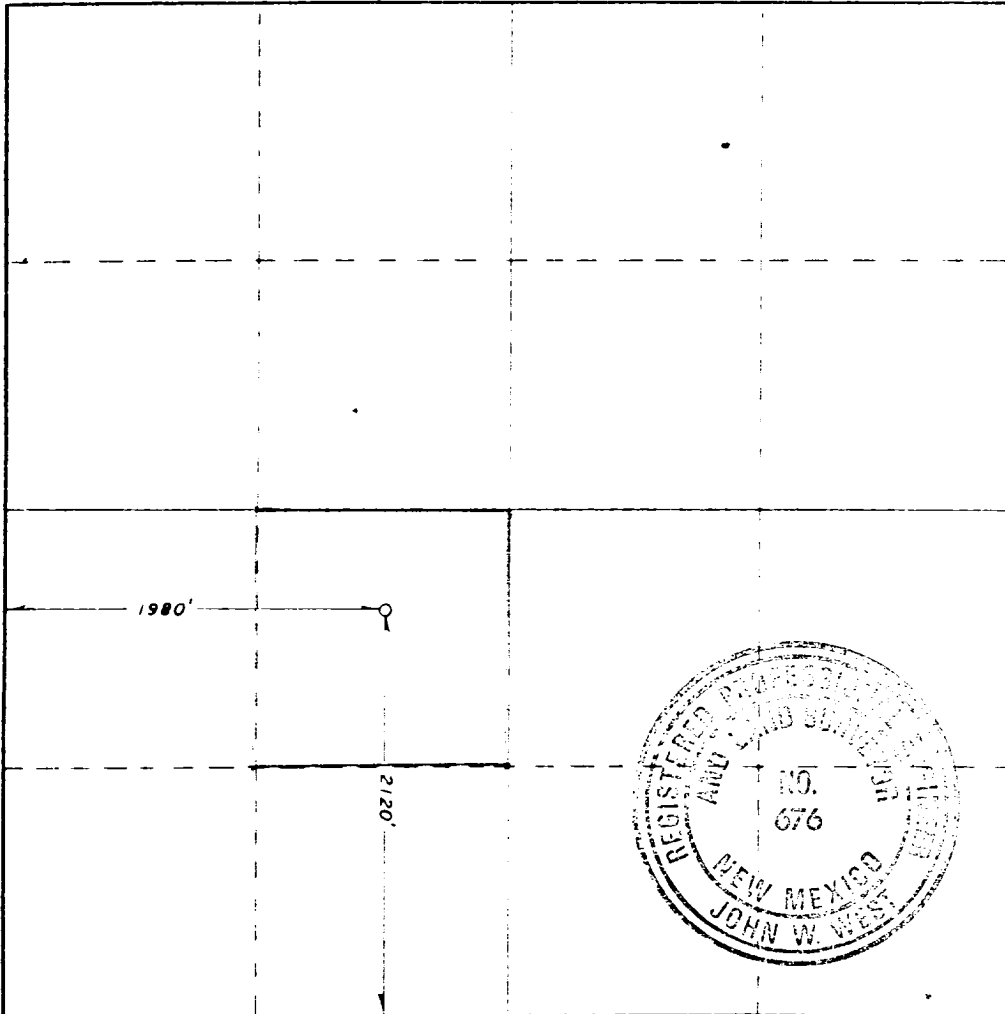
Operator GULF OIL CORP.		Lease DRINKARD NCT-B		Acres 7
Grid Letter K	Section 30	Township 22S	Range 38E	County LEA
Actual Portage Location of Well:				
2120	feet from the SOUTH	line and	1980	feet from the WEST
Ground Level Elev. 3338.2	Producing Formation <i>Blinbury</i>	Foot	<i>Blinbury</i>	Section Area 40

1. Outline the acreage dedicated to the subject well by colored pencil or hashure marks on the plat below.
2. If more than one lease is dedicated to the well, outline each and identify the ownership thereof (both as to working interest and royalty).
3. If more than one lease of different ownership is dedicated to the well, have the interests of all owners been consolidated by communitization, unitization, force-pooling, etc?

☐ Yes ☐ No If answer is "yes," type of consolidation _____

If answer is "no," list the owners and tract descriptions which have actually been consolidated. (Use reverse side of this form if necessary.) _____

No allowable will be assigned to the well until all interests have been consolidated by communitization, unitization, forced-pooling, or otherwise or until a non-standard unit, eliminating such interests, has been approved by the Commission.



CERTIFICATION

I hereby certify that the information contained herein is true and complete to the best of my knowledge and belief.

L. M. Anderson

for **AL ANDERSON**

AREA PROD MGR

GULF OIL CORP

1-27-84

I hereby certify that the well location shown on this plat was plotted from field notes of actual surveys made by me or under my supervision and that the same is true and correct to the best of my knowledge and belief.

1/24/84

Registered Professional Land Surveyor
New Mexico

John W. West
Certificate No. **JOHN W. WEST** 676
RONALD E. LIDSON 3732

**NEW MEXICO OIL CONSERVATION COMMISSION
WELL LOCATION AND ACREAGE DEDICATION PLAT**

Form C-122
Supersedes C-124
Effective 10-1-85

All distances must be from the outer boundaries of the Section

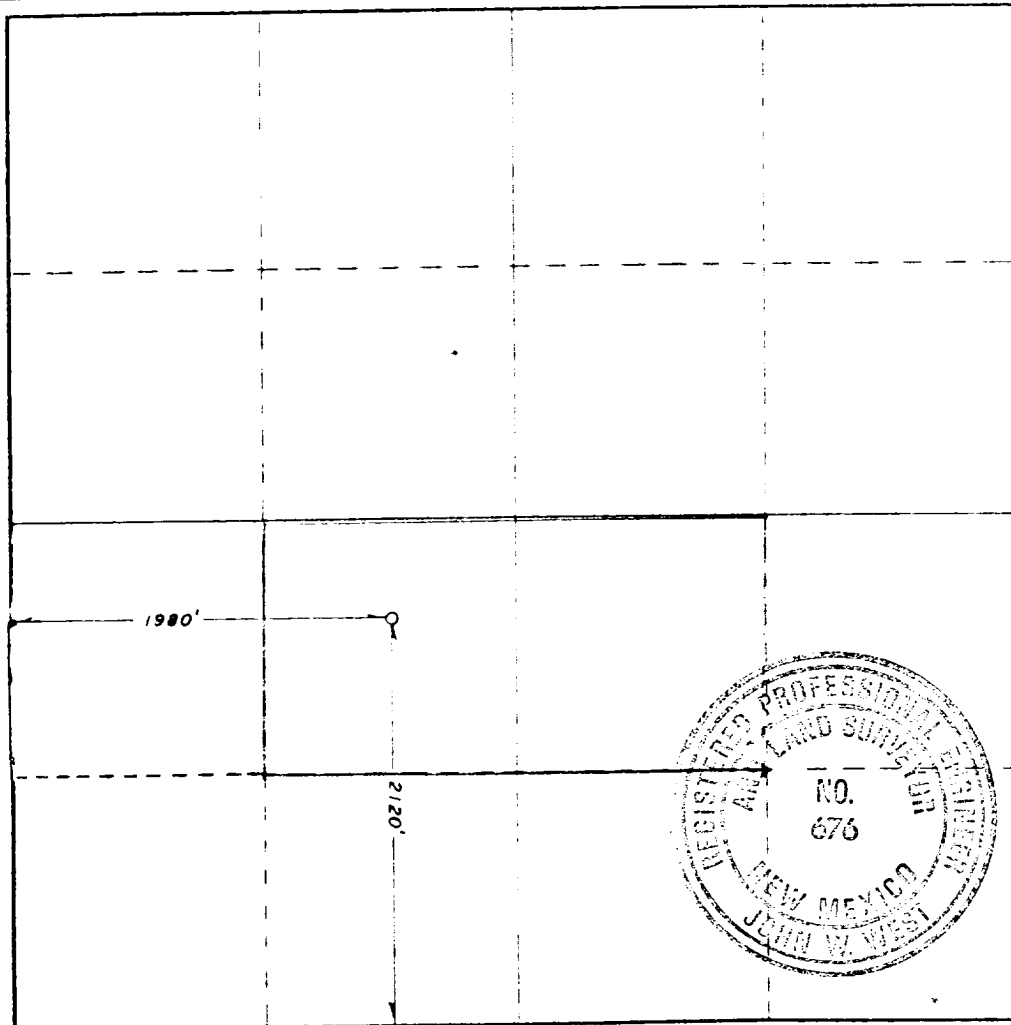
Operator GULF OIL CORP.		Lease DRINKARD NCT-B		Area 7
Unit Letter K	Section 30	Township 22S	Range 38E	County LEA
Actual Footage Location of Well:				
2120	feet from the SOUTH	line and	1980	feet from the WEST
Ground Level Elev. 3338.2	Producing Formation <i>Jubilee</i>	Pool <i>Jubilee</i>	Feet from Acreage 80	

1. Outline the acreage dedicated to the subject well by colored pencil or hatchure marks on the plat below.
2. If more than one lease is dedicated to the well, outline each and identify the ownership thereof (both as to working interest and royalty).
3. If more than one lease of different ownership is dedicated to the well, have the interests of all owners been consolidated by communitization, unitization, force-pooling, etc?

☐ Yes ☐ No If answer is "yes," type of consolidation _____

If answer is "no," list the owners and tract descriptions which have actually been consolidated. (Use reverse side of this form if necessary.) _____

No allowable will be assigned to the well until all interests have been consolidated (by communitization, unitization, forced-pooling, or otherwise) or until a non-standard unit, eliminating such interests, has been approved by the Commission.



CERTIFICATION

I hereby certify that the information contained herein is true and complete to the best of my knowledge and belief.

L. M. Rydeman

for **R.C. ANDERSON**

AREA PROD MGR

GULF OIL CORP

1-27-84

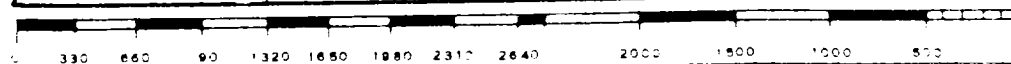
I hereby certify that the well location shown on this plat was plotted from field notes of actual surveys made by me or under my supervision, and that the same is true and correct to the best of my knowledge and belief.

I, the Surveyor:

1/24/84

Registered Professional Land Surveyor
in the State of New Mexico

John W. West
Certificate No. **JOHN W. WEST** 576
RONALD J. ELLISON 3233



RECEIVED
JAN 31 1984
FBI