

3. OF COPIES RECEIVED		
DISTRIBUTION		
SANTA FE		
FILE		
S.G.S.		
AND OFFICE		
PERATOR		

Form C-101
Revised 1-1-65

5A. Indicate Type of Lease

STATE	FEE
<input type="checkbox"/>	<input checked="" type="checkbox"/>

5. State Oil & Gas Lease No.

5. State Oil & Gas Lease No.

7. Unit Agreement Name
8. Farm or Lease Name VIVIAN

9. Well Ho.	13
10. Field and Pool, or Wildcat	BLINEBRY - TUBB

12. County

LEA

on	20. Rotary or C.T.
RY	Rotary

22. Approx. Date Work will start
FEBRUARY 15, 1984

A horizontal number line is shown, ranging from 0 to 10. Tick marks are present at every integer. The number 5 is circled. The number 8 is marked with a dot.

CEMENT	EST. TOP
KS APPROX	SURFACE
SKS	TIE BACK - SURFA

APPROVAL VALID FOR 180 DAYS
PERMIT EXPIRES 2/1/84
UNLESS DRILLING UNDERWAY

IN ABOVE SPACE DESCRIBE PROPOSED PROGRAM: IF PROPOSAL IS TO DEEPEN OR PLUG BACK, GIVE DATA ON PRESENT PRODUCTIVE ZONE AND PROPOSED NEW PRODUCTIVE ZONE. GIVE BLOWOUT PREVENTER PROGRAM, IF ANY.

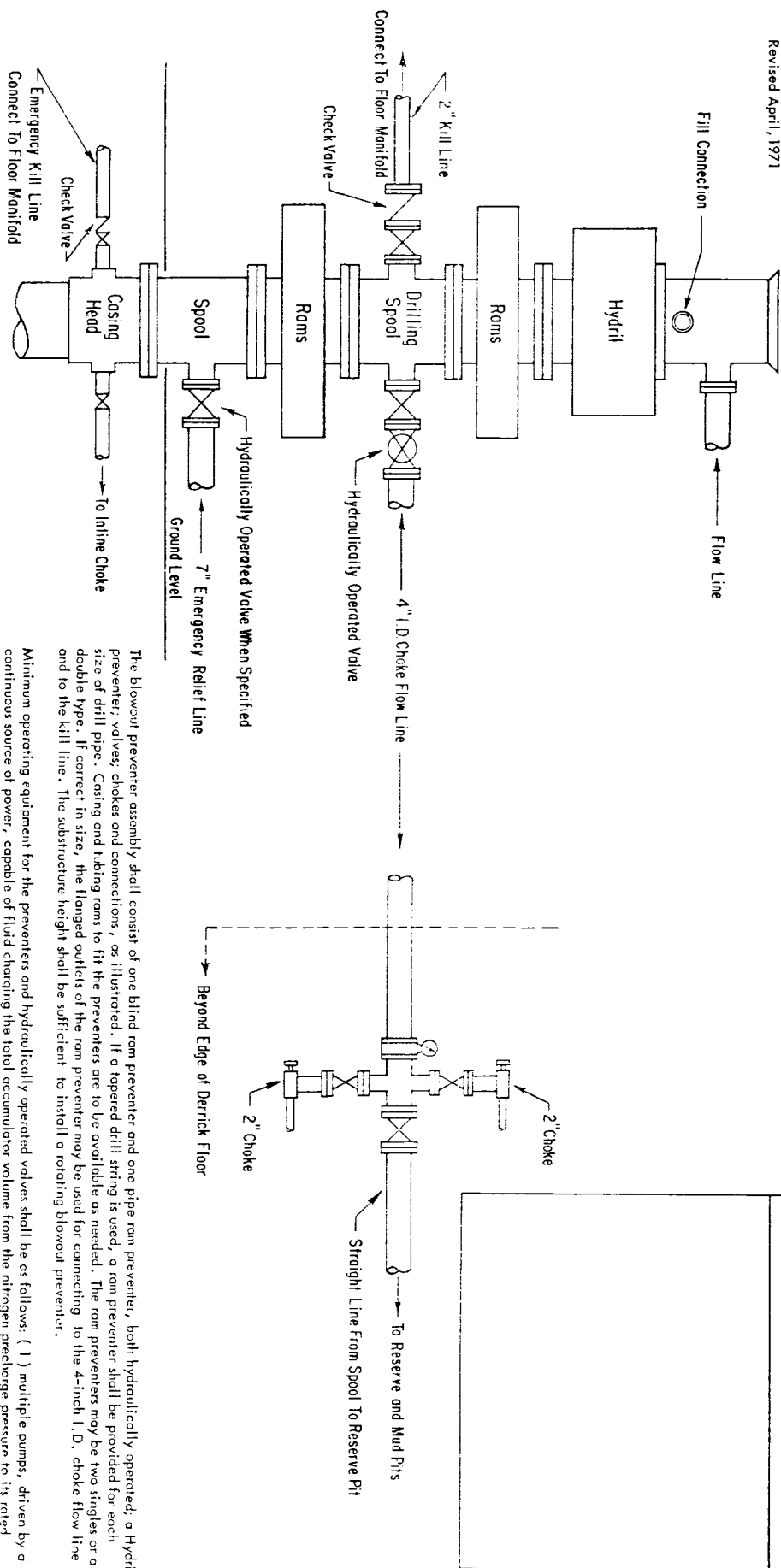
hereby certify that the information above is true and complete to the best of my knowledge and belief.

Signed L. M. Rydman Title AREA PROD MGR Date 1-27-84
(This space for State Use) for R. J. Anderson

ORIGINAL SIGNED BY JERRY SEXTON

APPROVED BY DISTRICT SUPERVISOR TITLE _____ DATE FEB 1 1984

CONDITIONS OF APPROVAL, IF ANY: Until both the unorthodox location and non-standard proration unit for the Tubb Oil & Gas Pool have been approved, the well cannot be produced as a gas well from the Tubb formation.



2000 - 3000 PSI WORKING PRESSURE BOP HOOK - UP FOR LARGE CASINGS

SPECIFY WORKING PRESSURE

labeled, with control handles to indicate open and closed positions. A pressure reducer and regulator must be provided for operating the Hydril preventer. When requested, a second pressure reducer shall be available to limit operating fluid pressures to ram preventers. Gulf Legion No. 38 hydraulic oil, an equivalent or better, is to be used as the fluid to operate the hydraulic equipment.

The choke manifold, the choke flow line, the choke lines and the relief lines are to be supported by metal stands and adequately anchored. The choke flow line, relief lines and choke lines shall be constructed as straight as possible and without sharp bends. Easy and safe access shall be maintained to the choke manifold. All valves are to be selected for operation in the presence of oil, gas, and drilling fluids. The choke flow line valves and valves of the relief lines connected to the drilling spools and all ram type preventers must be equipped with stem extensions, universal joints, if needed, and hand wheels which are to extend beyond the edge of the derrick substructure. All other valves shall be equipped with handles.

The blowout preventer assembly shall consist of one blind ram preventer and one pipe ram preventer, both hydraulically operated; a Hydril preventer; valves; chokes and connections, as illustrated. If a tapered drill string is used, a ram preventer shall be provided for each size of drill pipe. Casing and tubing rams to fit the preventers are to be available as needed. The ram preventers may be two singles or a double type. If correct in size, the flanged outlets of the ram preventer may be used for connecting to the 4-inch I.D. choke flow line and to the kill line. The substructure height shall be sufficient to install a rotating blowout preventer.

Minimum operating equipment for the preventers and hydraulically operated valves shall be as follows: (1) multiple pumps, driven by a continuous source of power, capable of fluid charging the total accumulator volume from the nitrogen precharge pressure to its rated pressure within _____ minutes. Also, the pumps are to be connected to the hydraulic uplifting system which is to be a closed system. (2) accumulators with a precharge of nitrogen of not less than 750 PSI and connected so as to receive the aforementioned fluid charge. With the charging pumps shut down, the pressurized fluid volume stored in the accumulators shall be sufficient to close all the pressure-operated devices simultaneously within _____ seconds; after closure, the remaining accumulator pressure shall be not less than 1000 PSI with the remaining accumulator fluid volume at least _____ percent of the original. When requested, either an additional source of power, remote and equivalent, is to be available to operate the above pumps, or there shall be additional pumps operated by separate power and equal in performance capabilities.

ADDITIONS - DELETIONS - CHANGES
SPECIFY

NEW MEXICO OIL CONSERVATION COMMISSION
WELL LOCATION AND ACREAGE DEDICATION PLAT

Form O-102
Supersedes O-128
Effective 1-1-65

All distances shall be from the outer boundaries of the Section

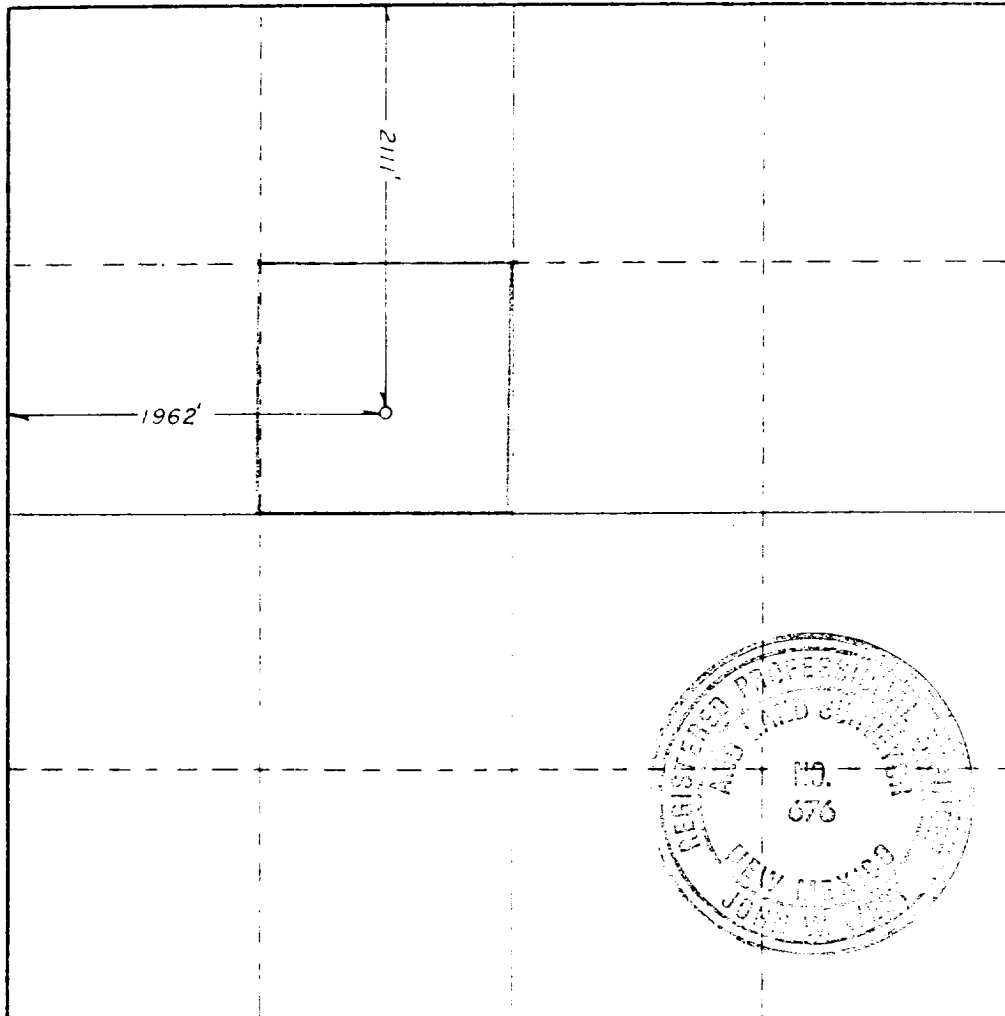
Operator GULF OIL CORP.			Lease VIVIAN			Area 13		
Grid Letter F	Section 30	Township 22S	Range 38E	County LEA				
Actual Surface Location of Well:								
2111 feet from the NORTH line and		1962 feet from the WEST line						
Ground Level Elev. 3335.5	Producing Formation <i>Blindery</i>		Pool <i>Blindery</i>	Hole No. & Depth <i>4C</i>				

- Outline the acreage dedicated to the subject well by colored pencil or hatchure marks on the plat below.
- If more than one lease is dedicated to the well, outline each and identify the ownership thereof (both as to working interest and royalty).
- If more than one lease of different ownership is dedicated to the well, have the interests of all owners been consolidated by communitization, unitization, force-pooling, etc?

☐ Yes ☐ No If answer is "yes," type of consolidation _____

If answer is "no," list the owners and tract descriptions which have actually been consolidated (use reverse side of this form if necessary.) _____

No allowable will be assigned to the well until all interests have been consolidated (by communitization, unitization, forced-pooling, or otherwise) or until a non-standard unit, eliminating such interests, has been approved by the Commission.



CERTIFICATION

I hereby certify that the information contained herein is true and complete to the best of my knowledge and belief.

L.M. Rydman

for **R.C. ANDERSON**

AREA PROD MGR

GULF OIL CORP

1-27-84

I hereby certify that the well location shown on this plat was plotted from field notes of actual surveys made by me or under my supervision, and that the same is true and correct to the best of my knowledge and belief.

Date Surveyed

1/24/84

Registered Professional Engineer
and State Surveyor

John W. West
Certificate No. **JOHN W. WEST** 576
RONALD J. EIDSON 2639

**NEW MEXICO OIL CONSERVATION COMMISSION
WELL LOCATION AND ACREAGE DEDICATION PLAT**

Form C-128
Supersedes C-128
Effective 1-1-84

All distances must be from the outer boundaries of the Section

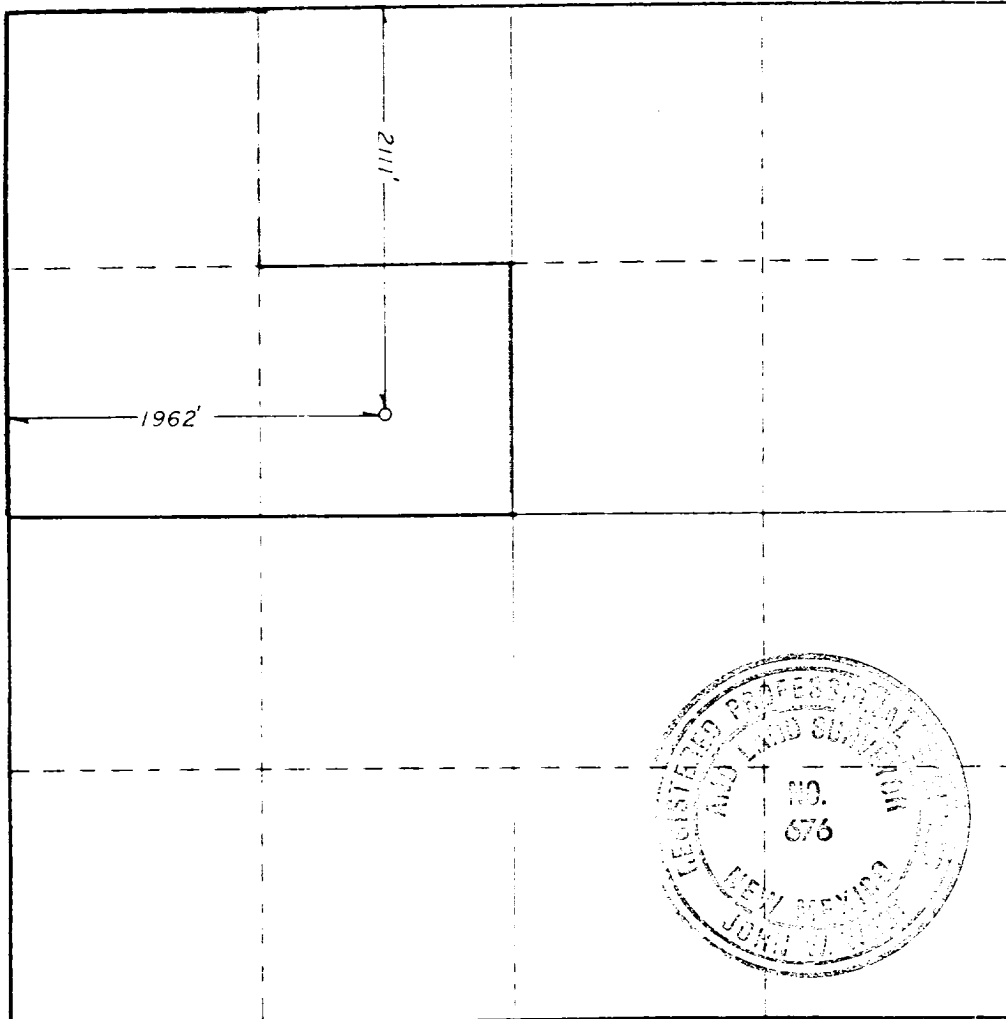
Operator GULF OIL CORP.			Lease VIVIAN		Well No. 13
Grid Letter F	Section 30	Township 22S	Range 38E	County LEA	
Actual Wellbore Location of Well:					
2111	feet from the NORTH	line and	1962	feet from the WEST	line
Ground Level Elev. 3335.5	Producing Formation <i>Suble</i>		Pool <i>Suble</i>	Estimated Acreage 120	

1. Outline the acreage dedicated to the subject well by colored pencil or machine marks on the plat below.
2. If more than one lease is dedicated to the well, outline each and identify the ownership thereof (both as to working interest and royalty).
3. If more than one lease of different ownership is dedicated to the well, have the interests of all owners been consolidated by communitization, unitization, force-pooling, etc?

☐ Yes ☐ No If answer is "yes," type of consolidation _____

If answer is "no," list the owners and tract descriptions which have actually been consolidated (Use reverse side of this form if necessary.) _____

No allowable will be assigned to the well until all interests have been consolidated (by communitization, unitization, forced-pooling, or otherwise) or until a non-standard unit, eliminating such interests, has been approved by the Commission.



CERTIFICATION

I hereby certify that the information contained herein is true and complete to the best of my knowledge and belief.

L. M. Rydman

R. C. ANDERSON

AREA PROD MGR

GULF OIL CORP

1-27-84

I hereby certify that the well location shown on this plat was plotted from field notes of actual surveys made by me or under my supervision, and that the same is true and correct to the best of my knowledge and belief.

Date Surveyed

1/24/84

Registered Professional Engineer and Land Surveyor

John W. West
Certificate No. **JOHN W. WEST** 576
RONALD J. EIDSON 5139

330 660 990 1320 1650 1980 2310 2640 2970 3300 3630 3960 4290 4620 4950 5280 5610 5940 6270 6600

173

RECEIVED
JAN 31 1984

173