

30-035-28608

NO. OF COPIES RECEIVED		
DISTRIBUTION		
SANTA FE		
FILE		
U.S.G.S.		
LAND OFFICE		
OPERATOR		

NEW MEXICO OIL CONSERVATION COMMISSION

Form C-101
Revised 1-1-65

5A. Indicate Type of Lease	
STATE <input checked="" type="checkbox"/>	FEE <input type="checkbox"/>
5. State Oil & Gas Lease No.	
V-732	
7. Unit Agreement Name	
--	
8. Form or Lease Name	
New Mexico "DL" State	
9. Well No.	
3	
10. Field and Pool, or Wildcat	
Undesig. Cruz-Delaware	
12. County	
Lea	
19. Proposed Depth	19A. Formation
5400'	Delaware
20. Rotary or C.T.	
Rotary	
21. Elevations (Show whether DF, RT, etc.)	21A. Kind & Status Plug. Bond
3706' GR	Blanket
21B. Drilling Contractor	22. Approx. Date Work will start
Unknown	6-1-84

APPLICATION FOR PERMIT TO DRILL, DEEPEN, OR PLUG BACK

1a. Type of Work	
b. Type of Well	
DRILL <input checked="" type="checkbox"/>	DEEPEN <input type="checkbox"/>
PLUG BACK <input type="checkbox"/>	
OIL WELL <input checked="" type="checkbox"/>	GAS WELL <input type="checkbox"/>
OTHER <input type="checkbox"/>	SINGLE ZONE <input checked="" type="checkbox"/>
MULTIPLE ZONE <input type="checkbox"/>	
2. Name of Operator	
Exxon Corporation	
3. Address of Operator	
P.O. Box 1600, Midland, Texas 79702	
4. Location of Well	
UNIT LETTER H	LOCATED 1980 FEET FROM THE North LINE
AND 330 FEET FROM THE East LINE OF SEC. 18	TWP. 23S RGE. 33E NMPM
21. Elevations (Show whether DF, RT, etc.)	
3706' GR	
21A. Kind & Status Plug. Bond	
Blanket	
21B. Drilling Contractor	
Unknown	
22. Approx. Date Work will start	
6-1-84	

23.

PROPOSED CASING AND CEMENT PROGRAM

SIZE OF HOLE	SIZE OF CASING	WEIGHT PER FOOT	SETTING DEPTH	SACKS OF CEMENT	EST. TOP
12 1/4"	8 5/8"	24#	650'	400	Surface
7 7/8"	5 1/2"	17#	5400'	1400	Surface

Mud: 0-650' 8.4 ppg FW Spud mud

650-5400' 9.5-10 ppg Brine water

BOP 8 5/8" Type II C/2000 PSI

Diagrammatic sketch and specifications of BOP are attached.

APPROVAL VALID FOR 180 DAYS
 PERMIT EXPIRES 8/13/84
 UNLESS DRILLING UNDERWAY

IN ABOVE SPACE DESCRIBE PROPOSED PROGRAM; IF PROPOSAL IS TO DEEPEN OR PLUG BACK, GIVE DATA ON PRESENT PRODUCTIVE ZONE AND PROPOSED NEW PRODUCTIVE ZONE. GIVE SLOWOUT PREVENTER PROGRAM, IF ANY.

I hereby certify that the information above is true and complete to the best of my knowledge and belief.

Signed Melba Knippling Title Unit Head Date 2-4-84

(This space for State Use)

Eddie W. Seay

APPROVED BY Oil & Gas Inspector TITLE DATE FEB 10 1984

CONDITIONS OF APPROVAL, IF ANY:

RECEIVED
FEB 7 1984
O.C.D.
HOBBS OR

Exxon Lse. No. _____ NEW MEXICO OIL CONSERVATION COMMISSION
State Lse. No. _____ WELL LOCATION AND ACREAGE DEDICATION PLAT

Form C-102
Supersedes C-128
Effective 1-1-65

Federal Lse. No. _____ All distances must be from the outer boundaries of the Section.

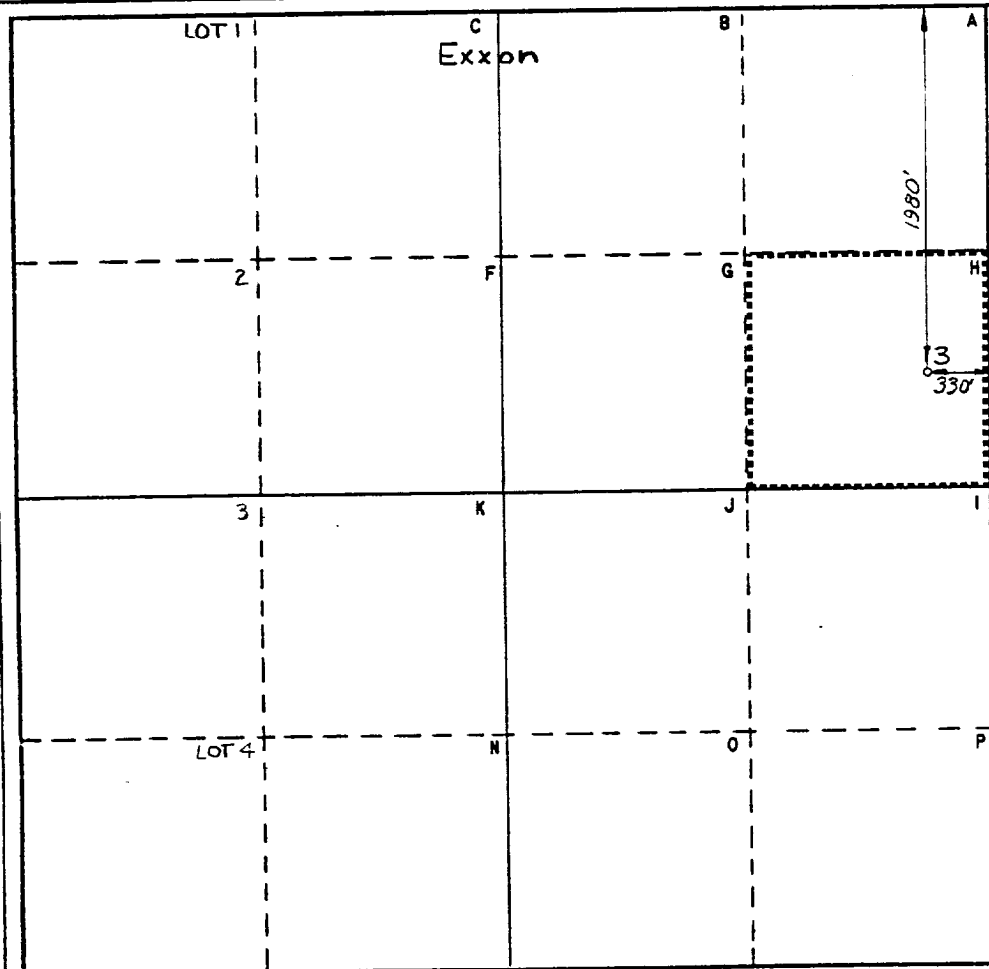
Operator Exxon Corporation		Lease NEW MEXICO "DL" STATE		Well No. 3
Unit Letter H	Section 18	Township 23S	Range 33E	County LEA
Actual Footage Location of Well: 1980 feet from the NORTH line and 330 feet from the EAST line				
Ground Level Elev. 3706' GR.	Producing Formation DELAWARE	Pool UNDESIG.-CRUZ	Dedicated Acreage: 40 Acres	

1. Outline the acreage dedicated to the subject well by colored pencil or hachure marks on the plat below.
2. If more than one lease is dedicated to the well, outline each and identify the ownership thereof (both as to working interest and royalty).
3. If more than one lease of different ownership is dedicated to the well, have the interests of all owners been consolidated by communitization, unitization, force-pooling, etc?

☐ Yes ☐ No If answer is "yes," type of consolidation _____

If answer is "no," list the owners and tract descriptions which have actually been consolidated. (Use reverse side of this form if necessary.) _____

No allowable will be assigned to the well until all interests have been consolidated (by communitization, unitization, forced-pooling, or otherwise) or until a non-standard unit, eliminating such interests, has been approved by the Commission.



CERTIFICATION

I hereby certify that the information contained herein is true and complete to the best of my knowledge and belief.

Name
Melba Knippling

Position
UNIT HEAD

Company Exxon Corporation
Box 1600 Midland, Texas

Date
2-6-54

I hereby certify that the well location shown on this plat was obtained from field notes of actual surveys made by me or under my supervision, and that the same is true and correct to the best of my knowledge and belief.

Date Surveyed
1-17-84

Registered Professional Engineer
and/or Land Surveyor

W. J. Robinson
Certificate No.
6157

22 Miles WNW of JAL, New Mexico

C.E. Sec. File No. A-8092-B

RECEIVED
FEB 7 1984
O.C.D.
HQS. OFFICE

BLOWOUT PREVENTER SPECIFICATION
EQUIPMENT DESCRIPTION

TYPE II-C

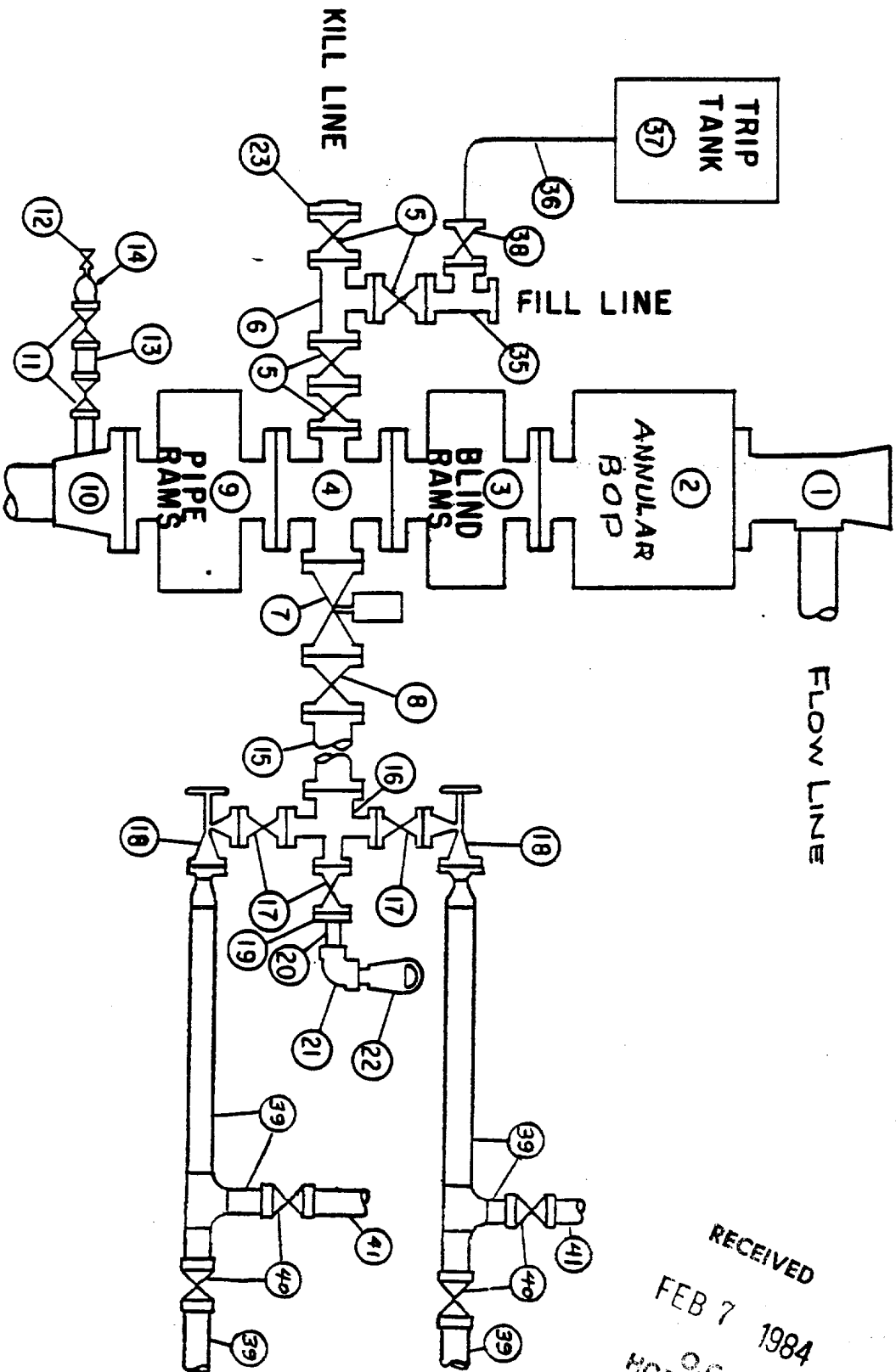
All equipment should be at least 2000 psi WP or higher unless otherwise specified.

1. Bell nipple.
2. Hydril or Shaffer bag type preventer.
3. Ram type pressure operated blowout preventer with blind rams.
4. Flanged spool with one 4-inch and one 2-inch (minimum) outlet.
5. 2-inch (minimum) flanged plug or gate valve.
6. 2-inch by 2-inch by 2-inch (minimum) flanged tee.
7. 4-inch pressure operated gate valve.
8. 4-inch flanged gate or plug valve.
9. Ram type pressure operated blowout preventer with pipe rams.
10. Flanged type casing head with one side outlet (furnished by Exxon).
11. 2-inch threaded (or flanged) plug or gate valve (furnished by Exxon).
Flanged on 5000# WP, threaded on 3000# WP or less.
12. Needle valve (furnished by Exxon).
13. 2-inch nipple (furnished by Exxon).
14. Tapped bull plug (furnished by Exxon).
15. 4-inch flanged spacer spool.
16. 4-inch by 2-inch by 2-inch by 2-inch flanged cross.
17. 2-inch flanged plug or gate valve.
18. 2-inch flanged adjustable choke.
19. 2-inch threaded flange.
20. 2-inch XXH nipple.
21. 2-inch forged steel 90° Ell.
22. Cameron (or equal.) threaded pressure gage.
23. Threaded flange.
35. 2-inch flanged tee.
36. 3-inch (minimum) hose. (Furnished by Exxon).
37. Trip tank. (Furnished by Exxon).
38. 2-inch flanged plug or gate valve.
39. 2-1/2-inch pipe, 300' to pit, anchored.
40. 2-1/2-inch SE valve.
41. 2-1/2-inch line to steel pit or separator.

NOTES:

1. Items 3, 4 and 9 may be replaced with double ram type preventer with side outlets between the rams.
2. The two valves next to the stack on the fill and kill line to be closed unless drill string is being pulled.
3. Kill line is for emergency use only. This connection shall not be used for filling.
4. Replacement pipe rams and blind rams shall be on location at all times.
5. Only type U, LWS and QRC ram type preventers with secondary seals are acceptable for 5000 psi WP and higher BOP stacks.
6. Type E ram-type BOP's with factory modified side outlets may be used on 3000 psi or lower WP BOP stacks.

MIDLAND DRILLING ORGANIZATION BLOWOUT PREVENTER SPECIFICATION TYPE II - C



RECEIVED
 FEB 7 1984
 O.C.D.
 HOBBS OFFICE

173

9/15/73