

30-025-28609

NO. OF COPIES RECEIVED	
DISTRIBUTION	
SANTA FE	
FILE	
U.S.G.S.	
LAND OFFICE	
OPERATOR	

NEW MEXICO OIL CONSERVATION COMMISSION

Form C-101
Revised 1-1-85

5A. Indicate Type of Lease	
STATE <input checked="" type="checkbox"/>	FEE <input type="checkbox"/>
5. State Oil & Gas Lease No.	
V-732	

APPLICATION FOR PERMIT TO DRILL, DEEPEN, OR PLUG BACK

1a. Type of Work				7. Unit Agreement Name	
DRILL <input checked="" type="checkbox"/> DEEPEN <input type="checkbox"/> PLUG BACK <input type="checkbox"/>				--	
b. Type of Well OIL WELL <input checked="" type="checkbox"/> GAS WELL <input type="checkbox"/> OTHER <input type="checkbox"/> SINGLE ZONE <input checked="" type="checkbox"/> MULTIPLE ZONE <input type="checkbox"/>				8. Form or Lease Name	
2. Name of Operator				9. Well No.	
Exxon Corporation				4	
3. Address of Operator				10. Field and Pool, or Wildcat	
P.O. Box 1600, Midland, Texas 79702				Undesig. Cruz-Delaware Wildcat - Bone Springs	
4. Location of Well				12. County	
UNIT LETTER <u>N</u> LOCATED <u>330</u> FEET FROM THE <u>South</u> LINE AND <u>2242</u> FEET FROM THE <u>West</u> LINE OF SEC. <u>18</u> TWP. <u>23S</u> RGE. <u>33E</u> NMPM				Lea	
21. Elevations (Show whether DF, RT, etc.)				19. Proposed Depth	
<u>3701' GL.</u>				9000'	
21A. Kind & Status Plug. Bond		21B. Drilling Contractor		20. Rotary or C.T.	
Blanket		Unknown		Rotary	
				22. Approx. Date Work will start	
				6-15-84	

PROPOSED CASING AND CEMENT PROGRAM

SIZE OF HOLE	SIZE OF CASING	WEIGHT PER FOOT	SETTING DEPTH	SACKS OF CEMENT	EST. TOP
20"	16"	75#	650'	700	Surface
14 3/4"	10 3/4"	51 & 45.5#	5000'	2500	Surface
7 7/8"	5 1/2"	17 & 20#	9000'	950	4000'

Mud: 0-650'
650-5000'
5000-9000'

FW Spud
10 ppg Brine Water
9 ppg Cut Brine Water

BOP: 16" Type II C/2000 PSI
10 3/4" Type II C/2000 PSI

APPROVAL VALID FOR 180 DAYS
PERMIT EXPIRES 8/13/84
UNLESS DRILLING UNDERWAY

IN ABOVE SPACE DESCRIBE PROPOSED PROGRAM: IF PROPOSAL IS TO DEEPEN OR PLUG BACK, GIVE DATA ON PRESENT PRODUCTIVE ZONE AND PROPOSED NEW PRODUCTIVE ZONE. GIVE BLOWOUT PREVENTER PROGRAM, IF ANY.

I hereby certify that the information above is true and complete to the best of my knowledge and belief.

Signed Melba Knippling Title Unit Head Date 2-4-84

(This space for State Use)

Eddie W. Seay

APPROVED BY Oil & Gas Inspector TITLE _____ DATE _____

CONDITIONS OF APPROVAL, IF ANY:

FEB 10 1984

RECEIVED
FEB 7 1984
O.C.D.
HOZBS OFFICE

Federal Lse. No. _____ All distances must be from the outer boundaries of the Section.

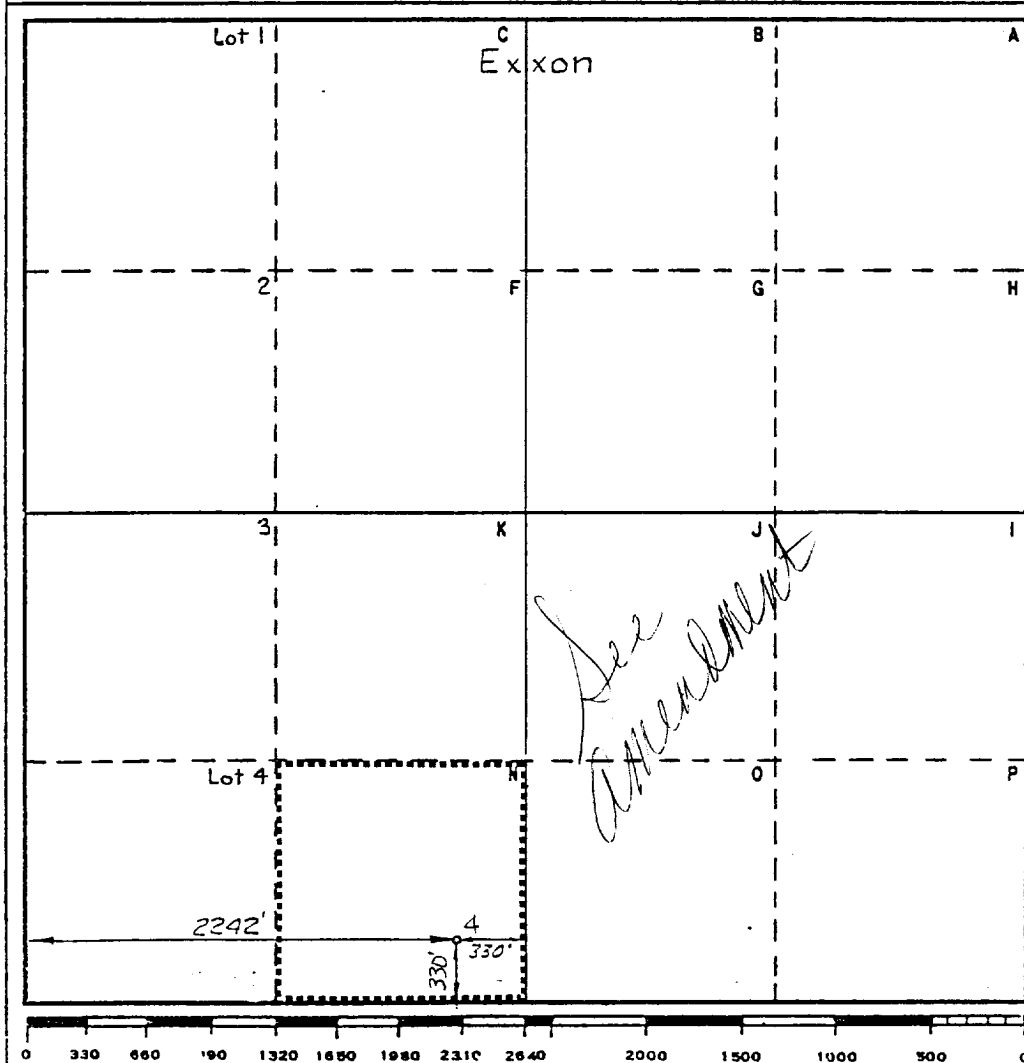
Operator Exxon Corporation			Lease NEW MEXICO "DL" STATE		Well No. 4
Unit Letter N	Section 18	Township 23 S	Range 33 E	County LEA	
Actual Footage Location of Well: 330 feet from the SOUTH line and 2242 feet from the WEST line					
Ground Level Elev: 3701'	Producing Formation DELAWARE		Pool UNDESIG. CRUZ-DELAWARE	Dedicated Acreage: 40 Acres	

1. Outline the acreage dedicated to the subject well by colored pencil or hatchure marks on the plat below.
2. If more than one lease is dedicated to the well, outline each and identify the ownership thereof (both as to working interest and royalty).
3. If more than one lease of different ownership is dedicated to the well, have the interests of all owners been consolidated by communitization, unitization, force-pooling, etc?

☐ Yes ☐ No If answer is "yes," type of consolidation _____

If answer is "no," list the owners and tract descriptions which have actually been consolidated. (Use reverse side of this form if necessary.) _____

No allowable will be assigned to the well until all interests have been consolidated (by communitization, unitization, forced-pooling, or otherwise) or until a non-standard unit, eliminating such interests, has been approved by the Commission.



CERTIFICATION

I hereby certify that the information contained herein is true and complete to the best of my knowledge and belief.

Name
Melba Knipling
Position

UNIT HEAD

Company Exxon Corporation
Box 1600 Midland, Texas

Date
2-6-84

I hereby certify that the well location shown on this plat was plotted from field notes of actual surveys made by me or under my supervision, and that the same is true and correct to the best of my knowledge and belief.

Date Surveyed
1-5-84

Registered Professional Engineer
and/or Land Surveyor

W. J. Richmond
Certificate No. 6157

22 Miles WNW of JAL, New Mexico

C.E. Sec. File No. A-8092-C

RECEIVED
FEB 7 1984
O.C.D.
HOBBS OFFICE

Exxon Lse. No. _____ NEW MEXICO OIL CONSERVATION COMMISSION
State Lse. No. _____ WELL LOCATION AND ACREAGE DEDICATION PLAT

Form C-102
Supersedes C-128
Effective 1-1-65

Federal Lse. No. _____ All distances must be from the outer boundaries of the Section.

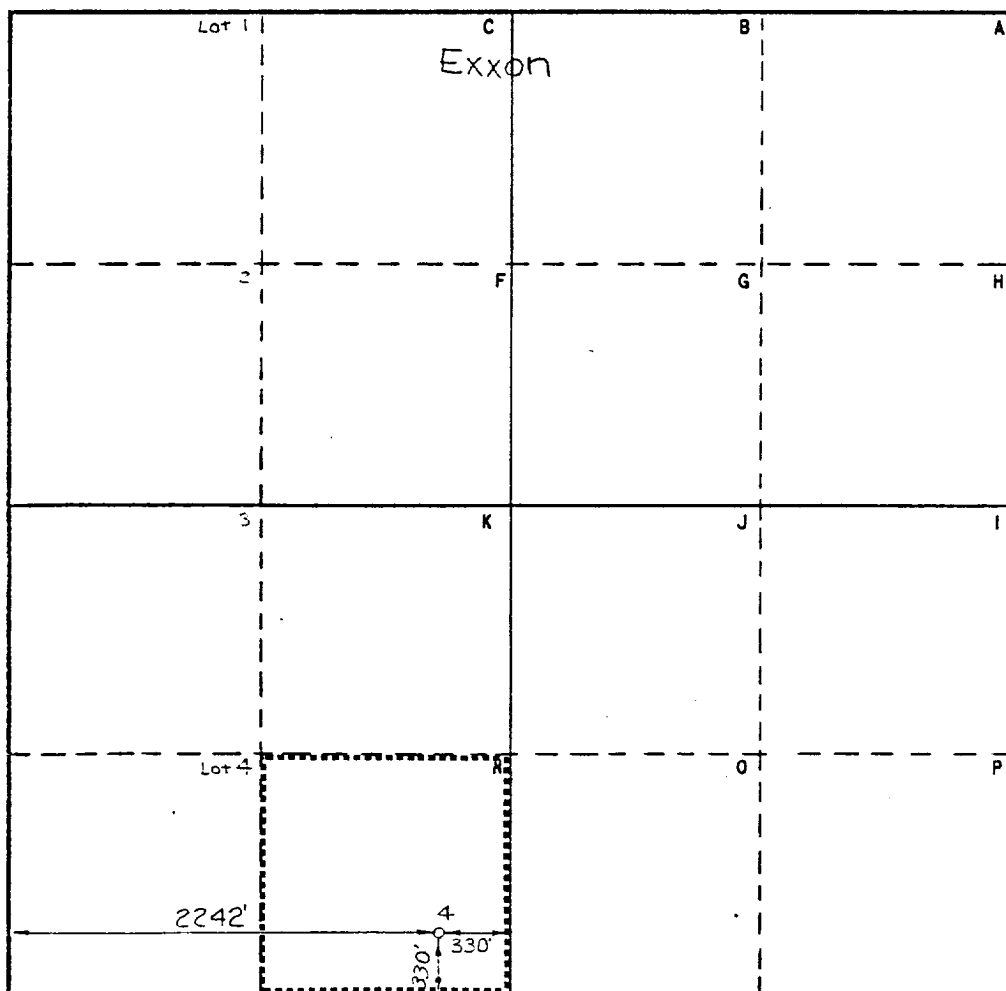
Operator Exxon Corporation		Lease NEW MEXICO "DL" STATE		Well No. 4
Unit Letter N	Section 18	Township 23S	Range 33E	County LEA
Actual Footage Location of Well: 330 feet from the SOUTH line and 2242 feet from the WEST line				
Ground Level Elev. 3701	Producing Formation BONE SPRING	Pool WILDCAT	Dedicated Acreage: 40 Acres	

1. Outline the acreage dedicated to the subject well by colored pencil or hachure marks on the plat below.
2. If more than one lease is dedicated to the well, outline each and identify the ownership thereof (both as to working interest and royalty).
3. If more than one lease of different ownership is dedicated to the well, have the interests of all owners been consolidated by communitization, unitization, force-pooling, etc?

☐ Yes ☐ No If answer is "yes," type of consolidation _____

If answer is "no," list the owners and tract descriptions which have actually been consolidated. (Use reverse side of this form if necessary.) _____

No allowable will be assigned to the well until all interests have been consolidated (by communitization, unitization, forced-pooling, or otherwise) or until a non-standard unit, eliminating such interests, has been approved by the Commission.



CERTIFICATION

I hereby certify that the information contained herein is true and complete to the best of my knowledge and belief.

Name
Melva Knipping
Position
UNIT HEAD
Company Exxon Corporation
Box 1600 Midland, Texas
Date
2-6-84

I hereby certify that the well location shown on this plat was plotted from field notes of actual survey by me under my supervision and that the same is true and correct to the best of my knowledge and belief.

Date Surveyed
1-5-84
Registered Professional Engineer
and/or Land Surveyor

W. J. Richmond
Certificate No.
6157

22 Miles NW of JAL, New Mexico

C.E. Sec. File No. A-8092-1-C

RECEIVED
FEB 7 1984
O.C.D.
HOBBS OFFICE

BLOWOUT PREVENTER SPECIFICATION
EQUIPMENT DESCRIPTION

TYPE II-C

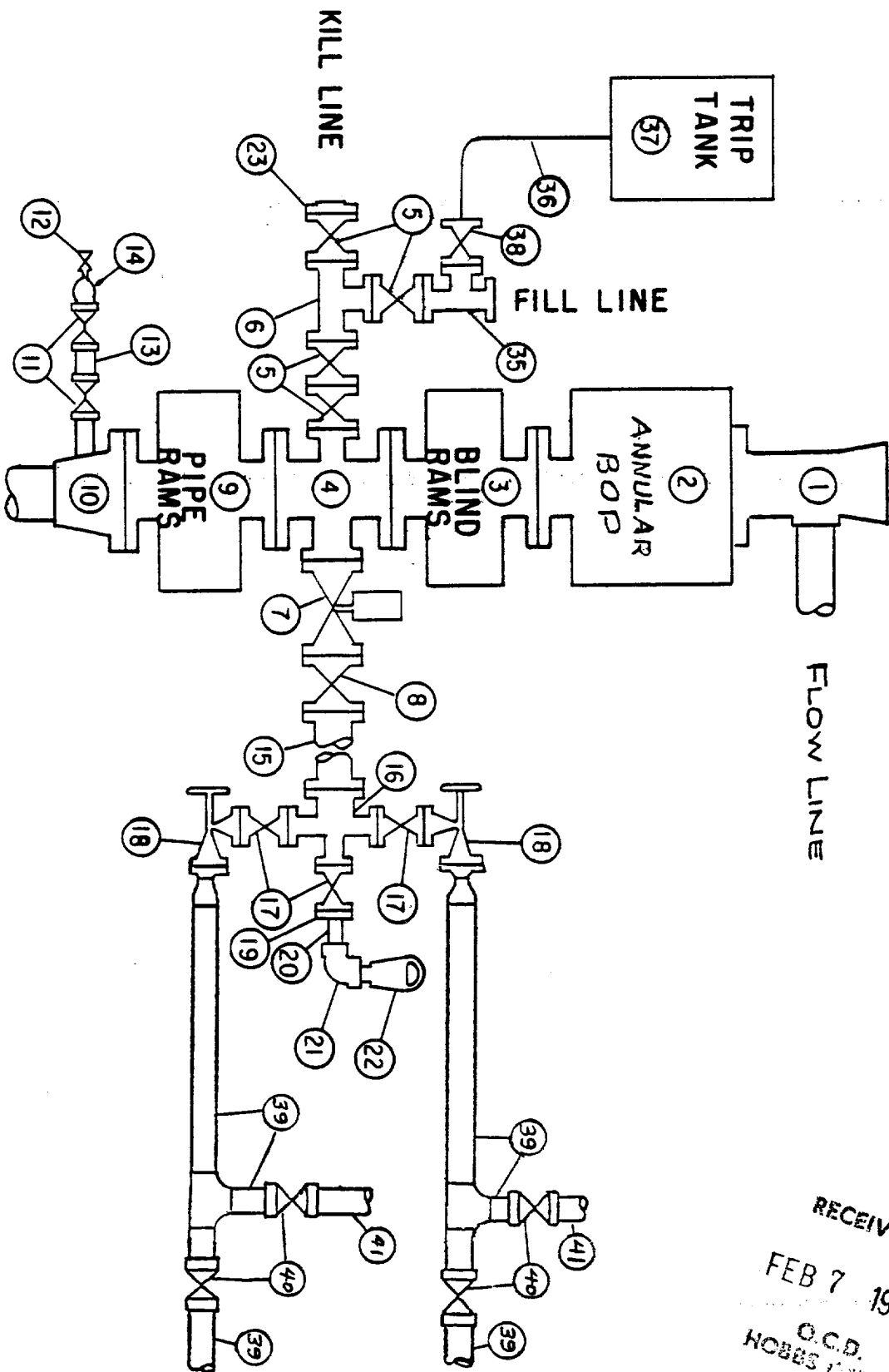
All equipment should be at least 2000 psi WP or higher unless otherwise specified.

1. Bell nipple.
2. Hydril or Shaffer bag type preventer.
3. Ram type pressure operated blowout preventer with blind rams.
4. Flanged spool with one 4-inch and one 2-inch (minimum) outlet.
5. 2-inch (minimum) flanged plug or gate valve.
6. 2-inch by 2-inch by 2-inch (minimum) flanged tee.
7. 4-inch pressure operated gate valve.
8. 4-inch flanged gate or plug valve.
9. Ram type pressure operated blowout preventer with pipe rams.
10. Flanged type casing head with one side outlet (furnished by Exxon).
11. 2-inch threaded (or flanged) plug or gate valve (furnished by Exxon).
Flanged on 5000# WP, threaded on 3000# WP or less.
12. Needle valve (furnished by Exxon).
13. 2-inch nipple (furnished by Exxon).
14. Tapped bull plug (furnished by Exxon).
15. 4-inch flanged spacer spool.
16. 4-inch by 2-inch by 2-inch by 2-inch flanged cross.
17. 2-inch flanged plug or gate valve.
18. 2-inch flanged adjustable choke.
19. 2-inch threaded flange.
20. 2-inch XXH nipple.
21. 2-inch forged steel 90° Ell.
22. Cameron (or equal.) threaded pressure gage.
23. Threaded flange.
35. 2-inch flanged tee.
36. 3-inch (minimum) hose. (Furnished by Exxon).
37. Trip tank. (Furnished by Exxon).
38. 2-inch flanged plug or gate valve.
39. 2-1/2-inch pipe, 300' to pit, anchored.
40. 2-1/2-inch SE valve.
41. 2-1/2-inch line to steel pit or separator.

NOTES:

1. Items 3, 4 and 9 may be replaced with double ram type preventer with side outlets between the rams.
2. The two valves next to the stack on the fill and kill line to be closed unless drill string is being pulled.
3. Kill line is for emergency use only. This connection shall not be used for filling.
4. Replacement pipe rams and blind rams shall be on location at all times.
5. Only type U, LWS and QRC ram type preventers with secondary seals are acceptable for 5000 psi WP and higher BOP stacks.
6. Type E ram-type BOP's with factory modified side outlets may be used on 3000 psi or lower WP BOP stacks.

MIDLAND DRILLING ORGANIZATION BLOWOUT PREVENTER SPECIFICATION TYPE II - C



FILE

RECEIVED
 FEB 7 1984
 O.C.D.
 HOBBS OFFICE

9/15/73