

NEW MEXICO OIL CONSERVATION COMMISSION
WELL LOCATION AND ACREAGE DEDICATION PLAT

Form C-10
Supersedes C-128
Effective 1-1-85

All distances must be from the outer boundaries of the Section

Operator Andarko Production Co.		Lease Lou Wortham		Well No. 19
Unit Letter F	Section 11	Township 22 South	Range 37 East	County Lea

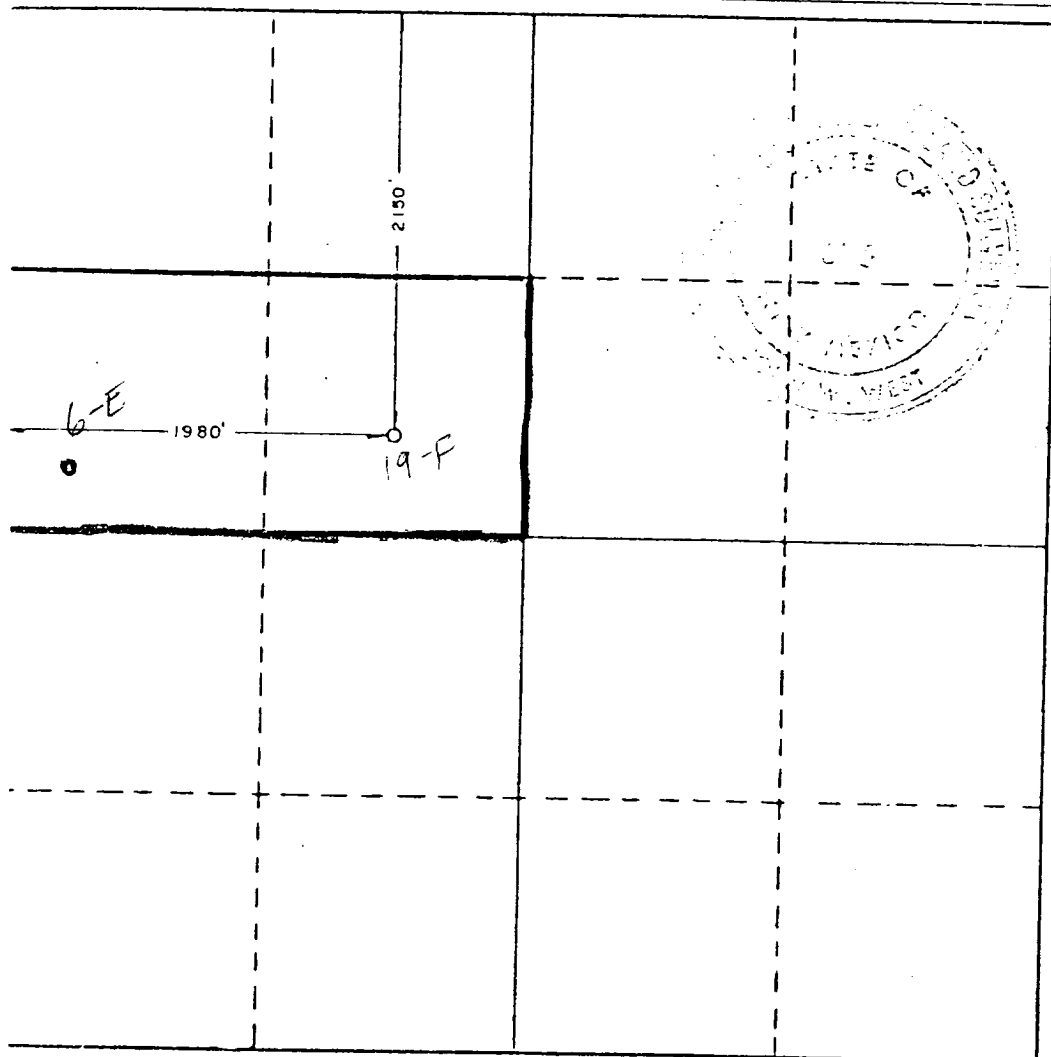
Actual Footage Location of Well: 2150 feet from the north line and 1980 feet from the west line				
Ground Level Elev. 3358.3'	Producing Formation South Eunice-San Andres	Pool South Eunice-San Andres	Dedicated Acreage: 80 Acres	

1. Outline the acreage dedicated to the subject well by colored pencil or hachure marks on the plat below. *S/ 6-E 19-F*
2. If more than one lease is dedicated to the well, outline each and identify the ownership thereof (both as to working interest and royalty).
3. If more than one lease of different ownership is dedicated to the well, have the interests of all owners been consolidated by communitization, unitization, force-pooling, etc?

☐ Yes ☐ No If answer is "yes," type of consolidation _____

If answer is "no," list the owners and tract descriptions which have actually been consolidated. (Use reverse side of this form if necessary.) _____

No allowable will be assigned to the well until all interests have been consolidated (by communitization, unitization, forced-pooling, or otherwise) or until a non-standard unit, eliminating such interests, has been approved by the Commission.



CERTIFICATION

I hereby certify that the information contained herein is true and complete to the best of my knowledge and belief.

John C. English
Name

John C. English
Position
Area Supervisor

Company
Anadarko Production Co.

Date
February 14, 1984

I hereby certify that the well location shown on this plat was plotted from field notes of actual surveys made by me or under my supervision, and that the same is true and correct to the best of my knowledge and belief.

Date Surveyed
May 18, 1983

Registered Professional Engineer and/or Land Surveyor

John W. West
Certificate No.

John W. West NM I. S. No. 676