

**NEW MEXICO OIL CONSERVATION COMMISSION
WELL LOCATION AND ACREAGE DEDICATION PLAT**

Form C-102
Supersedes C-128
Effective 1-1-65

All distances must be from the outer boundaries of the Section.

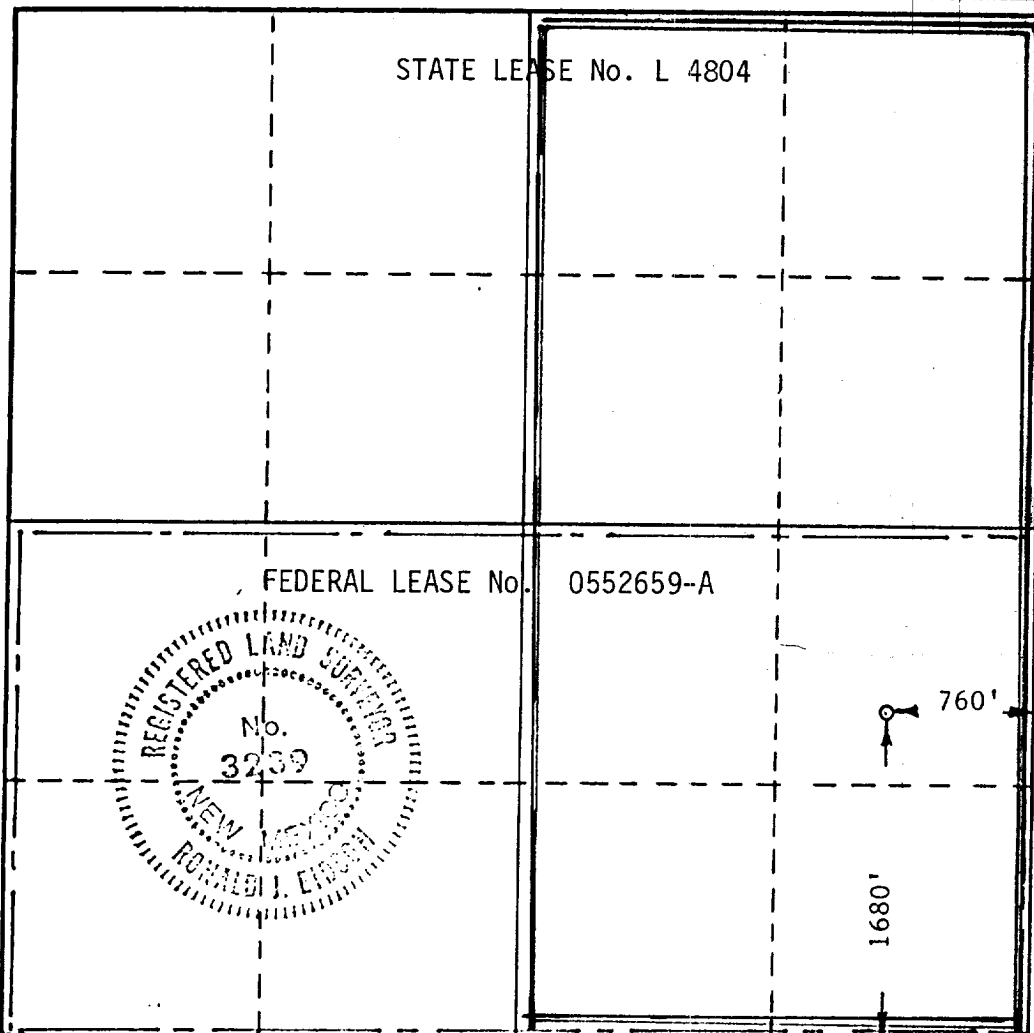
Operator Curry Resources			Lease Curry Federal		Well No. 3
Unit Letter I	Section 22	Township 23 South	Range 34 East	County Lea	
Actual Footage Location of Well: 1680 feet from the South line and 760 feet from the East line					
Ground Level Elev. 3415.5	Producing Formation Morrow		Pool Antelope Ridge (Morrow)		Dedicated Acreage; 320 Acres Acres

1. Outline the acreage dedicated to the subject well by colored pencil or hachure marks on the plat below.
2. If more than one lease is dedicated to the well, outline each and identify the ownership thereof (both as to working interest and royalty).
3. If more than one lease of different ownership is dedicated to the well, have the interests of all owners been consolidated by communitization, unitization, force-pooling, etc?

☒ Yes ☐ No If answer is "yes," type of consolidation *To be Communitized (See attachment.)*

If answer is "no," list the owners and tract descriptions which have actually been consolidated. (Use reverse side of this form if necessary.) *See attached list*

No allowable will be assigned to the well until all interests have been consolidated (by communitization, unitization, forced-pooling, or otherwise) or until a non-standard unit, eliminating such interests, has been approved by the Commission.



CERTIFICATION

I hereby certify that the information contained herein is true and complete to the best of my knowledge and belief.

Name
MAX E. CURRY

Position
OWNER

Company
CURRY RESOURCES

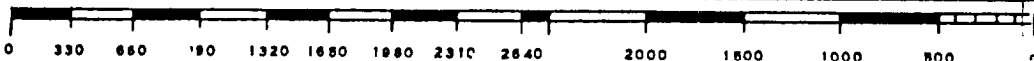
Date
June 28, 1984

I hereby certify that the well location shown on this plat was plotted from field notes of actual surveys made by me or under my supervision, and that the same is true and correct to the best of my knowledge and belief.

Date Surveyed
6-26-84

Registered Professional Engineer and/or Land Surveyor

Ronald J. Eldon
Certificate No. **JOHN W. WEST 878**
Ronald J. Eldon 3239



2 -

f

RECEIVED

JUL 6 - 1934

O.C.D.
HOBBS OFFICE