

Permit Expires 1 Year From Approval
Date less Drilling Underway
Re-Entry

District I

1625 N. French Dr., Hobbs, NM 88240

District II

811 South First, Artesia, NM 88210

District III

1000 Rio Brazos Road, Aztec, NM 87410

District IV

2040 South Pacheco, Santa Fe, NM 87505

State of New Mexico
Energy Minerals and Natural Resources

Oil Conservation Division

2040 South Pacheco

Santa Fe, NM 87505

Form C-101

Revised March 17, 1999

Submit to appropriate District Office

State Lease - 6 Copies

Fee Lease - 5 Copies

☐ AMENDED REPORT

APPLICATION FOR PERMIT TO DRILL, RE-ENTER, DEEPEN, PLUGBACK, OR ADD A ZONE

¹ Operator Name and Address Yates Petroleum Corporation 105 South Fourth Street Artesia, New Mexico 88210		² OGRID Number 025575
		³ API Number 30-025-28872
⁴ Property Code 26162	⁵ Property Name Keller Alf State	⁶ Well No. 1

⁷Surface Location

UL or lot no.	Section	Township	Range	Lot Idn	Feet from the	North/South line	Feet from the	East/West line	County
G	21	23-S	34-E		1750'	North	1980'	East	Lea

⁸Proposed Bottom Hole Location If Different From Surface

UL or lot no.	Section	Township	Range	Lot Idn	Feet from the	North/South line	Feet from the	East/West line	County
Antelope Ridge									
⁹ Proposed Pool 1 Wildcat Morrow					¹⁰ Proposed Pool 2				

¹¹ Work Type Code P	¹² Well Type Code G	¹³ Cable/Rotary Rotary	¹⁴ Lease Type Code S	¹⁵ Ground Level Elevation 3486'
¹⁶ Multiple No	¹⁷ Proposed Depth 13,900'	¹⁸ Formation Morrow	¹⁹ Contractor Not determined	²⁰ Spud Date ASAP

²¹Proposed Casing and Cement Program

Hole Size	Casing Size	Casing weight/foot	Setting Depth	Sacks of Cement	Estimated TOC
26"	20"	94#	621'	1050 sx	In Place
17 1/2"	13 3/4"	68 & 72#	5110'	4950 sx	In Place
12 1/4"	9 5/8"	43 & 47#	12000'	3960 sx	In Place
7 7/8"	5 1/2"	Liner 23	13900'	450 sx	TOC 11,900'

²² Describe the proposed program. If this application is to DEEPEN or PLUG BACK, give the data on the present productive zone and proposed new productive zone.

Describe the blowout prevention program, if any. Use additional sheets if necessary. Yates Petroleum Corporation's plan is to re-enter the well with a pulling unit and reverse unit to fish out a HOWCO RBP and to squeeze existing perforations in the 9 5/8" casing. We will then rig up a drilling rig to drill out of the 9 5/8" casing to the original TD of 13,900'. The mud to be used will be a 14.6-14.8.5 ppg brine mud, 28-50 viscosity. After circulating the hole clean we will run a 5 1/2" liner from 11,500' to 13,900' cemented with +/- 450 sacks of cement. The well will be completed with a pulling unit. Possible formation to be completed will be the Morrow sand +/-13,684.
BOPE PROGRAM: a 5000# BOP will be installed on the 9 5/8" casing and tested daily.

²³ I hereby certify that the information given above is true and complete to the best of my knowledge and belief.

Signature:

Printed name: Ken Beardemphl

Title: Landman

Date:

July 6, 2000

Phone:

(505) 748-1471

OIL CONSERVATION DIVISION

Approved by:

Title:

Approval Date:

Expiration Date:

Conditions of Approval:

Attached ☐

District I

1625 N. French Dr., Hobbs, NM 88240

District II

811 South First, Artesia, NM 88210

District III

1000 Rio Brazos Rd., Aztec, NM 87410

District IV

2040 South Pacheco, Santa Fe, NM 87505

State of New Mexico
Energy, Minerals & Natural ResourcesOIL CONSERVATION DIVISION
2040 South Pacheco
Santa Fe, NM 87505Form C-102
Revised March 17, 1999Submit to Appropriate District Office
State Lease - 4 Copies
Fee Lease - 3 Copies☐ AMENDED REPORT

WELL LOCATION AND ACREAGE DEDICATION PLAT

¹ API Number 30-025-28872		² Pool Code 70440		³ Pool Name Antelope Ridge Morrow	
⁴ Property Code 26162		⁵ Property Name Keller ATF State			⁶ Well Number I
⁷ OGRID No. 025575		⁸ Operator Name Yates Petroleum Corporation			⁹ Elevation 3485.5'

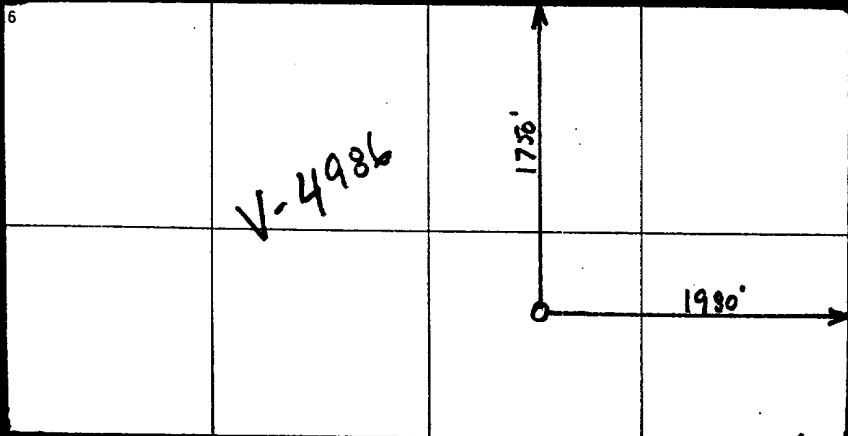
¹⁰ Surface Location

UL or lot no. G	Section 21	Township 23S	Range 34E	Lot Idn	Feet from the 1750'	North/South line North	Feet from the 1980'	East/West line East	County Lea
--------------------	---------------	-----------------	--------------	---------	------------------------	---------------------------	------------------------	------------------------	---------------

¹¹ Bottom Hole Location If Different From Surface

UL or lot no.	Section	Township	Range	Lot Idn	Feet from the	North/South line	Feet from the	East/West line	County
¹² Dedicated Acres 320		¹³ Joint or Infill		¹⁴ Consolidation Code		¹⁵ Order No.			

NO ALLOWABLE WILL BE ASSIGNED TO THIS COMPLETION UNTIL ALL INTERESTS HAVE BEEN CONSOLIDATED OR A
NON-STANDARD UNIT HAS BEEN APPROVED BY THE DIVISION

<div>6</div> 	<div>¹⁷ OPERATOR CERTIFICATION I hereby certify that the information contained herein is true and complete to the best of my knowledge and belief. Signature <i>Ken Beardemphl</i> Printed Name Ken Beardemphl Title Landman Date July 6, 2000</div>
	<div>¹⁸ SURVEYOR CERTIFICATION I hereby certify that the well location shown on this plat was plotted from field notes of actual surveys made by me or under my supervision, and that the same is true and correct to the best of my belief. Date of Survey Signature and Seal of Professional Surveyor: REFER TO ORIGINAL PLAT Certificate Number</div>



NEW MEXICO OIL CONSERVATION COMMISSION
WELL LOCATION AND ACREAGE DEDICATION PLAT

Form C-102
Supersedes C-128
Effective 1-1-65

All distances must be from the outer boundaries of the Section.

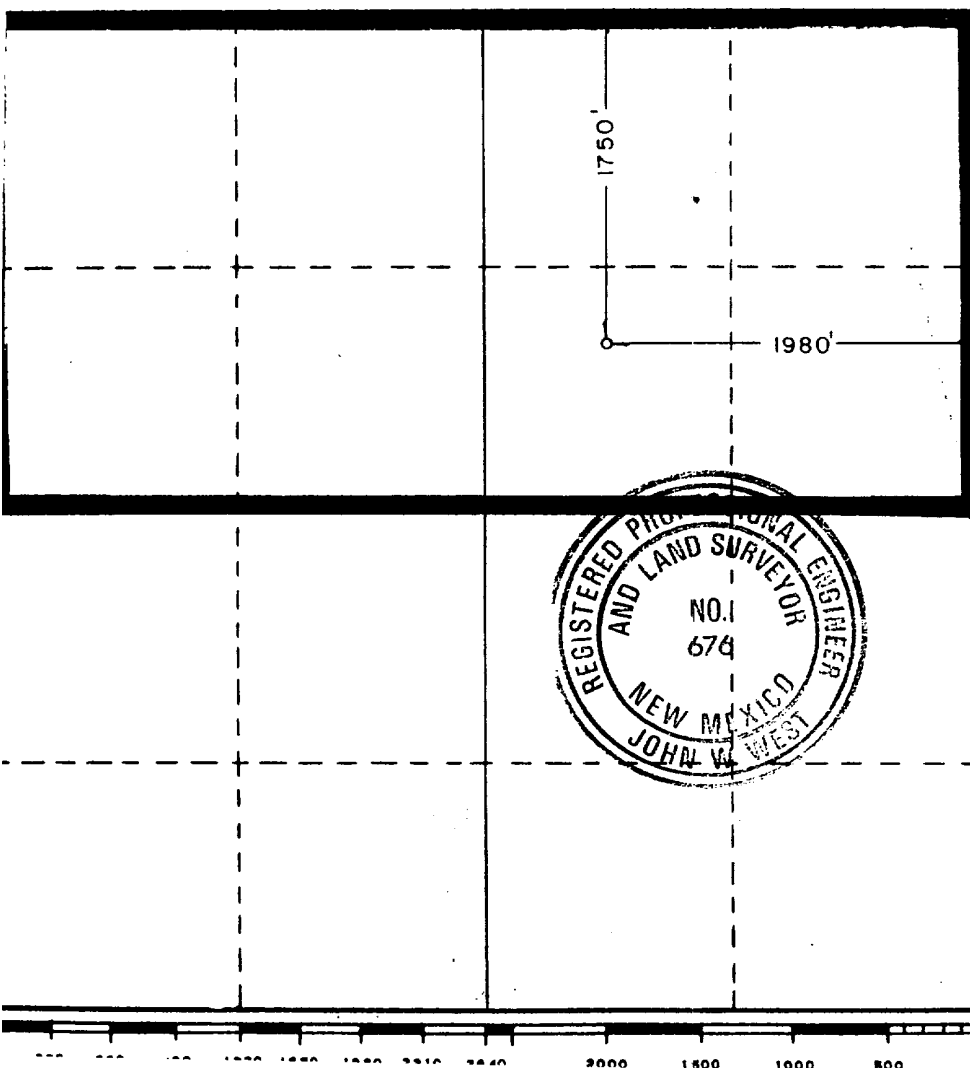
Owner SEDCO ENERGY CORP.		Lease SEDCO STATE 21 <i>State</i>		Well No. 1
Letter G	Section 21	Township 23S	Range 34E	County LEA
Well Location of Well:				
1750 feet from the NORTH line and		1980 feet from the EAST line		
Initial Level Elev. 485.5	Producing Formation Morrow & Atoka	Pool Antelope Ridge (Morrow)	Dedicated Acreage: 320 Acres	

1. Outline the acreage dedicated to the subject well by colored pencil or hatchure marks on the plat below.
2. If more than one lease is dedicated to the well, outline each and identify the ownership thereof (both as to working interest and royalty).
3. If more than one lease of different ownership is dedicated to the well, have the interests of all owners been consolidated by communitization, unitization, force-pooling, etc?

☐ Yes ☐ No If answer is "yes," type of consolidation _____

If answer is "no," list the owners and tract descriptions which have actually been consolidated. (Use reverse side of this form if necessary.) _____

No allowable will be assigned to the well until all interests have been consolidated (by communitization, unitization, forced-pooling, or otherwise) or until a non-standard unit, eliminating such interests, has been approved by the Commission.



CERTIFICATION

I hereby certify that the information contained herein is true and complete to the best of my knowledge and belief.

O. H. Routh

Name
O. H. Routh

Position
Agent

Company
SEDCO ENERGY CORP

Date
8-21-84

I hereby certify that the well location shown on this plat was plotted from field notes of actual surveys made by me or under my supervision, and that the same is true and correct to the best of my knowledge and belief.

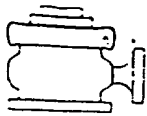
Date Surveyed
7/26/84

Registered Professional Engineer
and/or Land Surveyor

John W. West

Certificate No. JOHN W. WEST, 676
RONALD J. EIDSON, 3239

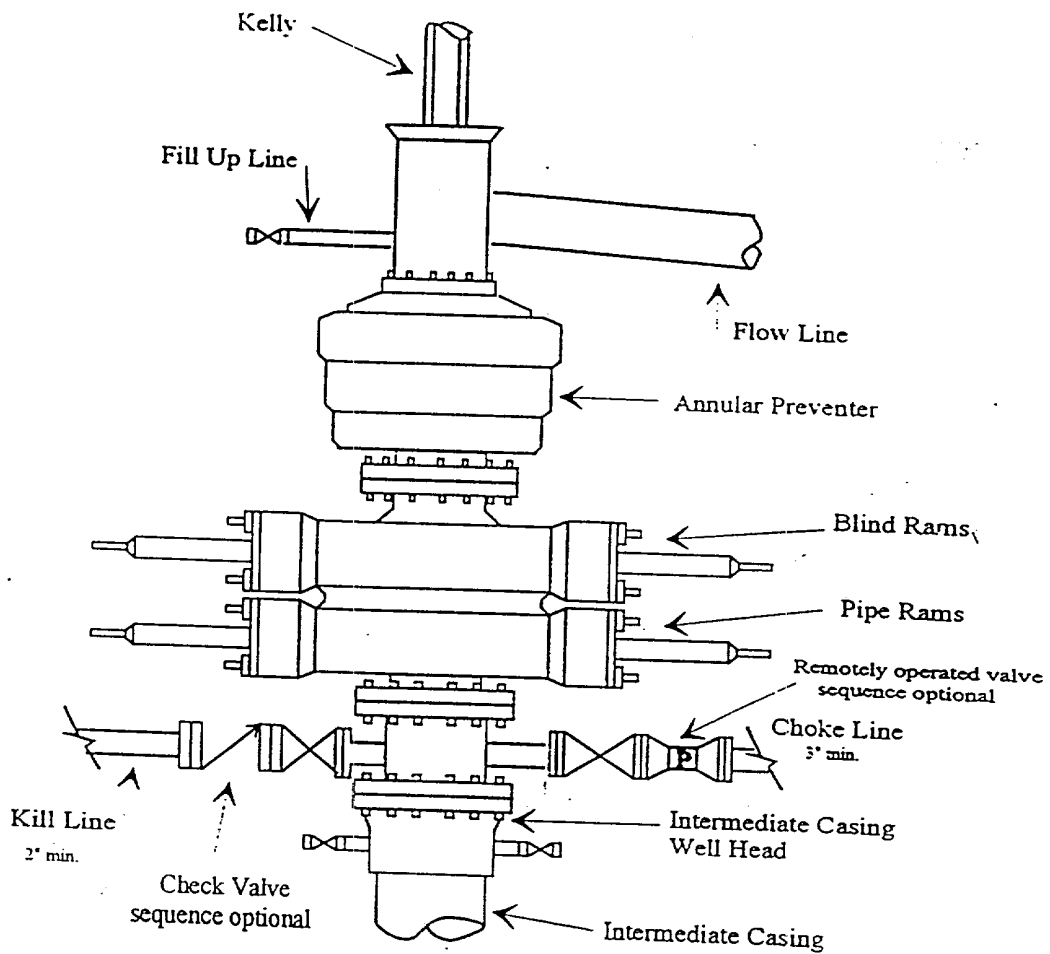




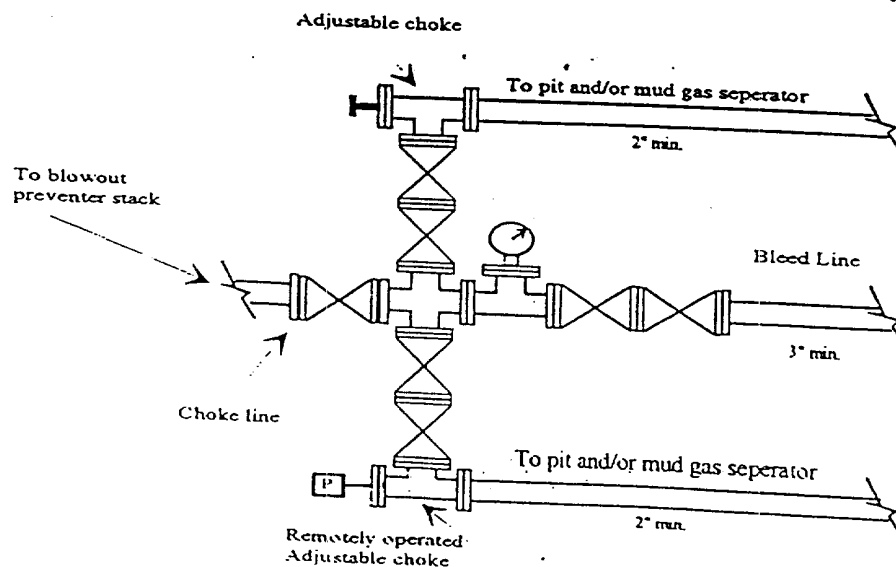
Yates Petroleum Corporation

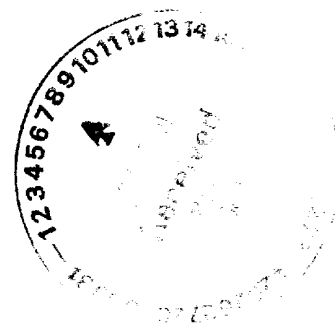
BOP-4

Typical 5,000 psi Pressure System
Schematic
Annular with Double Ram Preventer Stack



Typical 5,000 psi choke manifold assembly with at least these minimum features





District I
PO Box 1980, Hobbs, NM 88241-1980
District II
PO Drawer DD, Artesia, NM 88211-0719
District III
1000 Rio Brazos Rd., Aztec, NM 87410
District IV
PO Box 2088, Santa Fe, NM 87504-2088

State of New Mexico
Energy, Minerals & Natural Resources Department

OIL CONSERVATION DIVISION
PO Box 2088
Santa Fe, NM 87504-2088

Form C-101
Revised February 10, 1994
Instructions on back
Submit to Appropriate District Office
State Lease - 6 Copies
Fee Lease - 5 Copies

☐ AMENDED REPORT

APPLICATION FOR PERMIT TO DRILL, RE-ENTER, DEEPEN, PLUGBACK, OR ADD A ZONE

Operator Name and Address. J. C. WILLIAMSON P. O. Box 16, Midland, Texas 79701		¹ OGRID Number 11158
⁴ Property Code 17406	⁵ Property Name SANTA FE "21" STATE	³ API Number 30-025-28872
		⁶ Well No. 1

UL or lot no.	Section	Township	Range	Lot Idn	Feet from the	North/South line	Feet from the	East/West line	County
G	21	23S	34E		1750	NORTH	1980	EAST	LEA

⁸ Proposed Bottom Hole Location If Different From Surface									
UL or lot no.	Section	Township	Range	Lot Idn	Feet from the	North/South line	Feet from the	East/West line	County
G	21	23S	34E		1750	NORTH	1980	EAST	LEA
⁹ Proposed Pool 1 South ANTELOPE RIDGE (Cherry Canyon)					¹⁰ Proposed Pool 2				

¹¹ Work Type Code P	¹² Well Type Code O	¹³ Cable/Rotary R	¹⁴ Lease Type Code S	¹⁵ Ground Level Elevation 3485.5
¹⁶ Multiple No	¹⁷ Proposed Depth PB 8520	¹⁸ Formation Delaware	¹⁹ Contractor Wellco.	²⁰ Spud Date ASAP

²¹ Proposed Casing and Cement Program

Hole Size	Casing Size	Casing weight/foot	Setting Depth	Sacks of Cement	Estimated TOC

²² Describe the proposed program. If this application is to DEEPEN or PLUG BACK give the data on the present productive zone and proposed new productive zone. Describe the blowout prevention program, if any. Use additional sheets if necessary.

This well has been completed in the Bone Springs, but is very difficult to produce by rod pump method due to it's depth and high gravity oil. The well continually gas locks. It is desired to plug the existing perforations by setting a plug at 8520' and recompleting the well in the Delaware (Brushy Canyon) Formation between the interval 7,250' and 7,300'. The well will be fractured upon completion.

Permit Expires 6 Months From Approval
Date Unless Drilling Underway.

²³ I hereby certify that the information given above is true and complete to the best of my knowledge and belief.

Signature:

Printed name:

Title:

Date:

Mex E. Curry

2-17-96

Phone:

(505) 570-7008

OIL CONSERVATION DIVISION

Approved by:

Orla J. Smith

Title:

Geologist

Approval Date:

FEB 21 1996

Expiration Date:

Conditions of Approval:

Attached ☐

District I
PO Box 1980, Hobbs, NM 88241-1980
District II
PO Drawer DD, Artesia, NM 88211-0719
District III
1000 Rio Brazos Rd., Aztec, NM 87410
District IV
PO Box 2088, Santa Fe, NM 87504-2088

State of New Mexico
Energy, Minerals & Natural Resources Department

OIL CONSERVATION DIVISION
PO Box 2088
Santa Fe, NM 87504-2088

Form C-102
Revised February 10, 1994
Instructions on back
Submit to Appropriate District Office
State Lease - 4 Copies
Fee Lease - 3 Copies

☐ AMENDED REPORT

WELL LOCATION AND ACREAGE DEDICATION PLAT

API Number 30-025-28872		Pool Code 2215		Pool Name South ANTELOPE RIDGE (Del) Field Canyon			
Property Code 17406		Property Name Santa Fe "21" State				Well Number 1	
OGRID No. 11158		Operator Name J.C. Williamson, Box 16, Midland TX 79701				Elevation 3486 GL	

UL or lot no. G	Section 21	Township 23S	Range 34E	Lot Idn	Feet from the 1750	North/South line NORTH	Feet from the 1980	East/West line E	County Lea
--------------------	---------------	-----------------	--------------	---------	-----------------------	---------------------------	-----------------------	---------------------	---------------

Bottom Hole Location If Different From Surface									
UL or lot no. G	Section 21	Township 23S	Range 34E	Lot Idn	Feet from the 1750	North/South line North	Feet from the 1980	East/West line E	County Lea
Dedicated Acres 40		Joint or Infill N		Consolidation Code NA		Order No. NA			

NO ALLOWABLE WILL BE ASSIGNED TO THIS COMPLETION UNTIL ALL INTERESTS HAVE BEEN CONSOLIDATED
OR A NON-STANDARD UNIT HAS BEEN APPROVED BY THE DIVISION

16				17 OPERATOR CERTIFICATION			
				I hereby certify that the information contained herein is true and complete to the best of my knowledge and belief			
				Signature Max E. Curry			
				Printed Name MAX E. CURRY			
				Title Agent			
				Date 2-16-96			
				18 SURVEYOR CERTIFICATION			
				I hereby certify that the well location shown on this plat was plotted from field notes of actual surveys made by me or under my supervision, and that the same is true and correct to the best of my belief.			
				Date of Survey			
				Signature and Seal of Professional Surveyor: John W. West Original			
				Certificate Number			