

30-CR5-28910

NO. OF COPIES RECEIVED	
DISTRIBUTION	
SANTA FE	
FILE	
U.S.G.S.	
LAND OFFICE	
OPERATOR	

NEW MEXICO OIL CONSERVATION COMMISSION

Form C-101
Revised 1-1-65

5A. Indicate Type of Lease
STATE ☒ FEE ☐
5. State Oil & Gas Lease No.

APPLICATION FOR PERMIT TO DRILL, DEEPEN, OR PLUG BACK

1a. Type of Work DRILL <input checked="" type="checkbox"/> DEEPEN <input type="checkbox"/> PLUG BACK <input type="checkbox"/>		7. Unit Agreement Name	
b. Type of Well OIL WELL <input checked="" type="checkbox"/> GAS WELL <input type="checkbox"/> OTHER <input type="checkbox"/> SINGLE ZONE <input type="checkbox"/> MULTIPLE ZONE <input type="checkbox"/>		8. Farm or Lease Name Lea "ACL" State	
2. Name of Operator Gulf Oil Corp.		9. Well No. 1	
3. Address of Operator P. O. Box 670, Hobbs, NM 88240		10. Field and Pool, or Wildcat Blinberry Oil & Gas	
4. Location of Well UNIT LETTER <u>B</u> LOCATED <u>560</u> FEET FROM THE <u>NORTH</u> LINE AND <u>2080</u> FEET FROM THE <u>East</u> LINE OF SEC. <u>36</u> TWP. <u>22S</u> RGE. <u>37E</u> NMPM		12. County Lea	
19. Proposed Depth 7800		19A. Formation Blinberry	20. Rotary or C.T. Rotary
21. Elevations (Show whether DP, RT, etc.) GLE: 3307.4	21A. Kind & Status Plug. Bond Blanket	21B. Drilling Contractor UNKNOWN	22. Approx. Date Work will start ASAP

PROPOSED CASING AND CEMENT PROGRAM

SIZE OF HOLE	SIZE OF CASING	WEIGHT PER FOOT	SETTING DEPTH	SACKS OF CEMENT	EST. TOP
14 3/4"	11 3/4"	42 #	300	Est. 200	Circ
11"	8 5/8"	24 + 32 #	2800 ±	Est. 500	Circ
7 1/8"	5 1/2"	15.5 #	7800	Est. 800	Circ

Mud: 0-300 FW spud 8.6-8.9 34-40 vvi
300-7800 FW spud to 10 ppg brine
7800-711 cut brine w/ starch as needed.

BOP: see attachment 2000 psi test.

APPROVAL VALID FOR 180 DAYS
PERMIT EXPIRES 3/13/85
UNLESS DRILLING UNDERWAY

IN ABOVE SPACE DESCRIBE PROPOSED PROGRAM: IF PROPOSAL IS TO DEEPEN OR PLUG BACK, GIVE DATA ON PRESENT PRODUCTIVE ZONE AND PROPOSED NEW PRODUCTIVE ZONE. GIVE BLOWOUT PREVENTER PROGRAM, IF ANY.

I hereby certify that the information above is true and complete to the best of my knowledge and belief.

Signed R. C. Gaudin Title AREA PROD MGR Date 9-7-84

(This space for State Use)
ORIGINAL SIGNED BY JERRY SEXTON
DISTRICT SUPERVISOR

APPROVED BY _____ TITLE _____ DATE _____

CONDITIONS OF APPROVAL, IF ANY:

SEP 13 1984

RECEIVED

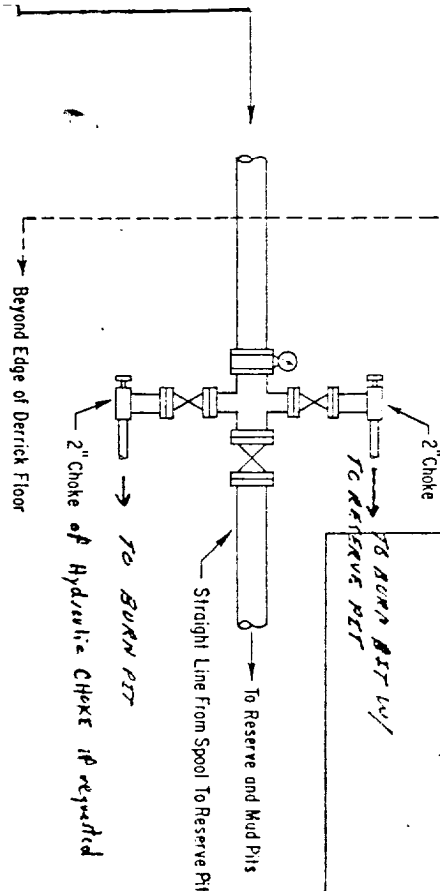
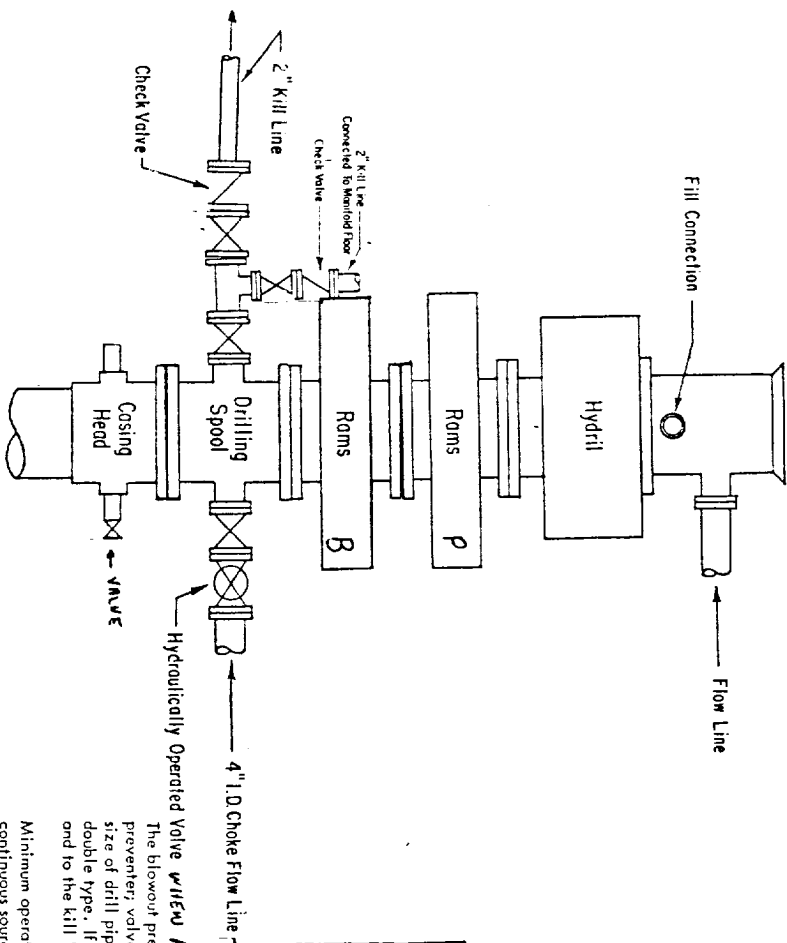
SEP 12 1984

O.C.D.
HOBBS OFFICE

RECEIVED

SEP 10 1984

O.C.D.
HOBBS OFFICE



ADDITIONS - DELETIONS - CHANGES
SPECIFY

NOTE: "When Required" means at any time the Gulf Supervisor can, may, or will require the equipment to be installed during operations.

2000-3000 PSI WORKING PRESSURE
BOP HOOK-UP FOR LARGE CASINGS

SPECIFY WORKING PRESSURE

labeled, with control handles to indicate open and closed positions. A pressure reducer and regulator must be provided for operating the Hydril preventer. When required, a second pressure reducer shall be available to limit operating fluid pressures to ram preventers. Gulf Legion No. 38 hydraulic oil, or equivalent or better, is to be used as the fluid to operate the hydraulic equipment.

The choke manifold, the choke flow line, the choke lines and the relief lines are to be supported by metal stands and adequately anchored. The choke flow line, relief lines and choke lines shall be constructed as straight as possible and without sharp bends. Easy and safe access shall be maintained to the choke manifold. All valves are to be selected for operation in the presence of oil, gas, and drilling fluids. The choke flow line valves and valves of the relief lines connected to the drilling spools and all ram type preventers must be equipped with stem extensions, universal joints if needed, and hand wheels which are to extend beyond the edge of the derrick substructure. All other valves shall be equipped with handles.

Blowout preventer assembly shall consist of one blind ram preventer and one pipe ram preventer, both hydraulically operated, a Hydril preventer, valves, chokes and connections, as illustrated. If a tapered drill string is used, a ram preventer shall be provided for each size of drill pipe. Casing and tubing rams to fit the preventers are to be available as needed. The ram preventers may be two singles or a double type. If correct in size, the flanged outlets of the ram preventer may be used for connecting to the 4-inch 1.0 D. choke flow line and to the kill line. The substructure height shall be sufficient to install a rotating blowout preventer.

Minimum operating equipment for the preventers and hydraulically operated valves shall be as follows: (1) multiple pumps, driven by a continuous source of power, capable of fluid changing the total accumulator volume from the nitrogen precharge pressure to its rated pressure within 2 minutes. Also, the pumps are to be connected to the hydraulic operating system which is to be a closed system. (2) accumulators with a precharge of nitrogen of not less than 750 PSI and connected so as to receive the aforementioned fluid charge. With the charging pumps shut down, the pressurized fluid volume stored in the accumulators shall be sufficient to close all the pressure-operated devices simultaneously within 7 seconds after closure. The remaining accumulator pressure shall be not less than 1000 PSI with the remaining accumulator fluid volume of at least 50 percent of the original. When requested, either an additional source of power, remote and equivalent, is to be available to operate the above pumps, or there shall be additional pumps operated by separate power and equal in performance capabilities.

RECEIVED

SEP 12 1984

O.C.D.
HOBBS OFFICE

RECEIVED

SEP 10 1984

O.C.D.
HOBBS OFFICE

MEXICO OIL CONSERVATION COMMI. 4
WELL LOCATION AND ACREAGE DEDICATION PLAT

Form C-102
Supersedes C-128
Effective 1-1-65

All distances must be from the outer boundaries of the Section.

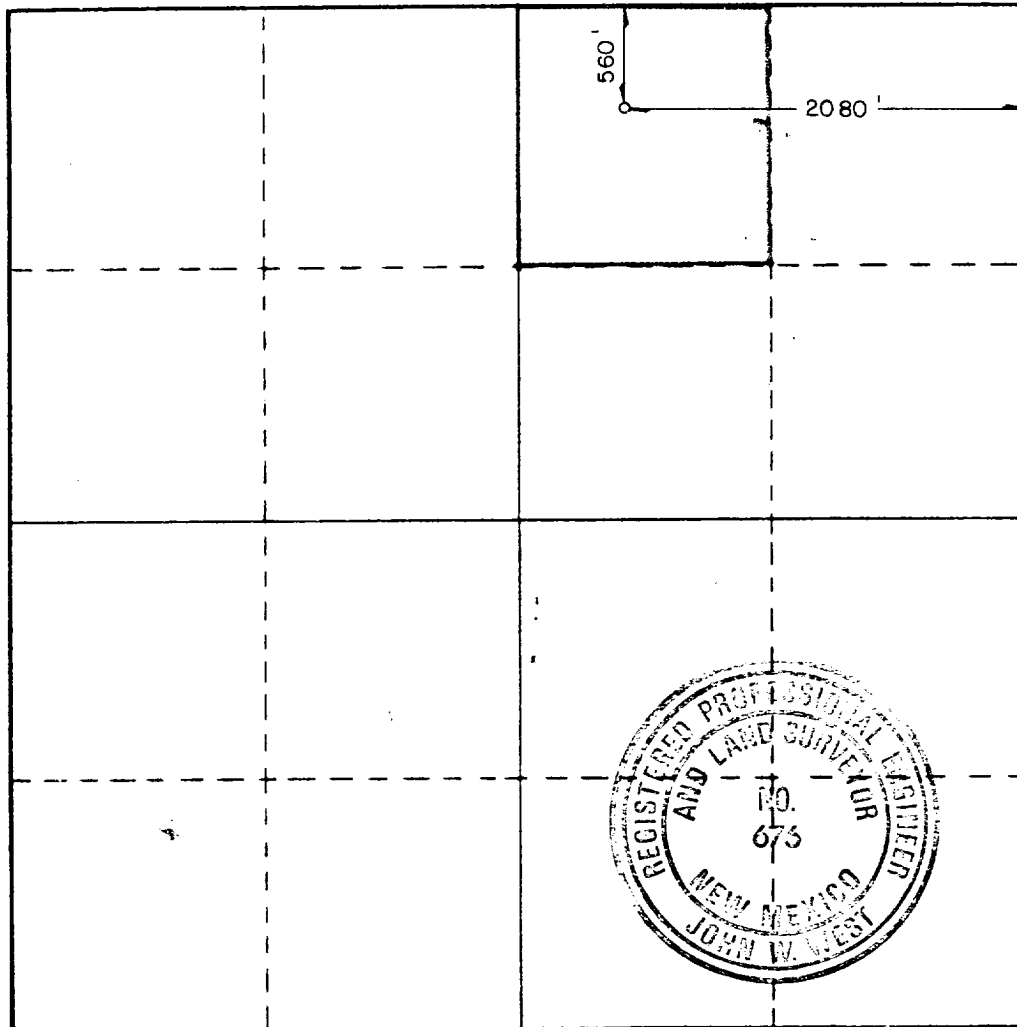
Operator GULF OIL CORPORATION			Lease LEA ACL STATE		Well No. 1
Unit Letter B	Section 36	Township 22 SOUTH	Range 37 EAST	County LEA	
Actual Footage Location of Well: 560 feet from the NORTH line and 2080 feet from the EAST line					
Ground Level Elev. 3307.4	Producing Formation <i>Dlinchery</i>		Pool <i>Blexibery</i>	Dedicated Acreage: 40 Acres	

1. Outline the acreage dedicated to the subject well by colored pencil or hatchure marks on the plat below.
2. If more than one lease is dedicated to the well, outline each and identify the ownership thereof (both as to working interest and royalty).
3. If more than one lease of different ownership is dedicated to the well, have the interests of all owners been consolidated by communitization, unitization, force-pooling, etc?

☐ Yes ☐ No If answer is "yes," type of consolidation _____

If answer is "no," list the owners and tract descriptions which have actually been consolidated. (Use reverse side of this form if necessary.) _____

No allowable will be assigned to the well until all interests have been consolidated (by communitization, unitization, forced-pooling, or otherwise) or until a non-standard unit, eliminating such interests, has been approved by the Commission.



CERTIFICATION

I hereby certify that the information contained herein is true and complete to the best of my knowledge and belief.

R.C. Anderson

Name
R.C. ANDERSON

Position
AREA PROD MGR

Company
GULF OIL CORP

Date
9-7-84

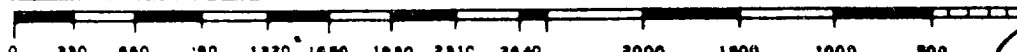
I hereby certify that the well location shown on this plat was plotted from field notes of actual surveys made by me or under my supervision, and that the same is true and correct to the best of my knowledge and belief.

Date Surveyed
AUGUST 30, 1984

Registered Professional Engineer
and/or Land Surveyor

John W. West

Certificate No. JOHN W. WEST, 876
RONALD J. EIDSON, 3239



trans 18-8-6
18-8-7
by memo 18-8-7

113

RECEIVED

SEP 12 1984

O.C.D.
HOBBS OFFICE

RECEIVED

SEP 10 1984

O.C.D.
HOBBS OFFICE