

STATE OF NEW MEXICO  
ENERGY AND MINERALS DEPARTMENT

OIL CONSERVATION DIVISION

P. O. BOX 2008  
SANTA FE, NEW MEXICO 87501

Form C-101  
Revised 10-1-78

|                        |  |
|------------------------|--|
| NO. OF COPIES RECEIVED |  |
| DISTRIBUTION           |  |
| SANTA FE               |  |
| FILE                   |  |
| U.S.G.S.               |  |
| LAND OFFICE            |  |
| OPERATOR               |  |

5A. Indicate Type of Lease  
STATE ☐ FEE ☒

5. State Oil & Gas Lease No.

APPLICATION FOR PERMIT TO DRILL, DEEPEN, OR PLUG BACK

1a. Type of Work

DRILL ☒

DEEPEN ☐

PLUG BACK ☐

7. Unit Agreement Name

8. Farm or Lease Name

Belcher

9. Well No.

2

10. Field and Pool, or Wildcat

Wantz (Granite Wash)

**UNDESIGNATED**

12. County

Lea

b. Type of Well

OIL WELL ☒

GAS WELL ☐

OTHER

SINGLE ZONE ☐

MULTIPLE ZONE ☐

2. Name of Operator

John H. Hendrix Corporation

3. Address of Operator

223 W. Wall, Suite 525, Midland, TX 79701

4. Location of Well

UNIT LETTER K LOCATED 1650 FEET FROM THE South LINE

AND 1650 FEET FROM THE West LINE OF SEC. 7 TWP. 22S RGE. 38E NADPM

19. Proposed Depth

7800'

19A. Formation

Granite Wash

20. Rotary or C.T.

Rotary

21. Elevations (show whether DT, KI, etc.)

3335.7 GL

21A. Kind & Status Plug. Bond

Blanket on File -- N/A

21B. Drilling Contractor

22. Approx. Date Work will start

ASAP

23.

PROPOSED CASING AND CEMENT PROGRAM

| SIZE OF HOLE | SIZE OF CASING | WEIGHT PER FOOT | SETTING DEPTH | SACKS OF CEMENT | EST. TOP |
|--------------|----------------|-----------------|---------------|-----------------|----------|
| 12-1/4"      | 8-5/8"         | 24#             | 1280'+        | 750             | Surface  |
| 7-7/8"       | 5-1/2"         | 14 & 15.5#      | 7800'         | 1300            |          |

Blow-out preventer attached.

IN ABOVE SPACE DESCRIBE PROPOSED PROGRAM; IF PROPOSAL IS TO DEEPEN OR PLUG BACK, GIVE DATA ON PRESENT PRODUCTIVE ZONE AND PROPOSED NEW PRODUCTIVE ZONE. GIVE BLOWOUT PREVENTER PROGRAM, IF ANY.

I hereby certify that the information above is true and complete to the best of my knowledge and belief.

Signed Ramon A. Wathrak Title Vice-President Date 12/8/87

(This space for State Use)

ORIGINAL SIGNED BY JERRY SEXTON

APPROVED BY DISTRICT 1 SUPERVISOR

TITLE

DATE

CONDITIONS OF APPROVAL, IF ANY:

Permit Expires 6 Months From Approval  
Date Unless Drilling Underway.

100-443886-100

RECEIVED  
DEC 10 1987  
OCC  
HOBBS OFFICE

ALL INFORMATION CONTAINED  
HEREIN IS UNCLASSIFIED

**NEW MEXICO OIL CONSERVATION COMMISSION  
WELL LOCATION AND ACREAGE DEDICATION PLAT**

Form C-102  
Supersedes C-128  
Effective 1-1-65

All distances must be from the outer boundaries of the Section.

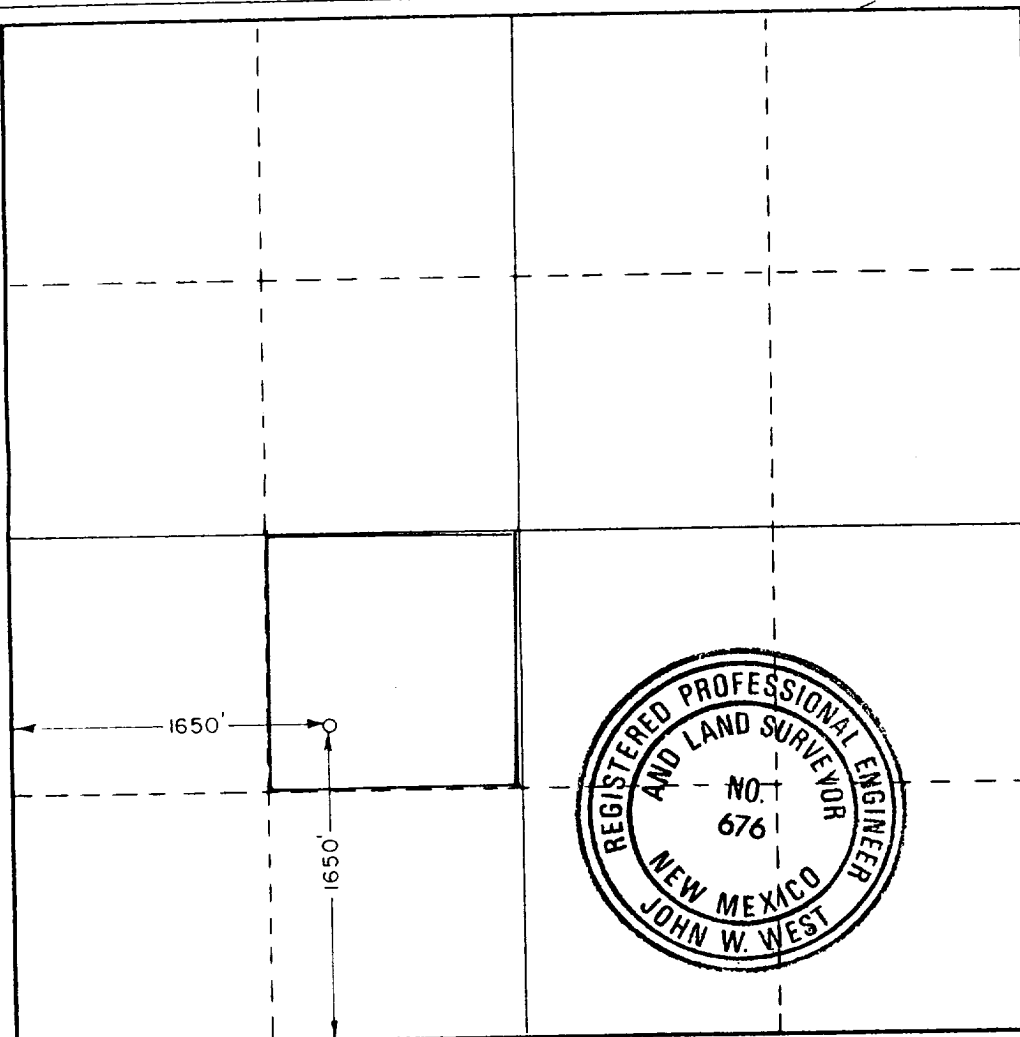
|  |  |                                     |                                       |                      |                      |
|--|--|-------------------------------------|---------------------------------------|----------------------|----------------------|
| Operator<br><b>JOHN H. HENDRIX Corp.</b>   |  |                                     | Lease<br><b>BELCHER</b>               |                      | Well No.<br><b>2</b> |
| Unit Letter<br><b>K</b>  | Section<br><b>7</b>                        | Township<br><b>22 SOUTH</b>         | Range<br><b>38 EAST</b>               | County<br><b>LEA</b> |                      |
| Actual Footage Location of Well:<br><b>1650</b> feet from the <b>SOUTH</b> line and <b>1650</b> feet from the <b>WEST</b> line |  |                                     |                                       |                      |                      |
| Ground Level Elev.<br><b>3335.7</b>  | Producing Formation<br><b>Granite Wash</b> | Pool<br><b>Wantz (Granite Wash)</b> | Dedicated Acreage:<br><b>40</b> Acres |                      |                      |

1. Outline the acreage dedicated to the subject well by colored pencil or hatchure marks on the plat below.
2. If more than one lease is dedicated to the well, outline each and identify the ownership thereof (both as to working interest and royalty).
3. If more than one lease of different ownership is dedicated to the well, have the interests of all owners been consolidated by communitization, unitization, force-pooling, etc?

☐ Yes    ☐ No    If answer is "yes," type of consolidation \_\_\_\_\_

If answer is "no," list the owners and tract descriptions which have actually been consolidated. (Use reverse side of this form if necessary.) \_\_\_\_\_

No allowable will be assigned to the well until all interests have been consolidated (by communitization, unitization, forced-pooling, or otherwise) or until a non-standard unit, eliminating such interests, has been approved by the Commission.



**CERTIFICATION**

I hereby certify that the information contained herein is true and complete to the best of my knowledge and belief.

*Ronnie H. Westbrook*

Name  
**Ronnie H. Westbrook**  
Position  
**Vice-President**  
Company  
**John H. Hendrix Corp.**

Date  
**December 8, 1987**

I hereby certify that the well location shown on this plat was plotted from field notes of actual surveys made by me or under my supervision, and that the same is true and correct to the best of my knowledge and belief.

Date Surveyed  
**December 2, 1987**

Registered Professional Engineer and/or Land Surveyor

*John W. West*

Certificate No. **JOHN W. WEST, 676**  
**RONALD J. EIDSON, 3239**

RECEIVED  
DEC 10 1967  
OCCD  
HOBBS OFFICE