

N MEXICO OIL CONSERVATION COMMISS. J
WELL LOCATION AND ACREAGE DEDICATION PLAT

Form C-102
 Supersedes C-128
 Effective 1-1-65

All distances must be from the outer boundaries of the Section

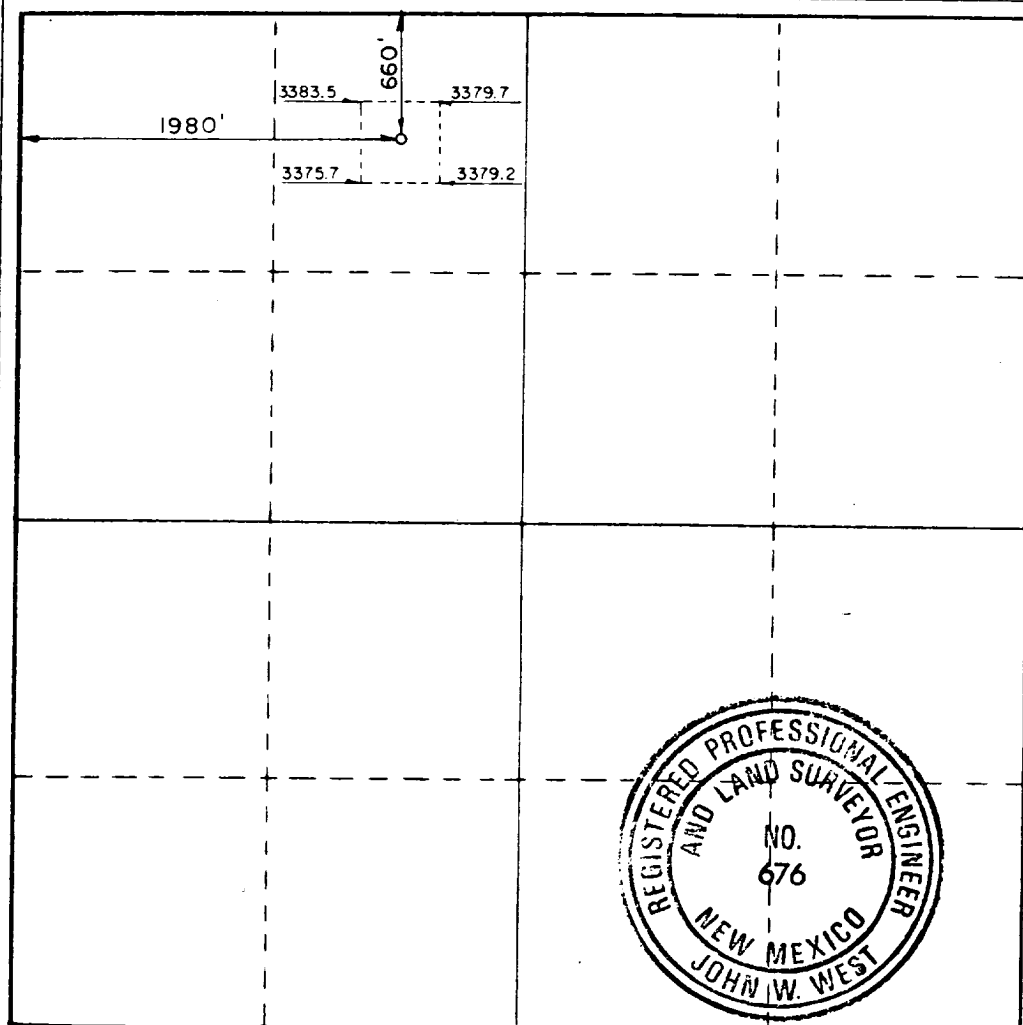
Operator Enron Oil & Gas Co.			Lease Rock Lake 6 Federal		Well No. #1
Unit Letter C	Section 6	Township 23 South	Range 35 East	County Lea	
Actual Footage Location of Well: 660 feet from the North line and 1980 feet from the West line					
Ground Level Elev. 3380.2	Producing Formation Morrow		Pool Wildcat	Dedicated Acreage: 320 N$\frac{1}{2}$ Acres	

1. Outline the acreage dedicated to the subject well by colored pencil or hachure marks on the plat below.
2. If more than one lease is dedicated to the well, outline each and identify the ownership thereof (both as to working interest and royalty).
3. If more than one lease of different ownership is dedicated to the well, have the interests of all owners been consolidated by communitization, unitization, force-pooling, etc?

☐ Yes ☐ No If answer is "yes," type of consolidation _____

If answer is "no," list the owners and tract descriptions which have actually been consolidated. (Use reverse side of this form if necessary.) _____

No allowable will be assigned to the well until all interests have been consolidated (by communitization, unitization, forced-pooling, or otherwise) or until a non-standard unit, eliminating such interests, has been approved by the Commission.



CERTIFICATION

I hereby certify that the information contained herein is true and complete to the best of my knowledge and belief.

Betty Gildon
 Name

Betty Gildon

Position
 Regulatory Analyst

Company
 Enron Oil & Gas Company

Date
 October 28, 1987

I hereby certify that the well location shown on this plat was plotted from field notes of actual surveys made by me or under my supervision, and that the same is true and correct to the best of my knowledge and belief.

Date Surveyed
 August 31, 1987

Registered Professional Engineer and/or Land Surveyor

John W. West
 Certificate No. **JOHN W. WEST, 676**

RONALD J. EIDSON, 3239

RECEIVED
DEC 29 1987
DCD
HOBS OFFICE

APPLICATION FOR PERMIT TO DRILL

Rock Lake 6 Federal, #1

1. The geologic surface formation is Quaternary.

2. The estimated tops of important geologic markers are:

1. <u>Rustler</u>	<u>1800</u>	6. <u>Wolfcamp Lime</u>	<u>10800</u>
2. <u>Delaware Sand</u>	<u>6100</u>	7. <u>Atoka</u>	<u>12100</u>
3. <u>Bone Springs Lime</u>	<u>8600</u>	8. <u>Morrow</u>	<u>13000</u>
4. <u>1st Bone Springs Sd</u>	<u>9500</u>	9. _____	_____
5. <u>3rd Bone Springs Sd</u>	<u>10600</u>	10. _____	_____

3. Depths at which oil, water, or gas bearing formations are expected to be encountered.

Morrow 13,750 - 14,500 feet

4. Brief description of testing, logging, and coring programs.

Drill Stem test as necessary.

Gamma Ray: Surface - TD

Sonic and/or Neutron Density: Top Delaware Sand - TD

Mud Logger: Top Delaware Sand - TD

No coring anticipated.

5. Any anticipated abnormal pressures or temperatures expected? Any potential hazards - H₂S?

Possible abnormal pressures from Wolfcamp through the Atoka

No H₂S zones expected.

1. (A) Pressure control equipment to be used. **
1 - 900 Series rotating blowout preventor & stripper
1 -1500 Series Hydril annular blowout preventor
1-10000# WP Cameron Iron Works double type "U" blowout preventor
with pipe rams and blind rams.
1-10000# WP CIW single type "U" blowout preventor with pipe rams.
(B) Pressure ratings (or API series).

900 series - 3000# WP
1500 series - 5000# WP
10000 series - 10000# WP

- (C) Testing procedures and frequency.

BOPs will be tested at installation point as indicated on application for permit to drill (Form 3160-3).

- (D) Schematic Diagram.

Attached: Exhibit "C"

2. Mud Program

Type and Characteristics

0 - 1100' - Native
1100' - 5500' - 10.0 ppg brinewater
5500' - 11200' - 10.0 ppg brinewater
11200' - 14000' - Drill out with brine and possibly switch to oil base mud, if needed.

Quantities and types of weighting material to be maintained

500 sacks barite on location.

**BOPs can be activated from a remote control closing unit. Drillstring safety valve will be installed at 9-5/8" casing point.