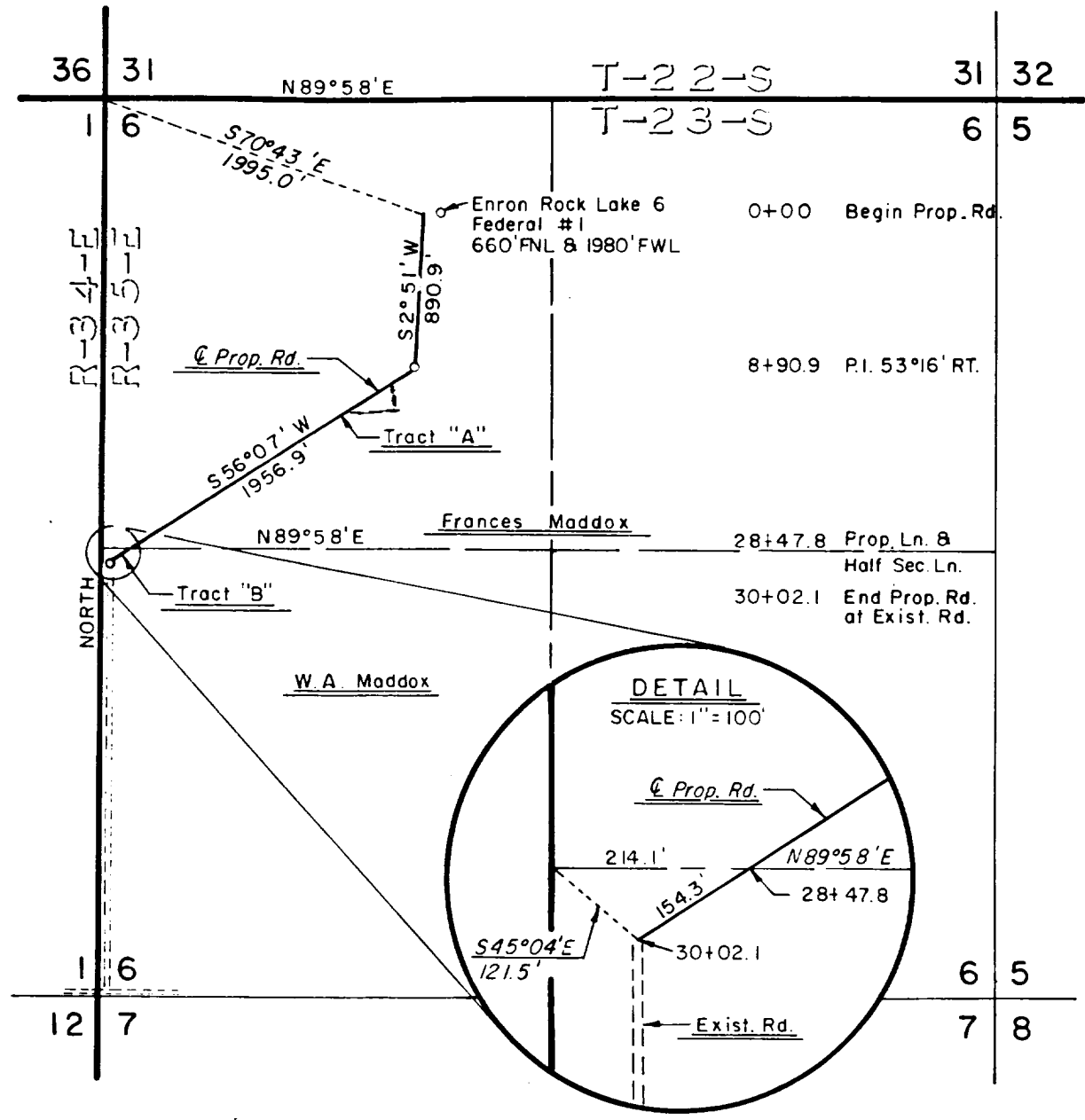


SECTION 6, TOWNSHIP 23 SOUTH, RANGE 35 EAST, N.M.P.M.
LEA COUNTY, NEW MEXICO



For Legal Descriptions, See Sheet 2

Suggested Re-route (-----)



EXHIBIT "A"

I HEREBY CERTIFY THAT THIS PLAT WAS MADE FROM NOTES TAKEN IN THE FIELD IN A BONA FIDE SURVEY MADE UNDER MY SUPERVISION, AND THAT THE SAME IS TRUE AND CORRECT TO THE BEST OF MY KNOWLEDGE AND BELIEF.

John W. West
JOHN W. WEST, N.M. P.E. & L.S. No. 676
TEXAS R.P.S. No. 1138
RONALD J. EIDSON, N.M. L.S. No. 3239
TEXAS R.P.S. No. 1883

ENRON OIL AND GAS	
A road right of way in Section 6, Township 23 South, Range 35 East, N.M.P.M., Lea County, New Mexico.	
JOHN W. WEST ENGINEERING COMPANY CONSULTING ENGINEERS HOBBS, NEW MEXICO	
Scale: 1" = 1000'	Drawn By: S. Stanfield
Date: 10/16/87	Ck. <i>[Signature]</i>
Sheet 1	of 2 Sheets

RECEIVED
DEC 29 1987
OCD
HOBBS OFFICE

LEGAL DESCRIPTION

TRACT "A"

A strip of land 20 feet wide and 2,847.8 feet in length crossing the Northwest quarter of Section 6, Township 23 South, Range 35 East, N.M.P.M., Lea County, New Mexico and being 10 feet left and 10 feet right of the following described centerline:

Beginning at a point which lies S70°43'E a distance of 1995.0 feet from the Northwest corner of said Section 6; thence S02°51'W a distance of 890.9 feet to Sta. 8+90.9; thence S56°07'W a distance of 1956.9 feet to Sta. 28+47.8, a point on the South line of the Northwest quarter of said Section 6, which lies N89°58'E a distance of 214.1 feet from the West quarter corner of said Section 6. Said tract of land contains 1.31 acres, more or less.

2847.8 feet = 172.59 rods

LEGAL DESCRIPTION

TRACT "B"

A strip of land 20.0 feet wide and 154.3 feet in length crossing the Southwest quarter of Section 6, Township 23 South, Range 35 East, N.M.P.M., Lea County, New Mexico and being 10.0 feet left and 10.0 feet right of the following described centerline:

Beginning at Sta. 28+47.8, a point on the North line of the Southwest quarter of said Section 6, which lies N89°58'E a distance of 214.1 feet from the West quarter corner of said Section 6; thence S56°07'W a distance of 154.3 feet to Sta. 30+02.1 a point which lies S45°04'E a distance of 121.5 feet from said quarter corner. Said strip of land contains 0.07 acres, more or less.

154.3 feet = 9.35 rods

ENRON OIL AND GAS

A road right of way in Section 6,
Township 23 South, Range 35 East, N.M.P.M.,
Lea County, New Mexico.

JOHN W. WEST ENGINEERING COMPANY

CONSULTING ENGINEERS

HOBBS, NEW MEXICO

Scale:

Drawn By: S. Stanfield

Date: 10/16/87

Ck. *CS*

Sheet 2 of 2 Sheets