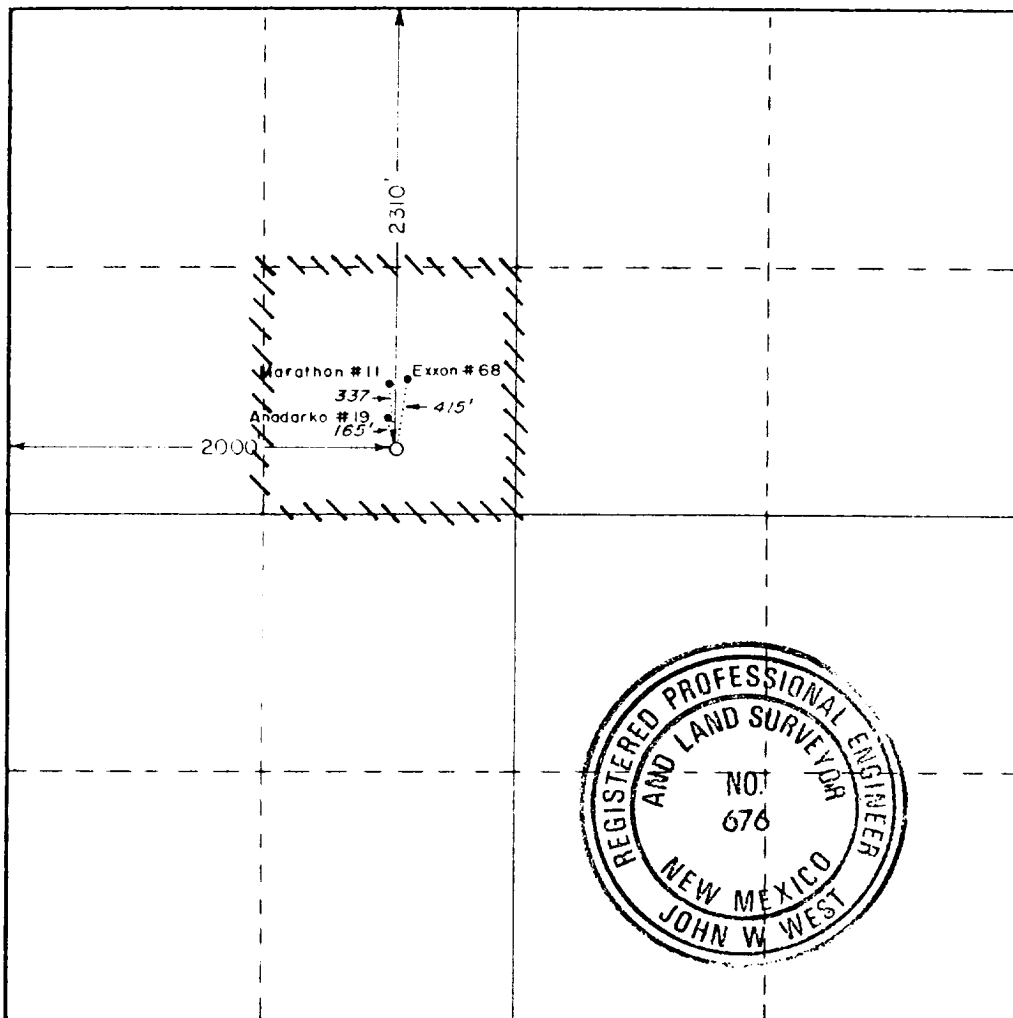


Form C-102
Supersedes C-128
Effective 1-1-65

Operator Marathon Oil Company		Lease Worthan		Well No. 20	
Plot Letter F	Section 11	Township 22 South	Range 37 East	County Lea	
Actual Footage Location of Well: 2310 feet from the north line and 2000 feet from the west line					
Ground Level Elev. 3355.3	Producing Formation Granite Wash/ Ab		Pool Wash Drinkard/Granite Wash	Dedicated Acreage 40 Acres	

- ☐ Yes ☐ No If answer is "yes," type of consolidation _____

No allowable will be assigned to the well until all interests have been consolidated (by communitization, unitization, forced-pooling, or otherwise) or until a non-standard unit, eliminating such interests, has been approved by the Commission.



Jerry L. Lewis

Line

T.L. Rivers

Position

Dist. Drlg Superintendent

Company

Marathon Oil Company

Date _____

3-2-88

I hereby certify that the well location shown on this plat was plotted from field notes of actual surveys made by me or under my supervision, and that the same is true and correct to the best of my knowledge and belief.

Date Surveyed _____

February 25, 1988

Registered Professional Engineer
and/or Land Surveyor

Certificate No	JOHN W. WEST,	676
	RONALD J. EIDSON.	3239

Yonkers Offices
1000
1000
1000

1000
1000
1000