

API ..
**UNITED STATES
DEPARTMENT OF THE INTERIOR
GEOLOGICAL SURVEY**

SUBMIT IN THE ATE*
(Other instructions on reverse side)

30-025-30434
Form approved.
Budget Bureau No. 42-R1425.

APPLICATION FOR PERMIT TO DRILL, DEEPEN, OR PLUG BACK

1a. TYPE OF WORK

DRILL ☒

DEEPEN ☐

PLUG BACK ☐

b. TYPE OF WELL

OIL WELL ☐

GAS WELL ☒

OTHER

SINGLE ZONE ☐

MULTIPLE ZONE ☐

2. NAME OF OPERATOR

Sun Exploration & Production Company

3. ADDRESS OF OPERATOR

P. O. Box 1861, Midland, Texas 79702

4. LOCATION OF WELL (Report location clearly and in accordance with any State requirements.)*

At surface

Unit Letter L, 1980' FSL & 990' FWL

At proposed prod. zone

1830'

14. DISTANCE IN MILES AND DIRECTION FROM NEAREST TOWN OR POST OFFICE*

10 miles west from Eunice, NM

15. DISTANCE FROM PROPOSED*

LOCATION TO NEAREST PROPERTY OR LEASE LINE, FT. (Also to nearest drlg. unit line, if any)

16. NO. OF ACRES IN LEASE

320

17. NO. OF ACRES ASSIGNED TO THIS WELL

320

18. DISTANCE FROM PROPOSED LOCATION* TO NEAREST WELL, DRILLING, COMPLETED, OR APPLIED FOR, ON THIS LEASE, FT.

19. PROPOSED DEPTH

16500

20. ROTARY OR CABLE TOOLS

Rotary

21. ELEVATIONS (Show whether DF, RT, GR, etc.)

3396.2' → (3406.8' GR)

SJS

22. APPROX. DATE WORK WILL START*

ASAP

23.

PROPOSED CASING AND CEMENTING PROGRAM

SIZE OF HOLE	SIZE OF CASING	WEIGHT PER FOOT	SETTING DEPTH	QUANTITY OF CEMENT
17-1/2	13-3/8	54.5	1400	1275 SXSCIRCULATE
12-1/4	9-5/8	40 & 43.5	6300	1950 SXSCIRCULATE
8-1/2	7" n	26 & 29	16500	1075 SX

IN ABOVE SPACE DESCRIBE PROPOSED PROGRAM: If proposal is to deepen or plug back, give data on present productive zone and proposed new productive zone. If proposal is to drill or deepen directionally, give pertinent data on subsurface locations and measured and true vertical depths. Give blowout preventer program, if any.

24.

SIGNED

Alma Inanco

TITLE

Accounting Associate

DATE

7-5-88

(This space for Federal or State office use)

PERMIT NO.

APPROVAL DATE

APPROVED BY

Scott Adams

TITLE

DATE

7-21-88

CONDITIONS OF APPROVAL, IF ANY:

*See Instructions On Reverse Side

RECEIVED
JUL 6 11 42 AM '88
GEOLOGICAL SURVEY
AMERICAN

NEW MEXICO OIL CONSERVATION COMMISSION
WELL LOCATION AND ACREAGE DEDICATION PLAT

Form C-102
Supersedes C-128
Effective 10-65

All distances must be from the outer boundaries of the Section

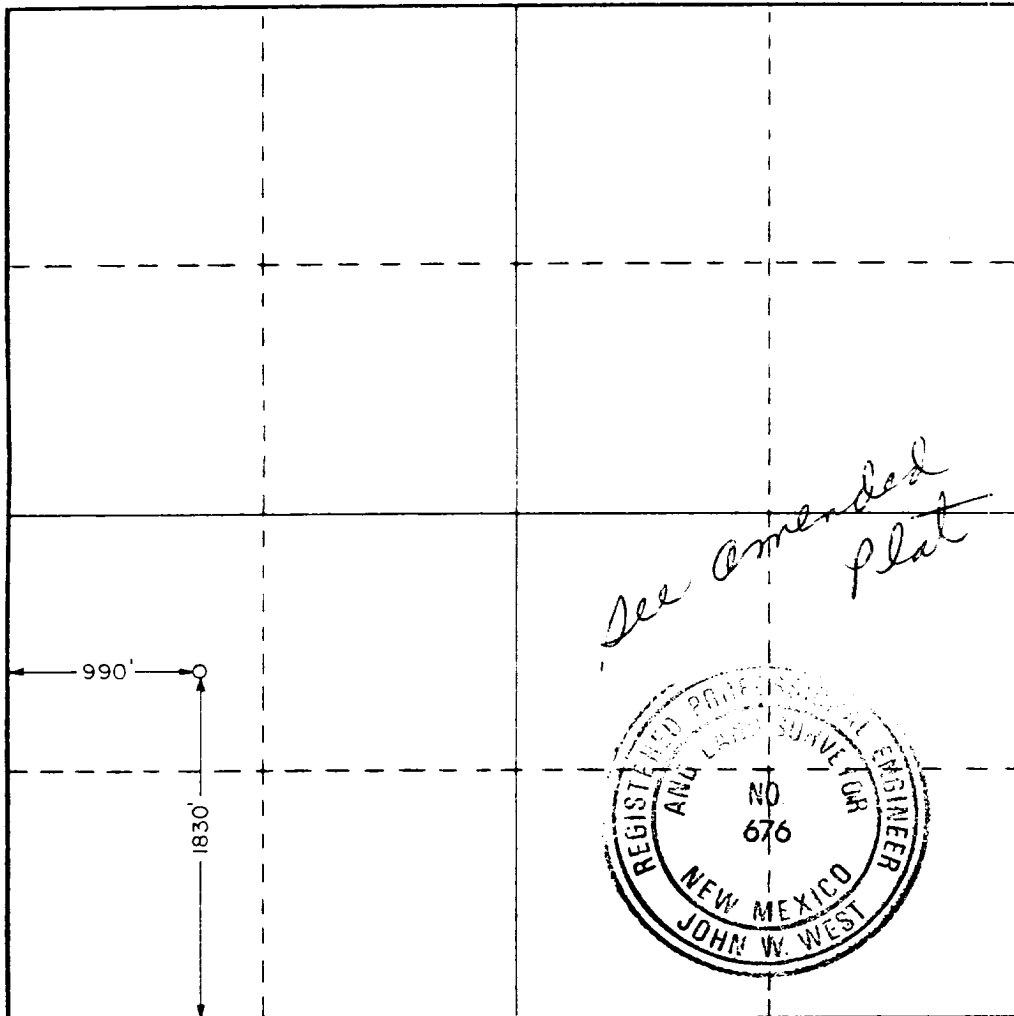
Operator Sun Exploration & Production Co.			Lease New Mexico Federal Unit 15		Well No. 1
Unit Letter L	Section 15	Township 23 South	Range 36 East	County Lea	
Actual Footage Location of Well: 1830 feet from the south line and 990 feet from the west line					
Ground Level Elev. 3396.0	Producing Formation Ellenburger	Pool Wildcat	Dedicated Acreage 320		

1. Outline the acreage dedicated to the subject well by colored pencil or hatchure marks on the plat below.
2. If more than one lease is dedicated to the well, outline each and identify the ownership thereof (both as to working interest and royalty).
3. If more than one lease of different ownership is dedicated to the well, have the interests of all owners been consolidated by communitization, unitization, force-pooling, etc?

☒ Yes ☐ No If answer is "yes," type of consolidation Communitized

If answer is "no," list the owners and tract descriptions which have actually been consolidated. (Use reverse side of this form if necessary.)

No allowable will be assigned to the well until all interests have been consolidated (by communitization, unitization, forced-pooling, or otherwise) or until a non-standard unit, eliminating such interests, has been approved by the Commission.



CERTIFICATION

I hereby certify that the information contained herein is true and complete to the best of my knowledge and belief.

Alva Franco

Name

Alva Franco

Position

Accounting Associate

Company

Sun Expl. & Prod. Co.

Date

7-15-88

I hereby certify that the well location shown on this plat was plotted from field notes of actual surveys made by me or under my supervision, and that the same is true and correct to the best of my knowledge and belief.

Date Surveyed

July 11, 1988

Registered Professional Engineer and/or Land Surveyor

John W. West

Certificate No. JOHN W. WEST,

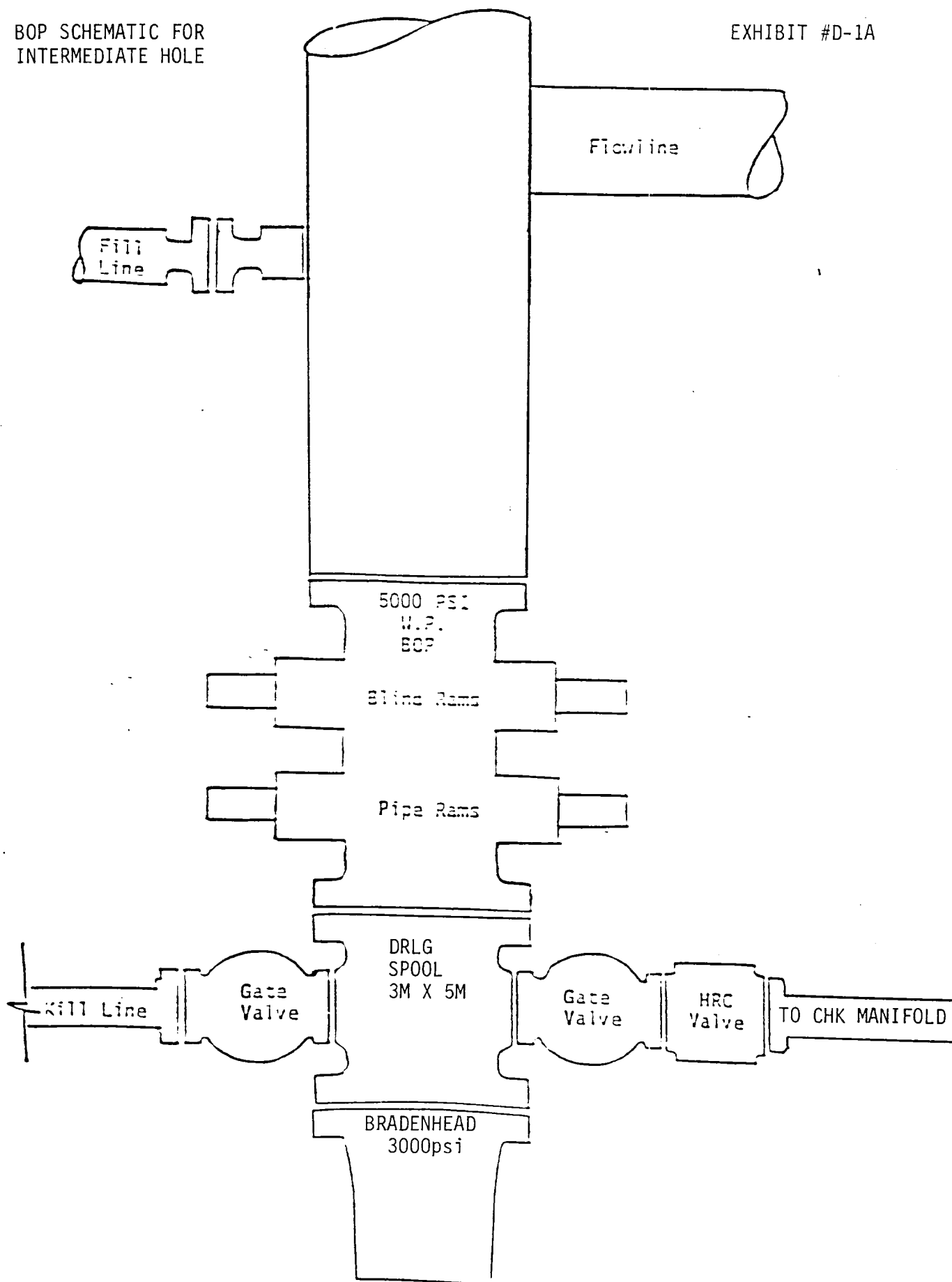
676

RONALD J. EIDSON,

3239

BOP SCHEMATIC FOR
INTERMEDIATE HOLE

EXHIBIT #D-1A



BOP SCHEMATIC FOR
LOWER SECTION

EXHIBIT #D-1

