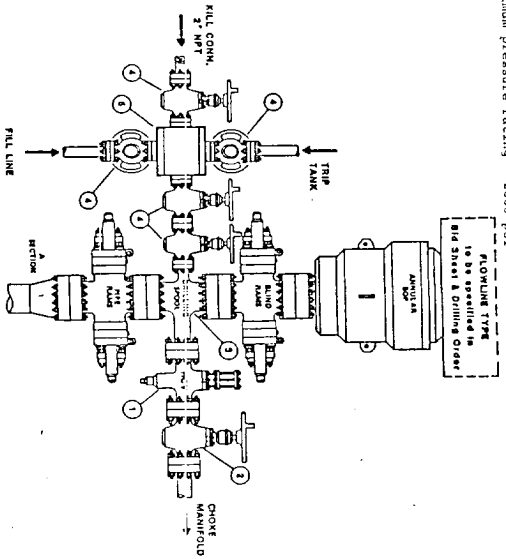


TYPE RSRA BOP STACK THREE PREVENTERS

J. L. Greenwood # 16

Minimum pressure rating - 2000 psi



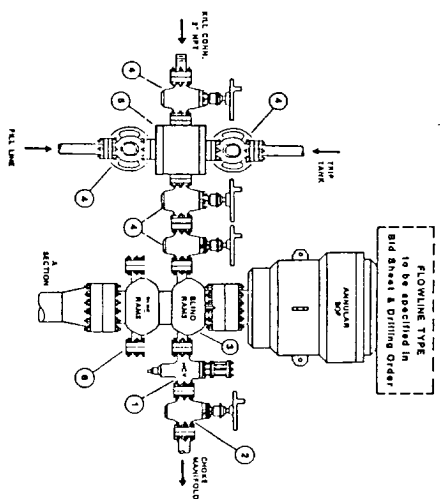
COMPONENT SPECIFICATIONS:

1. Flanged hydraulically controlled gate valve -- 3" minimum nominal diameter -- same working pressure as BOP stack.
2. Flanged plug or gate valve -- 3" minimum nominal diameter -- same working pressure as BOP stack.
3. Drilling spool with flanged side outlets -- minimum 3" choke and minimum 2" kill line.
4. Flanged plug or gate valve -- 2" minimum nominal diameter -- same working pressure as BOP stack.
5. Flanged cross or two (2) flanged tees.

NOTE:

- A. Unless specified otherwise in the Bid Letter and/or Contract, the contractor will furnish and maintain all components shown above Exxon's wellhead.
- B. The choke line between the drilling spool and choke manifold should not contain any bend or turn in the pipe body. Any bend or turn connections should be flanged or welded. All fabrications requiring welding must be done by a certified welder. Welds should be stress relieved when required.
- C. Plug valves should be equivalent to the Hocco Lo-Tec and gate valves equivalent to the Cameron Type 'F'.

TYPE RRA BOP STACK THREE PREVENTERS



COMPONENT SPECIFICATIONS:

1. Flanged hydraulically controlled gate valve -- 3" minimum nominal diameter -- same working pressure as BOP stack.
2. Flanged plug, gate valve -- 3" minimum nominal diameter -- same working pressure as BOP stack.
3. BOP outlets must be 2" minimum nominal diameter for kill line and 3" minimum diameter for choke line.
4. Flanged plug or gate valve -- 2" minimum nominal diameter -- same working pressure as BOP stack.
5. Flanged cross or two (2) flanged tees.
6. Any BOP side outlet flange, located below the bottom ram, must be equipped with a blind flange.

NOTE:

- A. Unless specified otherwise in the Bid Letter and/or Contract, the contractor will furnish and maintain all components shown above Exxon's wellhead.
- B. The choke line between the drilling spool and choke manifold should not contain any bend or turn in the pipe body. Any bend or turn connections should be flanged or welded with a blind flange or welded blind flange. All fabrications requiring welding must be done by a certified welder. Welds should be stress relieved when required.
- C. Plug valves should be equivalent to the Hocco Lo-Tec and gate valves equivalent to the Cameron Type 'F'.