

UNITED STATES
DEPARTMENT OF THE INTERIOR
BUREAU OF LAND MANAGEMENT

30-025-30739
SUBMIT IN TRIPLICATE*
(Other instructions on reverse side)

Form approved.
Budget Bureau No. 1004-0136
Expires August 31, 1985

APPLICATION FOR PERMIT TO DRILL, DEEPEN, OR PLUG BACK

5. LEASE DESIGNATION AND SERIAL NO.

LC-032100

6. IF INDIAN, ALLOTTEE OR TRIBE NAME

7. UNIT AGREEMENT NAME

8. FARM OR LEASE NAME
NCT-1
C. H. Lockhart Federal

9. WELL NO.

11

10. FIELD AND POOL OR WILDCAT
Wantz Granite Wash &
So. Brunson Drinkard Abo

11. SEC., T., R., M., OR BLK.
AND SURVEY OR AREA

Sec. 18, T-22-S, R-38-E

12. COUNTY OR PARISH

Lea

13. STATE
NM

1a. TYPE OF WORK

DRILL ☒

DEEPEN ☐

PLUG BACK ☐

b. TYPE OF WELL

OIL
WELL ☒

GAS
WELL ☐

OTHER

SINGLE
ZONE ☒

MULTIPLE
ZONE ☐

2. NAME OF OPERATOR

Texaco Inc.

3. ADDRESS OF OPERATOR

P. O. Box 3109, Midland, TX 79702

4. LOCATION OF WELL (Report location clearly and in accordance with any State requirements.)*

At surface

380' FNL, 330' FWL, Unit Letter D

At proposed prod. zone

Same

14. DISTANCE IN MILES AND DIRECTION FROM NEAREST TOWN OR POST OFFICE*

4 Miles Southeast of Eunice, New Mexico

15. DISTANCE FROM PROPOSED*

LOCATION TO NEAREST
PROPERTY OR LEASE LINE, FT.
(Also to nearest drlg. unit line, if any)

330'

16. NO. OF ACRES IN LEASE

400

17. NO. OF ACRES ASSIGNED
TO THIS WELL

40

18. DISTANCE FROM PROPOSED LOCATION*
TO NEAREST WELL, DRILLING, COMPLETED,
OR APPLIED FOR, ON THIS LEASE, FT.

426'

19. PROPOSED DEPTH

7600'

20. ROTARY OR CABLE TOOLS

Rotary

21. ELEVATIONS (Show whether DF, RT, GR, etc.)

GR 3341'

22. APPROX. DATE WORK WILL START*

Nov. 27, 1989

PROPOSED CASING AND CEMENTING PROGRAM

SIZE OF HOLE	SIZE OF CASING	WEIGHT PER FOOT	SETTING DEPTH	QUANTITY OF CEMENT
20"	16"	94#	40'	Readi-Mix
14 3/4"	11 3/4"	47#	1350'	1500 sx
11"	8 5/8"	24#	3000'	1000 sx
7 7/8"	5 1/2"	15.5 & 17#	7600'	1850 sx

CEMENTING PROGRAM

Conductor - Read-Mix.

Surface - 1500 sx Class "H" with 2% CaCl₂ (15.6 ppg, 1.19 cu ft/sx, 5.2 gals wtr/sx).

Intermediate - 400 sx 50/50 Poz Class "H" with 2% Gel, 5% Salt (14.25 ppg, 1.28 cu ft/sx, 5.75 gals wtr/sx), followed by 250 sx Class "H" with 2% CaCl₂ (15.6 ppg, 1.19 cu ft/sx, 5.2 gals wtr/sx).

ECP & DV Tool @ 1400' - 350 sx Class "H" with 2% CaCl₂ (15.6 ppg, 1.19 cu ft/sx, 5.2 gals wtr/sx).

Production - 450 sx 50/50 Poz Class "H" with 2% Gel, 5% Salt, 1/4# Flocele (14.25 ppg, 1.28 cu ft/sx, 5.75 gals wtr/sx).

DV Tool @ 5200' - 1300 sx 35/65 Poz Class "H" with 6% Gel, 5% Salt, 1.4# Flocele (12.8 ppg, 1.87 cu ft/sx, 9.9 gals wtr/sx), followed by 100 sx Class "H" (15.6 ppg, 1.18 cu ft/sx, 5.2 gals wtr/sx).

No other operator in this 1/4 Section.

IN ABOVE SPACE DESCRIBE PROPOSED PROGRAM: If proposal is to deepen or plug back, give data on present productive zone and proposed new productive zone. If proposal is to drill or deepen directionally, give pertinent data on subsurface locations and measured and true vertical depths. Give blowout preventer program, if any.

SIGNED

C. Wade Howard

TITLE Engineer's Assistant

DATE Nov. 01, 1989

(This space for Federal or State office use)

PERMIT NO.

APPROVAL DATE

AREA MANAGER

APPROVED BY

Shirley French

TITLE

BAR STATE RESOURCE AG.

DATE

11.27.89

*See Instructions On Reverse Side

Title 18 U.S.C. Section 1001, makes it a crime for any person knowingly and willfully to make to any department or agency of the United States any false, fictitious or fraudulent statements or representations as to any matter within its jurisdiction.

INSTRUCTIONS

NOV 28 1989

RECEIVED

GENERAL: This form is designed for submitting proposals to perform certain well operations, as indicated, on all types of lands and leases for appropriate action by either a Federal or a State agency, or both, pursuant to applicable Federal and/or State laws and regulations. Any necessary special instructions concerning the use of this form and the number of copies to be submitted, particularly with regard to local, area, or regional procedures and practices, either are shown below or will be issued by, or may be obtained from, the local Federal and/or State office.

ITEM 1: If the proposal is to redrill to the same reservoir at a different subsurface location or to a new reservoir, use this form with appropriate notations. Consult applicable State or Federal regulations concerning subsequent work proposals or reports on the well.

ITEM 4: If there are no applicable State requirements, locations on Federal or Indian land should be described in accordance with Federal requirements. Consult local State or Federal office for specific instructions.

ITEM 14: Needed only when location of well cannot readily be found by road from the land or lease description. A plat, or plats, separate or on this reverse side, showing the roads to, and the surveyed location of, the well, and any other required information, should be furnished when required by Federal or State agency offices.

ITEMS 15 AND 18: If well is to be, or has been directionally drilled, give distances for subsurface location of hole in any present or objective production zone.

ITEM 22: Consult applicable Federal or State regulations, or appropriate officials, concerning approval of the proposal before operations are started.

NOTICE

The Privacy Act of 1974 and the regulation in 43 CFR 2.48(d) provide that you be furnished the following information in connection with information required by this application.

AUTHORITY: 30 U.S.C. 181 et seq., 25 U.S.C. 396; 43 CFR Part 3160.

PRINCIPAL PURPOSE: The information is to be used to process and evaluate your application for permit to drill, deepen, or plug back an oil or gas well.

ROUTINE USES: (1) The analysis of the applicant's proposal to discover and extract the Federal or Indian resources encountered. (2) The review of procedures and equipment and the projected impact on the land involved. (3) The evaluation of the effects of proposed operation on surface and subsurface water and other environmental impacts. (4)(5) Information from the record and or the record will be transferred to appropriate Federal, State, local or foreign agencies, when relevant to civil, criminal or regulatory investigations or prosecutions, as well as routine regulatory responsibility.

EFFECT OF NOT PROVIDING INFORMATION: Filing of this application and disclosure of the information is mandatory only if the lessee elects to initiate drilling operation on an oil and gas lease.

The Paperwork Reduction Act of 1980 (44 U.S.C. 3501 et seq) requires us to inform you that:

This information is being collected to allow evaluation of the technical, safety, and environmental factors involved with drilling for oil and/or gas on Federal and Indian oil and gas leases.

This information will be used to analyze and approve applications.

Response to this request is mandatory only if the lessee elects to initiate drilling operations on an oil and gas lease.

OIL CONSERVATION DIVISION

P.O. Box 2088

Santa Fe, New Mexico 87504-2088

DISTRICT I

P.O. Box 1980, Hobbs, NM 88240

DISTRICT II

P.O. Drawer DD, Artesia, NM 88210

DISTRICT III

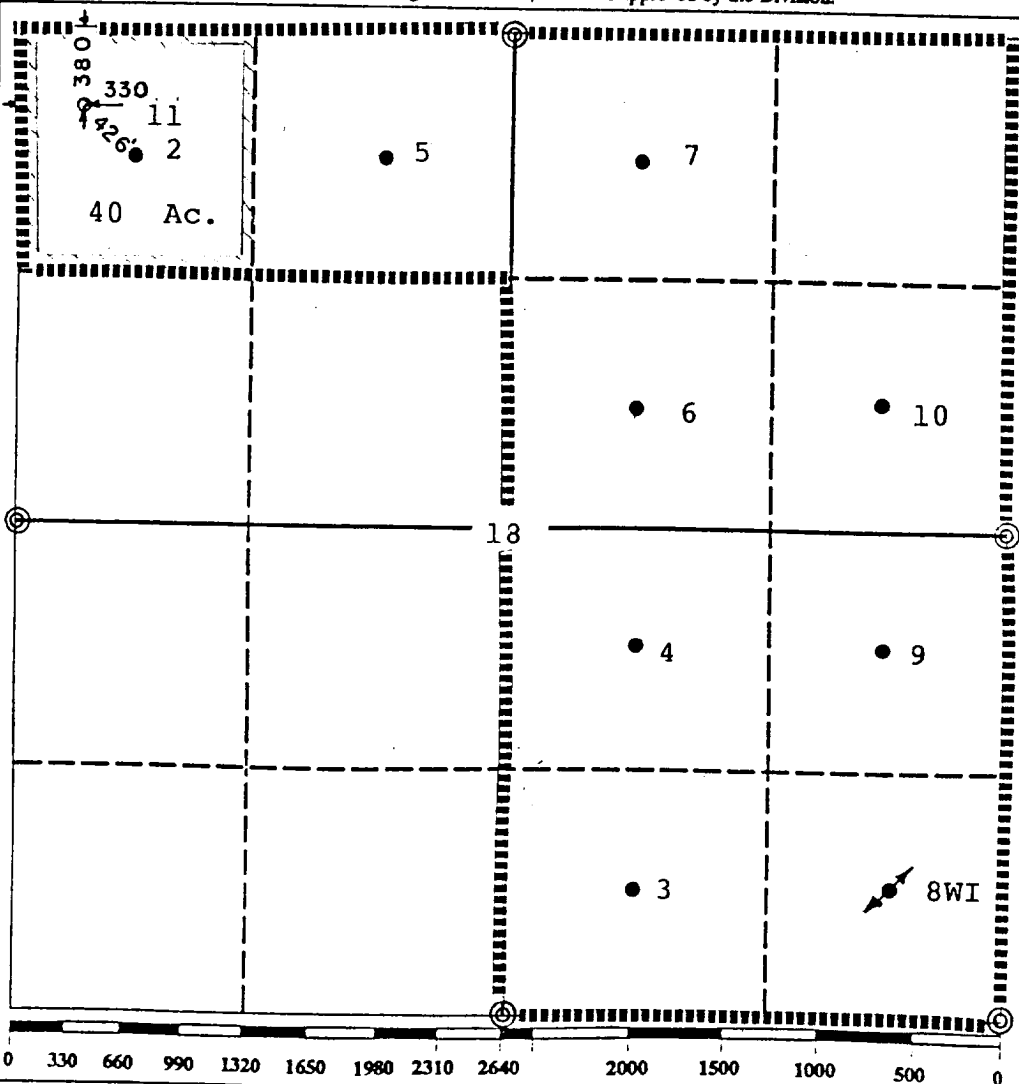
1000 Rio Brazos Rd., Aztec, NM 87410

WELL LOCATION AND ACREAGE DEDICATION PLAT

All Distances must be from the outer boundaries of the section

Operator TEXACO INC.			Lease C. H. Lockhart NCT-1		Well No. 11
Unit Letter D	Section 18	Township 22 South	Range 38 East	County Lea	
Actual Footage Location of Well: 380 feet from the North line and 330 feet from the West line					
Ground level Elev. 3341	Producing Formation Wantz Granite Wash So. Brunson Drinkard ABO		Pool Wantz Granite Wash So. Brunson Drinkard ABO		Dedicated Acreage: 40 Acres

- Outline the acreage dedicated to the subject well by colored pencil or hatchure marks on the plat below.
- If more than one lease is dedicated to the well, outline each and identify the ownership thereof (both as to working interest and royalty).
- If more than one lease of different ownership is dedicated to the well, have the interest of all owners been consolidated by communitization, unitization, force-pooling, etc.?
☐ Yes ☐ No If answer is "yes" type of consolidation _____
If answer is "no" list the owners and tract descriptions which have actually been consolidated. (Use reverse side of this form if necessary). _____
No allowable will be assigned to the well until all interests have been consolidated (by communitization, unitization, forced-pooling, or otherwise) or until a non-standard unit, eliminating such interest, has been approved by the Division.



OPERATOR CERTIFICATION

I hereby certify that the information contained herein in true and complete to the best of my knowledge and belief.

Signature

Royce Mariott

Printed Name

Royce Mariott

Position

Division Surveyor

Company

TEXACO Inc.

Date

Sept. 18, 1989

SURVEYOR CERTIFICATION

I hereby certify that the well location shown on this plat was plotted from field notes of actual surveys made by me or under my supervision, and that the same is true and correct to the best of my knowledge and belief.

Date Surveyed

Sept. 5, 1989

Signature & Seal of Professional Surveyor

[Signature]
NEW MEXICO
7254
Certificate No. 7254

OIL CONSERVATION DIVISION

DISTRICT I
P.O. Box 1980, Hobbs, NM 88240

P.O. Box 2088

Santa Fe, New Mexico 87504-2088

DISTRICT II
P.O. Drawer DD, Artesia, NM 88210

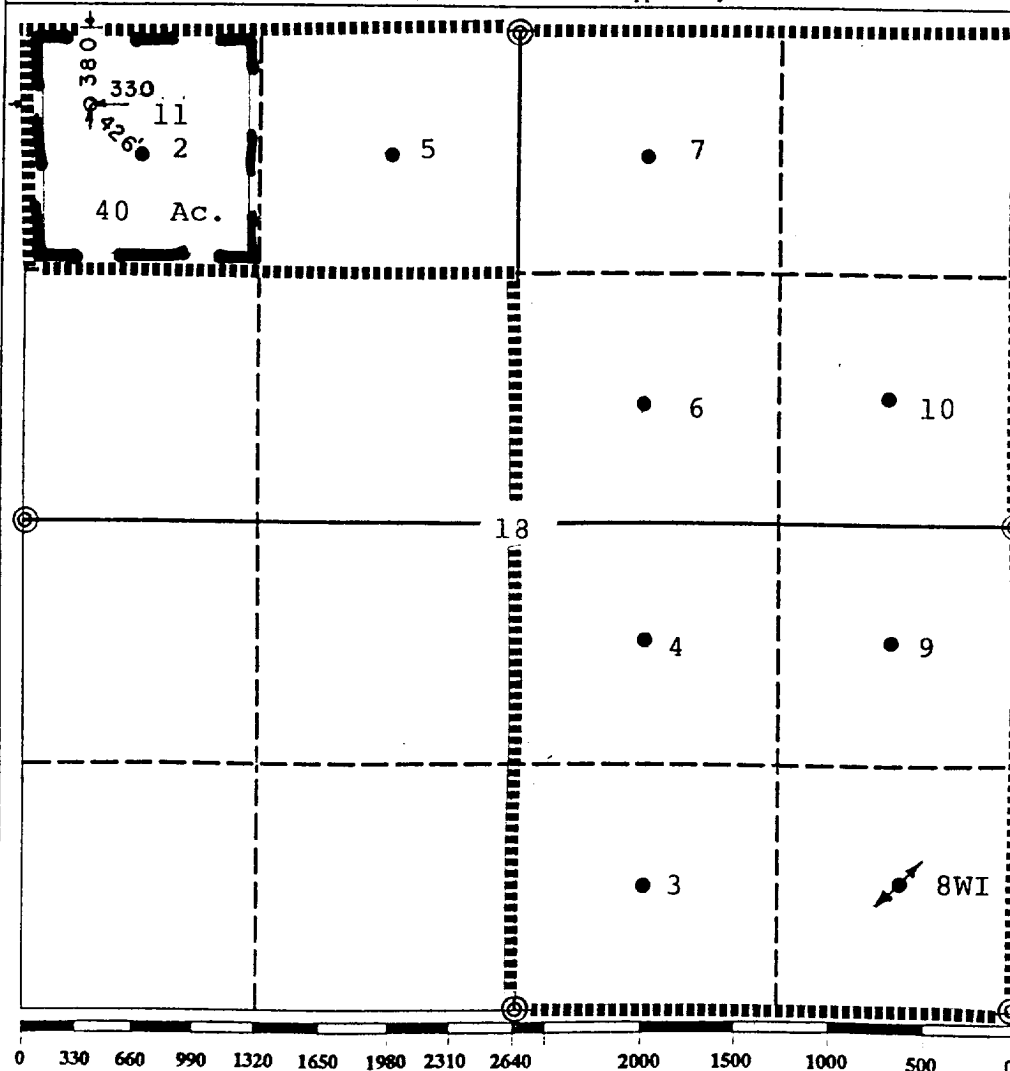
DISTRICT III
1000 Rio Brazos Rd., Aztec, NM 87410

WELL LOCATION AND ACREAGE DEDICATION PLAT

All Distances must be from the outer boundaries of the section

Operator TEXACO INC.			Lease C. H. Lockhart NCT-1		Well No. 11
Unit Letter D	Section 18	Township 22 South	Range 38 East	County Lea	
Actual Footage Location of Well: 380 feet from the North line and 330 feet from the West line					
Ground level Elev. 3341	Producing Formation Wantz Granite Wash So. Brunson Drinkard ABO		Pool Wantz Granite Wash So. Brunson Drinkard ABO		Dedicated Acreage: 40 Acres

- Outline the acreage dedicated to the subject well by colored pencil or hatchure marks on the plat below.
- If more than one lease is dedicated to the well, outline each and identify the ownership thereof (both as to working interest and royalty).
- If more than one lease of different ownership is dedicated to the well, have the interest of all owners been consolidated by communitization, unitization, force-pooling, etc.?
☐ Yes ☐ No If answer is "yes" type of consolidation _____
If answer is "no" list the owners and tract descriptions which have actually been consolidated. (Use reverse side of this form if necessary). _____
No allowable will be assigned to the well until all interests have been consolidated (by communitization, unitization, forced-pooling, or otherwise) or until a non-standard unit, eliminating such interest, has been approved by the Division.



OPERATOR CERTIFICATION

I hereby certify that the information contained herein is true and complete to the best of my knowledge and belief.

Signature

Printed Name

Royce Mariott

Position

Division Surveyor

Company

TEXACO Inc.

Date

Sept. 18, 1989

SURVEYOR CERTIFICATION

I hereby certify that the well location shown on this plat was plotted from field notes of actual surveys made by me or under my supervision, and that the same is true and correct to the best of my knowledge and belief.

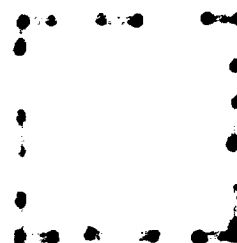
Date Surveyed

Sept. 18, 1989

Signature & Seal of
Professional Surveyor

Certificate No. **7254**

Sheet 8 of 8



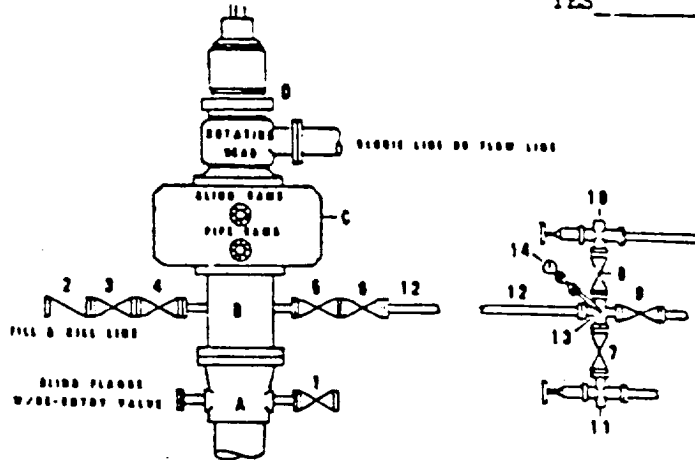
RECEIVED

NOV 28 1989

NOV 28 1989

DRILLING CONTROL
CONDITION II-B 3000 WP
FOR AIR DRILLING OR
WHERE YATES AIR BLOWS ARE EXPECTED

H₂S TRIM REQUIRED
 YES _____ NO _____



DRILLING CONTROL

MATERIAL LIST - CONDITION II - B
FOR AIR DRILLING

- A Texaco Wellhead
- B 3000# W.P. drilling spool with a 2" minimum flanged outlet for kill-line and 3" minimum flanged outlet for choke line
- C 3000# W.P. Dual ram type preventer, hydraulic operated with 1" steel, 3000# W.P. control lines (where sub-structure height is adequate, 2-3000# W.P. single ram type preventers may be utilized.)
- D Rotating Head and extended Baffle Line.
- 1,3,4, 7,8 2" minimum 3000# W.P. flanged full opening steel gate valve, or Halliburton Lo Torc Plug valve.
- 2 2" minimum 3000# W.P. back pressure valve
- 5,6,9 3" minimum 3000# W.P. flanged full opening steel gate valve, or Halliburton Lo Torc Plug valve.
- 12 3" minimum schedule 80, Grade "B", seamless line pipe
- 13 2" minimum x 3" minimum 3000# W.P. flanged cross
- 10, 11 2" minimum 3000# W.P. adjustable choke bodies
- 14 Cameron Mud Gauge or equivalent (location optional in choke line.)

SCALE	DATE	EST. NO.	DRG. NO.
DRAWN BY			
CHECKED BY			
APPROVED BY			



TEXACO, INC.
 MIDLAND DIVISION
 MIDLAND, TEXAS



EXHIBIT C

Hand 2/7/90

ELT

RECEIVED

NOV 28 1989

OCD
MOBBS OFFICE